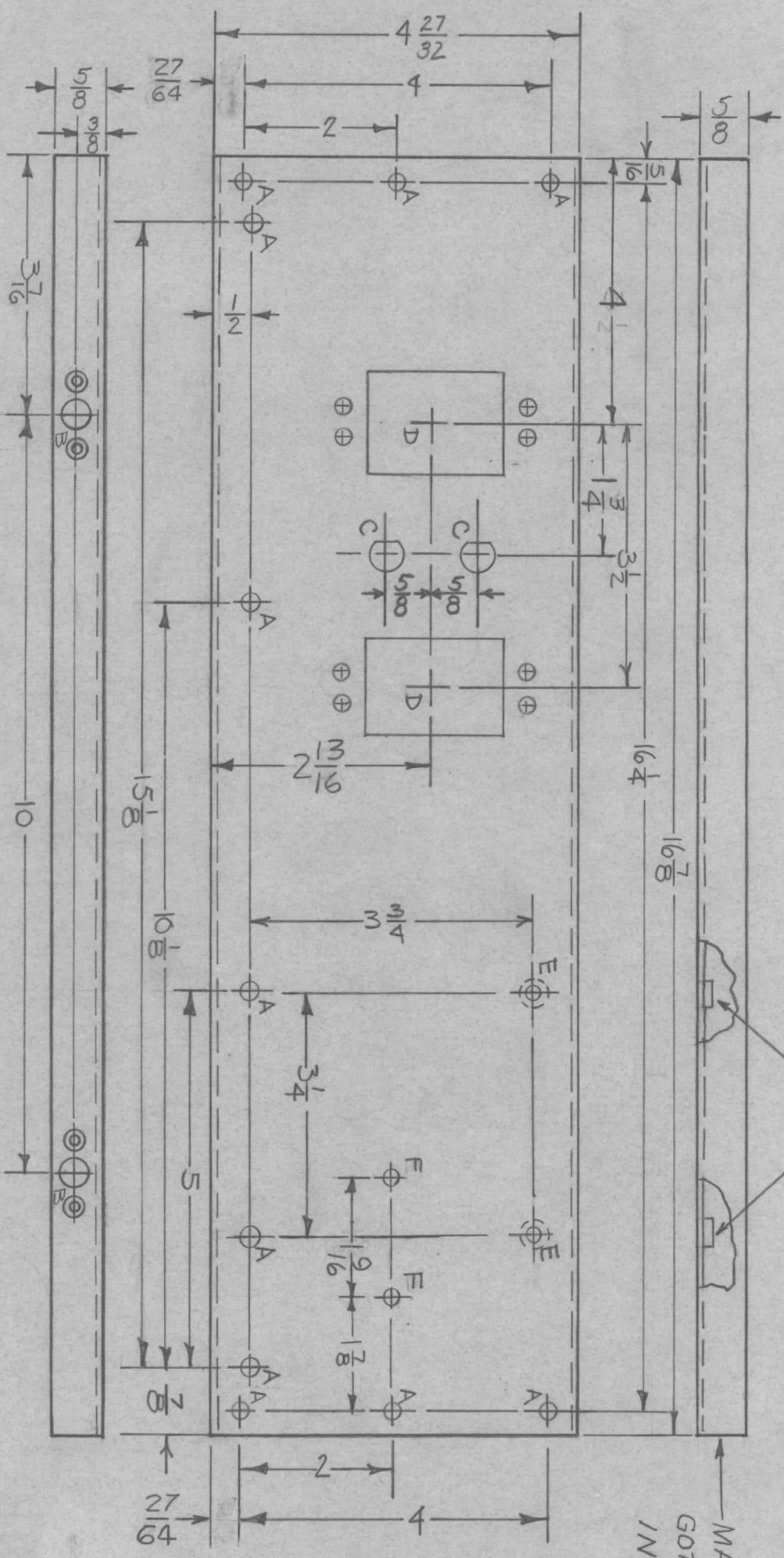


ZONE	LTR	DESCRIPTION	DATE	E.M.N. NO	DRAFT	CHKD	APPD
X	X	EXP. RELEASE	12/19/67		A.P.		
X1	X1	ADDED ITEM 2 & 3	5.6.68	X1	W.B.		
Ø	Ø	ORIGINAL RELEASE FOR PRODUCTION	5.1.68	Ø	W.B.		

REVISIONS

MOUNT ITEM 1 IN "E" HOLES AS SHOWN

MARK TMC P/M (MSS311) 1/8" HIGH  
GOTHIC W/LATEST REV. LETTER  
INSIDE



HOLE	DESCRIPTION	REQ
A	13/64 D.I.A.	11
B	SEE DETAIL	2
C	SEE DETAIL	2
D	SEE DETAIL	2
E	.221-.224 D.I.A.	2
F	1/8 D.I.A.	2

REQ'D ITEM	PART NUMBER	DESCRIPTION	SYM.
4	R1100-094-32	RIVET, BLIND	B
2	FS102-2	LOCKSPRING	B
2	NT129-832-4	NUT, PLAIN, SPLINE TYPE	E

THE TECHNICAL MATERIEL CORP.  
MAMARONECK, NEW YORK

PLATE, REAR

SIZE	CODE IDENT. NO.	DWG. NO.	ISSUE
B	82679	MSS5311	Ø
SCALE	DO NOT SCALE	SHEET	OF

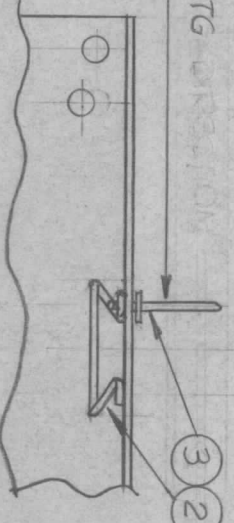
REF: LD2287

UNLESS OTHERWISE SPECIFIED DIMENSIONS ARE IN INCHES AND INCLUDE CHEMICALLY APPLIED OR PLATED FINISHES

DECIMALS	FRACTIONS
.X ± .05	1/64
.XX ± .01	ANGLES 90° .30'
.XXX ± .005	

MATERIAL: .063 ALUMINUM 5052-H32  
FINISH: S404-YEL. IRIDITE

QTY / UNIT	MODEL USED ON	ASSY. NO.
1	SWCD-3K	
APPLICATION		
CODE	S401-451	



STUD SHOWN FOR MFG DIRECTION ONLY

UNLESS OTHERWISE SPECIFIED:

1. USE MATERIAL THICKNESS FOR MAXIMUM RADIUS ON ALL BENDS.
2. ALL ANGULAR BENDS 90 DEGREES.
3. REMOVE ALL BURRS & SHARP EDGES.
4. MOUNT INSERTS AFTER FINISHING.

