

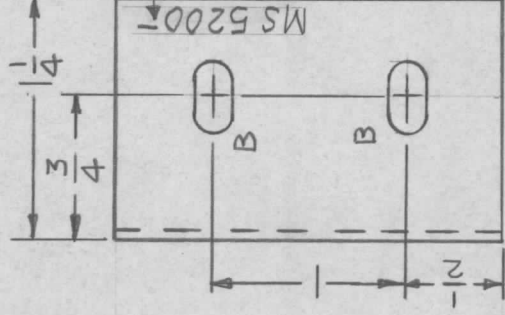
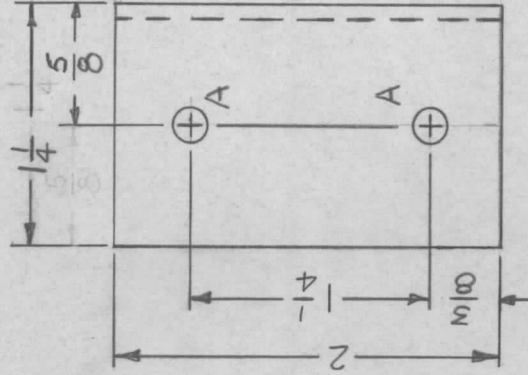
APPLICATION

QTY MODEL USED ON ASS'Y NO.

1 GPT-40KEL

REVISIONS

LTR	DESCRIPTION	DATE	E.M.N.NO	DRAFT	CHKD	APPD
X	EXP. RELEASE	10-20-67		H.R.		
Ø	ORIG. RELEASE FOR PROD	1-7-69		R.G.		



MARK TMC P/N  $\frac{1}{8}$  HIGH  
GOTHIC W/LATEST REV.  
LETTER.

HOLE	DESCRIPTION	REQ
A	11/64 DIA.	2
B	3/16 X 3/8 SLOT	2

UNLESS OTHERWISE SPECIFIED:

1. USE MATERIAL THICKNESS FOR MAXIMUM RADIUS ON ALL BENDS
2. ALL ANGULAR BENDS 90 DEGREES
3. REMOVE ALL BURRS AND SHARP EDGES

UNLESS OTHERWISE SPECIFIED DIMENSIONS ARE IN INCHES AND INCLUDE CHEMICALLY APPLIED OR PLATED FINISHES

DECIMALS FRACTIONS  
X ± .05 TOLS. 1/64  
.XX ± .01 ANGLES  
.XXX ± .005 0°-30°

MATERIAL .064 THK. ALUM  
5052-H32

FINISH S404 YEL  
IRIDITE

S401-451

REQ'D	ITEM	PART NUMBER	DESCRIPTION	SYM.
F. BUDEITI			LIST OF MATERIAL	
			THE TECHNICAL MATERIEL CORP. MAMARONECK, NEW YORK	
			BRACKET MTG SWITCH	

FINAL APPROVAL	DATE	MECH. DES.	DATE	ELECT. DES.	DATE	CHECKED	DATE	DRAWN	DATE
<i>[Signature]</i>	1-7-69	<i>[Signature]</i>	1-7-69	<i>[Signature]</i>	1-7-69	<i>[Signature]</i>	1-7-69	<i>[Signature]</i>	10, 20, 67

NOTICE TO PERSONS RECEIVING THIS DRAWING

THE TECHNICAL MATERIEL CORPORATION claims proprietary right in the material disclosed hereon. This drawing is issued in confidence for engineering information only and may not be reproduced or used to manufacture anything shown hereon without permission from THE TECHNICAL MATERIEL CORPORATION to the user. This drawing is loaned for mutual assistance and is subject to recall at any time.

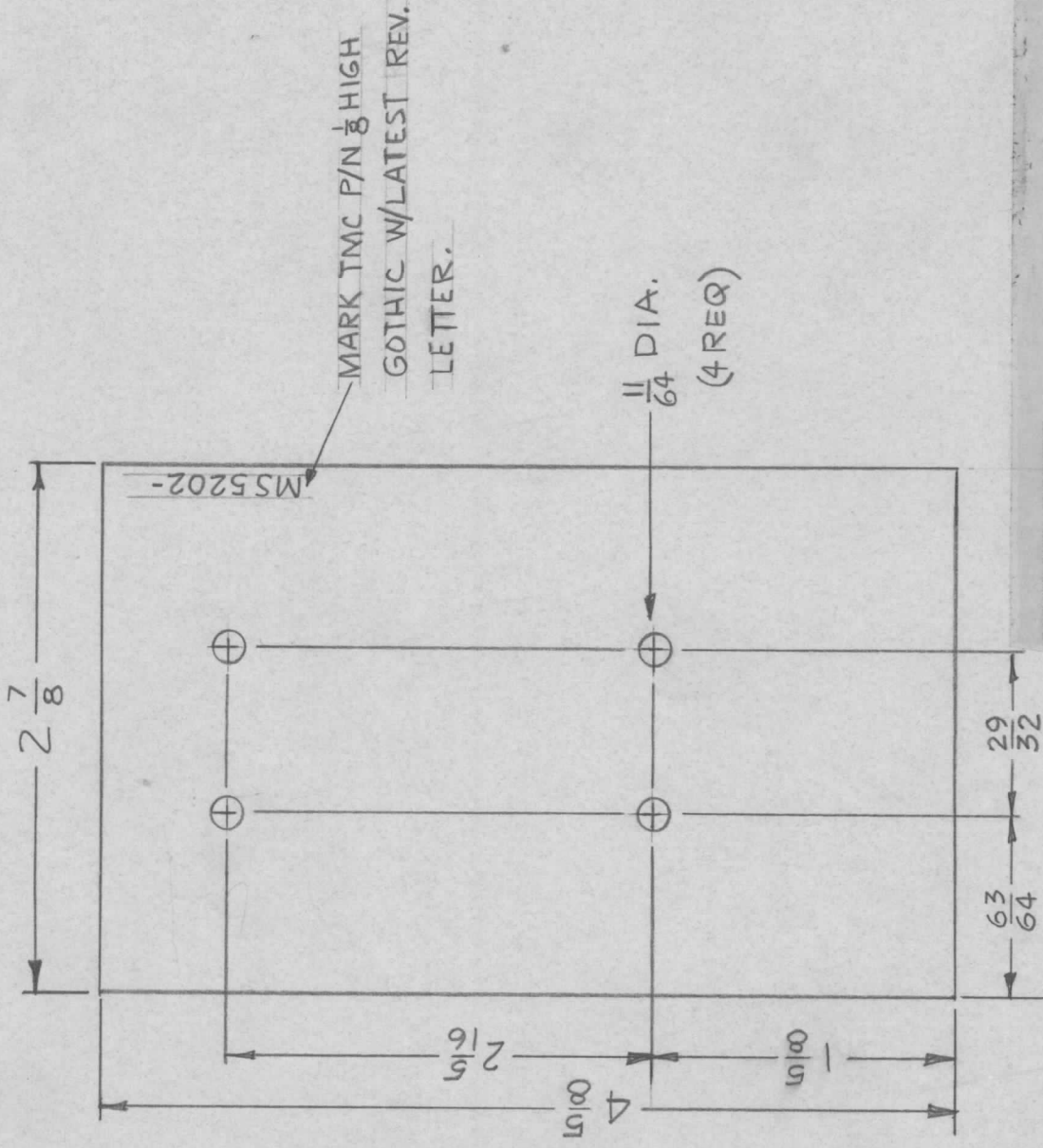
SIZE	CODE IDENT. NO.	DWG NO.	ISSUE
A	82679	MS 5200	Ø
SCALE 1:1		SHEET	OF

## APPLICATION

QTY	MODEL USED ON	ASS'Y NO.	LTR
1	GPT-40KEL		X
2	GPT-10KRL		Ø

## REVISIONS

DESCRIPTION	DATE	E.M.N.NO	DRAFT	CHKD	APPD
EXP. RELEASE	11-14-67		HG		
ORIGINAL RELEASE	7/15/69		CU		



## FINISH NOTES:

1. S404 - IRIDITE 14-2 AL-COAT.
  2. S114 - ZINC CHROMATE PRIMER
  3. S115 - SMOOTH GRAY ENAMEL
- } BOTH SIDES

UNLESS OTHERWISE SPECIFIED DIMENSIONS ARE IN INCHES AND INCLUDE CHEMICALLY APPLIED OR PLATED FINISHES	REQ'D	ITEM	PART NUMBER	DESCRIPTION	SYM.
DECIMALS ± .05 .XX ± .01 .XXX ± .005	F. BUDETTI			LIST OF MATERIAL	J20645-000
FRACTIONS 1/64	FINAL APPROVAL			THE TECHNICAL MATERIEL CORP.	
ANGLES 0° .30'	DATE	7/15/69		MAMARONECK, NEW YORK	
MATERIAL: 040 ALUMINUM 5052-H32	MECH. DES	BN		PLATE, COVER, COUNTER	
FINISH SEE NOTES	ELECT. DES.				
S401-451	CHECKED				
	DRAWN	NY.			
	DATE	11-14-67			

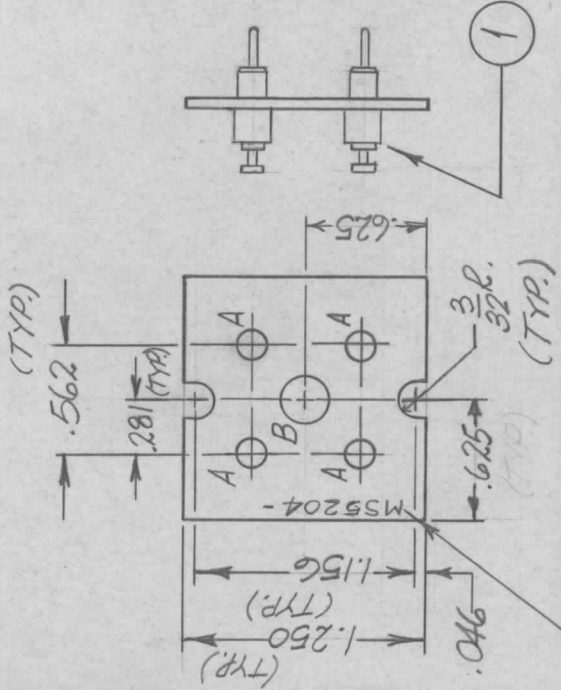
## NOTICE TO PERSONS RECEIVING THIS DRAWING

THE TECHNICAL MATERIEL CORPORATION claims proprietary right in the material disclosed herein. This drawing is issued in confidence for engineering information only and may not be reproduced or used to manufacture anything shown hereon without permission from THE TECHNICAL MATERIEL CORPORATION to the user. This drawing is loaned for mutual assistance and is subject to recall at any time.

SIZE	CODE IDENT. NO.	DWG NO.	ISSUE
A	82679	MS 5202	Ø
SCALE	1:1	SHEET	OF

REVISIONS

QTY	MODEL USED ON	ASS'Y NO.	LTR	DESCRIPTION	DATE	E.M.N.NO	DRAFT	CHKD	APPD
12	VLRC - 1	A4644	X	EXP. RELEASE	10.3.67		ADD. APT		
			Ø	ORIG. RELEASE FOR PROD.	10-12-67	Ø	R.G.		



MARK TMC PT. NO. 1/8 HIGH  
GOTHIC W/LATEST REV. LETTER.

NOTE:

- 1- DEBURR ONE EDGE OF HOLE BEFORE INSERTING ITEM 1.
- 2- MOUNT ITEM 1 AFTER PLATING.

REF: LD2255  
BX221

REQ'D	ITEM	PART NUMBER	DESCRIPTION	SYMBOL
4	1	TE169-1	TERM., FDTHRU, INSULATED	A
LIST OF MATERIAL SK3292-001-17				
THE TECHNICAL MATERIEL CORP. MAMARONECK, NEW YORK				
PLATE, COVER				

SIZE	CODE IDENT. NO.	DWG NO.	ISSUE
A	82679	MS5204	Ø
SCALE	1:1	SHEET	OF

UNLESS OTHERWISE SPECIFIED DIMENSIONS ARE IN INCHES AND INCLUDE CHEMICALLY APPLIED OR PLATED FINISHES

DECIMALS FRACTIONS  
 .X ± .05 TOLS. 1/64  
 .XX ± .01 ANGLES 0°-30'  
 .XXX ± .005

MATERIAL .050 THK.  
HALF HARD BRASS

FINISH BRASS PLATE

S401-451

NOTICE TO PERSONS RECEIVING THIS DRAWING: THE TECHNICAL MATERIEL CORPORATION claims proprietary right in the material disclosed hereon. This drawing is issued in confidence for engineering information only and may not be reproduced or used to manufacture anything shown hereon without permission from THE TECHNICAL MATERIEL CORPORATION to the user. This drawing is loaned for mutual assistance and is subject to recall at any time.

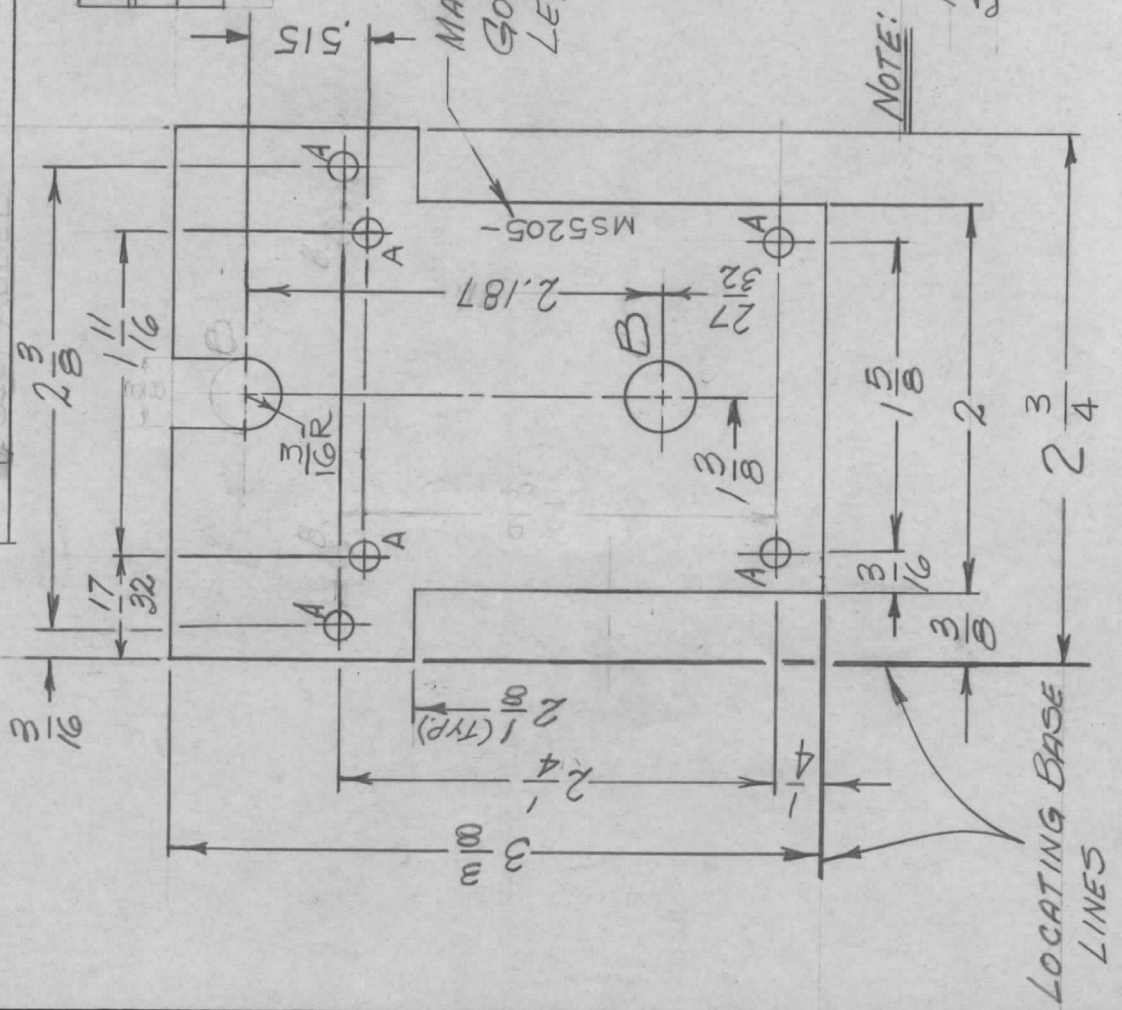


APPLICATION

QTY	MODEL USED ON	ASS'Y NO.	LTR
1	LPA-2		X

REVISIONS

DESCRIPTION	DATE	E.M.N.NO	DRAFT	CHKD	APPD
EXP. RELEASE	10-4-67	-	HA	HA	DB
X1 2.171 WAS 2.156, 2A WERE B	10-16-67	-	HY	HY	HY
X2 2-9/64 ADD. & 2.187 WAS 2.156	11-13-67	-	HY	HY	HY
Ø ORIGINAL REL. FOR PROD.	11-15-67	-	RG	RG	RG
A 2.2 <sup>2</sup> / <sub>64</sub> DEL. .5/5 & SLOT ADDED.	1-15-68	18710	HA	HA	FB



HOLE	DESCRIPTION	REQ.
A	5/32 DIA.	6
B	3/8 DIA	1

REQ'D ITEM	PART NUMBER	DESCRIPTION	SYM.
LIST OF MATERIAL			
THE TECHNICAL MATERIEL CORP. MAMARONECK, NEW YORK			
PLATE, GEAR, FRONT			

SIZE	CODE IDENT. NO.	DWG NO.	ISSUE
A	82679	M55205	A
SCALE	1:1	M/L	SHEET OF

UNLESS OTHERWISE SPECIFIED DIMENSIONS ARE IN INCHES AND INCLUDE CHEMICALLY APPLIED OR PLATED FINISHES

DECIMALS FRACTIONS  
 .X ± .05 1/64  
 .XX ± .01 ANGLES  
 .XXX ± .005 0°-30'

MATERIAL 1/8 THK.  
 A. ALUM. 5052-H32

FINISH S404  
 YEL. IRIDITE

S401-451

NOTICE TO PERSONS RECEIVING THIS DRAWING  
 THE TECHNICAL MATERIEL CORPORATION claims proprietary right in the material disclosed hereon. This drawing is issued in confidence for engineering information only and may not be reproduced or used to manufacture anything shown hereon without permission from THE TECHNICAL MATERIEL CORPORATION to the user. This drawing is loaned for mutual assistance and is subject to recall at any time.

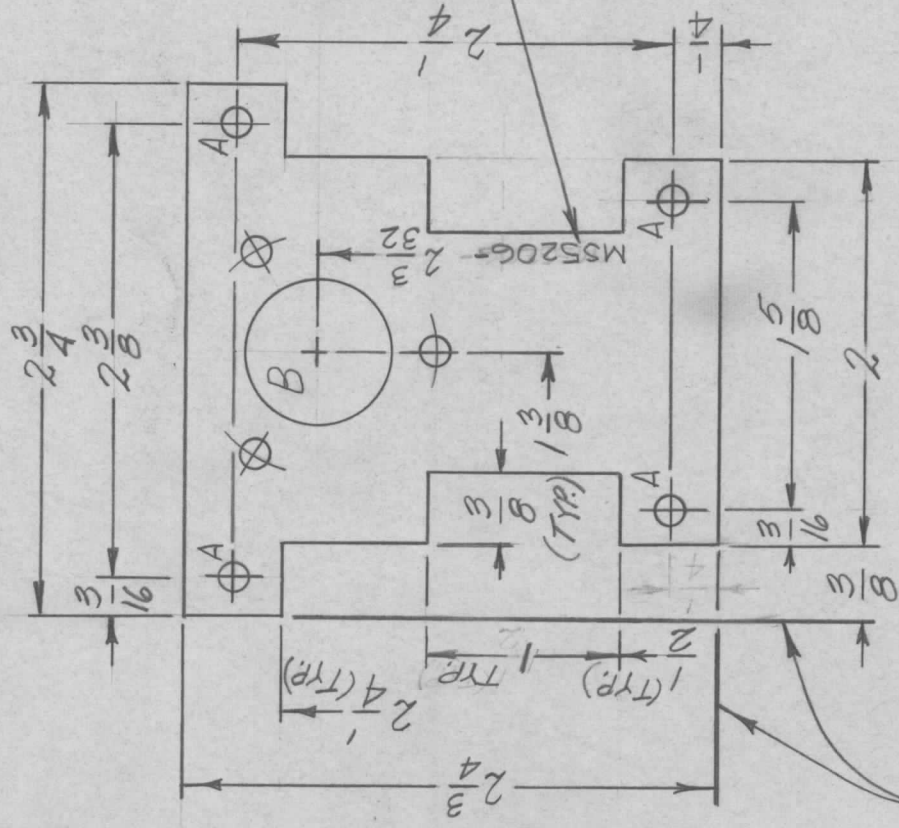


APPLICATION

QTY	MODEL USED ON	ASS'Y NO.	LTR	DESCRIPTION	DATE	E.M.N.NO	DRAFT	CHKD	APPD
1	LPA-2		X	EXP. RELEASE	10-4-67	-	MLA		
			Ø	ORIG. RELEASE FOR PROD.		Ø	R.G.		

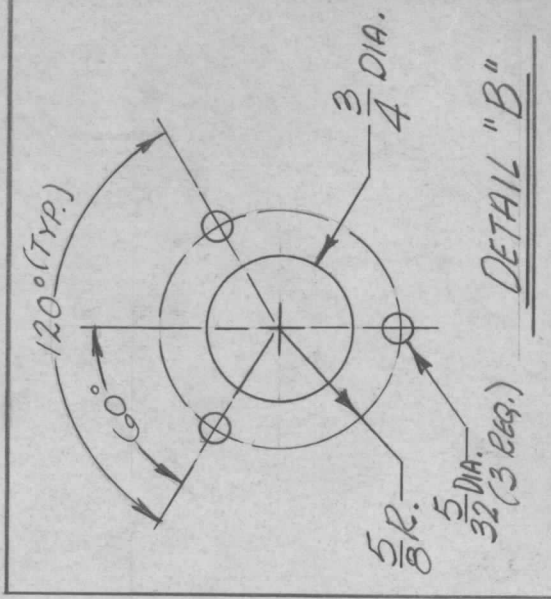
REVISIONS

QTY	MODEL USED ON	ASS'Y NO.	LTR	DESCRIPTION	DATE	E.M.N.NO	DRAFT	CHKD	APPD



**NOTE:**  
REMOVE ALL BURRS  
& SHARP EDGES.

MARK TMC PT. NO. 1/8  
HIGH GOTHIC W/LATEST  
REV. LETTER.



UNLESS OTHERWISE SPECIFIED  
DIMENSIONS ARE IN INCHES  
AND INCLUDE CHEMICALLY APPLIED  
OR PLATED FINISHES

DECIMALS FRACTIONS  
X ± .05 TOLS. 1/64  
.XX ± .01 ANGLES  
.XXX ± .005 0°-30°

MATERIAL 1/8THK.  
ALUM. 5052-H32

FINISH S404  
YEL. 18/DITE  
S401-451

REQ'D	ITEM	PART NUMBER	DESCRIPTION	SYM.
			LIST OF MATERIAL	
			THE TECHNICAL MATERIEL CORP.	
			MAMARONECK, NEW YORK	
			PLATE, GEAR, REAR	

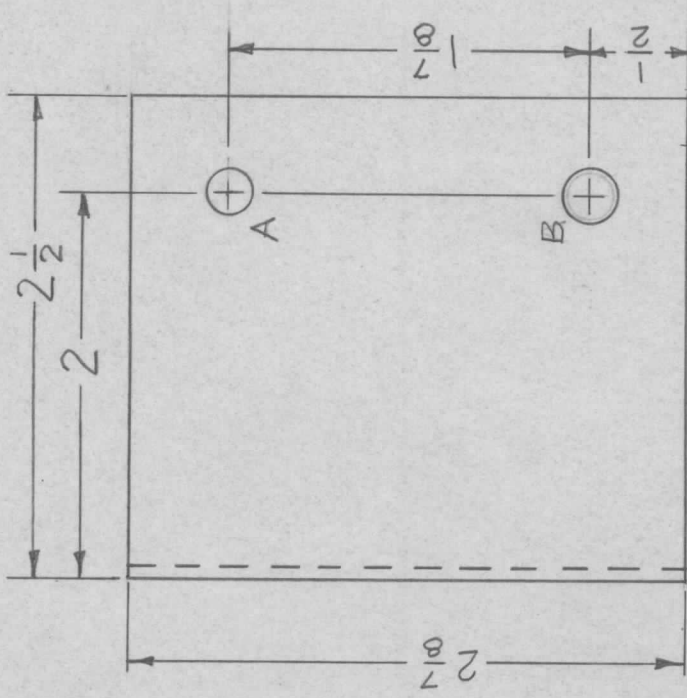
NOTICE TO PERSONS RECEIVING THIS DRAWING  
THE TECHNICAL MATERIEL CORPORATION claims proprietary right in the material  
disclosed hereon. This drawing is issued in confidence for engineering information only  
and may not be reproduced or used to manufacture anything shown hereon without  
permission from THE TECHNICAL MATERIEL CORPORATION to the user. This drawing is  
loaned for mutual assistance and is subject to recall at any time.

SIZE A	CODE IDENT. NO. 82679	DWG NO. M55206	ISSUE Ø
SCALE 1:1	MLDA	SHEET	OF

## APPLICATION

## REVISIONS

QTY	MODEL USED ON	ASS'Y NO.	LTR	DESCRIPTION	DATE	E.M.N.NO	DRAFT	CHKD	APPD
1	BCT-10KA		X	EXP. RELEASE	10.10.67		H.G.		AP
			Ø	ORIGINAL RELEASE FOR PRODUCTION	4/1/68	Ø	H.S.		H.S.



MARK TMC P/N 1/8 HIGH  
GOTHIC W/LATEST REV.  
LETTER.

HOLE	DESCRIPTION	REQ.
A	15/64 DIA.	1
B	9/32 DIA.	2

UNLESS OTHERWISE SPECIFIED  
DIMENSIONS ARE IN INCHES  
AND INCLUDE CHEMICALLY APPLIED  
OR PLATED FINISHES

DECIMALS .X ± .05  
.XX ± .01  
.XXX ± .005

FRACTIONS 1/64

TOLS. 1/64

ANGLES 0° .30'

MATERIAL 064 THK. ALUM.  
5052-H32

FINISH S404 YEL

IRIDITE

S401-451

REQ'D	ITEM	PART NUMBER	DESCRIPTION	SYM.
	BUDETTI		LIST OF MATERIAL	SK 3290 MS 2016
	BUDETTI		THE TECHNICAL MATERIEL CORP. MAMARONECK, NEW YORK	
	BUDETTI		BRACKET, MTG COIL	
FINAL APPROVAL		DATE		
		4-2-68		
MECH. DES.		DATE		
		4-2-68		
ELECT. DES.		DATE		
CHECKED		DATE		
		10.10.67		
DRAWN	H.G.			
SIZE	CODE IDENT. NO.	DWG NO.	ISSUE	
A	82679	MS 5220	Ø	
SCALE	1:1	SHEET	OF	

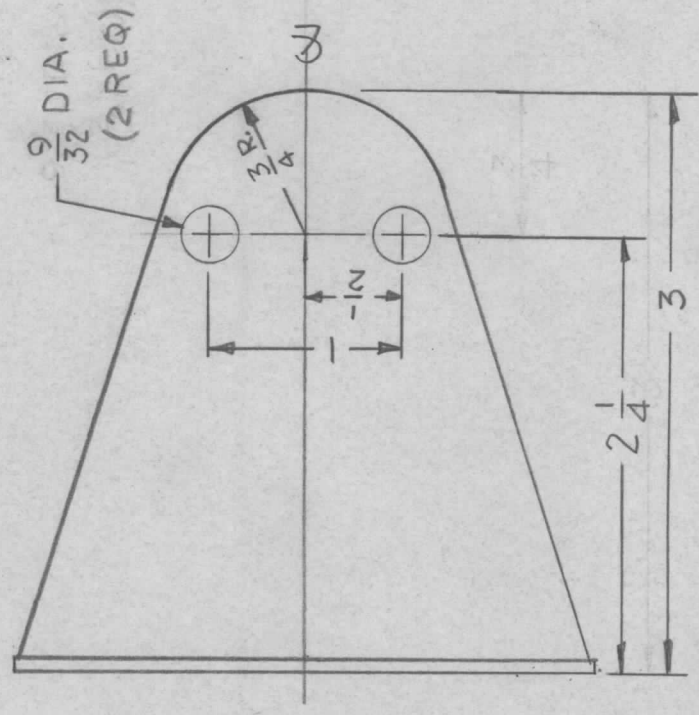
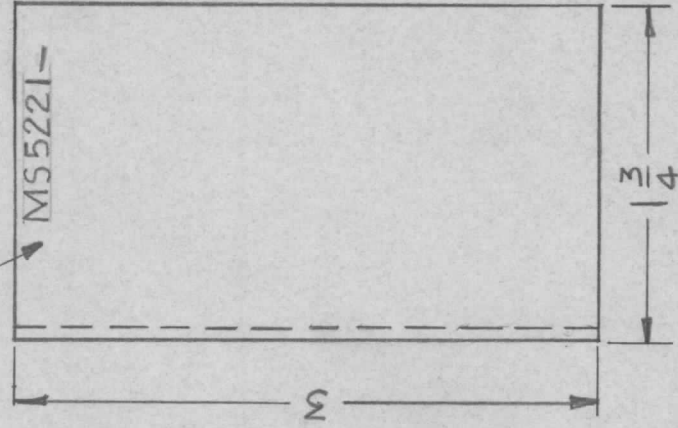
## NOTICE TO PERSONS RECEIVING THIS DRAWING

THE TECHNICAL MATERIEL CORPORATION claims proprietary right in the material disclosed hereon. This drawing is issued in confidence for engineering information only and may not be reproduced or used to manufacture anything shown hereon without permission from THE TECHNICAL MATERIEL CORPORATION to the user. This drawing is loaned for mutual assistance and is subject to recall at any time.

APPLICATION REVISIONS

QTY	MODEL USED ON	ASSY NO.	LTR	DESCRIPTION	DATE	E.M.N.NO	DRAFT	CHKD	APPD
2	BCT-10KA		X	EXP. RELEASE	11-14-67		HEY.		APP
			Ø	ORIGINAL RELEASE FOR PRODUCTION	9/1/68	Ø	HS.		JDE

MARK TMC P/N  $\frac{1}{8}$  HIGH  
GOTHIC W/LATEST REV.  
LETTER, LATEST REV



UNLESS OTHERWISE SPECIFIED:

1. USE MATERIAL THICKNESS FOR MAXIMUM RADIUS ON ALL BENDS
2. ALL ANGULAR BENDS 90 DEGREES
3. REMOVE ALL BURRS AND SHARP EDGES

REQ'D	ITEM	PART NUMBER	DESCRIPTION	SYM.
	F. BUDETTI		LIST OF MATERIAL	SK3290, MS2018
	FINAL APPROVAL	DATE		
	MECH. DES.	DATE		
	ELECT. DES.	DATE		
	CHECKED	DATE		
	DRAWN	DATE		
UNLESS OTHERWISE SPECIFIED DIMENSIONS ARE IN INCHES AND INCLUDE CHEMICALLY APPLIED OR PLATED FINISHES				
DECIMALS	FRACTIONS			
.X ± .05	1/64			
.XX ± .01	ANGLES			
.XXX ± .005	0° - 30°			
MATERIAL, 030THK M HRC COPPER				
FINISH				
CUTTER				
NONE				
S401-451				
THE TECHNICAL MATERIEL CORPORATION				
MAMARONECK, NEW YORK				
CONTACT, 4CX35000				

SIZE	CODE IDENT. NO.	DWG NO.	ISSUE
A	82679	MS 5221	Ø
SCALE	1:1	SHEET	OF

NOTICE TO PERSONS RECEIVING THIS DRAWING  
THE TECHNICAL MATERIEL CORPORATION claims proprietary right in the material disclosed hereon. This drawing is issued in confidence for engineering information only and may not be reproduced or used to manufacture anything shown hereon without permission from THE TECHNICAL MATERIEL CORPORATION to the user. This drawing is loaned for mutual assistance and is subject to recall at any time.



APPLICATION

QTY MODEL USED ON ASS'Y NO.

1 BCT 10KA

LTR

X  
∅

DESCRIPTION

EXP RELEASE  
ORIGINAL RELEASE FOR  
PRODUCTION

DATE

10-11-67  
9/1/68

E.M.N.NO

∅

DRAFT

MS  
MS

CHKD

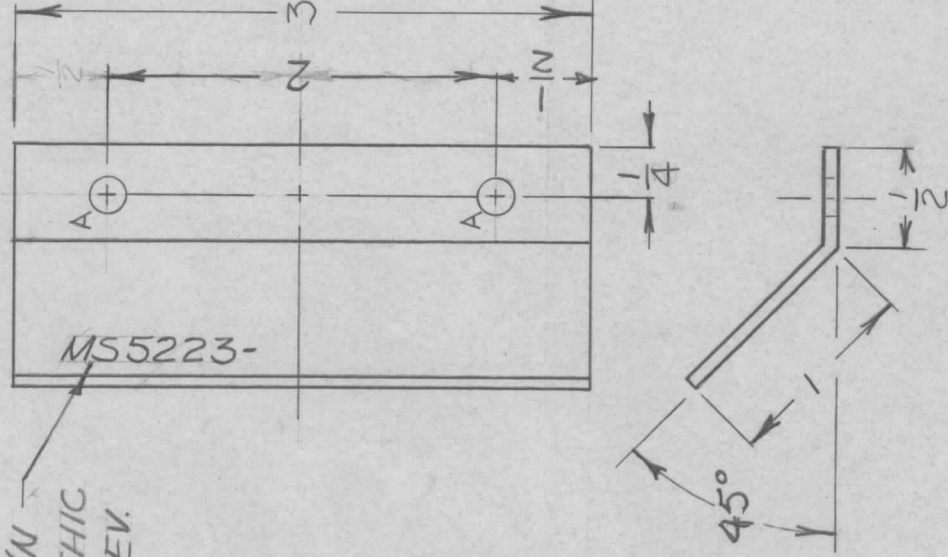
MS

APPD

MS

REVISIONS

MARK TMC P/N  
1/8 HIGH GOTHIC  
W/LATEST REV.  
LETTER.



HOLE	DESCRIPTION	REQ.
A	1/164 DIA.	2

UNLESS OTHERWISE SPECIFIED  
DIMENSIONS ARE IN INCHES  
AND INCLUDE CHEMICALLY APPLIED  
OR PLATED FINISHES

DECIMALS FRACTIONS  
.X ± .05 TOLS. 1/64  
.XX ± .01 ANGLES  
.XXX ± .005 0°-30'

MATERIAL .064 THK  
ALUMINUM 5052-H32

FINISH  
S404 YEL IRIDITE

S401-451

REQ'D

ITEM

PART NUMBER

DESCRIPTION

SYM.

BODETTI

LIST OF MATERIAL SK3290-MS2026

FINAL APPROVAL

DATE 4-1-69

MECH. DES.

DATE 4-2-68

ELECT. DES.

DATE

CHECKED

DATE 4-1-69

DRAWN

DATE 10/11/67

THE TECHNICAL MATERIEL CORP.

MAMARONECK, NEW YORK

DEFLECTOR, AIR

NOTICE TO PERSONS RECEIVING THIS DRAWING

THE TECHNICAL MATERIEL CORPORATION claims proprietary right in the material disclosed hereon. This drawing is issued in confidence for engineering information only and may not be reproduced or used to manufacture anything shown hereon without permission from THE TECHNICAL MATERIEL CORPORATION to the user. This drawing is loaned for mutual assistance and is subject to recall at any time.

SIZE

A

CODE IDENT. NO.

82679

DWG NO.

MS5223

ISSUE

∅

SCALE 1:1

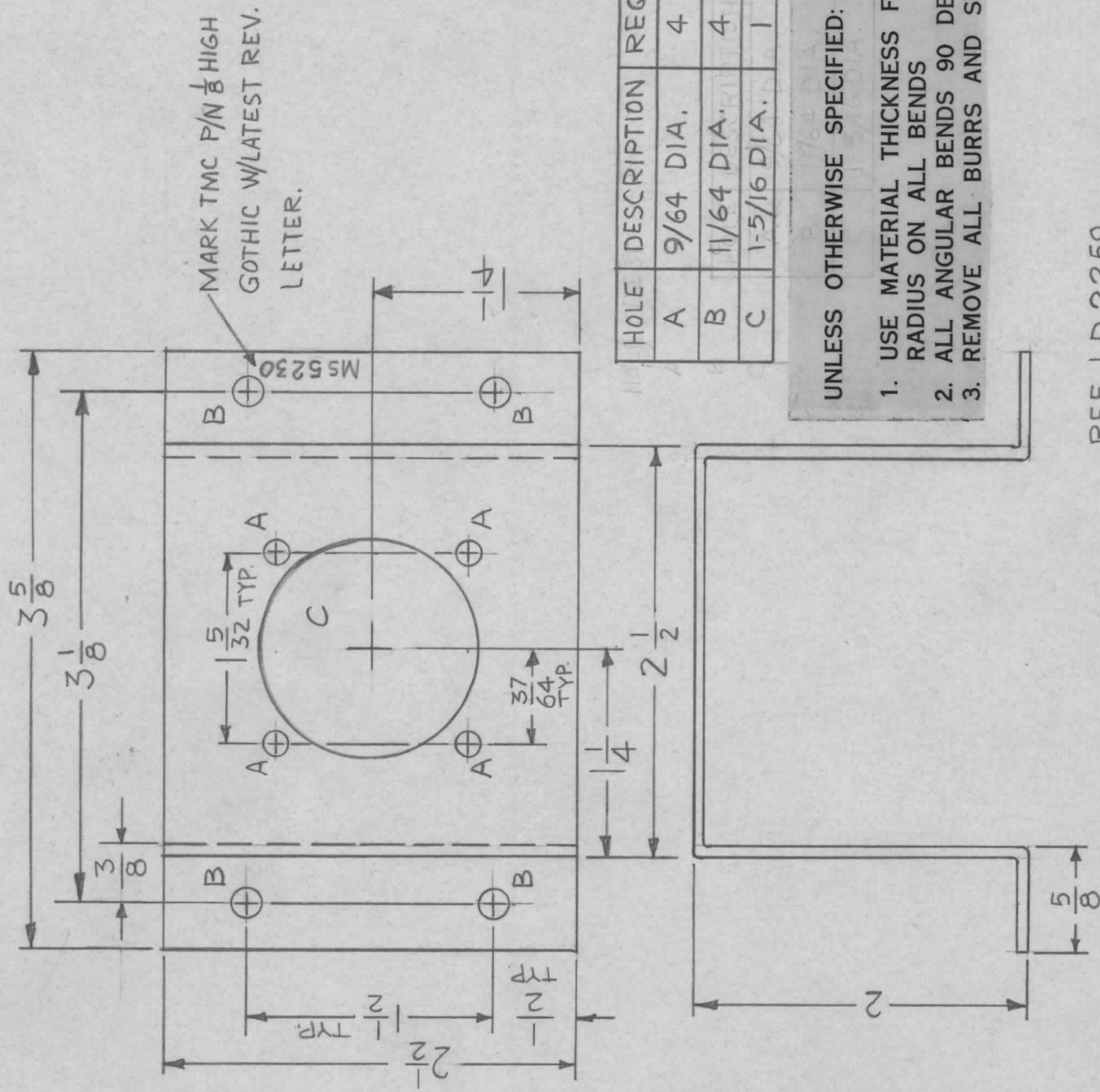
SHEET 1 OF 1

APPLICATION

QTY	MODEL USED ON	ASS'Y NO.	LTR	DESCRIPTION	DATE	E.M.N.NO	DRAFT	CHKD	APPD
2	GPT40KEL		X	EXP. RELEASE	11-1-67		HE		
			Ø	ORIG. RELEASE FOR PROD	2-15-69		RG		

REVISIONS

QTY	MODEL USED ON	ASS'Y NO.	LTR	DESCRIPTION	DATE	E.M.N.NO	DRAFT	CHKD	APPD



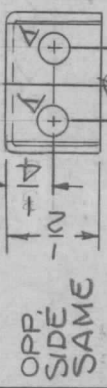
REF. LD 2259

REQ'D	ITEM	PART NUMBER	DESCRIPTION	SYM.
F. BUDETTI				
FINAL APPROVAL			DATE	
<i>[Signature]</i>			2/18/69	
MECH. DES.			DATE	
<i>[Signature]</i>			2-17-69	
ELECT. DES.			DATE	
<i>[Signature]</i>			3/17/69	
DRAWN			DATE	
<i>[Signature]</i>			11-1-67	
LIST OF MATERIAL				
THE TECHNICAL MATERIEL CORP.				
MAMARONECK, NEW YORK				
BRACKET, MTG CONN.				
SIZE	CODE IDENT. NO.	DWG NO.	ISSUE	
A	82679	MS 5230	Ø	
SCALE	1:1	SHEET	OF	

**NOTICE TO PERSONS RECEIVING THIS DRAWING**  
 THE TECHNICAL MATERIEL CORPORATION claims proprietary right in the material disclosed hereon. This drawing is issued in confidence for engineering information only and may not be reproduced or used to manufacture anything shown hereon without permission from THE TECHNICAL MATERIEL CORPORATION to the user. This drawing is loaned for mutual assistance and is subject to recall at any time.

APPLICATION

QTY	MODEL USED ON	ASSY NO.	LTR
2	RTMO-4		X
2	RTIH-3		XI
2	RTPH-3		Ø
2	RTTD-4		
2	RTTD-5		

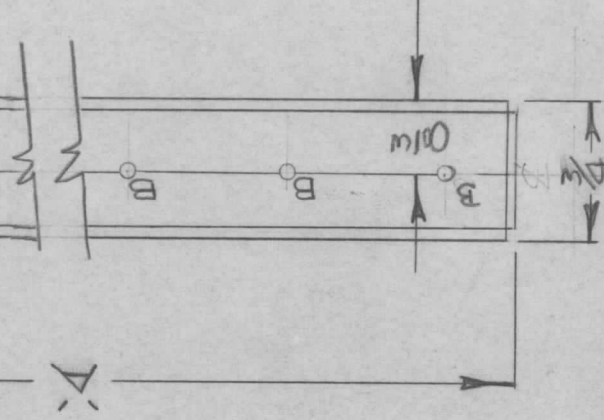


REVISIONS

DESCRIPTION	DATE	E.M.N.NO	DRAFT	CHKD	APPD
EXP RELEASE	10-23-67				
RTTD-5 ADDED	3-1-68	-#			
ORIG. RELEASE FOR PROD	11-20-68	Ø	R.G.		

TMC PART NO.	MODEL	A'DIM	B	C'DIM
MS5234-1	RTMO-4	10/4	10REQ	1"
MS5234-2	RTIH-3	8 3/8	10REQ	.812
MS5234-3	RTPH-3	4 9/16	5REQ	1"
MS5234-4	RTTD-4	11 1/16	14REQ	.812
MS5234-5	RTTD-5	8 1/4	8REQ	1"

HOLE	DIA	REQ
A	9/64	4
B	.067	SEE TABLE



\*NOTE: TOLERANCE NOT ACCUMULATIVE

REF: LD2265

REQ'D	ITEM	PART NUMBER	DESCRIPTION	SYM.
	EATON		LIST OF MATERIAL SK 3234-006-5	
	FINAL APPROVAL	DATE	THE TECHNICAL MATERIEL CORP.	
	MECH. DES.	DATE	MAMARONECK, NEW YORK	
	ELECT. DES.	DATE	CHANNEL, SUPPORT	
	CHECKED	DATE	CARD BIN, TOP SECTION	
	DRAWN	DATE		
UNLESS OTHERWISE SPECIFIED DIMENSIONS ARE IN INCHES AND INCLUDE CHEMICALLY APPLIED OR PLATED FINISHES				
DECIMALS	FRACTIONS			
.X ± .05	1/64			
.XX ± .01	TOLS.			
.XXX ± .005	ANGLES			
	°. 30'			
MATERIAL: 0.51 THK ALUMINUM 5052-H32				
FINISH 5404				
YEL. IRIDITE				
5401-451				

SIZE	CODE IDENT. NO.	DWG NO.	ISSUE
A	82679	MS 5234	Ø
SCALE	1:1	SHEET	OF

NOTICE TO PERSONS RECEIVING THIS DRAWING  
 THE TECHNICAL MATERIEL CORPORATION claims proprietary right in the material disclosed hereon. This drawing is issued in confidence for engineering information only and may not be reproduced or used to manufacture anything shown hereon without permission from THE TECHNICAL MATERIEL CORPORATION to the user. This drawing is loaned for mutual assistance and is subject to recall at any time.



## APPLICATION

QTY MODEL USED ON ASSY NO.

1 EA BCT-10KA

LTR

X  
Ø

## REVISIONS

DATE E.M.N.NO DRAFT CHKD APPD

11-3-67

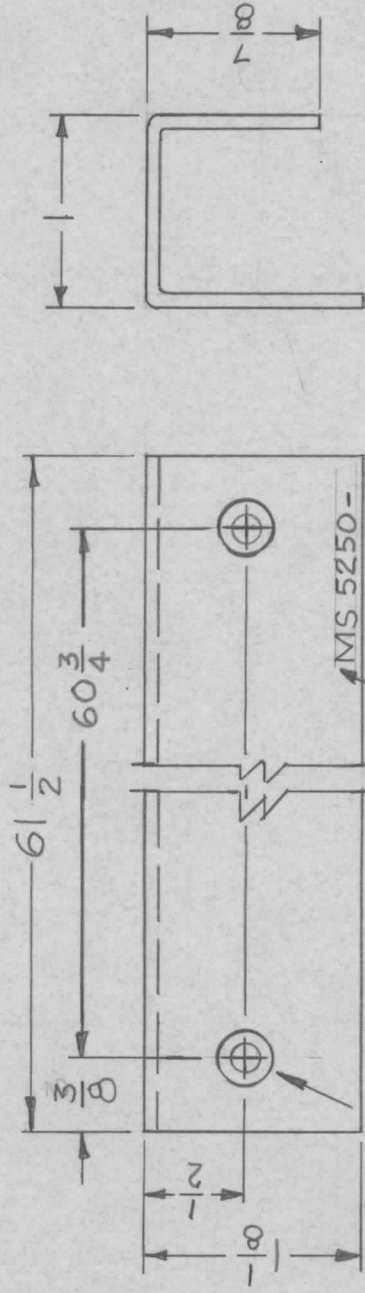
H.S.

4/1/68

H.S.

DESCRIPTION

EXP. RELEASE FOR ORIGINAL RELEASE FOR PRODUCTION



DR .144 DIA. C'SINK 82°  
TO .284 DIA. (2 REQ)

MARK TMC P/N 1/8 HIGH  
GOTHIC W/LATEST REV.  
LETTER.

TMC PART NO	AS SHOWN
MS 5250-1	AS SHOWN
MS 5250-2	OPP HAND

## UNLESS OTHERWISE SPECIFIED:

1. USE MATERIAL THICKNESS FOR MAXIMUM RADIUS ON ALL BENDS
2. ALL ANGULAR BENDS 90 DEGREES
3. REMOVE ALL BURRS AND SHARP EDGES

UNLESS OTHERWISE SPECIFIED  
DIMENSIONS ARE IN INCHES  
AND INCLUDE CHEMICALLY APPLIED  
OR PLATED FINISHES

DECIMALS  
.X ± .05  
.XX ± .01  
.XXX ± .005

FRACTIONS  
1/64  
ANGLES  
0°-30°

MATERIAL 064 ALUMINUM  
5052-H32

FINISH BLACK MATTE

5401-451

REQ'D ITEM	PART NUMBER	DESCRIPTION	SYM.
F. BUDETTI	PM	LIST OF MATERIAL	
FINAL APPROVAL	DATE 4-3-68		
MECH. DES.	DATE 4-2-68		
ELECT. DES.	DATE		
CHECKED	DATE 4-1-68		
DRAWN	DATE 11-3-67		

## LIST OF MATERIAL

THE TECHNICAL MATERIEL CORP.

MAMARONECK, NEW YORK

TRIM, SIDE

## NOTICE TO PERSONS RECEIVING THIS DRAWING

THE TECHNICAL MATERIEL CORPORATION claims proprietary right in the material disclosed hereon. This drawing is issued in confidence for engineering information only and may not be reproduced or used to manufacture anything shown hereon without permission from THE TECHNICAL MATERIEL CORPORATION to the user. This drawing is loaned for mutual assistance and is subject to recall at any time.

SIZE

A

CODE IDENT. NO.

82679

DWG NO.

MS 5250

ISSUE

Ø

SCALE 1:1

SHEET

OF

APPLICATION

QTY MODEL USED ON ASS'Y NO.

1 BCT-10KA

LTR

X

REVISIONS

E.M.N.NO DATE DESCRIPTION

11-3-67

EXP. RELEASE

DRAFT

HS.

CHKD

HS.

APPD

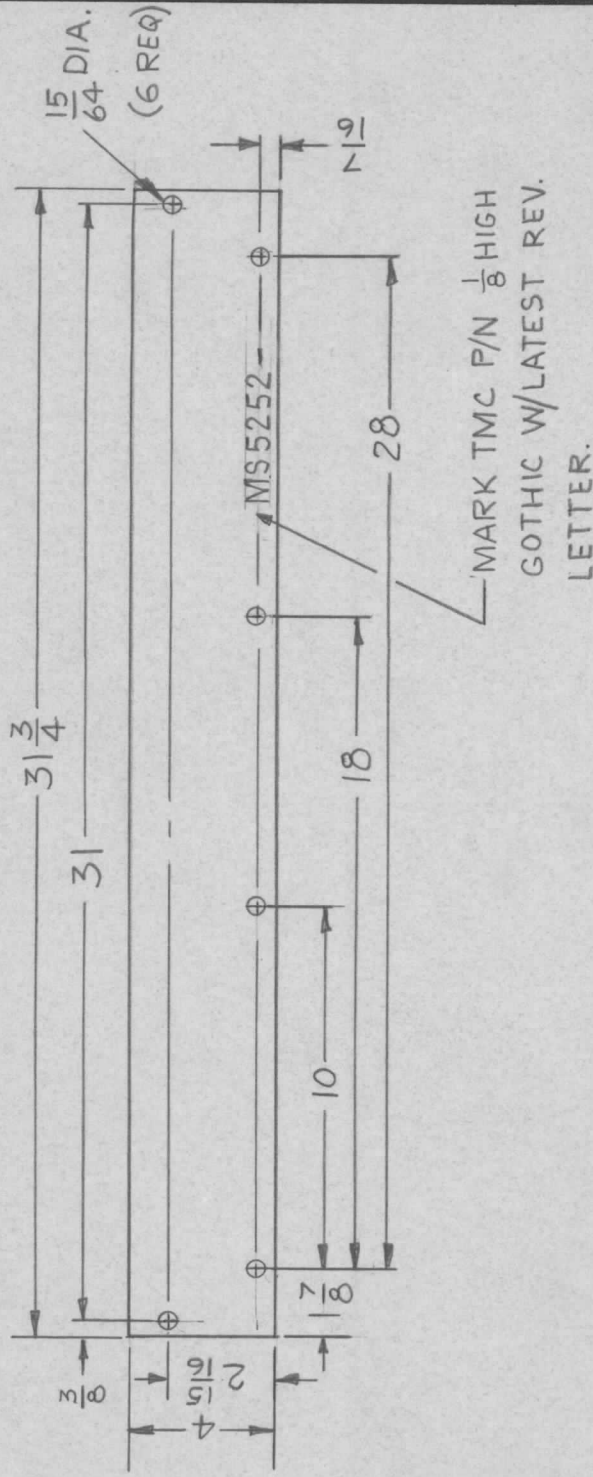
HS.

ORIGINAL RELEASE FOR PRODUCTION

Ø

HS.

HS.



UNLESS OTHERWISE SPECIFIED DIMENSIONS ARE IN INCHES AND INCLUDE CHEMICALLY APPLIED OR PLATED FINISHES

DECIMALS ± .05 TOLS. 1/64  
FRACTIONS ± .01 ANGLES 0° .30'

MATERIAL: 064 ALUMINUM  
5052-H32

FINISH: BLACK MATTE

S 401-451

REQ'D ITEM PART NUMBER DESCRIPTION SYM.

F. BUDETTI

LIST OF MATERIAL

FINAL APPROVAL	DATE
<i>[Signature]</i>	11-69
MECH. DES.	DATE
<i>[Signature]</i>	4-2-68
ELECT. DES.	DATE
<i>[Signature]</i>	11-68
CHECKED	DATE
<i>[Signature]</i>	11-3-67
DRAWN	DATE
<i>[Signature]</i>	11-3-67

THE TECHNICAL MATERIEL CORP.  
MAMARONECK, NEW YORK

PLATE, KICK

NOTICE TO PERSONS RECEIVING THIS DRAWING

THE TECHNICAL MATERIEL CORPORATION claims proprietary right in the material disclosed hereon. This drawing is issued in confidence for engineering information only and may not be reproduced or used to manufacture anything shown hereon without permission from THE TECHNICAL MATERIEL CORPORATION to the user. This drawing is loaned for mutual assistance and is subject to recall at any time.

SIZE CODE IDENT. NO. DWG NO. ISSUE

A 82679 MS 5252 Ø

SCALE 3/16 = 1 SHEET OF

## APPLICATION

QTY MODEL USED ON ASS'Y NO. LTR

2 BCT-10KA

X

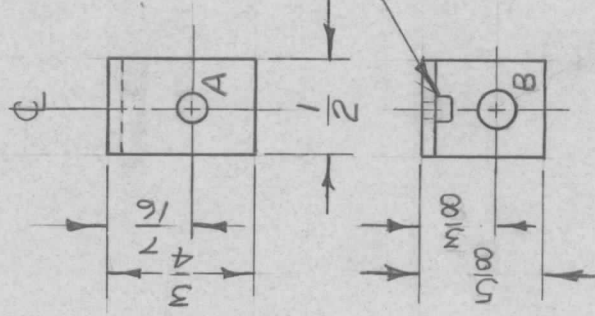
## REVISIONS

DESCRIPTION DATE E.M.N.NO DRAFT CHKD APPD

EXP. RELEASE 11/2/67

4-1-68

ORIGINAL RELEASE FOR PRODUCTION



① MOUNT IN  
"A" HOLE/OLE

## UNLESS OTHERWISE SPECIFIED:

1. USE MATERIAL THICKNESS FOR MAXIMUM RADIUS ON ALL BENDS
2. ALL ANGULAR BENDS 90 DEGREES
3. REMOVE ALL BURRS AND SHARP EDGES
4. MOUNT INSERTS AFTER FINISHING

1	1	NT129-G32-4	NUT, PLAIN SPLINE	A
REQ'D	ITEM	PART NUMBER	DESCRIPTION	SYM.
F. BUDETTI				
FINAL APPROVAL		DATE	LIST OF MATERIAL	
MECH. DES.		DATE	THE TECHNICAL MATERIEL CORP.	
ELECT. DES.		DATE	MAMARONECK, NEW YORK	
CHECKED		DATE	BRACKET, TRIM	
DRAWN		DATE		

UNLESS OTHERWISE SPECIFIED  
DIMENSIONS ARE IN INCHES  
AND INCLUDE CHEMICALLY APPLIED  
OR PLATED FINISHES

DECIMALS FRACTIONS  
.X ± .05 TOLS. 1/64  
.XX ± .01 ANGLES  
.XXX ± .005 0°-30'

MATERIAL 063 ALUMINUM  
5052-H32

FINISH S 404  
YELLOW IRIDITE  
S 401-451

## NOTICE TO PERSONS RECEIVING THIS DRAWING

THE TECHNICAL MATERIEL CORPORATION claims proprietary right in the material disclosed hereon. This drawing is issued in confidence for engineering information only and may not be reproduced or used to manufacture anything shown hereon without permission from THE TECHNICAL MATERIEL CORPORATION to the user. This drawing is loaned for mutual assistance and is subject to recall at any time.

SIZE A CODE IDENT. NO. 82679 DWG NO. MS 5253 ISSUE  $\emptyset$

SCALE 1:1 SHEET OF

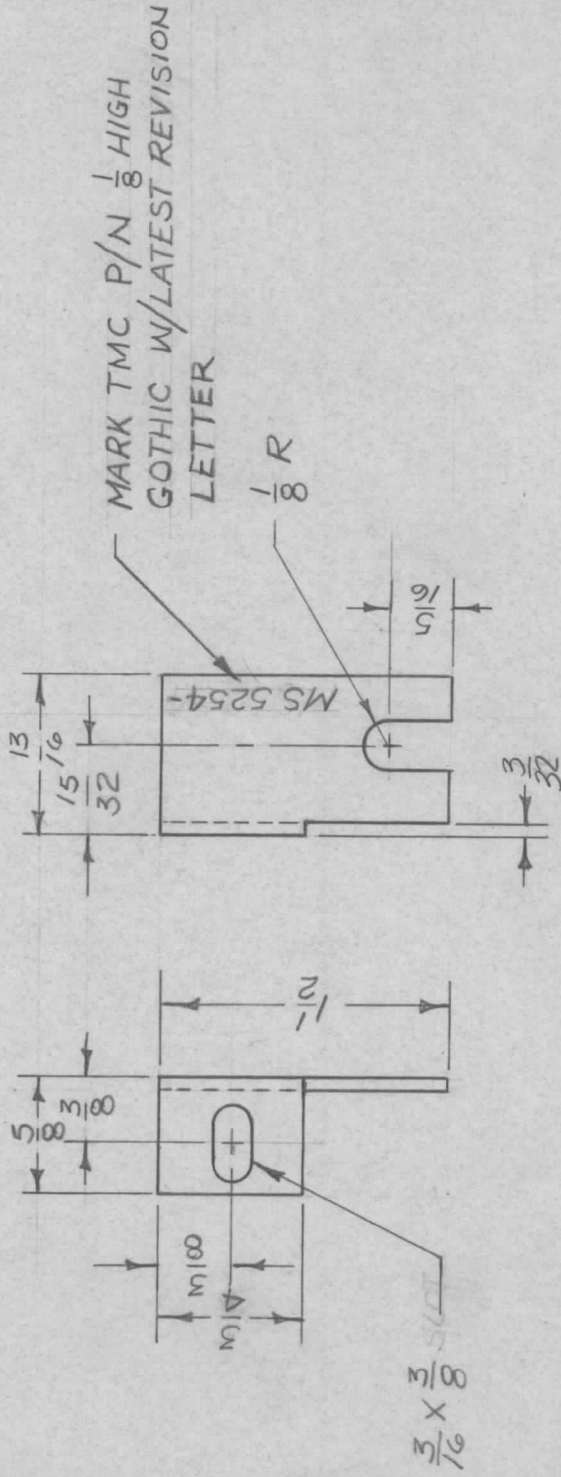


## APPLICATION

QTY	MODEL USED ON	ASS'Y NO.	LTR
1EA	BCT-10KA		X

## REVISIONS

DESCRIPTION	DATE	E.M.N.NO	DRAFT	CHKD	APPD
EXPERIMENTAL RELEASE	11/2/67		End		
CHART ADDED	4/5/68	X1	H.G.		
ORIG. RELEASE FOR PROD.	4/15/68		R.G.		



TMC P/N	DESCRIPTION
MS5254-1	AS SHOWN
MS5254-2	OPPOSITE HAND

## UNLESS OTHERWISE SPECIFIED:

1. USE MATERIAL THICKNESS FOR MAXIMUM RADIUS ON ALL BENDS
2. ALL ANGULAR BENDS 90 DEGREES
3. REMOVE ALL BURRS AND SHARP EDGES

UNLESS OTHERWISE SPECIFIED  
DIMENSIONS ARE IN INCHES  
AND INCLUDE CHEMICALLY APPLIED  
OR PLATED FINISHES

DECIMALS  
.X ± .05  
.XX ± .01  
.XXX ± .005

FRACTIONS  
1/64  
ANGLES  
0° - 30°

MATERIAL, 063 ALUMINUM  
5052-H32

FINISH S404  
YELLOW IRIDITE

S401-451

REQ'D ITEM PART NUMBER

F. BUDETTI ON

FINAL APPROVAL

DATE 4/5/68

MECH. DES.

DATE 4/15/68

ELECT. DES.

DATE 4/15/68

CHECKED

DATE 4-1-68

DRAWN

DATE 11/2/67

DESCRIPTION

LIST OF MATERIAL

THE TECHNICAL MATERIEL CORP.

MAMARONECK, NEW YORK

BRACKET, TRIM

## NOTICE TO PERSONS RECEIVING THIS DRAWING

THE TECHNICAL MATERIEL CORPORATION claims proprietary right in the material disclosed hereon. This drawing is issued in confidence for engineering information only and may not be reproduced or used to manufacture anything shown hereon without permission from THE TECHNICAL MATERIEL CORPORATION to the user. This drawing is loaned for mutual assistance and is subject to recall at any time.

SIZE

A 82679

CODE IDENT. NO.

MS 5254

ISSUE

Ø

SCALE 1:1

SHEET

OF

APPLICATION

QTY MODEL USED ON ASS'Y NO.

1 GPT40KEL

LTR

X

DESCRIPTION

EXP. RELEASE

DATE

10-31-67

E.M.N.NO

DRAFT

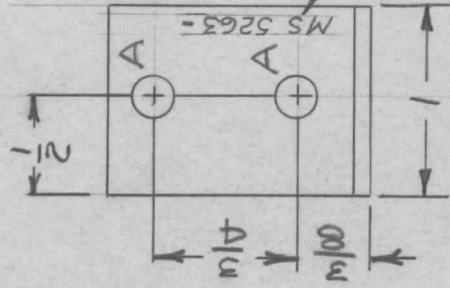
GE

CHKD

APPD

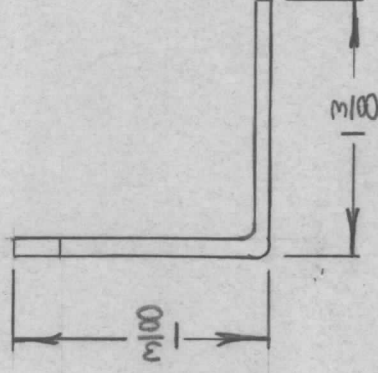
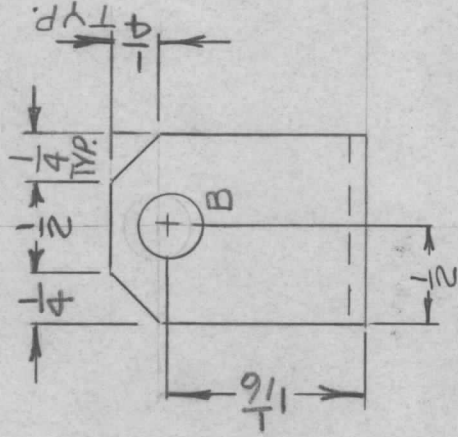
REVISIONS

ORIG RELEASE FOR PROD 7/11/69



HOLE	DIA	REQ
A	13/64	2
B	2/64	1

MARK TMC P/N 1/8 HIGH  
GOTHIC W/LATEST REV.  
LETTER



UNLESS OTHERWISE SPECIFIED  
DIMENSIONS ARE IN INCHES  
AND INCLUDE CHEMICALLY APPLIED  
OR PLATED FINISHES

DECIMALS .X ± .05  
.XX ± .01  
.XXX ± .005

FRACTIONS 1/64  
TOLS. 1/64  
ANGLES 0° .307

MATERIAL .081 ALUMINUM  
6063 T5

FINISH S404  
YEL IRIDITE

S401 - 451

REQ'D ITEM

F. BUDETTI

PART NUMBER

DESCRIPTION

SYM.

LIST OF MATERIAL

THE TECHNICAL MATERIEL CORP.  
MAMARONECK, NEW YORK

BRKT, RELAY

NOTICE TO PERSONS RECEIVING THIS DRAWING  
THE TECHNICAL MATERIEL CORPORATION claims proprietary right in the material  
disclosed hereon. This drawing is issued in confidence for engineering information only  
and may not be reproduced or used to manufacture anything shown hereon without  
permission from THE TECHNICAL MATERIEL CORPORATION to the user. This drawing is  
loaned for mutual assistance and is subject to recall at any time.

SIZE CODE IDENT. NO. DWG NO. ISSUE

A 82679 MS5263

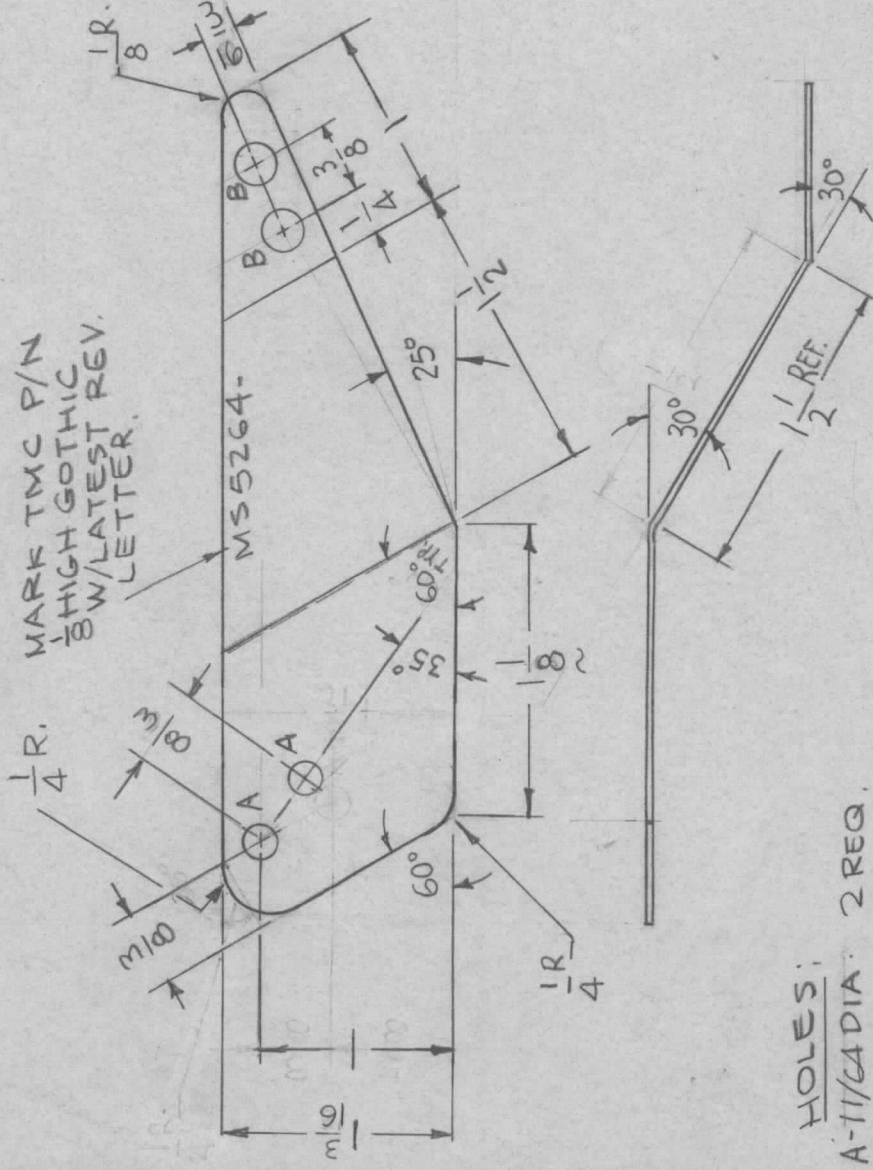
SCALE SHEET OF

APPLICATION

QTY	MODEL USED ON	ASSY NO.	LTR	DESCRIPTION	DATE	E.M.N.NO	DRAFT	CHKD	APPD
11	TLAA-2.5K		X	EXP. RELEASE	11-10-67				
			XI	3/16 WAS 3/8, 1/8 WAS 1/2	12-14-67				
			Ø	ORIG. RELEASE FOR PROD.	1-18-68	Ø	R.G.		

REVISIONS

QTY	MODEL USED ON	ASSY NO.	LTR	DESCRIPTION	DATE	E.M.N.NO	DRAFT	CHKD	APPD
			X	EXP. RELEASE	11-10-67				
			XI	3/16 WAS 3/8, 1/8 WAS 1/2	12-14-67				
			Ø	ORIG. RELEASE FOR PROD.	1-18-68	Ø	R.G.		



HOLES;  
 A-11/64 DIA. 2 REQ.  
 B-13/64 DIA. 2 REQ.

REQ'D ITEM	PART NUMBER	DESCRIPTION	SYM.
F. BUDETTIN LIST OF MATERIAL			
FINAL APPROVAL	DATE	THE TECHNICAL MATERIEL CORP.	
MECH. DES.	DATE	MAMARONECK, NEW YORK	
ELECT. DES.	DATE	CONTACT, ELECTRICAL	
CHECKED	DATE	SIZE	CODE IDENT. NO.
DRAWN	DATE	A	82679
		SCALE	DWG NO.
		1:1	MS 5264
NOTICE TO PERSONS RECEIVING THIS DRAWING		SHEET	OF
THE TECHNICAL MATERIEL CORPORATION claims proprietary right in the material disclosed hereon. This drawing is issued in confidence for engineering information only and may not be reproduced or used to manufacture anything shown hereon without permission from THE TECHNICAL MATERIEL CORPORATION to the user. This drawing is loaned for mutual assistance and is subject to recall at any time.			ISSUE
			Ø



APPLICATION

QTY MODEL USED ON ASSY NO. LTR

1 TLAA-2.5K

X

EXP. RELEASE

REVISIONS

DATE E.M.N.NO DRAFT CHKD APPD

11-9-67

11-9-67

H.R.

APPD

X1

7/16 WAS 3/8, 2-3/4 WAS 2-1/16, 2-7/16 WAS 2-1/2

12-22-67

+

H.R.

APPD

Ø

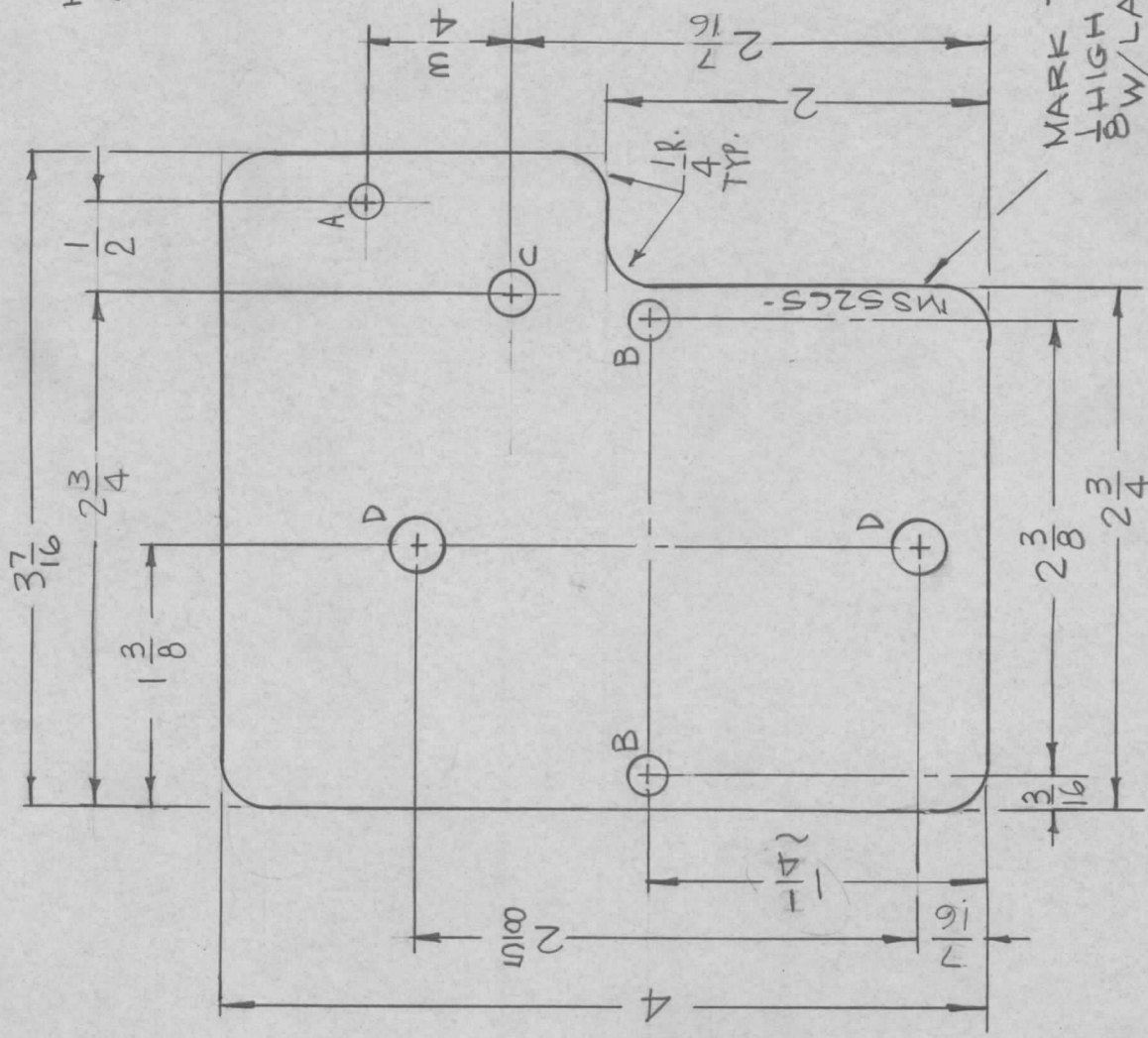
ORIG. RELEASE FOR PROD.

1-18-68

Ø

R.G.

APPD



- HOLES: REQ.
- A - 11/64 DIA. 1
  - B - 13/64 DIA. 2
  - C - 15/64 DIA. 1
  - D - 9/32 DIA. 2

UNLESS OTHERWISE SPECIFIED DIMENSIONS ARE IN INCHES AND INCLUDE CHEMICALLY APPLIED OR PLATED FINISHES

DECIMALS FRACTIONS  
 .X ± .05 TOLS. 1/64  
 .XX ± .01 ANGLES  
 .XXX ± .005 0°-30'

MATERIAL 064 THK ALUMINUM 5052-H32  
 FINISH S245 SIL.PL. 5423 SIL.KOTE  
 5401-451

REQ'D ITEM PART NUMBER DESCRIPTION SYM.

F. BUDETTI

LIST OF MATERIAL

DESCRIPTION

SYM.

FINAL APPROVAL DATE 1/18/68

MECH. DES. DATE 12/13/67

ELECT. DES. DATE 1-18-68

CHECKED DATE 1-18-68

DRAWN DATE 11-10-67

THE TECHNICAL MATERIEL CORP.

MAMARONECK, NEW YORK

PLATE, COUPLING CAP

NOTICE TO PERSONS RECEIVING THIS DRAWING

THE TECHNICAL MATERIEL CORPORATION claims proprietary right in the material disclosed hereon. This drawing is issued in confidence for engineering information only and may not be reproduced or used to manufacture anything shown hereon without permission from THE TECHNICAL MATERIEL CORPORATION to the user. This drawing is loaned for mutual assistance and is subject to recall at any time.

SIZE CODE IDENT. NO. DWG NO. ISSUE

A

82679

MS 5265

Ø

SCALE 1:1

SHEET

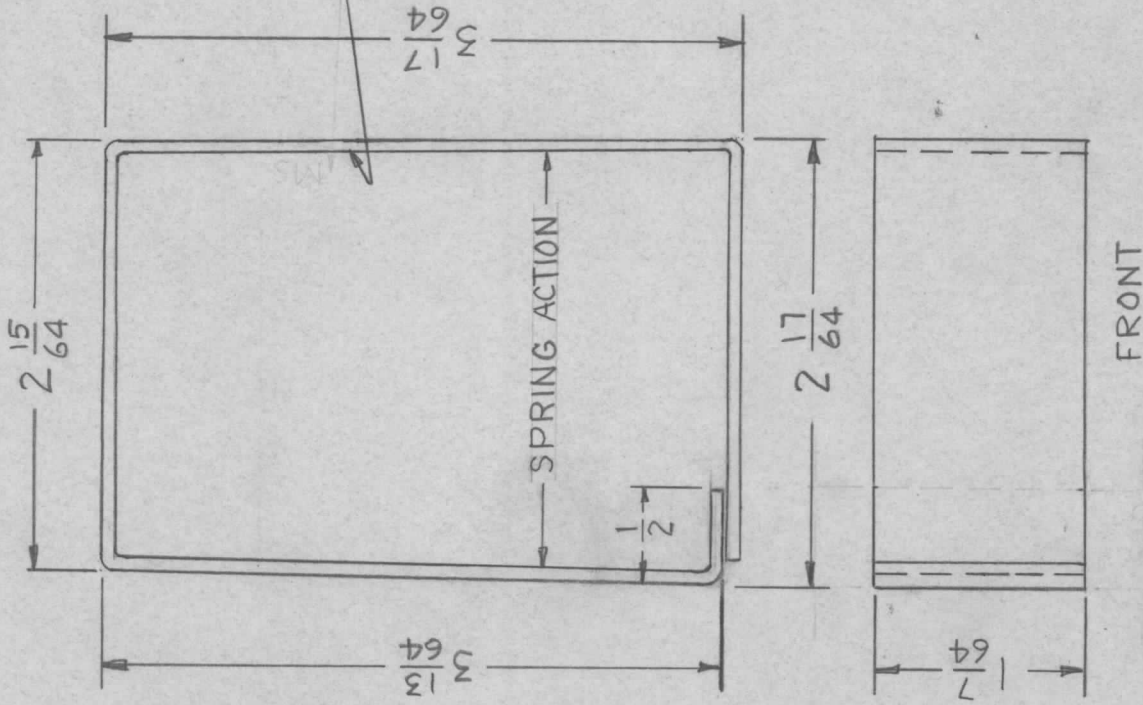
OF

APPLICATION

QTY	MODEL USED ON	ASSY NO.	LTR
1	RTIH-3		X
			Ø

REVISIONS

DESCRIPTION	DATE	E.M.N.NO	DRAFT	CHKD	APPD
EXP. RELEASE	11-22-67	+	HG		
Ø ORIG. RELEASE	12-4-68			SG	



MARK TMC P/N MS 5269 -  
 1/8 HIGH GOTHIC W/LATEST  
 REV. LETTER.

UNLESS OTHERWISE SPECIFIED:

1. USE MATERIAL THICKNESS FOR MAXIMUM RADIUS ON ALL BENDS
2. ALL ANGULAR BENDS 90 DEGREES
3. REMOVE ALL BURRS AND SHARP EDGES

UNLESS OTHERWISE SPECIFIED DIMENSIONS ARE IN INCHES AND INCLUDE CHEMICALLY APPLIED OR PLATED FINISHES	REQ'D	ITEM	PART NUMBER	DESCRIPTION	SYM.
DECIMALS ± .05 TOLS. 1/64	F.	FEATON		LIST OF MATERIAL	
.XX ± .01 ANGLES 0° .30'	FIN. APPROVAL			THE TECHNICAL MATERIEL CORP.	
.XXX ± .005	<i>S.M. Harris</i>			MAMARONECK, NEW YORK	
MATERIAL .062 ALUMINUM 5052-H32	MECH. DES.			SPACER, READOUT	
FINISH BLACK ANODIZE	ELECT. DES.				
S401-451	CHECKED	SG			
	DRAWN	HG			
	DATE	11-22-67			
	DATE	12/3/68			

NOTICE TO PERSONS RECEIVING THIS DRAWING  
 THE TECHNICAL MATERIEL CORPORATION claims proprietary right in the material disclosed hereon. This drawing is issued in confidence for engineering information only and may not be reproduced or used to manufacture anything shown hereon without permission from THE TECHNICAL MATERIEL CORPORATION to the user. This drawing is loaned for mutual assistance and is subject to recall at any time.

SIZE	CODE IDENT. NO.	DWG NO.	ISSUE
A	82679	MS 5269	1
SCALE	1:1	SHEET	OF

## APPLICATION

QTY MODEL USED ON ASSY NO.

2 RTIH-3

LTR

X

## REVISIONS

DESCRIPTION

EXP. RELEASE  
Ø ORIG. RELEASE

DATE

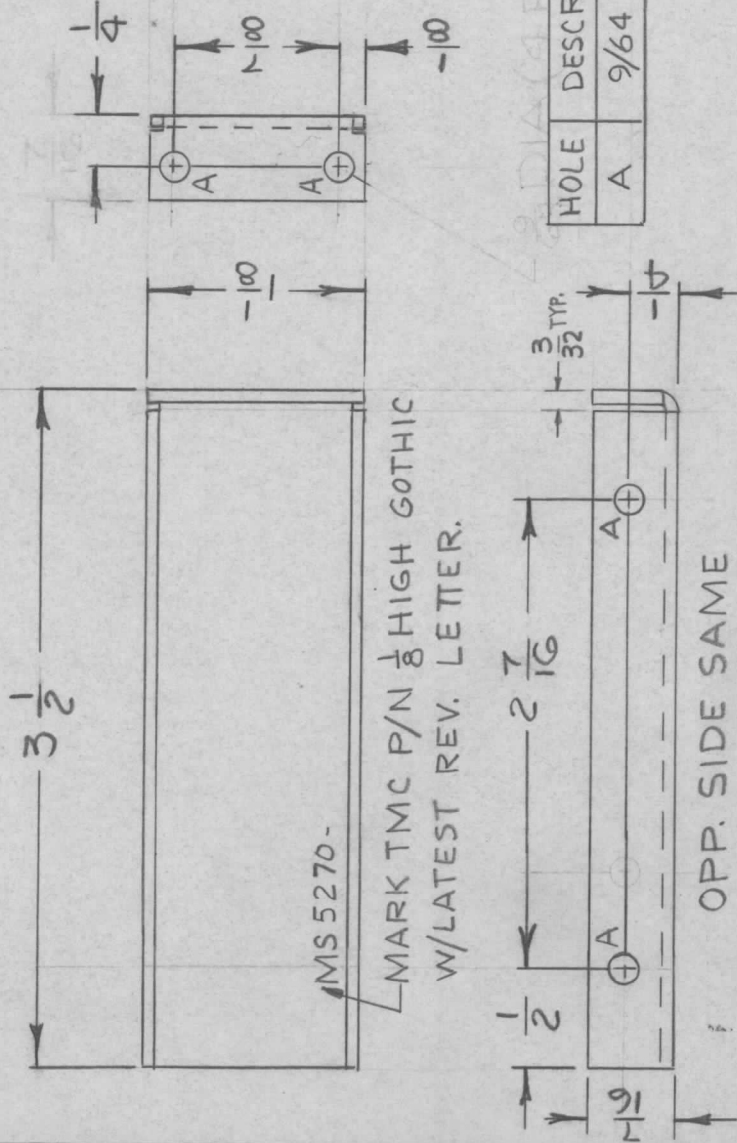
11-15-67  
12-3-68

E.M.N.NO.

DRAFT

CHKD

APPD

133. M  
56 JJO

HOLE	DESCRIPTION	REQ
A	9/64 DIA.	6

OPP. SIDE SAME

UNLESS OTHERWISE SPECIFIED:

1. USE MATERIAL THICKNESS FOR MAXIMUM RADIUS ON ALL BENDS
2. ALL ANGULAR BENDS 90 DEGREES
3. REMOVE ALL BURRS AND SHARP EDGES

UNLESS OTHERWISE SPECIFIED  
DIMENSIONS ARE IN INCHES  
AND INCLUDE CHEMICALLY APPLIED  
OR PLATED FINISHES

DECIMALS	FRACTIONS
.X ± .05	1/64
.XX ± .01	ANGLES
.XXX ± .005	0° - 30°

MATERIAL: 062 THK  
ALUM 5052-H32  
FINISH S404  
YEL. IRIDITE  
S401-451

REQ'D

ITEM

PART NUMBER

DESCRIPTION

SYM.

FINAL APPROVAL  
*S. Williams* 12/3/68  
DATE

MECH. DES.  
DATE

ELECT. DES.  
DATE

CHECKED  
SG.  
DATE

DRAWN  
*S. Williams*  
DATE

LIST OF MATERIAL

SK3253-002-11

THE TECHNICAL MATERIEL CORP.

MAMARONECK, NEW YORK

PLATE END, READ OUT  
CASE

NOTICE TO PERSONS RECEIVING THIS DRAWING

THE TECHNICAL MATERIEL CORPORATION claims proprietary right in the material disclosed hereon. This drawing is issued in confidence for engineering information only and may not be reproduced or used to manufacture anything shown hereon without permission from THE TECHNICAL MATERIEL CORPORATION to the user. This drawing is loaned for mutual assistance and is subject to recall at any time.

SIZE

A

CODE IDENT. NO.

MS 5270

ISSUE

Ø

SCALE 1:1

SHEET

OF

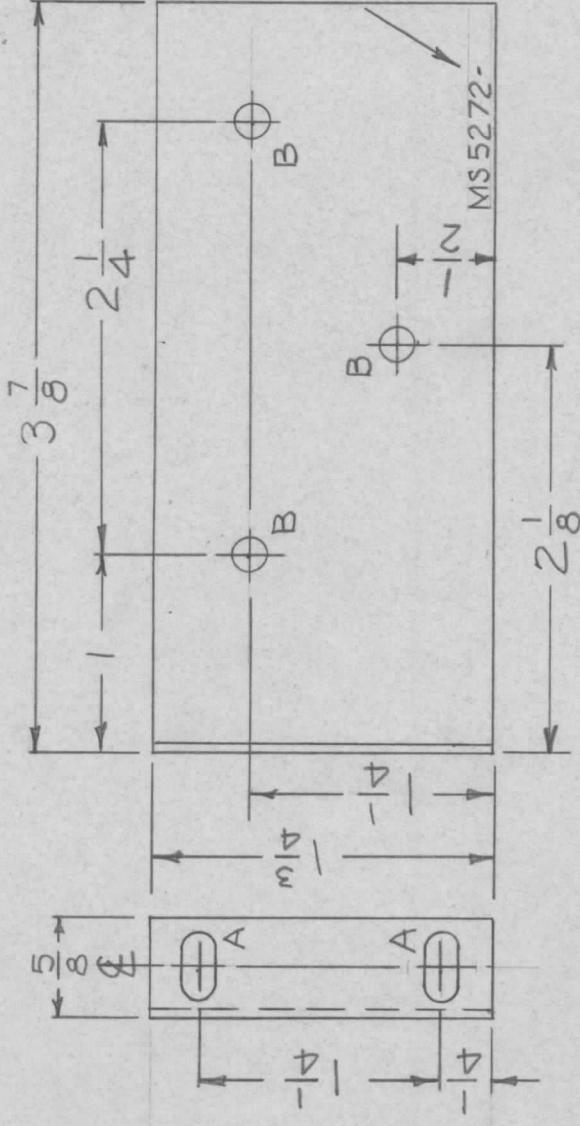


## APPLICATION

QTY	MODEL USED ON	ASS'Y NO.	LTR
1 EA	BCT-10KA	AX683	X

## REVISIONS

DESCRIPTION	DATE	E.M.N.NO	DRAFT	CHKD	APPD
EXP. RELEASE	1-2-68	-	H.S.	H.S.	GC
ORIGINAL RELEASE FOR PRODUCTION	4/1/68	Ø	H.S.	H.S.	JHQ



TMC P/N	DESCRIPTION
MS5272-1	AS SHOWN
MS5272-2	OPP HAND

HOLE	DESCRIPTION	REQ
A	11/64 X 11/32 SLOT	2
B	11/64 DIA.	3

## UNLESS OTHERWISE SPECIFIED:

1. USE MATERIAL THICKNESS FOR MAXIMUM RADIUS ON ALL BENDS
2. ALL ANGULAR BENDS 90 DEGREES
3. REMOVE ALL BURRS AND SHARP EDGES

UNLESS OTHERWISE SPECIFIED  
DIMENSIONS ARE IN INCHES  
AND INCLUDE CHEMICALLY APPLIED  
OR PLATED FINISHES

DECIMALS  
.X ± .05  
.XX ± .01  
.XXX ± .005

FRACTIONS  
1/64

TOLS.  
ANGLES  
0°-30°

MATERIAL 051 ALUMINUM  
5052-H32

FINISH S404 YEL.  
IRIDITE

S401-451

REQ'D ITEM	PART NUMBER	DESCRIPTION	SYM.
F. BUDETTI		LIST OF MATERIAL	
FINAL APPROVAL	DATE	THE TECHNICAL MATERIEL CORP. MAMARONECK, NEW YORK	
MECH. DES.	DATE	BRKKT, MTG, RES	
ELECT. DES.	DATE	SIZE	ISSUE
CHECKED	DATE	A	Ø
DRAWN	DATE	SCALE	DWG NO.
	1-2-68		MS 5272
			SHEET
			OF

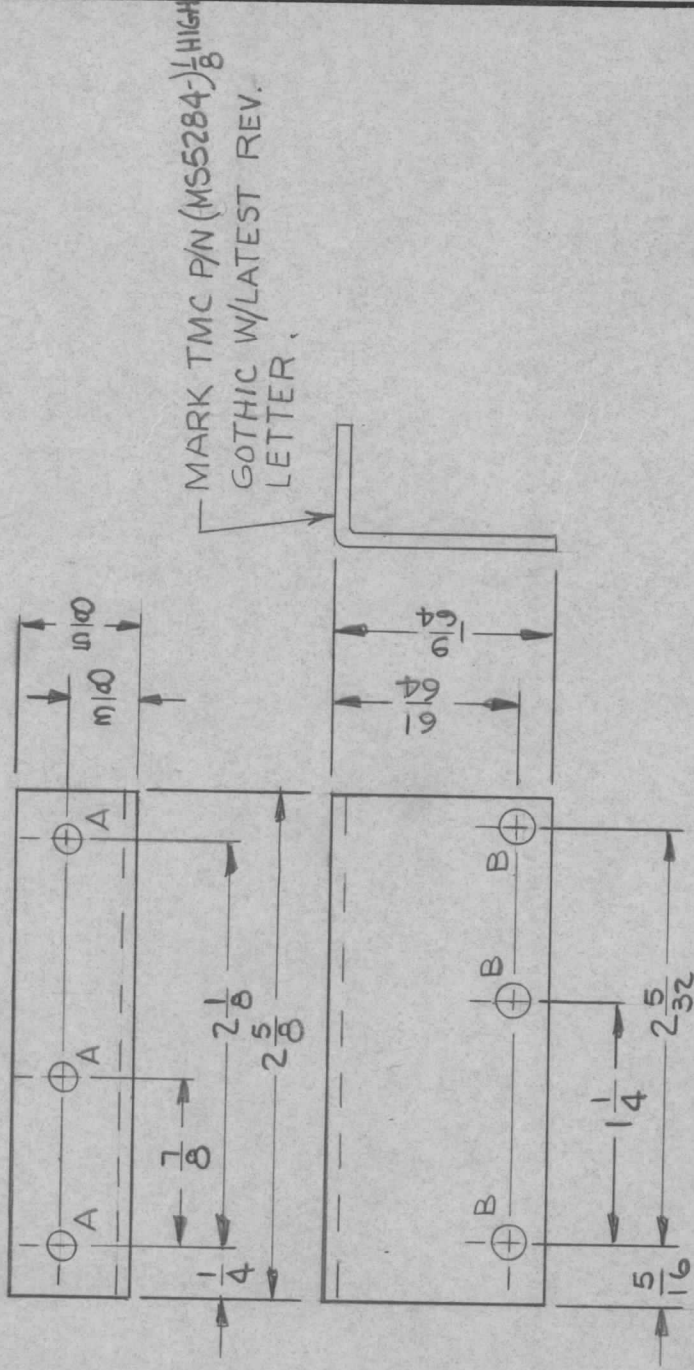
## NOTICE TO PERSONS RECEIVING THIS DRAWING

THE TECHNICAL MATERIEL CORPORATION claims proprietary right in the material disclosed hereon. This drawing is issued in confidence for engineering information only and may not be reproduced or used to manufacture anything shown hereon without permission from THE TECHNICAL MATERIEL CORPORATION to the user. This drawing is loaned for mutual assistance and is subject to recall at any time.

## APPLICATION

QTY	MODEL USED ON	ASS'Y NO.	LTR	DESCRIPTION	DATE	E.M.N.NO	DRAFT	CHKD	APPD
1	HFR-4		X	EXP. RELEASE	7.21.67		JL		
			Ø	ORIG. RELEASE FOR PROD.	11-6-68	Ø	R.G.		JL

## REVISIONS



## HOLE LEGEND

HOLE	DESCRIPTION	REQ
A	9/64 DIA	3
B	11/64 DIA	3

UNLESS OTHERWISE SPECIFIED:

1. USE MATERIAL THICKNESS FOR MAXIMUM RADIUS ON ALL BENDS
2. ALL ANGULAR BENDS 90 DEGREES
3. REMOVE ALL BURRS AND SHARP EDGES

UNLESS OTHERWISE SPECIFIED  
DIMENSIONS ARE IN INCHES  
AND INCLUDE CHEMICALLY APPLIED  
OR PLATED FINISHES

DECIMALS  
.X ± .05  
.XX ± .01  
.XXX ± .005

FRACTIONS  
1/64  
ANGLES  
0° 30'

MATERIAL 0.081 THICK  
ALUMINUM 5052-H32  
FINISH S404 YEL  
IRIDITE

5401-451

REQ'D ITEM

PART NUMBER

DESCRIPTION

SYM.

HOGAN (ZETENA)

LIST OF MATERIAL SK3252-003-15

THE TECHNICAL MATERIEL CORP.

MAMARONECK, NEW YORK

BKT, M.T.G., BLEDEX CHASSIS

## NOTICE TO PERSONS RECEIVING THIS DRAWING

THE TECHNICAL MATERIEL CORPORATION claims proprietary right in the material disclosed hereon. This drawing is issued in confidence for engineering information only and may not be reproduced or used to manufacture anything shown hereon without permission from THE TECHNICAL MATERIEL CORPORATION to the user. This drawing is loaned for mutual assistance and is subject to recall at any time.

SIZE

A 82679

CODE IDENT. NO.

DWG NO.

MS5284

ISSUE

Ø

SCALE 1:1

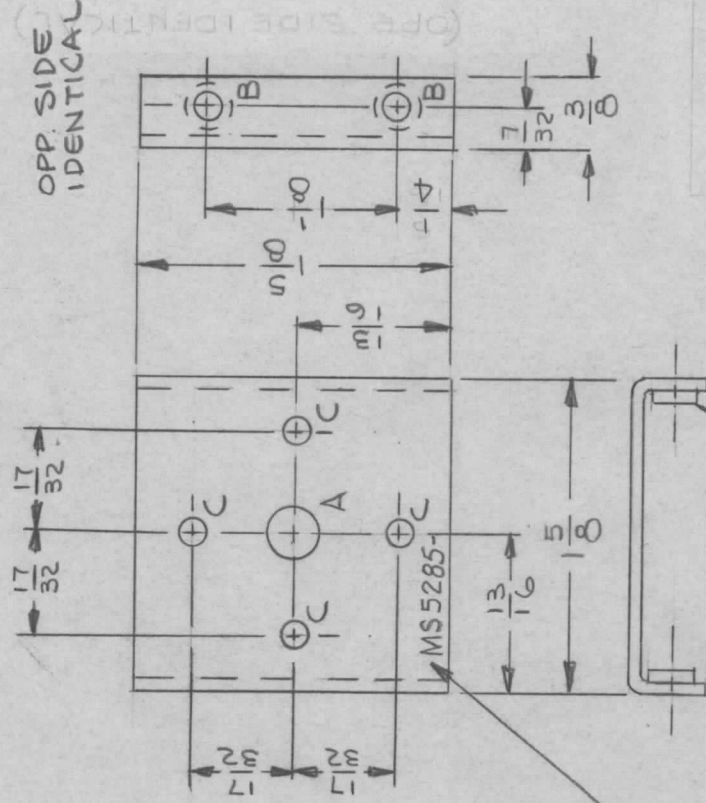
SHEET

OF

## APPLICATION

## REVISIONS

QTY	MODEL USED ON	ASSY NO.	LTR	DESCRIPTION	DATE	E.M.N.NO.	DRAFT	CHKD	APPD
5	MSAR-4		X	EXP. RELEASE	11/17/67		JL		
1	HFRR-4		Ø	ORIG. RELEASE FOR PROD.	11-6-68	Ø	R.G.		JLS



MARK TMC P/N  
 $\frac{1}{8}$  HIGH GOTHIC  
 W/LATEST REV.  
 LETTER

1 MOUNT IN ALL  
 "B" HOLES

HOLE	DESCRIPTION	REQ
A	13/32 DIA.	1
B	.161-.164 DIA.	4
C	5/32 DIA.	4

UNLESS OTHERWISE SPECIFIED:

1. USE MATERIAL THICKNESS FOR MAXIMUM RADIUS ON ALL BENDS
2. ALL ANGULAR BENDS 90 DEGREES
3. REMOVE ALL BURRS AND SHARP EDGES
4. MOUNT INSERTS AFTER FINISHING

REQ'D	ITEM	PART NUMBER	DESCRIPTION	SYM.
4	1	NT129-4404	NUT, PLAIN, SPLINE	B
HOGAN (ZETENA)				
LIST OF MATERIAL SK 3252-005-13			THE TECHNICAL MATERIEL CORP.	
			MAMARONECK, NEW YORK	
SUPPORT, FRONT, LEDEX CHASSIS				
NOTICE TO PERSONS RECEIVING THIS DRAWING			DISCLOSED HEREON.	
THE TECHNICAL MATERIEL CORPORATION claims proprietary right in the material disclosed hereon. This drawing is issued in confidence for engineering information only and may not be reproduced or used to manufacture anything shown hereon without permission from THE TECHNICAL MATERIEL CORPORATION to the user. This drawing is loaned for mutual assistance and is subject to recall at any time.				
FINISH APPROVAL			DATE	
MECH. DES.			DATE	
ELECT. DES.			DATE	
CHECKED			DATE	
DRAWN			DATE	
MATERIAL .063 THICK				
ALUMINUM 5052-H32				
FINISH S404				
YEL IRIDITE				
S401-451				
SIZE	CODE IDENT. NO.	DWG NO.	ISSUE	
A	82679	MS5285	Ø	
SCALE	1/1	SHEET	1	OF 1



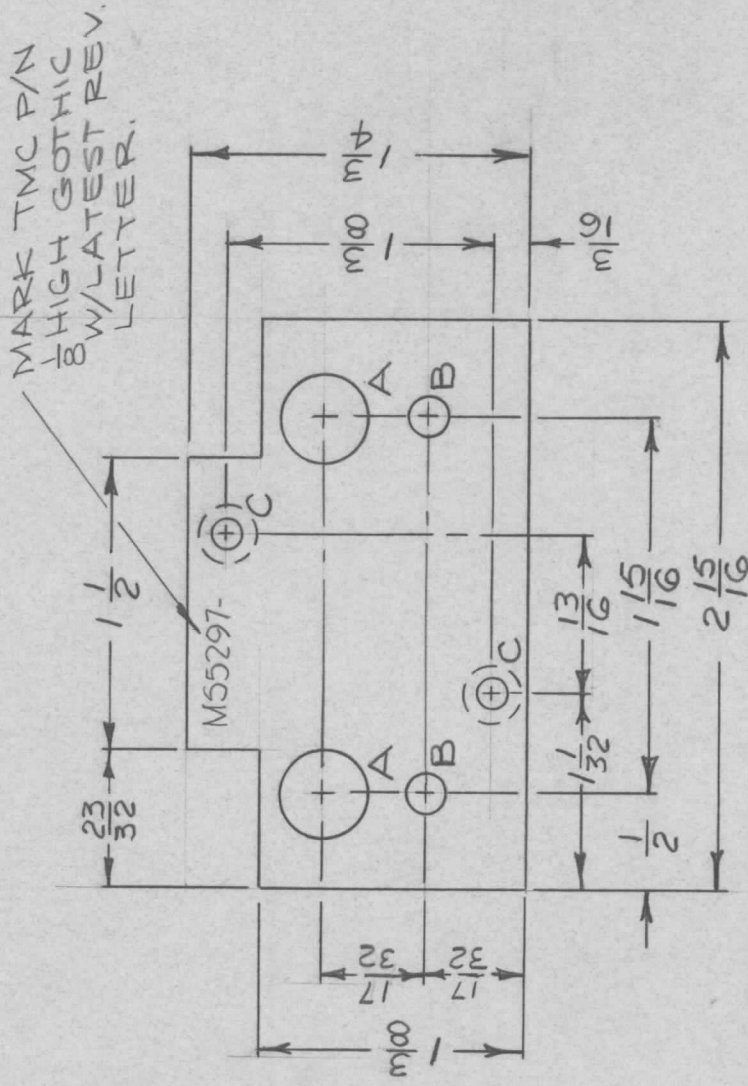
APPLICATION

QTY	MODEL USED ON	ASSY NO.	LTR
1	HFRR-4		X

REVISIONS

DESCRIPTION	DATE	E.M.N.NO	DRAFT	CHKD	APPD
EXP. RELEASE	1-18-68		R.G.		
ORIG. RELEASE FOR PROD.	11-6-68	Ø			

HOLE	DESCR	REQ'D
A	7/16 DIA	2
B	3/16 DIA	2
C	.144 DIA. CSINK 82° TO .284 DIA. FROM REAR	2



UNLESS OTHERWISE SPECIFIED  
DIMENSIONS ARE IN INCHES  
AND INCLUDE CHEMICALLY APPLIED  
OR PLATED FINISHES

DECIMALS  
.X ± .05  
.XX ± .01  
.XXX ± .005

FRACTIONS  
1/64  
ANGLES  
0° - 30'

MATERIAL .063 THK  
ALUM. 5052 H-32

FINISH S404  
YEL. IRIDITE  
S401-451

REQ'D ITEM

HOGAN

FINAL APPROVAL

DATE 1/18/68  
M. ZEJENA

MECH. DES.

ELECT. DES.

CHECKED

DATE 1-18-67  
DRAWN S.G.  
J. Pacheco

DESCRIPTION

LIST OF MATERIAL SK3252-003-55 X2

THE TECHNICAL MATERIEL CORP.

MAMARONECK, NEW YORK

BRACKET, MTG CABLE CLAMP  
CLAMP

NOTICE TO PERSONS RECEIVING THIS DRAWING

THE TECHNICAL MATERIEL CORPORATION claims proprietary right in the material disclosed hereon. This drawing is issued in confidence for engineering information only and may not be reproduced or used to manufacture anything shown hereon without permission from THE TECHNICAL MATERIEL CORPORATION to the user. This drawing is loaned for mutual assistance and is subject to recall at any time.

SIZE

A

CODE IDENT. NO.

82679

DWG NO.

MS 5297

ISSUE

Ø

SCALE 1:1

SHEET

OF

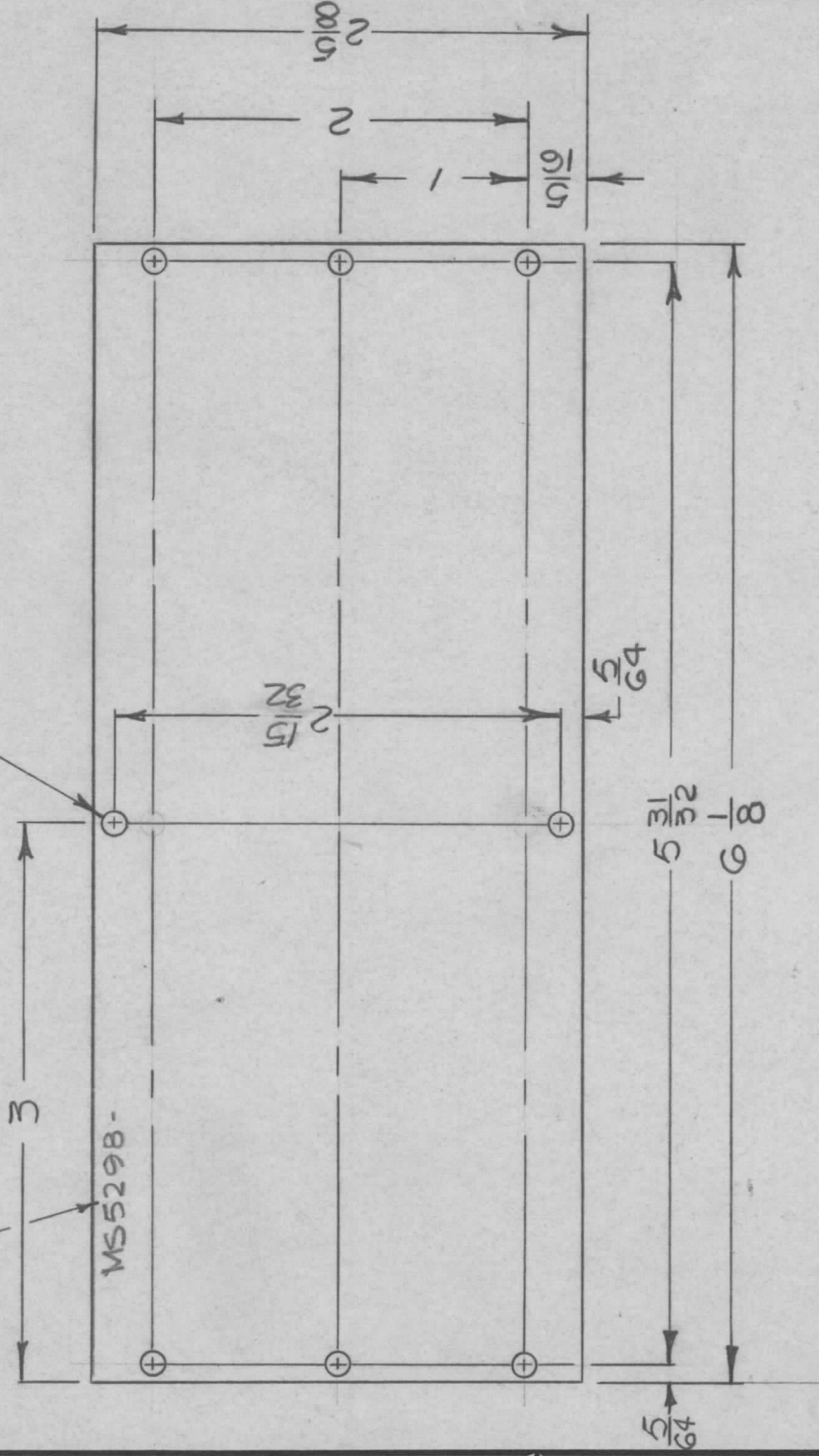
REVISIONS

APPLICATION

QTY	MODEL USED ON	ASS'Y NO.	LTR	DESCRIPTION	DATE	E.M.N.NO	DRAFT	CHKD	APPD
1	HFRR-4	A0128	X3	EXP RELEASE	118-68				
			X1	QTY WAS (1)	5/14/68	X1			
			Ø	ORIG. RELEASE FOR PROD.		Ø	R.G.		
			A	MATL. THK. .064 WAS .032	2/28/69	19347	GE		
			B	MATL. THK. WAS .064	12/9/69	19681			

MARK TMC P/N  
8 HIGH GOTHIC  
W/LATEST REV.  
LETTER

7/64 DIA. (8 REQ'D)



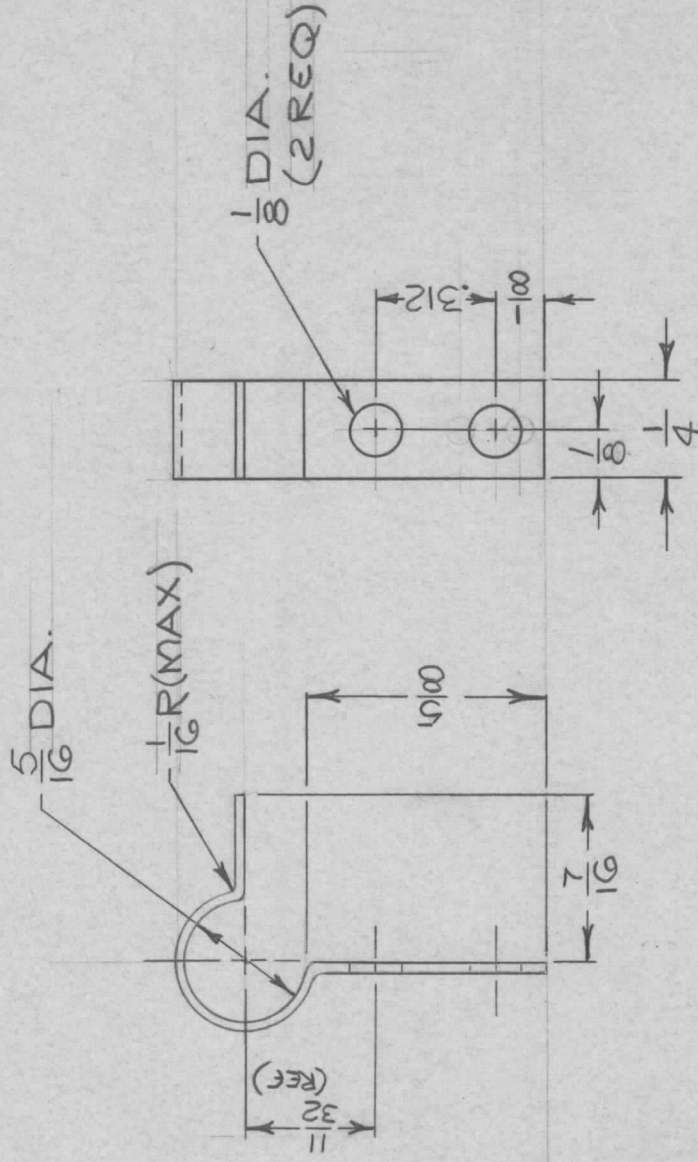
REQ'D ITEM	PART NUMBER	DESCRIPTION	SYM.
HOGAN		LIST OF MATERIALS K3252-003-29	
FINAL APPROVAL	DATE		
M. ZEJENA	11/1/68		
MECH. DES.	DATE		
ELECT. DES.	DATE		
CHECKED	DATE		
DRAWN	DATE		
<p>THE TECHNICAL MATERIEL CORP. MAMARONECK, NEW YORK</p> <p>PLATE, SIDE OSC (RIGHT)</p>			
SIZE	CODE IDENT. NO.	DWG NO.	ISSUE
A	82679	MS5298	B
SCALE	1:1	SHEET	OF

NOTICE TO PERSONS RECEIVING THIS DRAWING  
THE TECHNICAL MATERIEL CORPORATION claims proprietary right in the material disclosed hereon. This drawing is issued in confidence for engineering information only and may not be reproduced or used to manufacture anything shown hereon without permission from THE TECHNICAL MATERIEL CORPORATION to the user. This drawing is loaned for mutual assistance and is subject to recall at any time.

APPLICATION

QTY	MODEL USED ON	ASS'Y NO.	LTR	DESCRIPTION	DATE	E.M.N.NO	DRAFT	CHKD	APPD
2	HERR-4		X	EXP. RELEASE	1-19-68				
			Ø	ORIG. RELEASE FOR PROD.		Ø	R.G.		Hide

REVISIONS



MAT'L  
 .015 THK. SPRING PHOS. BRONZE  
 HEAT TREAT 600°F FOR 4 HOURS

UNLESS OTHERWISE SPECIFIED DIMENSIONS ARE IN INCHES AND INCLUDE CHEMICALLY APPLIED OR PLATED FINISHES	REQ'D ITEM	PART NUMBER	DESCRIPTION	SYM.
DECIMALS .X ± .05 .XX ± .01 .XXX ± .005	HOGAN		LIST OF MATERIAL SK 3252-003-4G X	
FRACTIONS 1/64	FINAL APPROVAL <i>[Signature]</i>		THE TECHNICAL MATERIEL CORP. MAMARONECK, NEW YORK	
TOLS. ANGLES 0°-30°	MECH. DES. M. ZEJENA	DATE 11/1/68		
MATERIAL AS NOTED	ELECT. DES.	DATE		
FINISH NATURAL	CHECKED SG	DATE 1-20-68	SPRING, LIMIT SWITCH, ACTUATING	
S401-451	DRAWN <i>[Signature]</i>	DATE 1-19-68		

NOTICE TO PERSONS RECEIVING THIS DRAWING	SIZE	CODE IDENT. NO.	DWG NO.	ISSUE
THE TECHNICAL MATERIEL CORPORATION claims proprietary right in the material disclosed hereon. This drawing is issued in confidence for engineering information only and may not be reproduced or used to manufacture anything shown hereon without permission from THE TECHNICAL MATERIEL CORPORATION to the user. This drawing is loaned for mutual assistance and is subject to recall at any time.	A	82679	MS 5299	Ø
	SCALE 2:1		SHEET	OF