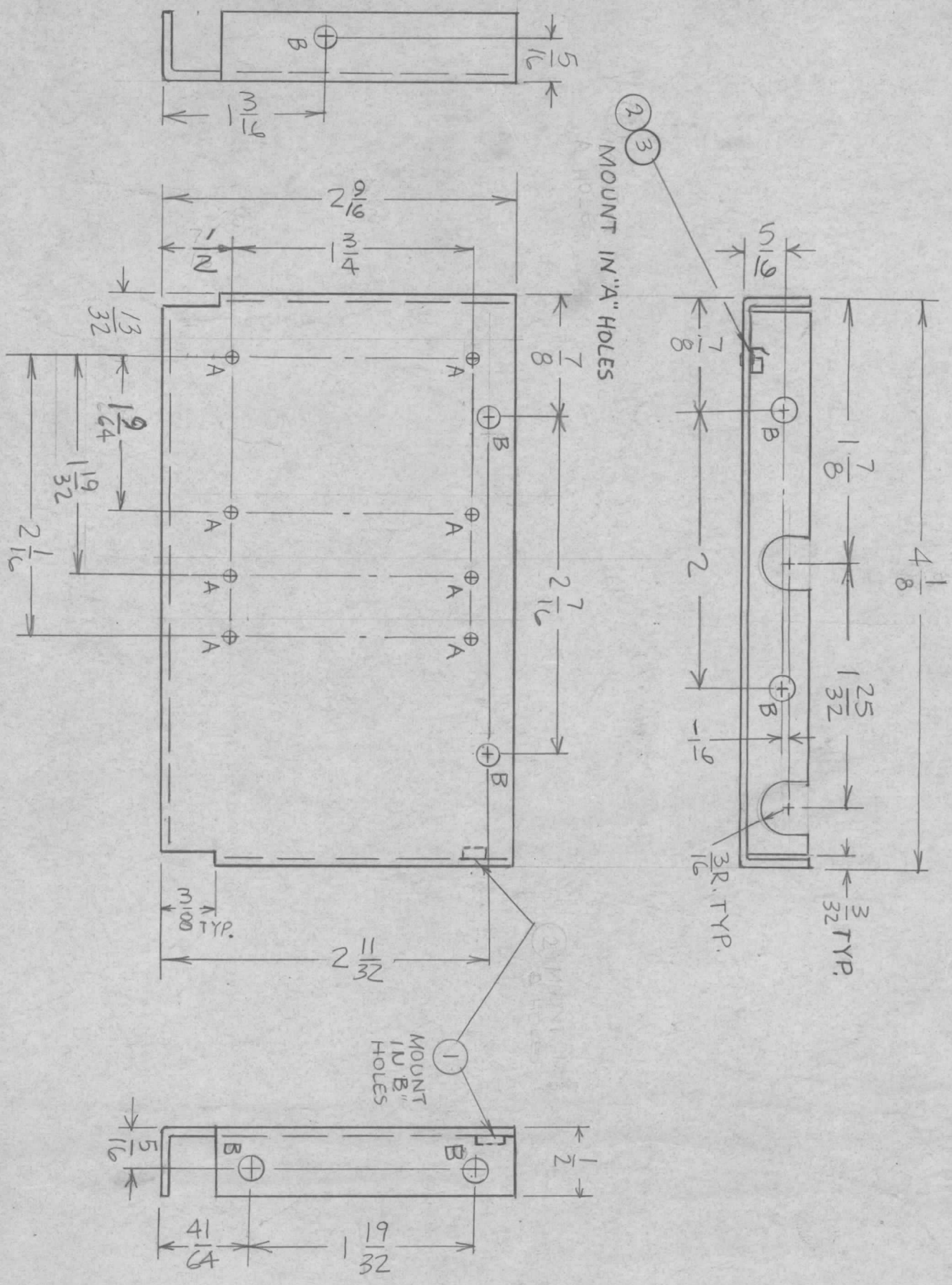


REVISIONS						
ZONE	LTR	DESCRIPTION	DATE	E.M.N. NO	DRAFT	CHKD
X1		"A" HOLE 1/2" Loc. DIM WAS 7/8	12/26/67		JL	
X2		2-9/16 WAS 2-17/32	2.15.68		MS	
Ø		ORIG. RELEASE FOR PROD	11-7-68	Ø	R.G.	



HOLE	DESCRIPTION	REQ
A	.067 DIA.	8
B	.191-.194 DIA	7

REQ'D ITEM	PART NUMBER	DESCRIPTION	SYM.
8	3	EYELET MTL	A
4	2	GU157-2	A
7	1	NT129-632-4	B

HOGAN (ZETENA) LIST OF MATERIAL SK 3252-003-42
 FINAL APPROVAL: *[Signature]* DATE: 11/7/68
 MECH. DES. *[Signature]* DATE: 11/7/68
 ELECT. DES. *[Signature]* DATE: 11/7/68
 CHECKED: *[Signature]* DATE: 2/15/68
 DRAWN: *[Signature]* DATE: 12/22/67

THE TECHNICAL MATERIEL CORP.
 MAMARONECK, NEW YORK
 SIZE B
 CODE IDENT. NO. 82679
 DWG NO. MS529212
 SCALE OF SHEET OF ISSUE

QTY / UNIT	1	MODEL USED ON	HFRR-4	ASSY NO.	
APPLICATION					
CODE	A	CODE	S401-4S1		

- UNLESS OTHERWISE SPECIFIED:
1. USE MATERIAL THICKNESS FOR MAXIMUM RADIUS ON ALL BENDS
 2. ALL ANGULAR BENDS 90 DEGREES
 3. REMOVE ALL BURRS AND SHARP EDGES
 4. MOUNT INSERTS AFTER FINISHING

NOTICE TO PERSONS RECEIVING THIS DRAWING
 THE TECHNICAL MATERIEL CORPORATION claims proprietary right in the material disclosed hereon. This drawing is issued in confidence for engineering information only and may not be reproduced or used to manufacture anything shown hereon without permission from THE TECHNICAL MATERIEL CORPORATION to the user. This drawing is loaned for mutual assistance and is subject to recall at any time.