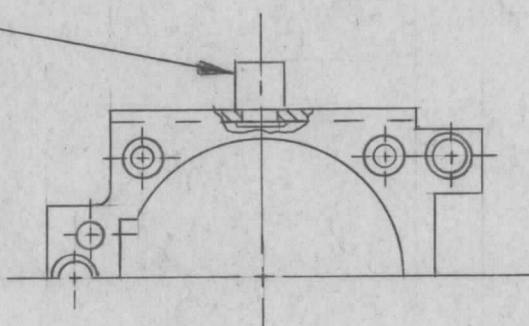


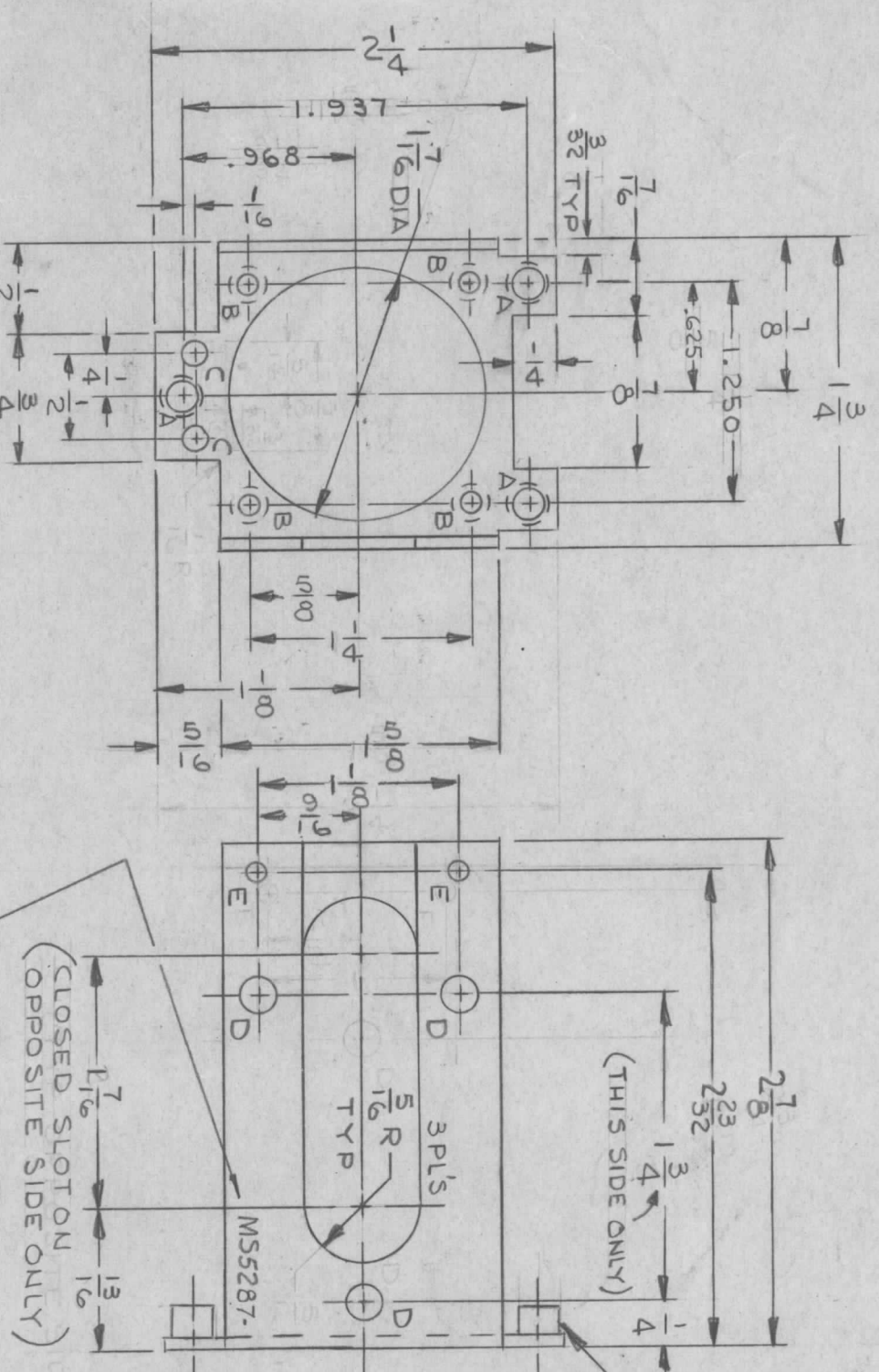
REVISIONS						
ZONE	LTR	DESCRIPTION	DATE	E.M.N. NO	DRAFT	CHKD
X		EXP. RELEASE	7/19/67	-	JL	
Ø		ORIG. RELEASE FOR PROD	11-7-68	Ø	R.G.	
A		REVISED & UPDATED	2/8/69	19289	GE	

(MOUNT IN "A" HOLES)
 MOUNT AS SHOWN IN "A" HOLES
 AMATON PT. NO. 6251A-SS-0032



1 MOUNT IN "D" HOLES (THIS SIDE)

MARK TMC P/N 1/8 HIGH GOTHIC W/LATEST REV. LETTER



PART NUMBER	A	B	C	D	E
1	2 1/8	1 1/8	1 7/16	1 1/8	1 1/8
2	3/8	1/2	1 1/8	1 1/8	1 1/8

- UNLESS OTHERWISE SPECIFIED:
1. USE MATERIAL THICKNESS FOR MAXIMUM RADIUS ON ALL BENDS
 2. ALL ANGULAR BENDS 90 DEGREES
 3. REMOVE ALL BURRS AND SHARP EDGES
 4. MOUNT INSERTS AFTER FINISHING

HOLE	DESCRIPTION	REQ
A	.191 ⁺ ±.003 DIA (FAS) B2° TO .250 DIA (FAS)	3
B	.120 DIA & C'SINK 82° TO .230 DIA (FAR SIDE)	4
C	1/8 DIA	2
D	.189 DIA	3
E	9/64 DIA	4

UNLESS OTHERWISE SPECIFIED DIMENSIONS ARE IN INCHES AND INCLUDE CHEMICALLY APPLIED OR PLATED FINISHES

DECIMALS	FRACTIONS
.X ± .05	1/64
.XX ± .01	TOLS. ANGLES
.XXX ± .005	0°-30'

1	HFRR-4	
5	MSAR-4	
MODEL USED ON		ASS'Y NO.
APPLICATION		
CODE		S401-451

NOTICE TO PERSONS RECEIVING THIS DRAWING
 THE TECHNICAL MATERIEL CORPORATION claims proprietary right in the material disclosed hereon. This drawing is issued in confidence for engineering information only and may not be reproduced or used to manufacture anything shown hereon without permission from THE TECHNICAL MATERIEL CORPORATION to the user. This drawing is loaned for mutual assistance and is subject to recall at any time.

REQ'D ITEM	PART NUMBER	DESCRIPTION	SYM.
3	NT 156-1	RETAINER, PNL, SCR.	
3	SC168-1	SCREW PANEL, CAPTIVE	
3	TE108-1	STANDOFF, RIVET TYPE	D

LIST OF MATERIAL SK 3252-003-9
THE TECHNICAL MATERIEL CORP.
 MAMARONECK, NEW YORK
CHASSIS, LEDEX MTG.

SIZE	CODE IDENT. NO.	DWG NO.	ISSUE
B	82679	MS 5287	A

SCALE 1/1
 SHEET OF