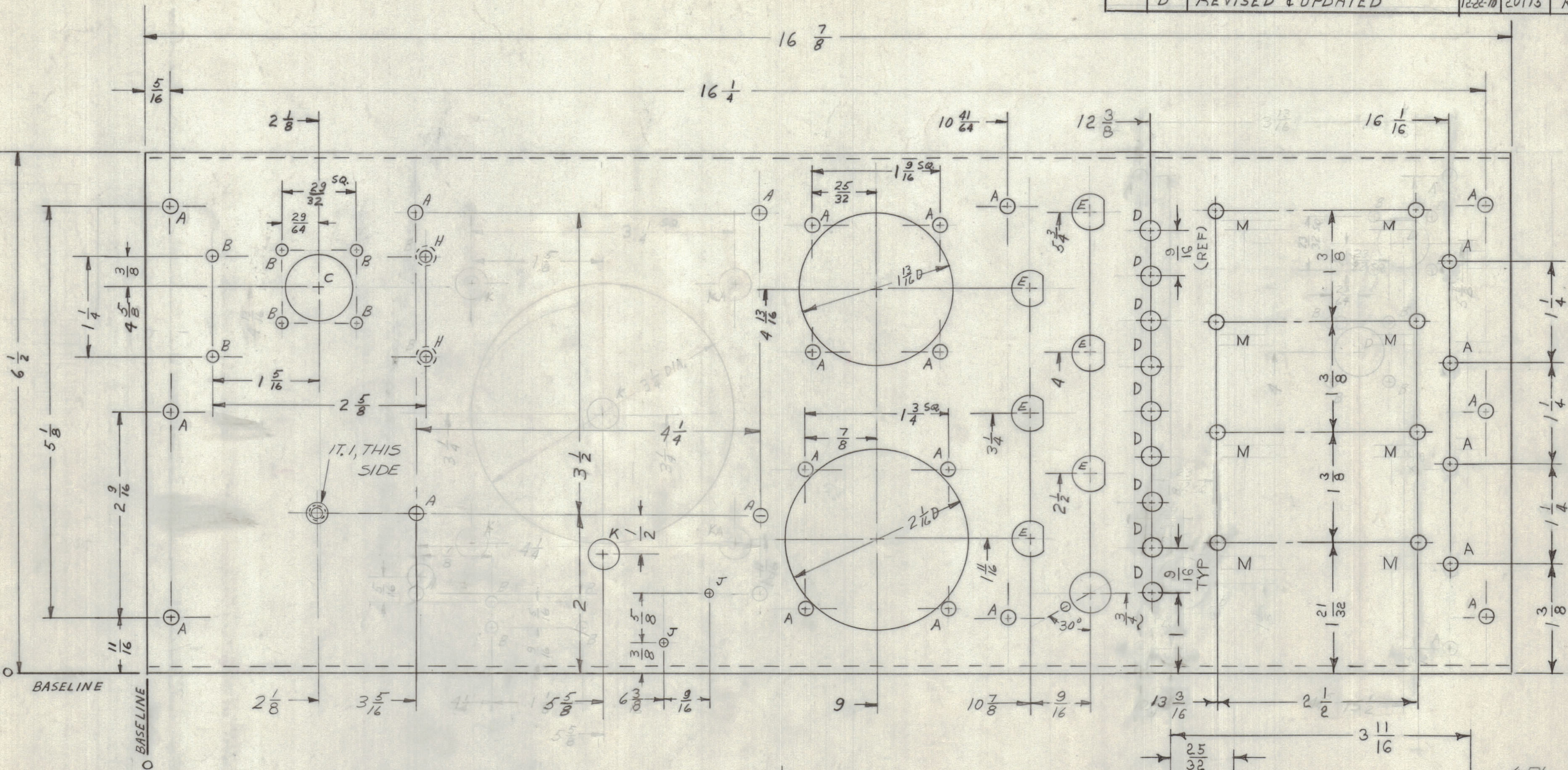
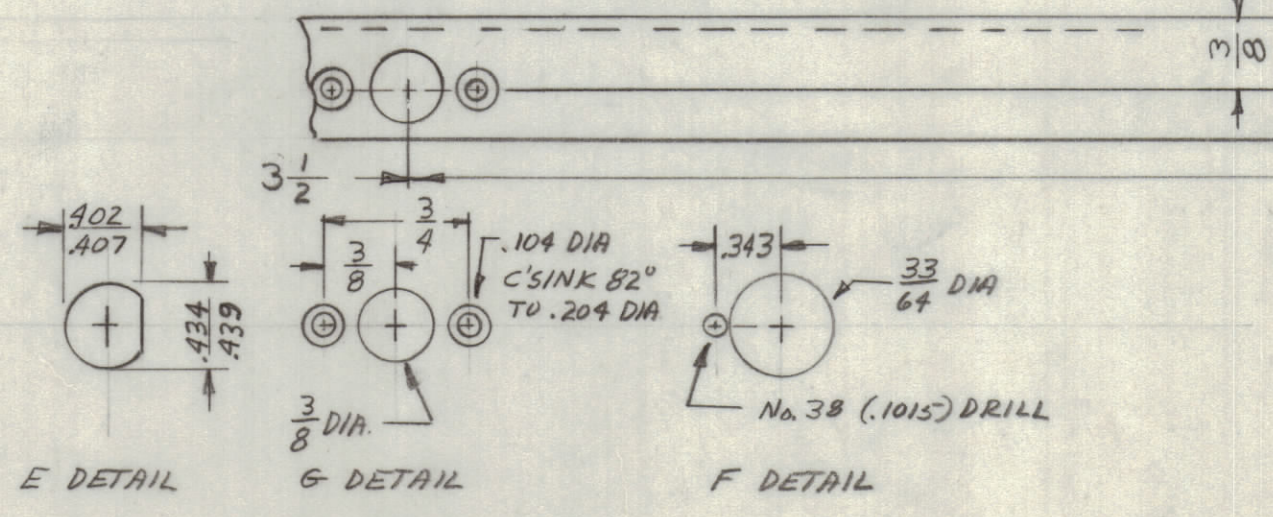


REVISIONS						
ZONE	LTR	DESCRIPTION	DATE	E.M.N.NO	DRAFT	CHKD APPD
	A	RE-DRAWN & REVISED	3.13.69	10363	HG	JG GP
	B	REV. COMP.	8-15-69	19386	JM	JM GP
	C	IT, I, AND 'L' HOLE ADDED	5/2/69	19421	GE	JG GP
	D	REVISED & UPDATED	12-22-70	20175	RJ	JG GP



HOLE LEGEND		
HOLE	DESCRIPTION	REQ
A	11/64 DIA	24
B	9/64 DIA	6
C	13/16 DIA	1
D	15/64 DIA.	9
E	SEE DETAIL	6
F	SEE DETAIL	1
G	SEE DETAIL	4
H	.120 DIA, CSK 82° TO .230 DIA.	2
J	3/32 DIA	2
K	3/8 DIA	1
L	.250, .253 DIA	1
M	3/16 DIA	8
N	.144 DIA, 82° X .284 DIA, C'SINK	4



1	HFRR-4	BMA 294
QTY / UNIT	MODEL USED ON	ASS'Y NO.
APPLICATION		
CODE	A 5401-451	

NOTICE TO PERSONS RECEIVING THIS DRAWING
 THE TECHNICAL MATERIEL CORPORATION claims proprietary right in the material disclosed hereon. This drawing is issued in confidence for engineering information only and may not be reproduced or used to manufacture anything shown hereon without permission from THE TECHNICAL MATERIEL CORPORATION to the user. This drawing is loaned for mutual assistance and is subject to recall at any time.

OPP. SIDE IDENTICAL

REF: LD 2274

UNLESS OTHERWISE SPECIFIED DIMENSIONS ARE IN INCHES AND INCLUDE CHEMICALLY APPLIED OR PLATED FINISHES	
TOLERANCES ON	
DECIMALS	FRACTIONS
.X ± .05	± 1/64
.XX ± .01	ANGLES
.XXX ± .005	± 0° -30'
MATERIAL	.081 THK ALUM. 5052-H32
FINISH	5404 YEL IRID

1	1	NT/29-1032-4	NUT PLAIN SPLINE			
QTY. REQ.	ITEM	PART NO.	DESCRIPTION	SYMBOL		
POSE	LIST OF MATERIAL SK3252-003-7					
FINAL APPROVAL	DATE		THE TECHNICAL MATERIEL CORP. MAMARONECK, NEW YORK PLATE, REAR			
M.ECH. DES.	DATE					
ELECT. DES.	DATE					
CHECKED	DATE					
DRAWN	DATE		SIZE	CODE IDENT. NO.	DWG. NO.	ISSUE
			C	82679	MS5278	D
SCALE 1:1			SHEET		OF	

MS5278