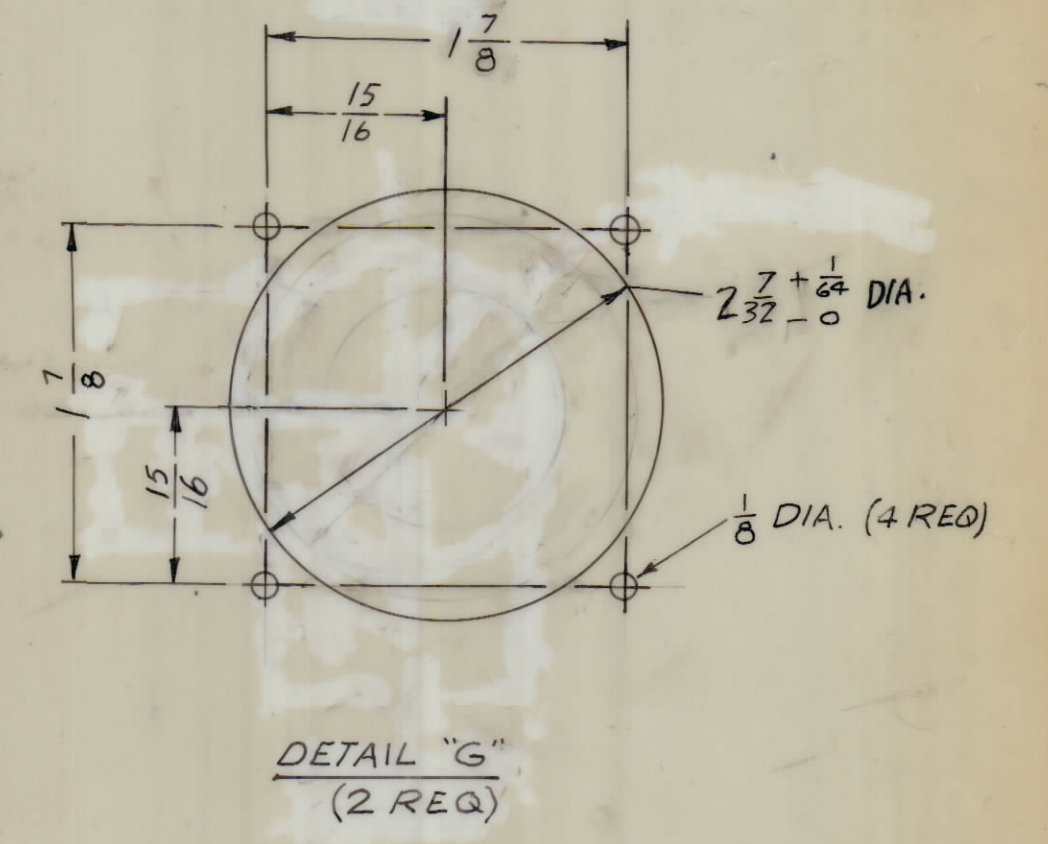
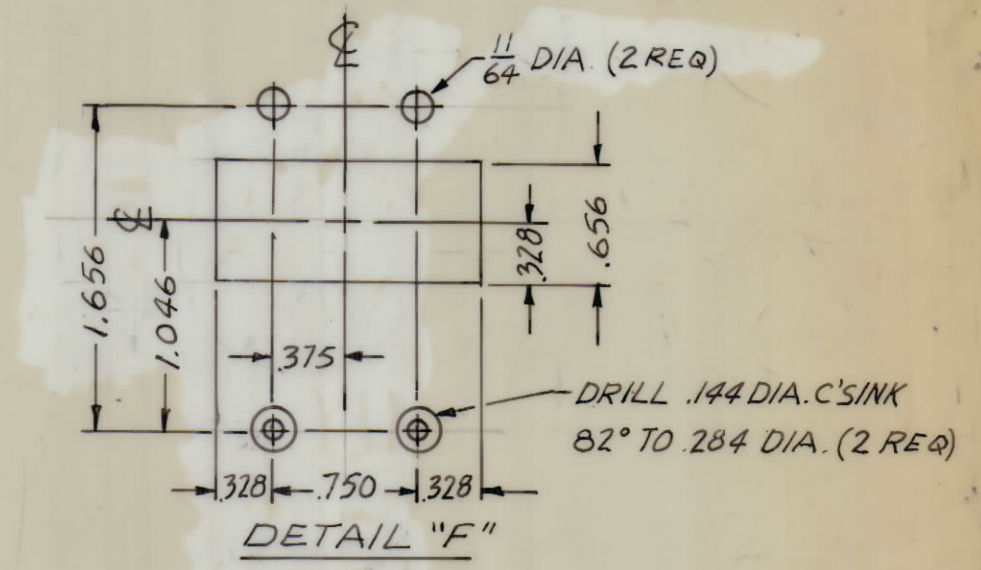
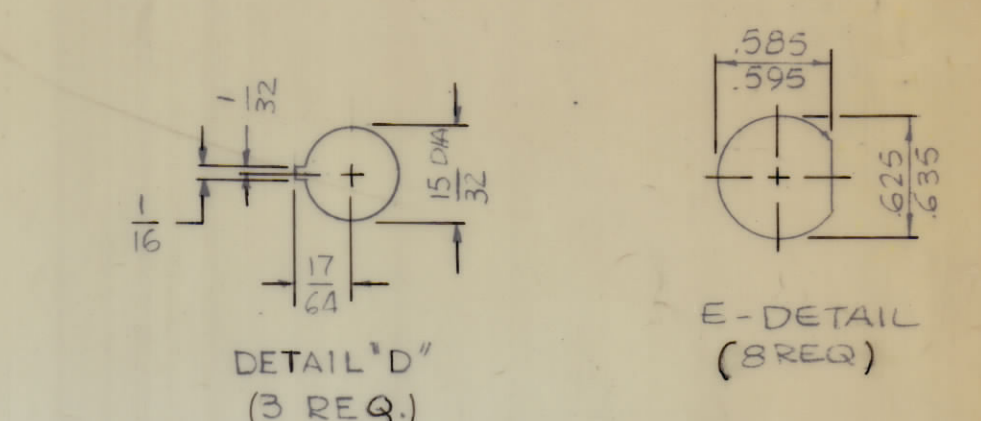
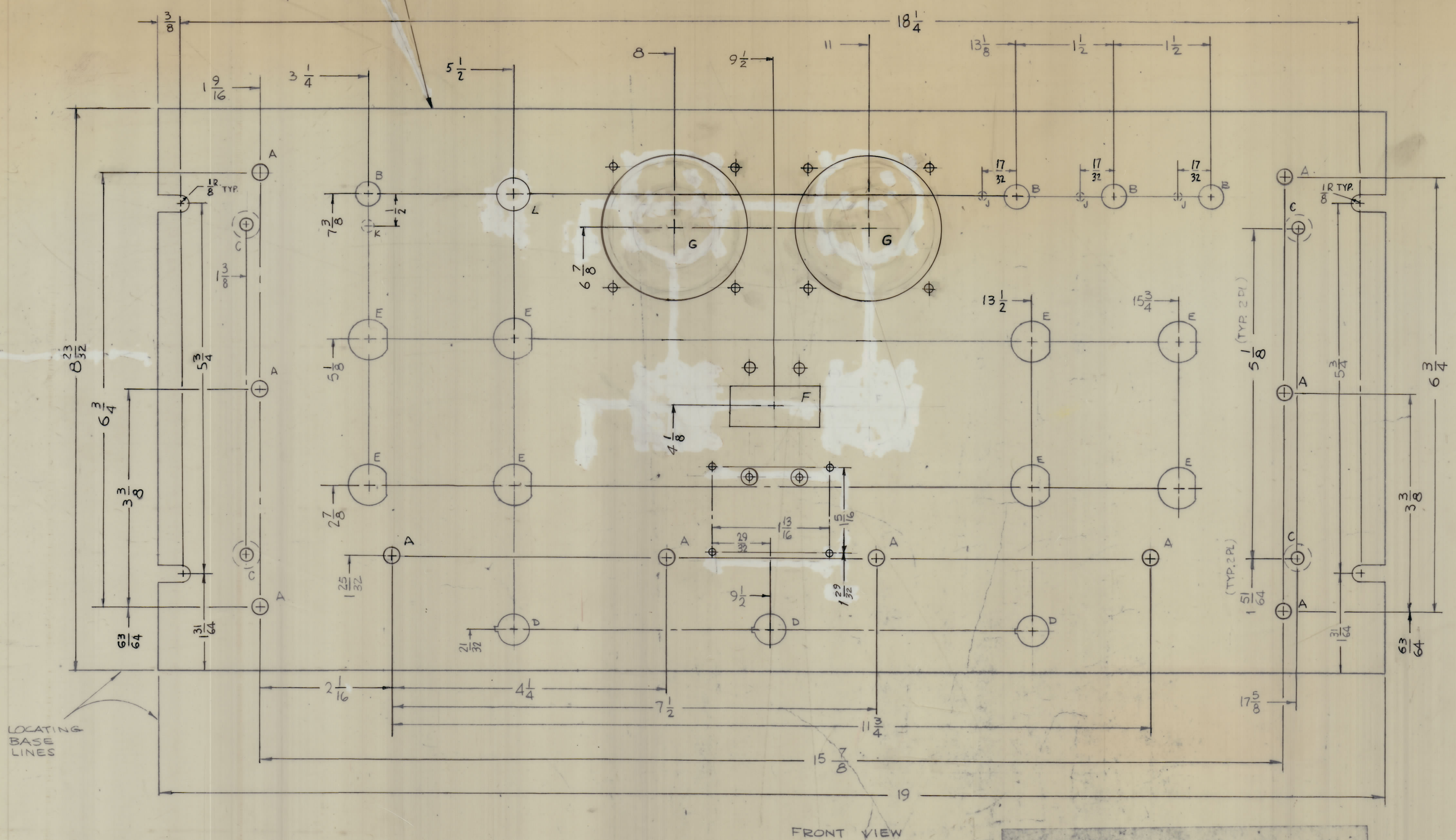


REVISIONS									
ZONE	SYM	DESCRIPTION	DATE	EM. NO.	DRAFT	CHKD	APPD		
X		EXP. RELEASE	1.31.68						
		ORIGINAL RELEASE FOR PRODUCTION	2.4.68						

HOLE	DESCRIPTION	REQ
A	15/64 DIA.	10
B	3/8 DIA.	4
C	.196 DIA C'SINK 82° TO .390 DIA.	4
D	SEE DETAIL	3
E	SEE DETAIL	8
F	SEE DETAIL	1
G	SEE DETAIL	2
H	076 DIA.	4
J	1/8 DIA X 1/16 DEEP (FROM REAR)	3
K	3/16 DIA X 1/16 DEEP (FROM REAR)	1
L	1/2 DIA.	1



METAL STAMP TMC P/NO (M55276) 1/8" HIGH
GOTHIC W/LATEST REV. LETTER
ON REAR



MACHINING:

- MILL ALL EDGES.
- HOLES MUST BE DRILLED, UNLESS OTHERWISE SPECIFIED.
- LATERAL BOW OF PANEL MUST BE KEPT TO .031 TOLERANCE
- PANEL MUST BE FREE OF ALL MACHINING MARKS, GOGGES AND SCRATCHES. IF NECESSARY, SAND FRONT OF PANEL WITH NO. 120 GRIT SANDPAPER.

FINISH NOTES:

- S404 - IRIDITE 14-2 AL-COAT.
- S114 - ZINC CHROMATE PRIMER FRONT AND
- S115 - SMOOTH GRAY ENAMEL EDGES ONLY

NOTES

1	AP.128A	A5257
QTY./UNIT	MODEL USED ON	ASSY. NO.
SCALE	CODE	
1:1	A	S401-451

REF: LD 2272

REQ'D	ITEM	PART NUMBER	DESCRIPTION	SYMBOL
F. BUDETTI LIST OF MATERIAL				
MATERIAL		3/16 THK. ALUMINUM	THE TECHNICAL MATERIEL CORP.	
FINISH		2024 - T3	MAMARONECK, NEW YORK	
SEE NOTES		TITLE		
		PANEL, FRONT		
UNLESS OTHERWISE SPECIFIED DIMENSIONS ARE IN INCHES AND INCLUDE CHEMICALLY APPLIED OR PLATED FINISHES		DRAWN	DATE	FINAL APPROVAL
TOLERANCES		DATE	DATE	DATE
DECIMALS ± .005		DATE	DATE	DATE
FRACTIONS ± 1/64		DATE	DATE	DATE
ANGLES ± .01		DATE	DATE	DATE
MECH. DEG. ± .002		DATE	DATE	DATE

THE CONTENTS OF THIS DRAWING ARE THE EXCLUSIVE PROPERTY OF THE TECHNICAL MATERIEL CORP. ITS UNAUTHORIZED USE OR REPRODUCTION IN WHOLE OR IN PART IS STRICTLY FORBIDDEN.

REVISIONS

NO.	DATE	BY	DESCRIPTION
1	1.31.68		
2	2.4.68		

MS5276

REPROVAL NO. 4408