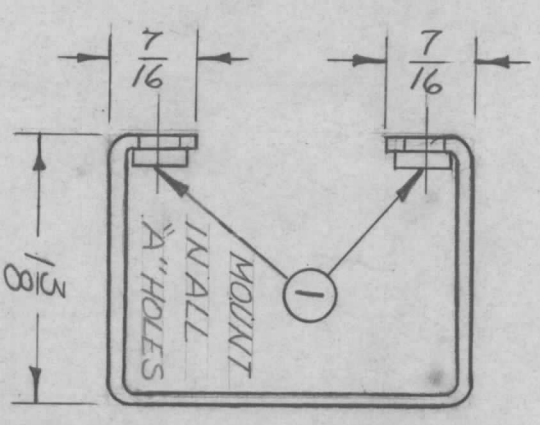
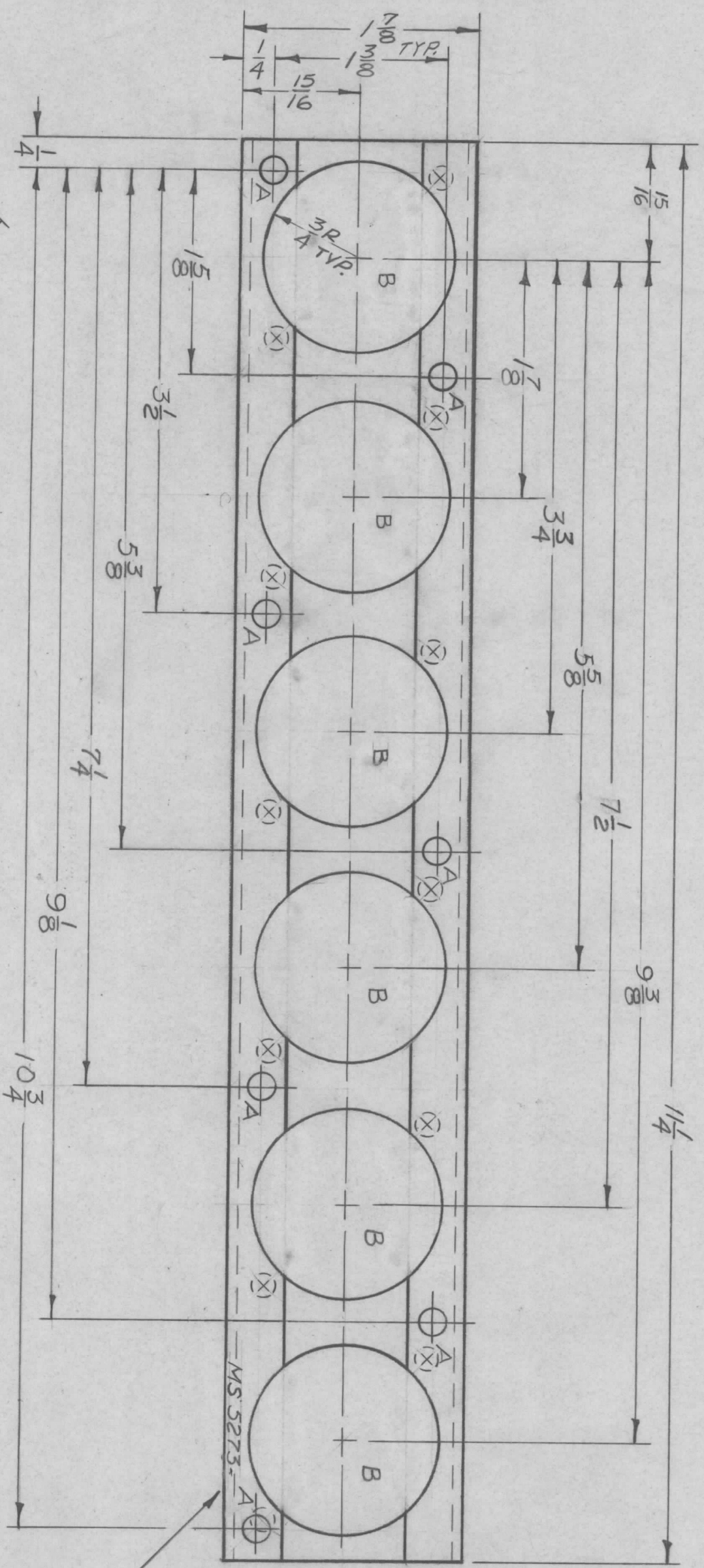


HOLE	DESCRIPTION	REQ.
A	.191 - .194 DIA.	7
B	SEE DETAIL	6

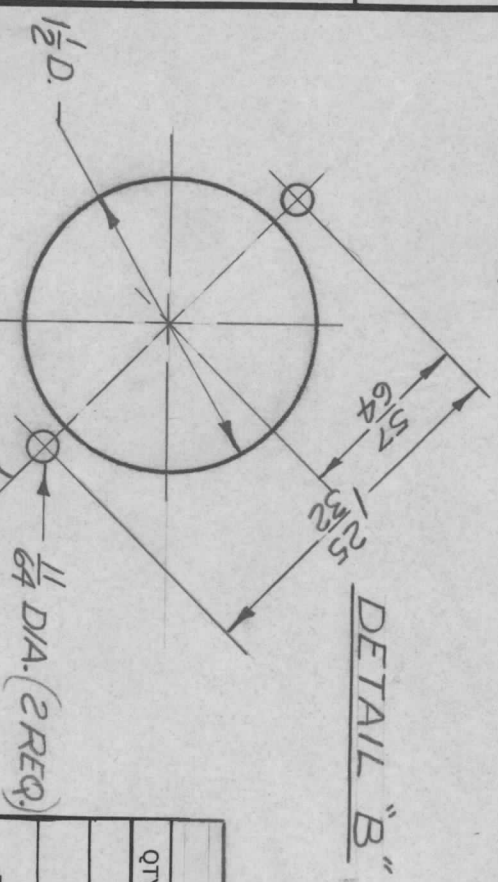
UNLESS OTHERWISE SPECIFIED:

1. USE MATERIAL THICKNESS FOR MAXIMUM RADIUS ON ALL BENDS
2. ALL ANGULAR BENDS 90 DEGREES
3. REMOVE ALL BURRS AND SHARP EDGES
4. MOUNT INSERTS AFTER FINISHING

REVISIONS		DESCRIPTION	DATE	E.M.N. NO.	DRAFT	CHKD	APPD
X		EXP. RELEASE	12/20/67	-	Enf	MS 5273	
X1		3/4 RAD. ADDED TO LIPS	2/1/68	-	Enf	MS 5273	
Ø		ORIG. RELEASE FOR PROD	11-20-68	Ø	Enf	MS 5273	



MARK TMC P/N 1/8 HIGH
GOTHIC W/LATEST REV.
LETTER.



QTY / UNIT	MODEL USED ON	ASSY NO.
1	RTD-4	
APPLICATION		
CODE	S 401 - 451	

DECIMALS	FRACTIONS
.X ± .05	1/64
.XX ± .01	ANGLES
.XXX ± .005	0° - 30'

UNLESS OTHERWISE SPECIFIED
DIMENSIONS ARE IN INCHES
AND INCLUDE CHEMICALLY APPLIED
OR PLATED FINISHES

MATERIAL
064 ALUMINUM
5052-H32

FINISH S 404
YELLOW IRIDITE

REQ'D ITEM	PART NUMBER	DESCRIPTION	SYM.
7	NT129-632-4	NUT, PLAIN SPLINE	A

LIST OF MATERIAL

THE TECHNICAL MATERIEL CORP.
MAMARONECK, NEW YORK

CHASSIS, MTG CAP.

FINAL APPROVAL	DATE	SIZE	CODE IDENT. NO.	DWG NO.	ISSUE
<i>O. POSE</i>	11/19/68	B	82679	MS 5273	Ø
CHECKED	DATE	SCALE			
<i>Enf</i>	2/1/68	1:1			
DRAWN	DATE	SHEET	OF		
<i>Enf</i>	12/20/67				

NOTICE TO PERSONS RECEIVING THIS DRAWING
THE TECHNICAL MATERIEL CORPORATION claims proprietary right in the material
disclosed hereon. This drawing is issued in confidence for engineering information only
and may not be reproduced or used to manufacture anything shown hereon without
permission from THE TECHNICAL MATERIEL CORPORATION to the user. This drawing is
loaned for mutual assistance and is subject to recall at any time.