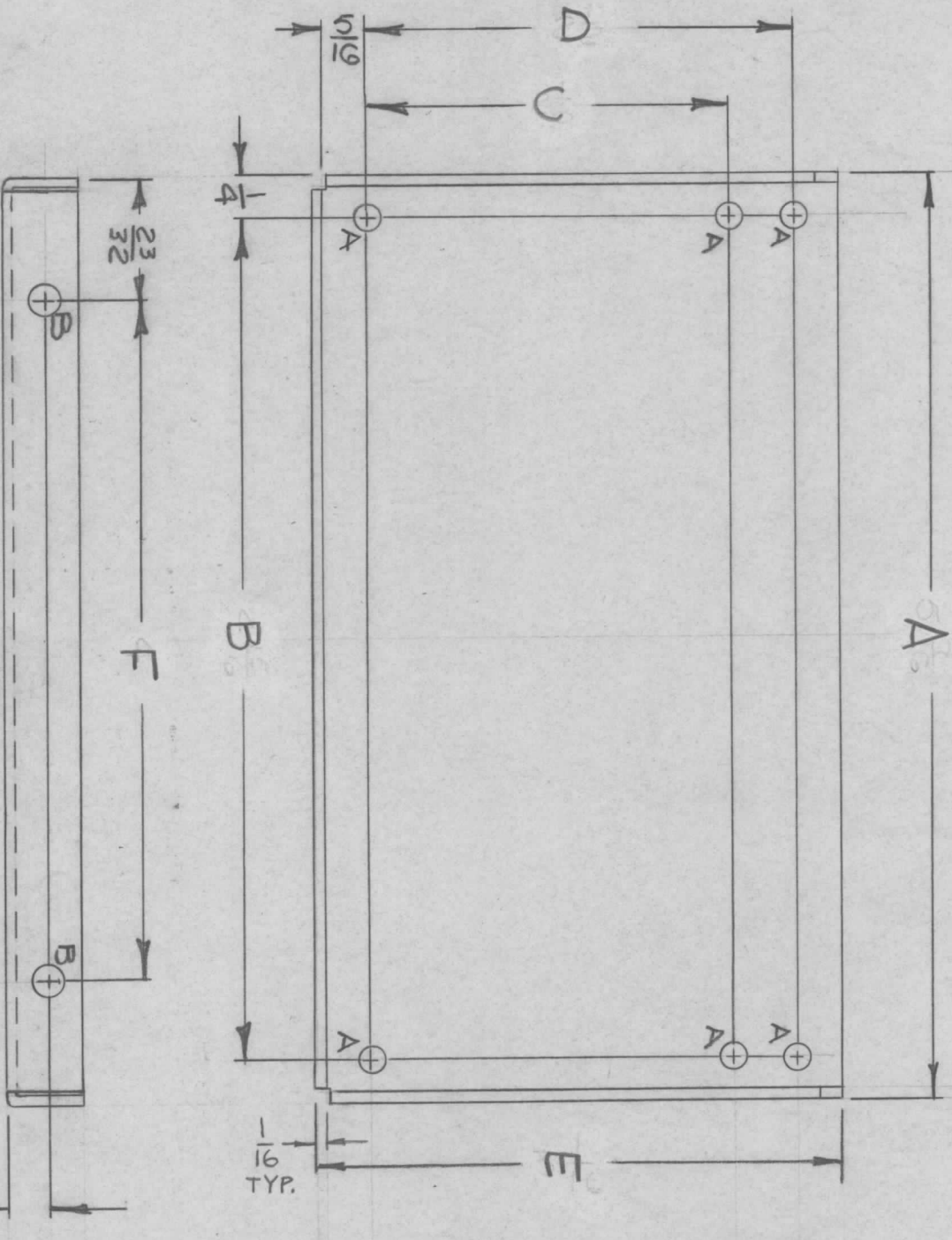


TMC P/N	A	B	C	D	E	F	USED	ON	REQ
MSS271-1	5 7/16	4 15/16	2 1/8	2 1/2	3 1/16	4	RTTD-4, RTTD-5	RTMU-4, RTPH-3	2 ea
MSS271-2	10 17/32	10 1/32	N/A	1 13/16	2 5/16	9 5/32	PARV-1, RAST-1		1 ea

REVISIONS		DESCRIPTION	DATE	E.M.N.NO	DRAFT	CHKD	APPD
X	LTR	EXP. RELEASE	10-23-67				
X1		RTTD-5 ADDED	2/27/68	#			
X2		STAND. CHART ADDED, -2 ADDED	11-1-68				
Ø		ORIG. RELEASE FOR PROD	11-20-68	Ø	R.G.		



HOLE	DIA	REQ
A	9/64	6
B	11/64	2

MARK TMC P/N 1/8 HIGH
GOTHIC W/LATEST
REVISION LETTER.

UNLESS OTHERWISE SPECIFIED:

- USE MATERIAL THICKNESS FOR MAXIMUM RADIUS ON ALL BENDS
- ALL ANGULAR BENDS 90 DEGREES
- REMOVE ALL BURRS AND SHARP EDGES

QTY / UNIT	MODEL USED ON	ASS'Y NO.
	APPLICATION	
	CODE	S401-451

DECIMALS	FRACTIONS
X ± .05	1/64
.XX ± .01	ANGLES
.XXX ± .005	0° - 30'

FINISH S404
ALUMINUM
SOSZ-H32
YEL. IRIDITE

REQ'D ITEM	PART NUMBER	DESCRIPTION	SYM.
EATON	SK 3253-001-14	LIST OF MATERIAL	

THE TECHNICAL MATERIEL CORP.
MAMARONECK, NEW YORK
PLATE, END, CARD BIN

DATE	DATE	DATE	DATE	DATE
11/19/68	11/19/68	11/19/68	11/19/68	11/19/68

SIZE	CODE IDENT. NO.	DWG NO.	ISSUE
B	82679	MSS 5271	Ø

SCALE 1:1 SHEET OF