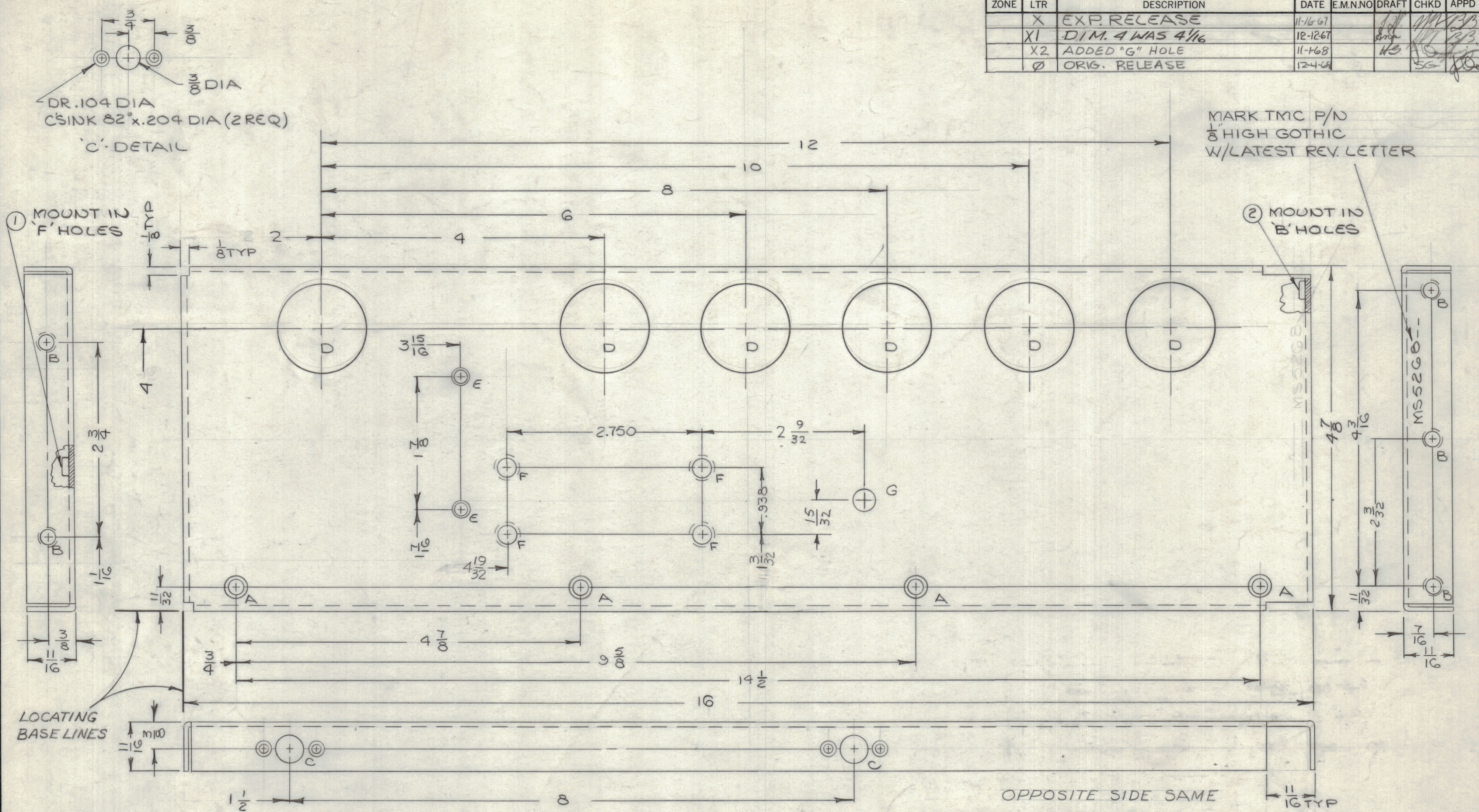


REVISIONS						
ZONE	LTR	DESCRIPTION	DATE	E.M.N.O	DRAFT	CHKD APPD
	X	EXP. RELEASE	11-16-67			
	X1	DIM. 4 WAS 4 1/16	12-12-67			
	X2	ADDED "G" HOLE	11-16-68			
	Ø	ORIG. RELEASE	12-4-68			



HOLE	DESCRIPTION	REQ'D
A	DR.169 DIA CSINK 82° TO .337 D.	4
B	.221-.224 DIA	5
C	SEE DETAIL	4
D	1/4 DIA	6
E	DR.144 DIA CSINK 82° TO .284	2
F	.250-.253 DIA	4
G	5/16 DIA.	1

MS5268-1	AS SHOWN, RIGHT SIDE
MS5268-2	DELETE 'D' HOLES, LEFT SIDE

QTY. REQ.	ITEM	PART NO.	DESCRIPTION	SYMBOL
5	2	NT129-832-4	NUT, PLAIN SPLINE	B
4	1	NT129-1032-4	NUT, PLAIN SPLINE	F

EATON		LIST OF MATERIAL SK3253-002-4	
FINAL APPROVAL	DATE	THE TECHNICAL MATERIEL CORP.	
<i>J. DeMarco</i>	12/13/68	MAMARONECK, NEW YORK	
MECH. DES.	DATE	PLATE, SIDE-RIGHT & LEFT	
ELECT. DES.	DATE		
CHECKED	DATE		
<i>SG</i>	12-12-67		
DRAWN	DATE		
<i>J. Wachsmay</i>	11-16-67		

SIZE	CODE IDENT. NO.	DWG NO.	ISSUE
C	82679	MS 5268-	Ø

TOLERANCES ON	
DECIMALS	FRACTIONS
.X ± .05	± 1/64
.XX ± .01	ANGLES
.XXX ± .005	± 0° -30'

QTY / UNIT	MODEL USED ON	ASS'Y NO.
1	RTIH-3	
APPLICATION		
CODE	S401-451	
A		

NOTICE TO PERSONS RECEIVING THIS DRAWING
 THE TECHNICAL MATERIEL CORPORATION claims proprietary right in the material disclosed hereon. This drawing is issued in confidence for engineering information only and may not be reproduced or used to manufacture anything shown hereon without permission from THE TECHNICAL MATERIEL CORPORATION to the user. This drawing is loaned for mutual assistance and is subject to recall at any time.

- UNLESS OTHERWISE SPECIFIED:
1. USE MATERIAL THICKNESS FOR MAXIMUM RADIUS ON ALL BENDS
 2. ALL ANGULAR BENDS 90 DEGREES
 3. REMOVE ALL BURRS AND SHARP EDGES
 4. MOUNT INSERTS AFTER FINISHING