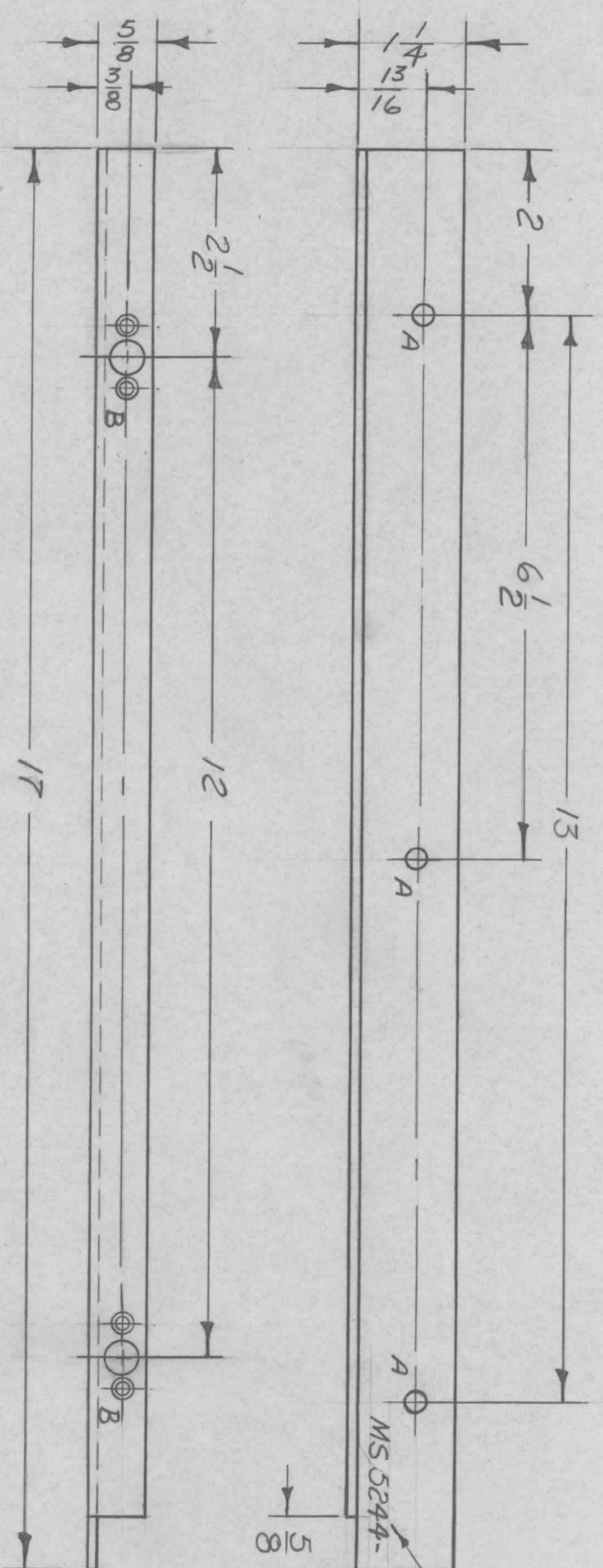
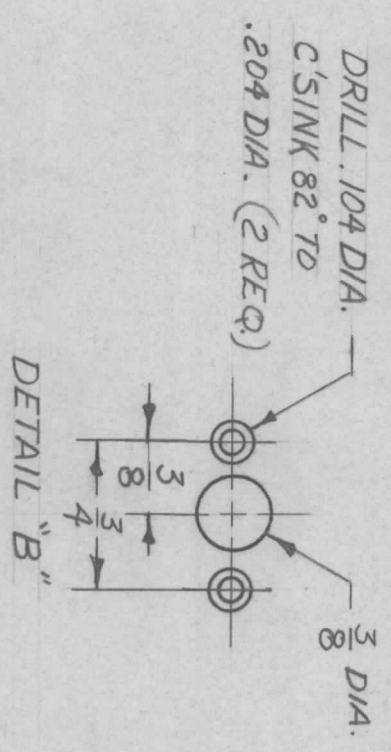


REVISIONS						
ZONE	LTR	DESCRIPTION	DATE	E.M.N.NO	DRAFT	CHKD
X		EXP. RELEASE	1/14/67		Engd	MS
Ø		ORIGINAL RELEASE FOR PRODUCTION	4/2/68		Hdr	MS



HOLE	DESCRIPTION	REQ.
A	13/64 DIA.	3
B	SEE DETAIL	2



REQ'D ITEM	PART NUMBER	DESCRIPTION	SYM.
F. BUDETTI		LIST OF MATERIAL SK 3290 - MS 5026	

FINAL APPROVAL		DATE
MECH. DES.	<i>[Signature]</i>	4-2-68
ELECT. DES.	<i>[Signature]</i>	

DRAWN *[Signature]* DATE 1/14/67
 CHECKED *[Signature]* DATE
 MATERIAL 081 THICK ALUMINUM 5052-H32
 FINISH S 404 YELLOWTRIDITE

QTY / UNIT	MODEL USED ON	ASS'Y NO.
1	BCT-10KA	AX 683

APPLICATION CODE A S 401 - 451

- UNLESS OTHERWISE SPECIFIED:
- USE MATERIAL THICKNESS FOR MAXIMUM RADIUS ON ALL BENDS
 - ALL ANGULAR BENDS 90 DEGREES
 - REMOVE ALL BURRS AND SHARP EDGES

NOTICE TO PERSONS RECEIVING THIS DRAWING
 THE TECHNICAL MATERIEL CORPORATION claims proprietary right in the material disclosed hereon. This drawing is issued in confidence for engineering information only and may not be reproduced or used to manufacture anything shown hereon without permission from THE TECHNICAL MATERIEL CORPORATION to the user. This drawing is loaned for mutual assistance and is subject to recall at any time.

THE TECHNICAL MATERIEL CORP.
 MAMARONECK, NEW YORK
 BRKT, MTG, CLIP

SIZE	CODE IDENT. NO.	DWG NO.	ISSUE
B	82679	MS 5244	Ø

SCALE 1:2 SHEET OF