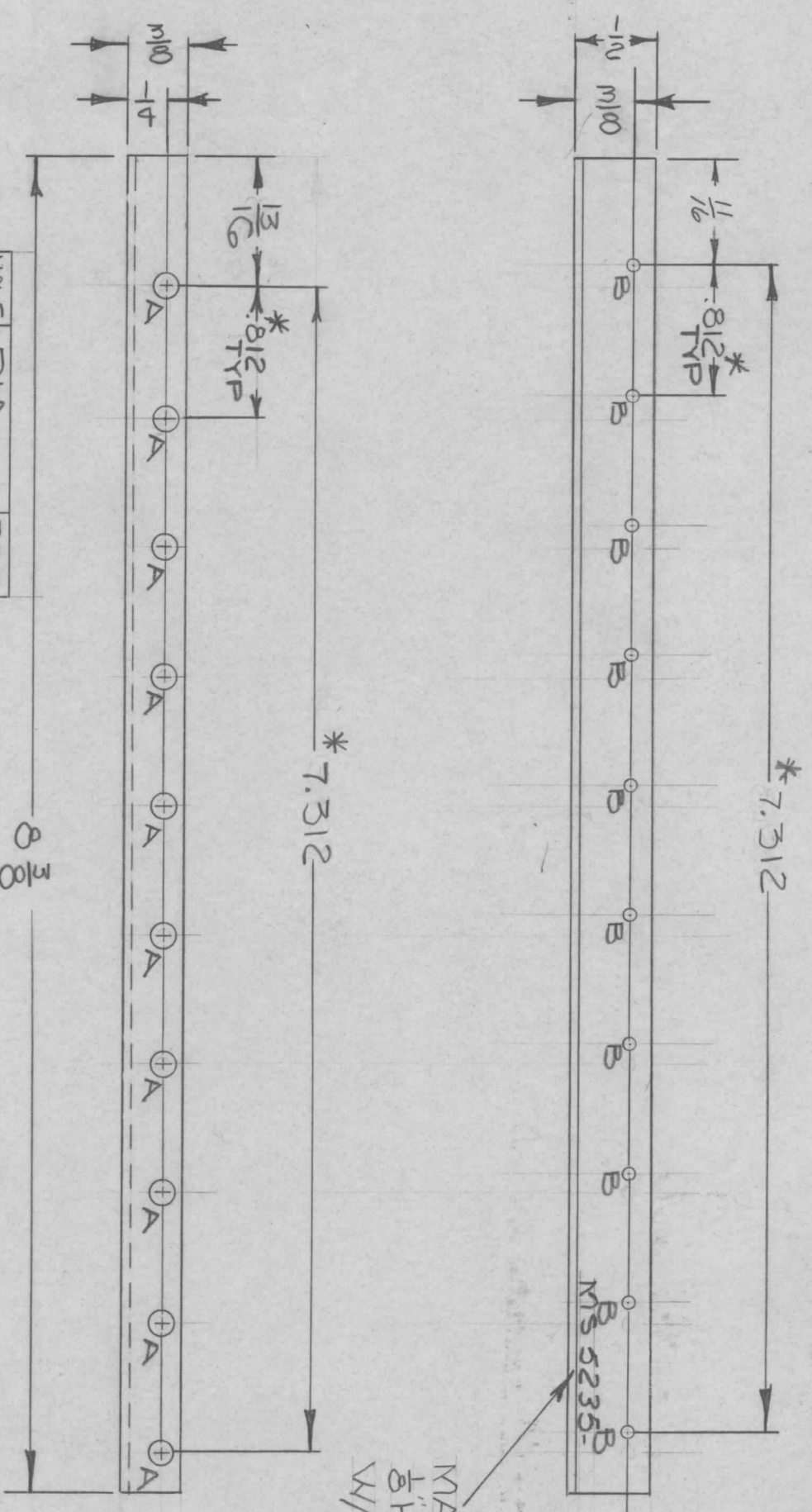


REVISIONS							
ZONE	LTR	DESCRIPTION	DATE	E.M.N. NO.	DRAFT	CHKD	APPD
X		EXP. RELEASE	10-23-61				
Ø		ORIG. RELEASE	12-4-69				



HOLE	DIA	REQ
A	3/16 DIA	10
B	.067 DIA	10

*NOTE: TOLERANCES NOT ACCUMULATIVE

MARK TMC P/B
Ø HIGH GOTHIC
W/LATEST REV. LETTER

MS5235-1 AS SHOWN (RIGHT HAND)
MS5235-2 OPP. HAND (LEFT HAND)

REQ'D ITEM	PART NUMBER	DESCRIPTION	SYM.
EATON		LIST OF MATERIAL	

DATE	DATE	DATE	DATE
12/3/68	10-23-61	10-23-61	10-23-61

FINAL APPROVAL	MECH. DES.	ELECT. DES.	CHECKED	DRAWN
<i>[Signature]</i>			SG	<i>[Signature]</i>

UNLESS OTHERWISE SPECIFIED DIMENSIONS ARE IN INCHES AND INCLUDE CHEMICALLY APPLIED OR PLATED FINISHES	DECIMALS	TOLS.	FRACTIONS	ANGLES
	.X ± .05		1/64	0° - 30'
	.XX ± .01			
	.XXX ± .005			

QTY / UNIT	MODEL USED ON	ASSY. NO.
1	RTIH-3	
	APPLICATION	
	CODE	5401-451

NOTICE TO PERSONS RECEIVING THIS DRAWING
THE TECHNICAL MATERIEL CORPORATION claims proprietary right in the material disclosed hereon. This drawing is issued in confidence for engineering information only and may not be reproduced or used to manufacture anything shown hereon without permission from THE TECHNICAL MATERIEL CORPORATION to the user. This drawing is loaned for mutual assistance and is subject to recall at any time.