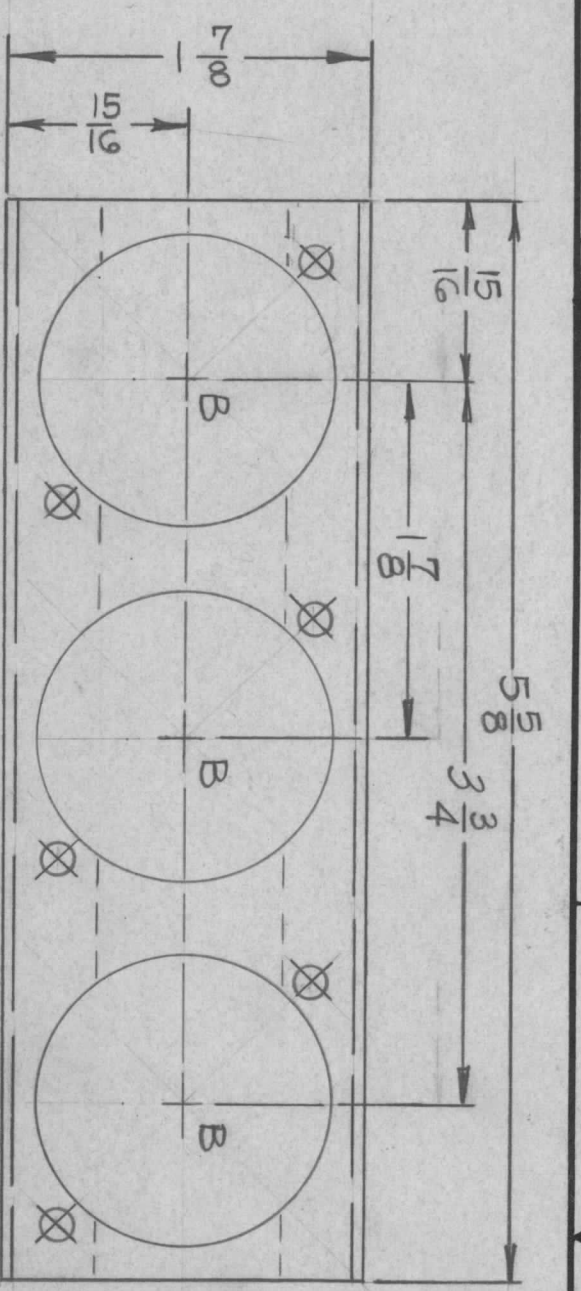
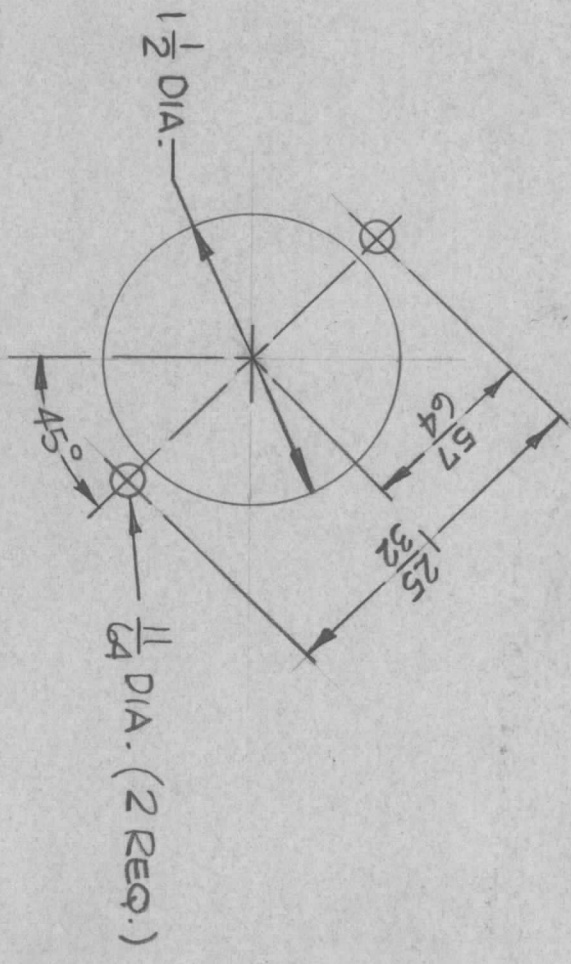
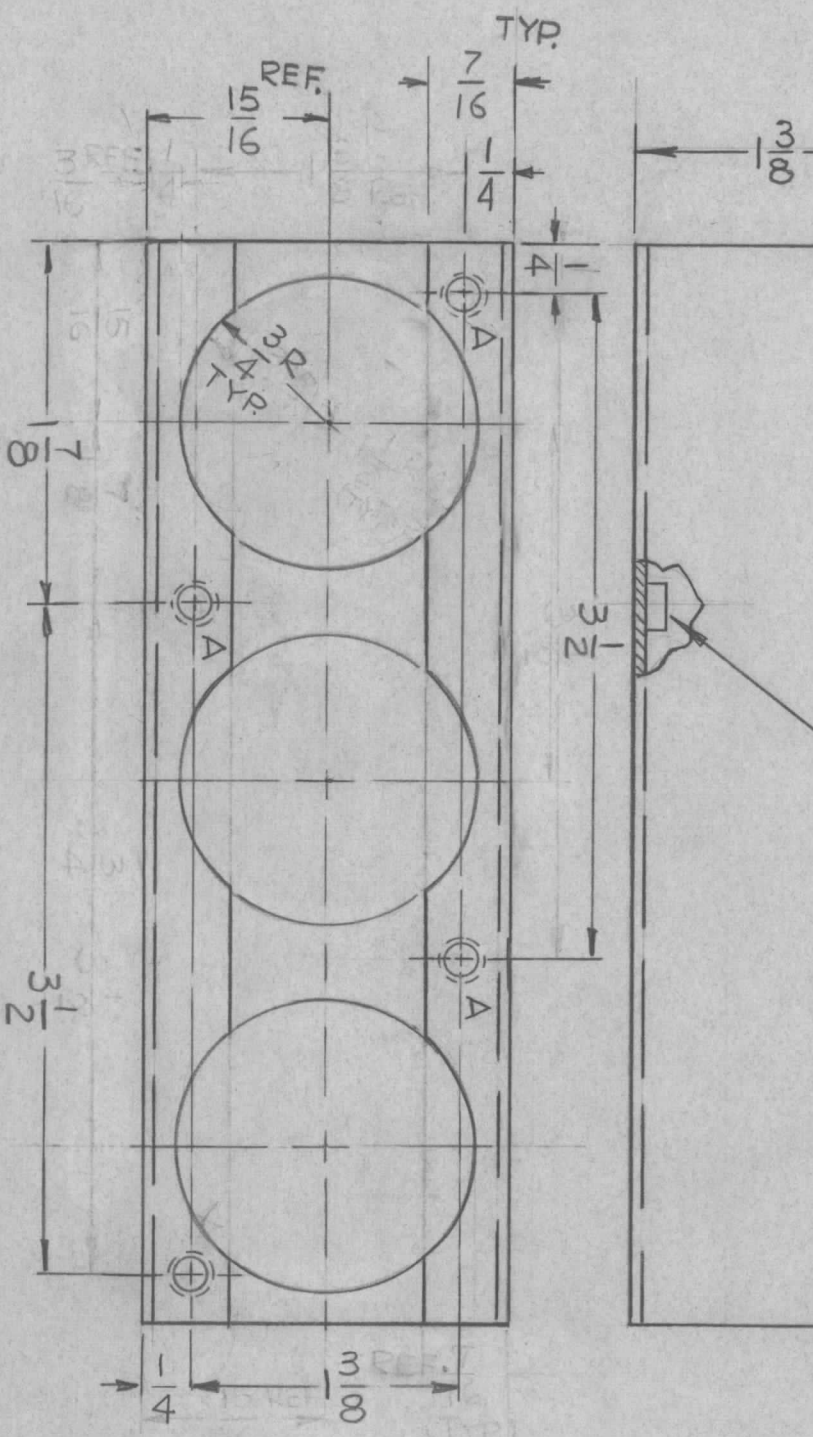


REVISIONS							
ZONE	LTR	DESCRIPTION	DATE	E.M.N. NO	DRAFT	CHKD	APPD
	X1	REV. & REDRAWN	11-26-68			HLL	HLL
		ORIG. RELEASE FOR PROD.	12-23-68			EG	EG



MARK TMC PT. NO.
1/8 HIGH GOTHIC
W/LATEST REV.
LETTER.



HOLE	DESCRIPTION	REQ
A	.191-.194 DIA.	4
B	SEE DETAIL	3

DETAIL "B"
(3 REQ.)

REQ'D ITEM	PART NUMBER	DESCRIPTION	SYM.
4	1	NT129-632-4 NUT, PLAIN, SPLINE	A

THE TECHNICAL MATERIEL CORP.
MAMARONECK, NEW YORK

BRACKET, MOUNTING
CAPACITOR

SIZE	CODE IDENT. NO.	DWG NO.	ISSUE
B	82679	M55233	
SCALE	1:1	SHEET	OF

- UNLESS OTHERWISE SPECIFIED:
- USE MATERIAL THICKNESS FOR MAXIMUM RADIUS ON ALL BENDS
 - ALL ANGULAR BENDS 90 DEGREES
 - REMOVE ALL BURRS AND SHARP EDGES
 - MOUNT INSERTS AFTER FINISHING

QTY / UNIT	MODEL USED ON	ASS'Y NO.
1	RTMU-4	
APPLICATION		
CODE	S401-451	

UNLESS OTHERWISE SPECIFIED DIMENSIONS ARE IN INCHES AND INCLUDE CHEMICALLY APPLIED OR PLATED FINISHES	
DECIMALS	FRACTIONS
X ± .05	1/64
.XX ± .01	ANGLES
.XXX ± .005	° ± .30'
MATERIAL .063 THK ALUM. 5052-H32	
FINISH S404-YELLOW IRIDITE	

FINAL APPROVAL	DATE
<i>[Signature]</i>	12/29/68
MECH. DES.	DATE
<i>[Signature]</i>	12/29/68
ELECT. DES.	DATE
<i>[Signature]</i>	12/29/68
CHECKED	DATE
<i>[Signature]</i>	12/29/68
DRAWN	DATE
H-AUSTIN	12/26/68

NOTICE TO PERSONS RECEIVING THIS DRAWING
THE TECHNICAL MATERIEL CORPORATION claims proprietary right in the material disclosed hereon. This drawing is issued in confidence for engineering information only and may not be reproduced or used to manufacture anything shown hereon without permission from THE TECHNICAL MATERIEL CORPORATION to the user. This drawing is loaned for mutual assistance and is subject to recall at any time.