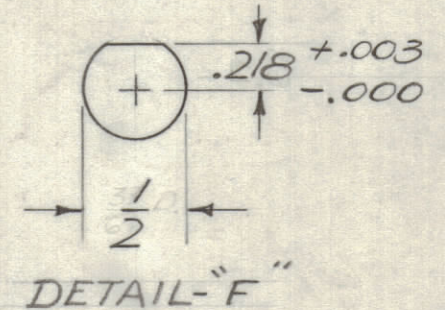
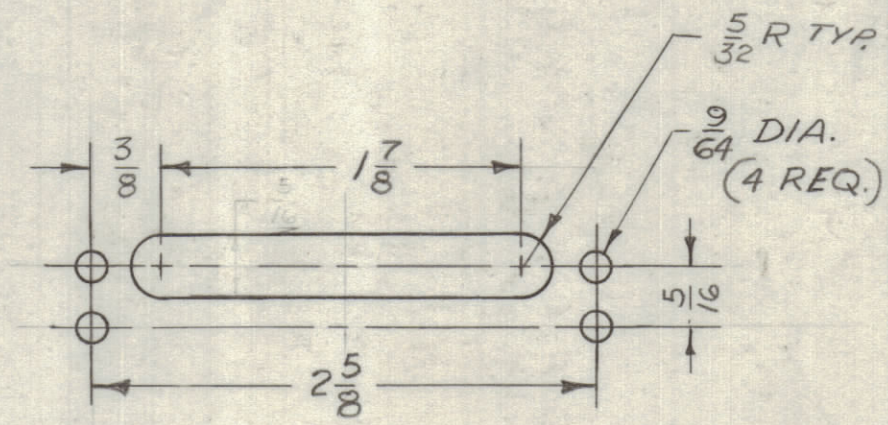
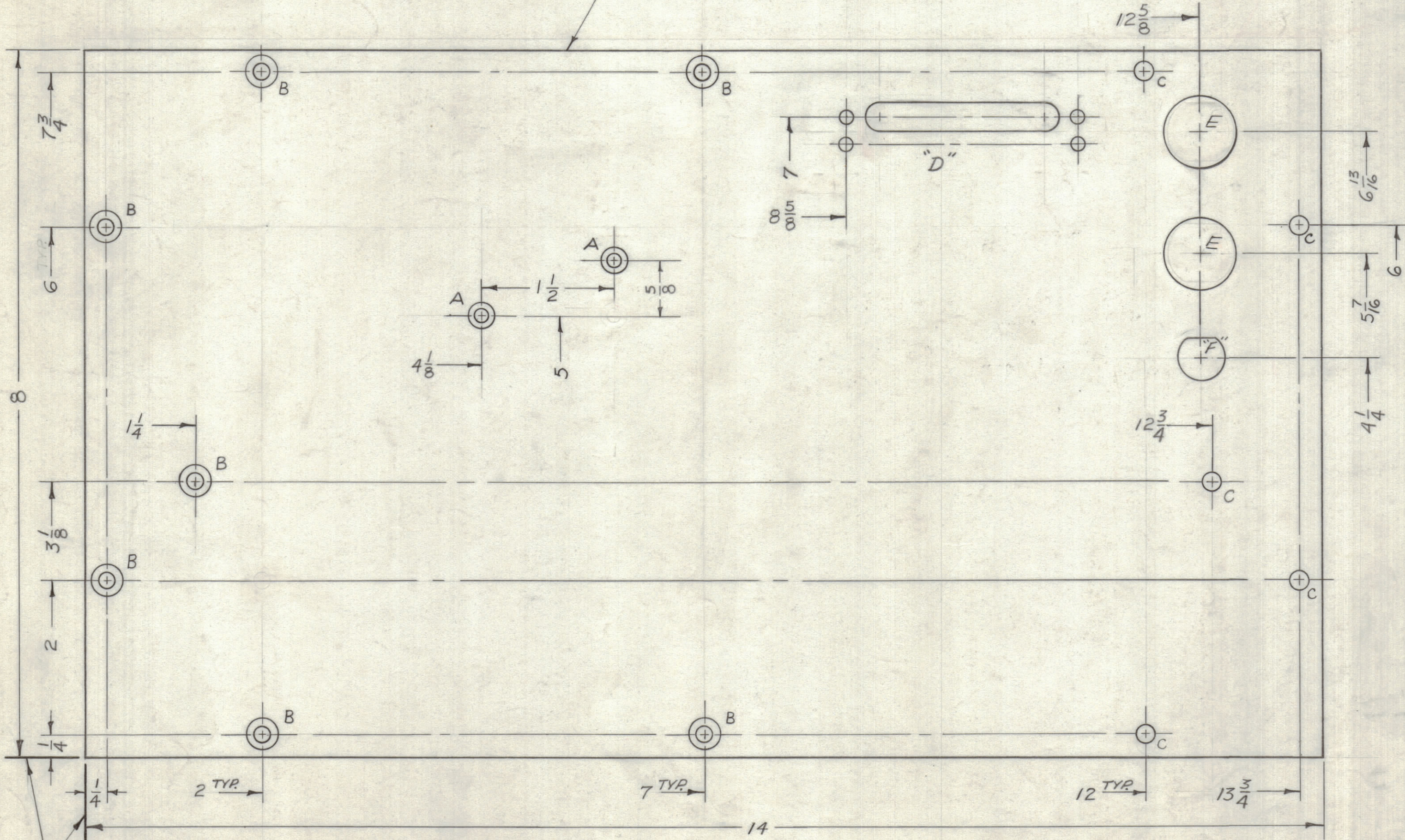


HOLE	DESCRIPTION	REQ.
A	DR. #144 S'SINK 82° TO 284 D.	2
B	DR. #169 S'SINK 82° TO 337 D.	7
C	13/64 DIAMETER	5
D	SEE DETAIL	1
E	13/16 DIA.	2
F	SEE DETAIL	1

REVISIONS						
ZONE	LTR	DESCRIPTION	DATE	E.M.N.O	DRAFT	CHKD
	X	EXPERIMENTAL RELEASE	11/1/67			
	X ₁	ON "E" DET. 11/16 WAS 43/64, ON "F" 15/64 WAS 7/32	4-30-68			
	Ø	ORIG. RELEASE FOR PROD.	5-1-68			
	A	DELE. DET. E & CHG. E HOLES	4-26-72	20621	GE	

MARK TMC P/N (MS 5232) 1/8" HIGH
GOTHIC W/LATEST REVISION LETTER
ON REAR.



LOCATING
BASE LINE

FINISH NOTES:
1. S404 - IRIDITE 14-2 AL-COAT.
2. S114 - ZINC CHROMATE PRIMER } FRONT AND
3. BLACK MATT } EDGES ONLY
PRIME AND PAINT PER CUSTOMER'S SPECIFICATIONS.

QTY / UNIT	MODEL USED ON	ASS'Y NO.
1	GTTA-1-25	TTA-1
APPLICATION		
CODE	S401-451	
A		

NOTICE TO PERSONS RECEIVING THIS DRAWING
THE TECHNICAL MATERIEL CORPORATION claims proprietary right in the material disclosed hereon. This drawing is issued in confidence for engineering information only and may not be reproduced or used to manufacture anything shown hereon without permission from THE TECHNICAL MATERIEL CORPORATION to the user. This drawing is loaned for mutual assistance and is subject to recall at any time.

UNLESS OTHERWISE SPECIFIED DIMENSIONS ARE IN INCHES AND INCLUDE CHEMICALLY APPLIED OR PLATED FINISHES	
TOLERANCES ON	
DECIMALS	FRACTIONS
.X ± .05	± 1/64
.XX ± .01	ANGLES
.XXX ± .005	± 0° -30'
MATERIAL .081 ALUMINUM 5052-H32	
FINISH SEE NOTES	

QTY. REQ.	ITEM	PART NO.	DESCRIPTION	SYMBOL
REF: LD 2260				
F. BUDETTI LIST OF MATERIAL				
THE TECHNICAL MATERIEL CORP. MAMARONECK, NEW YORK				
PLATE, MTG. LOAD				
SIZE	CODE IDENT. NO.	DWG NO.	ISSUE	
C	82679	MS 5232	A	
SCALE 1:1			SHEET OF	