

4

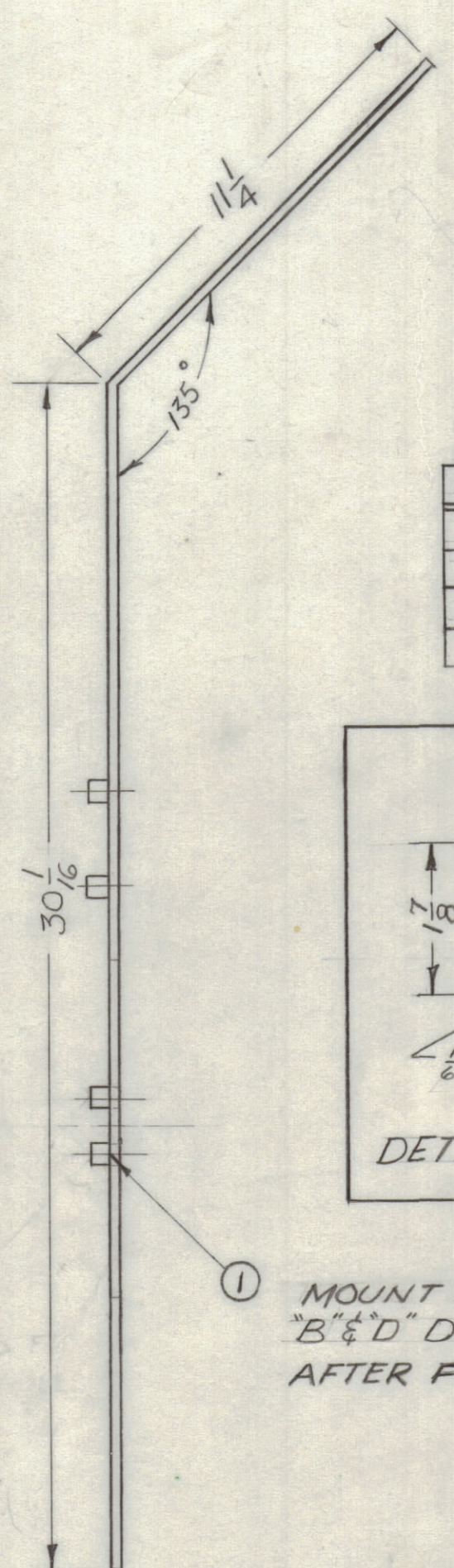
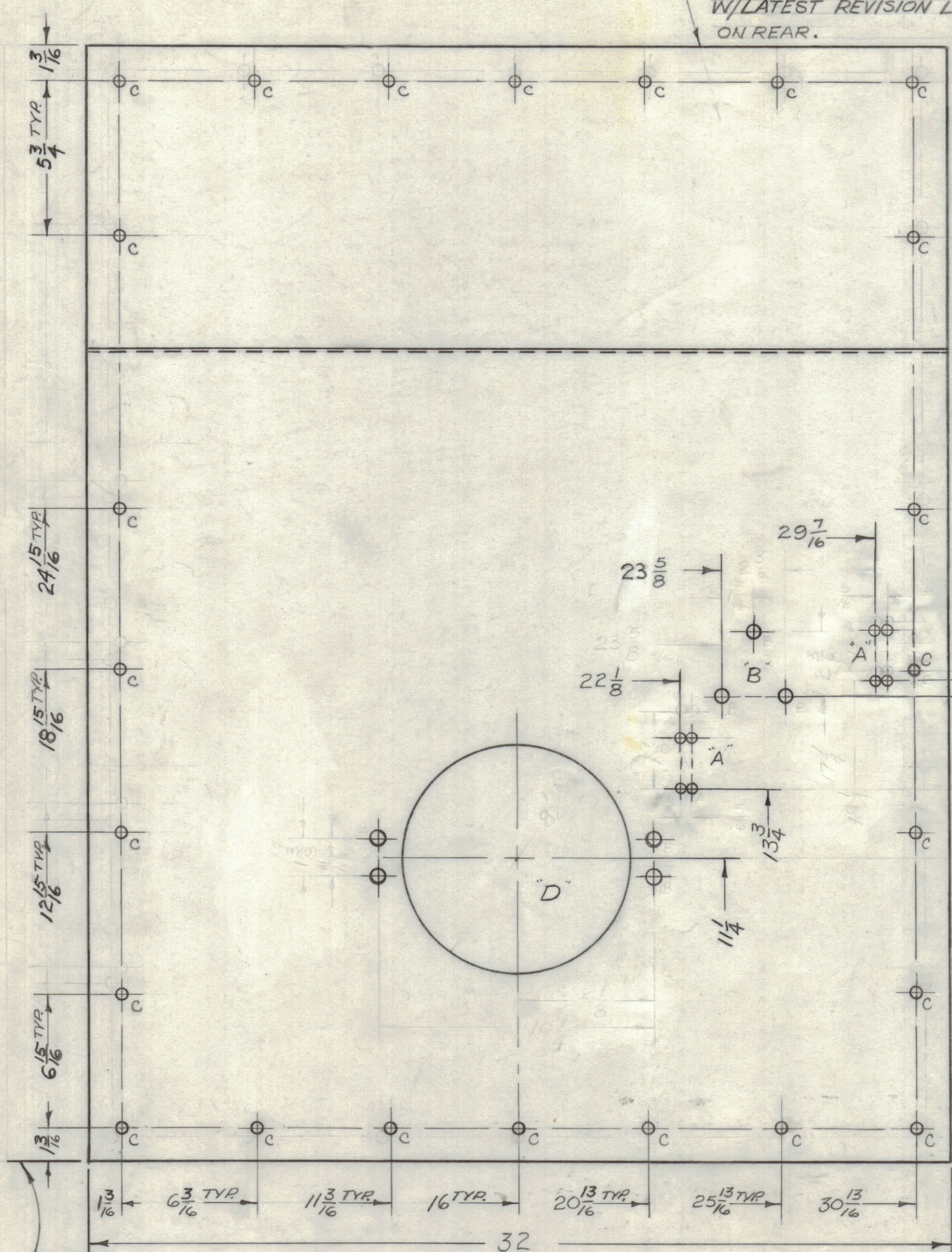
3

2

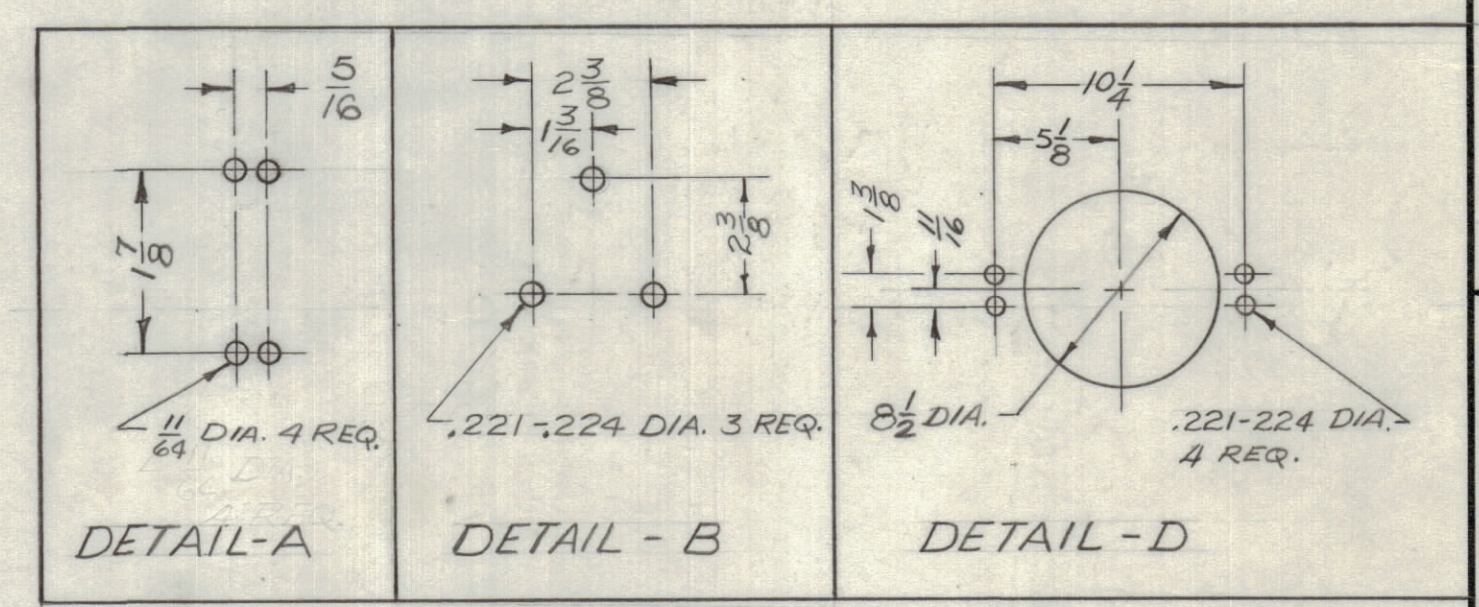
1

REVISIONS						
ZONE	LTR	DESCRIPTION	DATE	E.M.N.NO	DRAFT	CHKD APPD
	X	EXP. RELEASE	10/20/67	-	End	
	XI	DIM. CLARIFIED	2/28/68	-	End	
		ORIGINAL RELEASE FOR PRODUCTION	2-19-68			

MARK TMC P/N  $\frac{1}{8}$  HIGH GOTHIC  
W/LATEST REVISION LETTER (MS 5231)  
ON REAR.



HOLES	DESCRIPTION	REQ.
A	SEE DETAIL	2
B	SEE DETAIL	1
C	13/64 DIA.	24
D	SEE DETAIL	1



① MOUNT IN  
"B" & "D" DETAILS  
AFTER FINISHING

LOCATING  
BASE LINES

FRONT VIEW

1	GPT-40KEL	
QTY / UNIT	MODEL USED ON	ASS'Y NO.
APPLICATION		
CODE	S 401-451	

NOTICE TO PERSONS RECEIVING THIS DRAWING  
THE TECHNICAL MATERIEL CORPORATION claims proprietary right in the material disclosed hereon. This drawing is issued in confidence for engineering information only and may not be reproduced or used to manufacture anything shown hereon without permission from THE TECHNICAL MATERIEL CORPORATION to the user. This drawing is loaned for mutual assistance and is subject to recall at any time.

UNLESS OTHERWISE SPECIFIED  
DIMENSIONS ARE IN INCHES  
AND INCLUDE CHEMICALLY APPLIED  
OR PLATED FINISHES

TOLERANCES ON

DECIMALS	FRACTIONS
.X ± .05	± 1/64
.XX ± .01	ANGLES
.XXX ± .005	± 0° .30'

MATERIAL .081 ALUMINUM  
5052 H32

FINISH  
S404 YEL IRIDITE

7	1	NT-129-832-4	NUT, PLAIN SPLINE	B,D
QTY. REQ.	ITEM	PART NO.	DESCRIPTION	SYMBOL
F. BUDETTI LIST OF MATERIAL				
FINAL APPROVAL		DATE	THE TECHNICAL MATERIEL CORP.	
MECH. DES.		2/18/69	MAMARONECK, NEW YORK	
ELECT. DES.		2-17-69	SHIELD, TOP P/S	
CHECKED		DATE		
DRAWN		DATE		
MATERIAL		DATE	SIZE	CODE IDENT. NO.
5052 H32		10/20/67	C	82679
FINISH			DWG NO.	
S404 YEL IRIDITE			MS5231	
SCALE 1:4			ISSUE	
			SHEET OF	

4

3

2

1

MS 5231