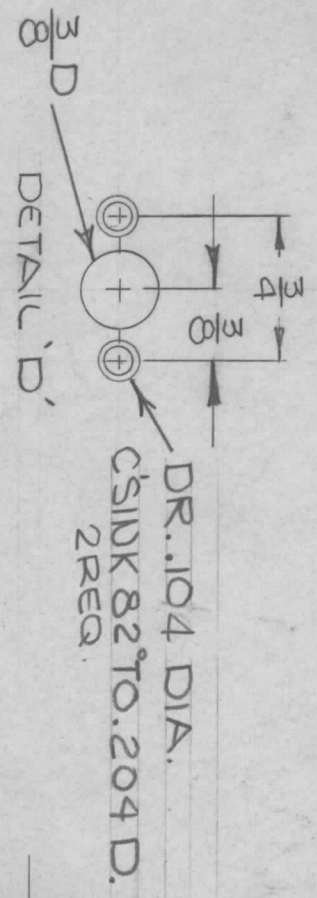
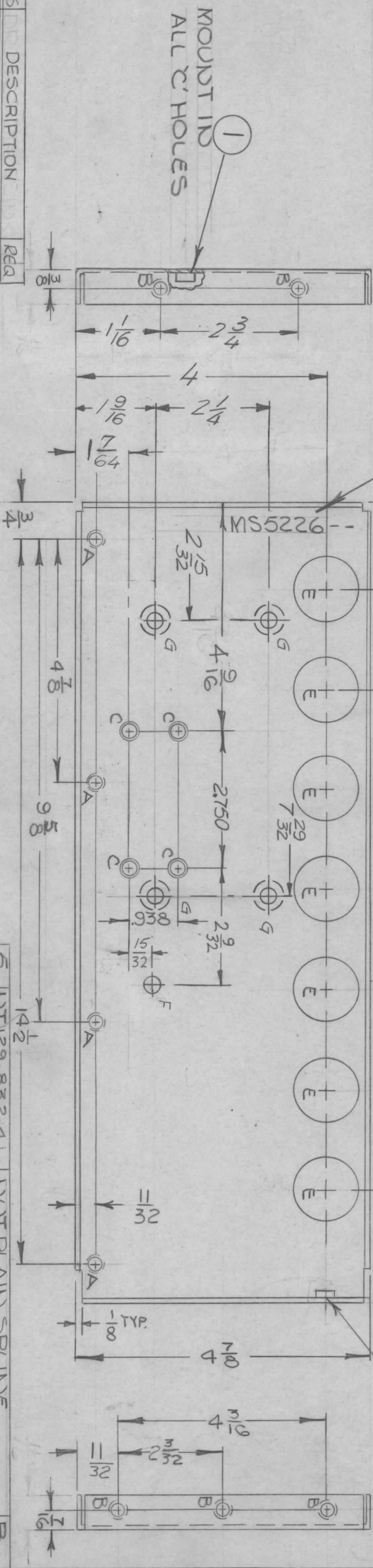


REVISIONS						
ZONE	LTR	DESCRIPTION	DATE	E.M.N. NO	DRAFT	CHKD
X		EXP. RELEASE	11/23/67			
Ø		ORIG. RELEASE FOR PROD	11/20/68	Ø	R.G.	
A		REVISED & UPDATED	8/21/69	19558	GE	LD
B		"4" DIM RELOC.	4/10/70	19805	KTL	GE



MARK TMC P/D  
 1/8" HIGH GOTHIC  
 W/LATEST REV LETTER



HOLES	DESCRIPTION	REQD
A	DR. 104 DIA. CSINK 82° TO .337	4
B	.221-.224 DIA.	5
C	.250-.253 DIA.	4
D	SEE DETAIL	6
E	1/4 DIA.	7
F	5/16 DIA.	1
G	1/4 DIA. 82° CSINK TO .284 DIA	4

- USE MATERIAL THICKNESS FOR MAXIMUM RADIUS ON ALL BENDS
- ALL ANGULAR BENDS 90 DEGREES
- REMOVE ALL BURRS AND SHARP EDGES
- MOUNT INSERTS AFTER FINISHING

MSS2226-1	AS SHOWN (DELE. G HOLES)	LEFT
MSS22262	OPP. HAND & DELETE "E" HOLES	RIGHT

IEA	RTTD-4	ASS'Y NO.
QTY / UNIT		MODEL USED ON
APPLICATION		CODE
		SA901-451

NOTICE TO PERSONS RECEIVING THIS DRAWING  
 THE TECHNICAL MATERIEL CORPORATION claims proprietary right in the material disclosed hereon. This drawing is issued in confidence for engineering information only and may not be reproduced or used to manufacture anything shown hereon without permission from THE TECHNICAL MATERIEL CORPORATION to the user. This drawing is loaned for mutual assistance and is subject to recall at any time.

UNLESS OTHERWISE SPECIFIED  
 DIMENSIONS ARE IN INCHES  
 AND INCLUDE CHEMICALLY APPLIED  
 OR PLATED FINISHES

DECIMALS	FRACTIONS
X ± .05	1/64
.XX ± .01	ANGLES
.XXX ± .005	0° .30'

MATERIAL .081 THK  
 ALUMINUM  
 5052 H-32  
 FINISH S404  
 YEL. IRIDITE

REQ'D ITEM	PART NUMBER	DESCRIPTION	SYM.
5	DT129-832-4	DOT PLAIN SPLINE	B
4	DT129-1032-4	DOT PLAIN SPLINE	C

FINAL APPROVAL  
 MECH. DES. DATE 11/19/68  
 ELECT. DES. DATE  
 CHECKED DATE 8/1/68  
 DRAWN DATE 10/26/67

LIST OF MATERIAL  
 THE TECHNICAL MATERIEL CORP.  
 MAMARONECK, NEW YORK  
 PLATE, LEFT & RIGHT SIDE

SIZE	CODE IDENT. NO.	DWG NO.	ISSUE
B	82679	MSS2226	B
SCALE	1:2	SHEET	OF