

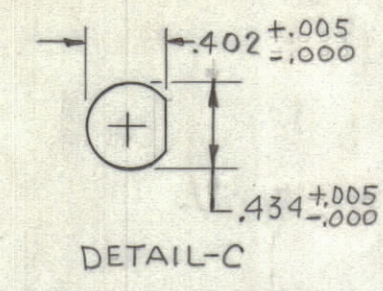
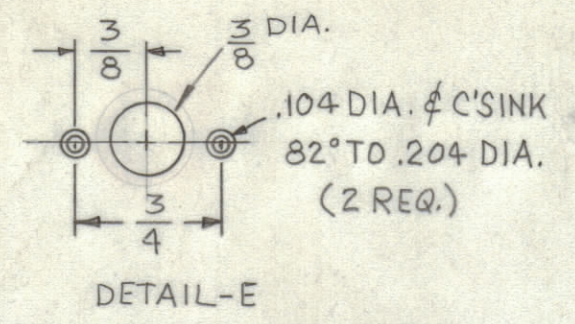
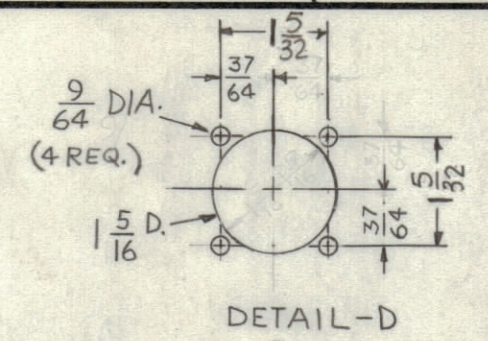
4

3

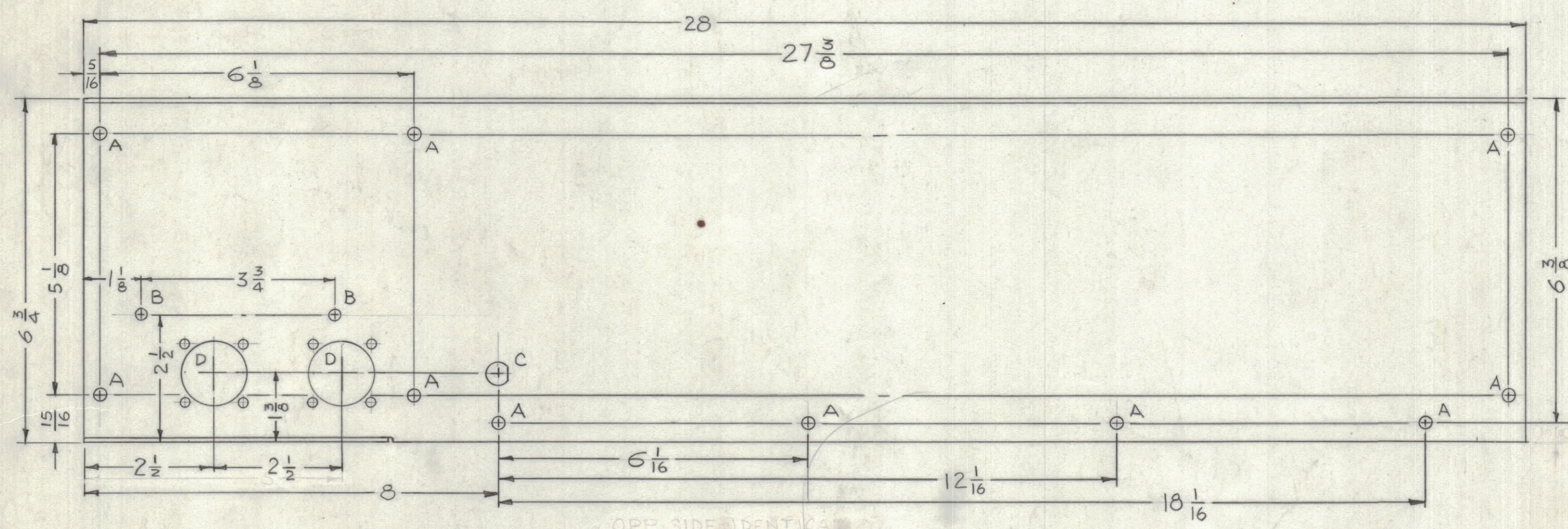
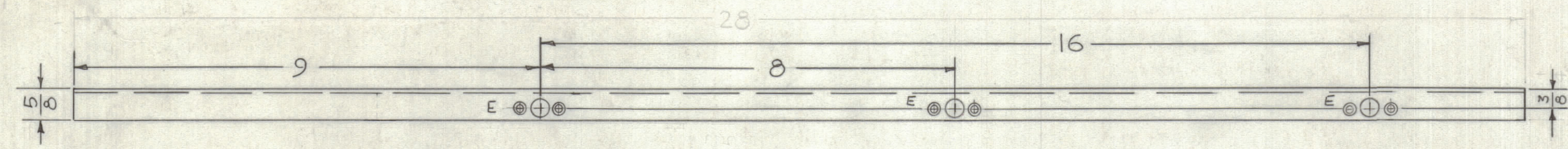
2

1

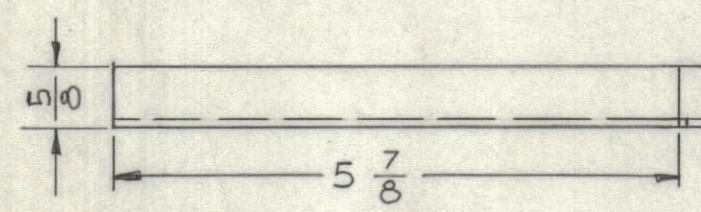
HOLE	DESCRIPTION	REQ.
A	13/64 DIA.	10
B	11/64 DIA.	2
C	SEE DETAIL	1
D	SEE DETAIL	2
E	SEE DETAIL	3



REVISIONS						
ZONE	LTR	DESCRIPTION	DATE	E.M.N.NO	DRAFT	CHKD
	X	EXP. RELEASE	10.10.67		H.G.	
		ORIGINAL RELEASE FOR PRODUCTION	2/17/69		RG	



OPP. SIDE IDENTICAL



MS 5218-
 MARK TMC P/N 1/8 HIGH
 GOTHIC W/LATEST REV.
 LETTER.

REF. LD2257-

QTY. REQ.	ITEM	PART NO.	DESCRIPTION	SYMBOL
	F. BUDETTI		LIST OF MATERIAL	SK060040 MS2202
			THE TECHNICAL MATERIEL CORP.	MAMARONECK, NEW YORK
			PLATE REAR, MMX DRAWER	
			SIZE C	CODE IDENT. NO. 82679
			SCALE 1:2	DWG NO. MS5218
				ISSUE
				SHEET OF

QTY / UNIT	MODEL USED ON	ASS'Y NO.
1	GPT 40 KEL	
1	GPT 10 KLFE	
1	GPT 10 KRL	
APPLICATION		
	CODE A	S401-451

UNLESS OTHERWISE SPECIFIED
 DIMENSIONS ARE IN INCHES
 AND INCLUDE CHEMICALLY APPLIED
 OR PLATED FINISHES

TOLERANCES ON

DECIMALS	FRACTIONS
.X ± .05	± 1/64
.XX ± .01	ANGLES
.XXX ± .005	± 0° -30'

MATERIAL .081 THK. ALUM.
 5052-H32

FINISH S404 YEL
 IRIDITE

NOTICE TO PERSONS RECEIVING THIS DRAWING
 THE TECHNICAL MATERIEL CORPORATION claims proprietary right in the material disclosed hereon.
 This drawing is issued in confidence for engineering information only and may not be reproduced or used
 to manufacture anything shown hereon without permission from THE TECHNICAL MATERIEL CORPORATION
 to the user. This drawing is loaned for mutual assistance and is subject to recall at any time.

UNLESS OTHERWISE SPECIFIED:

1. USE MATERIAL THICKNESS FOR MAXIMUM RADIUS ON ALL BENDS
2. ALL ANGULAR BENDS 90 DEGREES
3. REMOVE ALL BURRS AND SHARP EDGES

4

3

2

1

MS 5218