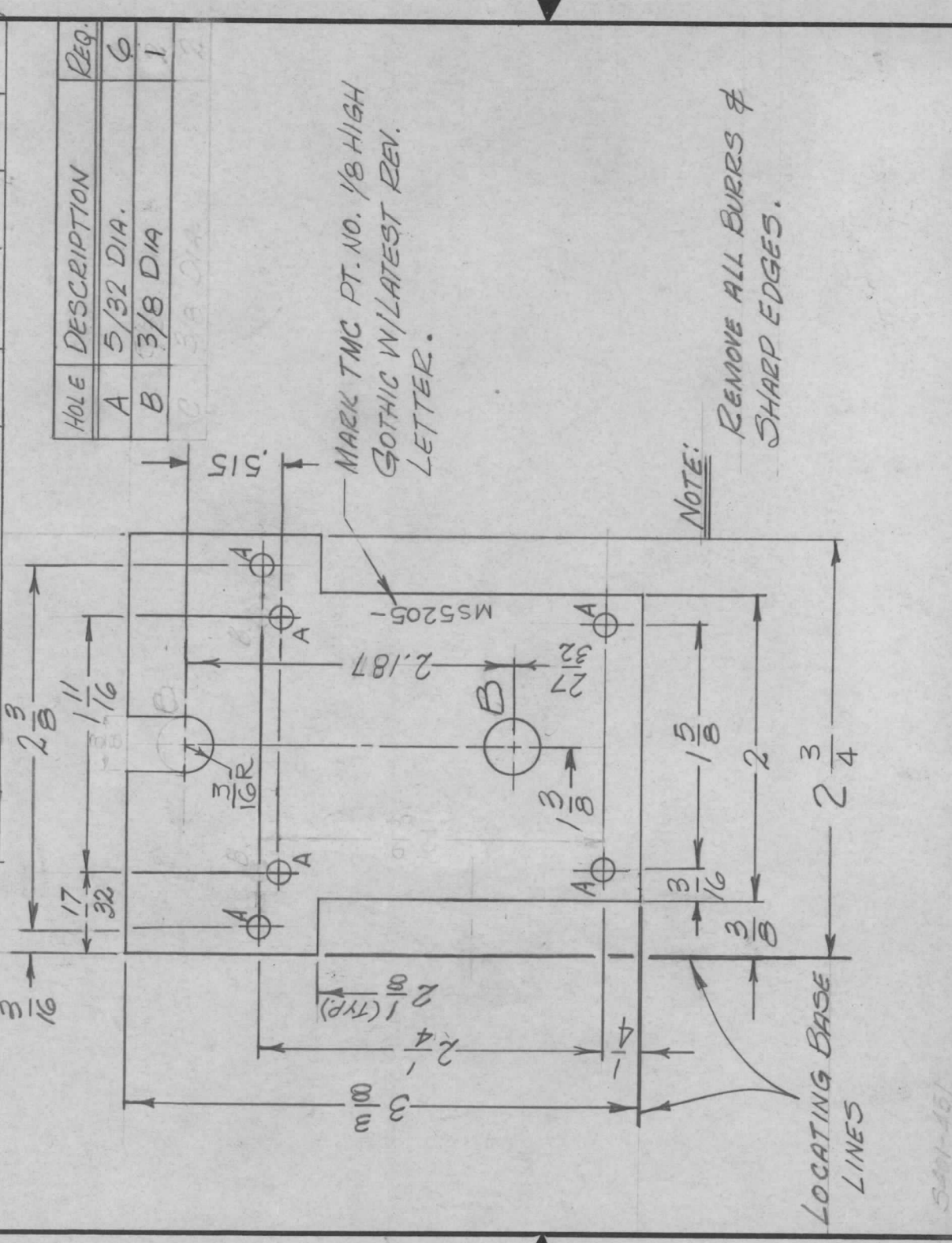


APPLICATION		REVISIONS							
QTY	MODEL USED ON	ASSY NO.	LTR	DESCRIPTION	DATE	E.M.N.NO	DRAFT	CHKD	APPD
1	LPA-2		X	EXP. RELEASE	10-4-67	-	HEA		
			X1	2.171 WAS 2.156, 2A WERE	10-16-67	-			
			X2	2-9/64 ADD. & 2.187 WAS 2.156	11-13-67	-			
			Ø	ORIGINAL REL FOR PROD.	11-15-67	-			
			A	2.2 DEL. .5/5 & SLOT ADDED.	1-15-68	18710	HEA.		FB



HOLE	DESCRIPTION	REQ.
A	5/32 DIA.	6
B	3/8 DIA	1

REQ'D ITEM	PART NUMBER	DESCRIPTION	SYM.
LIST OF MATERIAL			
THE TECHNICAL MATERIEL CORP. MAMARONECK, NEW YORK			
PLATE, GEAR, FRONT			

SIZE	CODE IDENT. NO.	DWG NO.	ISSUE
A	82679	M5205	A
SCALE	1:1	M/L	SHEET OF

UNLESS OTHERWISE SPECIFIED DIMENSIONS ARE IN INCHES AND INCLUDE CHEMICALLY APPLIED OR PLATED FINISHES

DECIMALS FRACTIONS
 .X ± .05 1/64
 .XX ± .01 .005
 .XXX ± .005 0° .30'

MATERIAL 1/8 THK.
A. ALUM. 5052-H32

FINISH S404
YEL. IRIDITE

S401-451

REQ'D ITEM PART NUMBER DESCRIPTION SYM.
 BUDETTI
 FINAL APPROVAL DB 11/16/67
 MECH. DES. E.P.
 ELECT. DES. J.V.B.
 CHECKED 11/2/67
 DRAWN H. AUSTIN 10-4-67

NOTICE TO PERSONS RECEIVING THIS DRAWING
 THE TECHNICAL MATERIEL CORPORATION claims proprietary right in the material disclosed hereon. This drawing is issued in confidence for engineering information only and may not be reproduced or used to manufacture anything shown hereon without permission from THE TECHNICAL MATERIEL CORPORATION to the user. This drawing is loaned for mutual assistance and is subject to recall at any time.