

APPLICATION

QTY 1
MODEL USED ON TRO-47A
ASS'Y NO.

LTR X
Ø

DESCRIPTION
EXPERIMENTAL RELEASE
ORIGINAL RELEASE

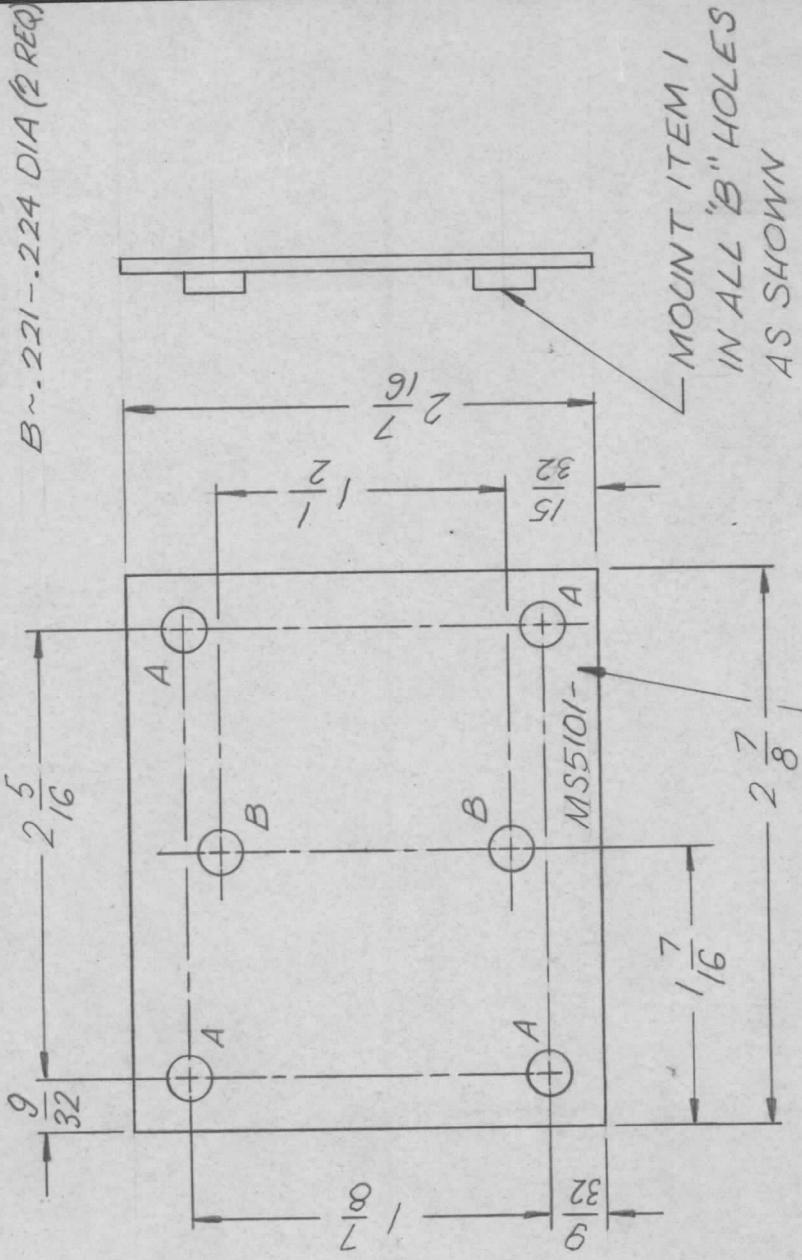
DATE 2.21.67
7/15/69

E.M.N. NO. ---

DRAFT WHD
CO

CHKD

APPD



UNLESS OTHERWISE SPECIFIED:

1. REMOVE ALL BURRS AND SHARP EDGES
2. MOUNT INSERTS AFTER FINISHING

UNLESS OTHERWISE SPECIFIED DIMENSIONS ARE IN INCHES AND INCLUDE CHEMICALLY APPLIED OR PLATED FINISHES		REQ'D ITEM		PART NUMBER		DESCRIPTION		SYM.	
DECIMALS X ± .05 XX ± .01 XXX ± .005		FRACTIONS 1/64 ANGLES 0°-30°		L. BUTLER		LIST OF MATERIAL		B	
MATERIAL .064 ALUM 5052-H32 M		DATE 7/15/69		DATE		DATE		DATE	
FINISH S404 YEL IRIDITE S401-451		MECH. DES. C.B.		ELECT. DES.		CHECKED		DRAWN WHD	
NOTICE TO PERSONS RECEIVING THIS DRAWING THE TECHNICAL MATERIEL CORPORATION claims proprietary right in the material disclosed hereon. This drawing is issued in confidence for engineering information only and may not be reproduced or used to manufacture anything shown hereon without permission from THE TECHNICAL MATERIEL CORPORATION to the user. This drawing is loaned for mutual assistance and is subject to recall at any time.		THE TECHNICAL MATERIEL CORP. MAMARONECK, NEW YORK		PLATE, MTG, XEMR TIEDOWN		SIZE A		CODE IDENT. NO. 82679	
DWG NO. MS5101		SCALE 1:1		SHEET		OF		ISSUE Ø	

APPLICATION

QTY 2
MODEL USED ON TRO-47A

ASS'Y NO.

LTR

X

DESCRIPTION

EXPERIMENTAL RELEASE
ORIGINAL RELEASE

DATE

2.21.67
7/15/69

E.M.N.NO

-H-

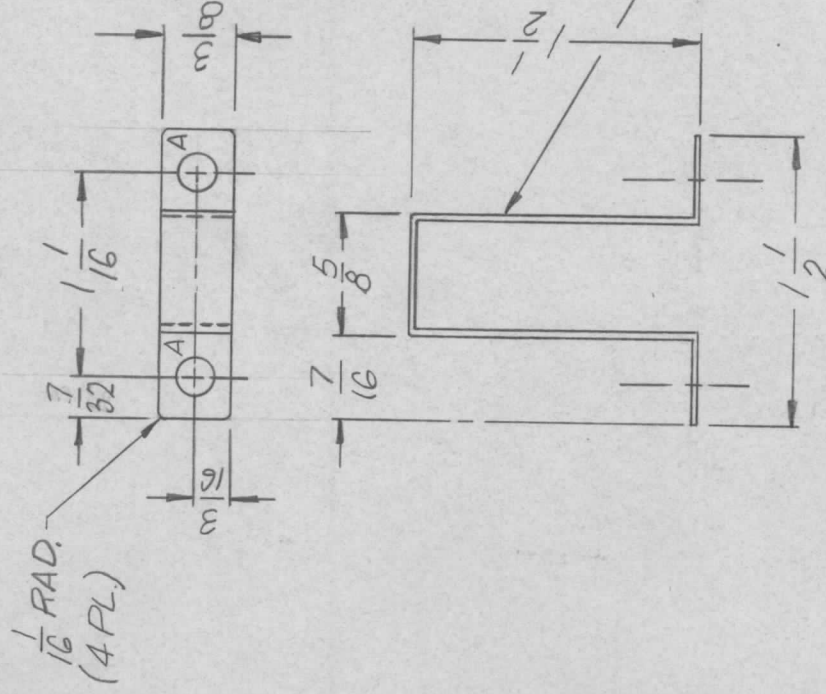
DRAFT

GHU
GU

CHKD

APPD

REVISIONS



UNLESS OTHERWISE SPECIFIED:

1. USE MATERIAL THICKNESS FOR MAXIMUM RADIUS ON ALL BENDS.
2. ALL ANGULAR BENDS 90 DEGREES.
3. REMOVE ALL BURRS AND SHARP EDGES.

UNLESS OTHERWISE SPECIFIED
DIMENSIONS ARE IN INCHES
AND INCLUDE CHEMICALLY APPLIED
OR PLATED FINISHES

DECIMALS FRACTIONS
.X ± .05 TOLS. .1/64
.XX ± .01 ANGLES
.XXX ± .005 0° .30'

MATERIAL - 0.020 ALUM.
5052-H32

FINISH S404
YELLOW IRIDITE

S401-451

REQ'D

ITEM

PART NUMBER

DESCRIPTION

SYM.

L. BUTLER

FINAL APPROVAL
DATE 7/15/69

MECH. DES.
DATE

ELECT. DES.
DATE

CHECKED
DATE

DRAWN 440
DATE 2.21.67

LIST OF MATERIAL

THE TECHNICAL MATERIEL CORP.

MAMARONECK, NEW YORK

STRAP, XFMR, TIEDOWN

NOTICE TO PERSONS RECEIVING THIS DRAWING

THE TECHNICAL MATERIEL CORPORATION claims proprietary right in the material disclosed hereon. This drawing is issued in confidence for engineering information only and may not be reproduced or used to manufacture anything shown hereon without permission from THE TECHNICAL MATERIEL CORPORATION to the user. This drawing is loaned for mutual assistance and is subject to recall at any time.

SIZE

A

CODE IDENT. NO.

82679

DWG NO.

MS5102

ISSUE

Ø

SCALE 1:1

SHEET

OF

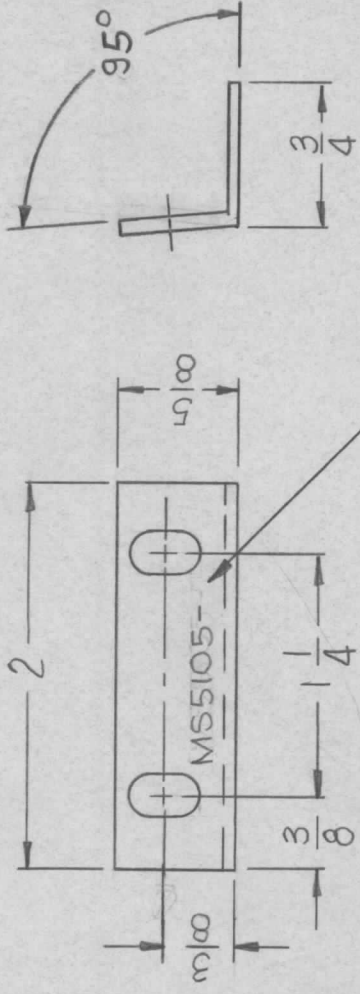
APPLICATION

QTY	MODEL USED ON	ASS'Y NO.	LTR
2	TR162A	A4577	X

REVISIONS

DESCRIPTION	DATE	E.M.N.NO	DRAFT	CHKD	APPD
EXPERIMENTAL RELEASE	3-16-67	4	LHW	JQ	AB
ORIG. RELEASE FOR PROP.	4-13-67		RG		
A BEND ANGLE WAS 85°	6-27-67	18320	L.A.K		L.B

~ HOLE ~
A - 7/32 X 3/8 SLOT - (2 REQ)



MARK TMC PT/NO.
1/8 HIGH GOTHIC W/LATEST
REVISION LETTER

UNLESS OTHERWISE SPECIFIED:

- 1 - USE MATERIAL THICKNESS FOR MAXIMUM RADIUS ON ALL BENDS
- 2 - REMOVE ALL BURRS AND SHARP EDGES

UNLESS OTHERWISE SPECIFIED DIMENSIONS ARE IN INCHES AND INCLUDE CHEMICALLY APPLIED OR PLATED FINISHES

DECIMALS ± .05 TOLS. 1/64
.XX ± .01 ANGLES 0° 30'
.XXX ± .005

MATERIAL 5052-H32
.064 ALUMINUM

FINISH
S404 YEL (RIDITE)

REQ'D ITEM	PART NUMBER	DESCRIPTION	SYM.
L. BUTLER			
FINAL APPROVAL	DATE	LIST OF MATERIAL THE TECHNICAL MATERIEL CORP. MAMARONECK, NEW YORK BKT, XEMR SUPPORT	
MECH. DES.	DATE		
ELECT. DES.	DATE		
CHECKED	DATE		
DRAWN	DATE	SIZE	SCALE
		A	

NOTICE TO PERSONS RECEIVING THIS DRAWING
THE TECHNICAL MATERIEL CORPORATION claims proprietary right in the material disclosed hereon. This drawing is issued in confidence for engineering information only and may not be reproduced or used to manufacture anything shown hereon without permission from THE TECHNICAL MATERIEL CORPORATION to the user. This drawing is loaned for mutual assistance and is subject to recall at any time.

CODE IDENT. NO.	DWG NO.	ISSUE
82679	MS5105	A
SCALE	SHEET	OF

APPLICATION

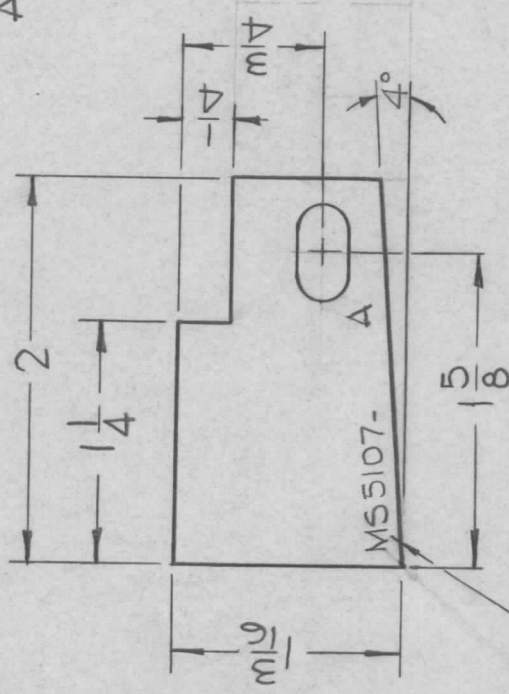
QTY 2
MODEL USED ON AP-128

ASS'Y NO. X
LTR Ø
DESCRIPTION EXP. RELEASE
Ø ORIG RELEASE FOR PROD

REVISIONS

DATE	E.M.N.NO	DRAFT	CHKD	APPD
3-28-67		<i>[Signature]</i>		<i>[Signature]</i>
3-31-67		CV		

HOLE
A- $\frac{1}{4} \times \frac{1}{2}$ 1 REQ



MARK TMC P/N
 $\frac{1}{8}$ HIGH GOTHIC
W/LATEST REV.
LETTER.

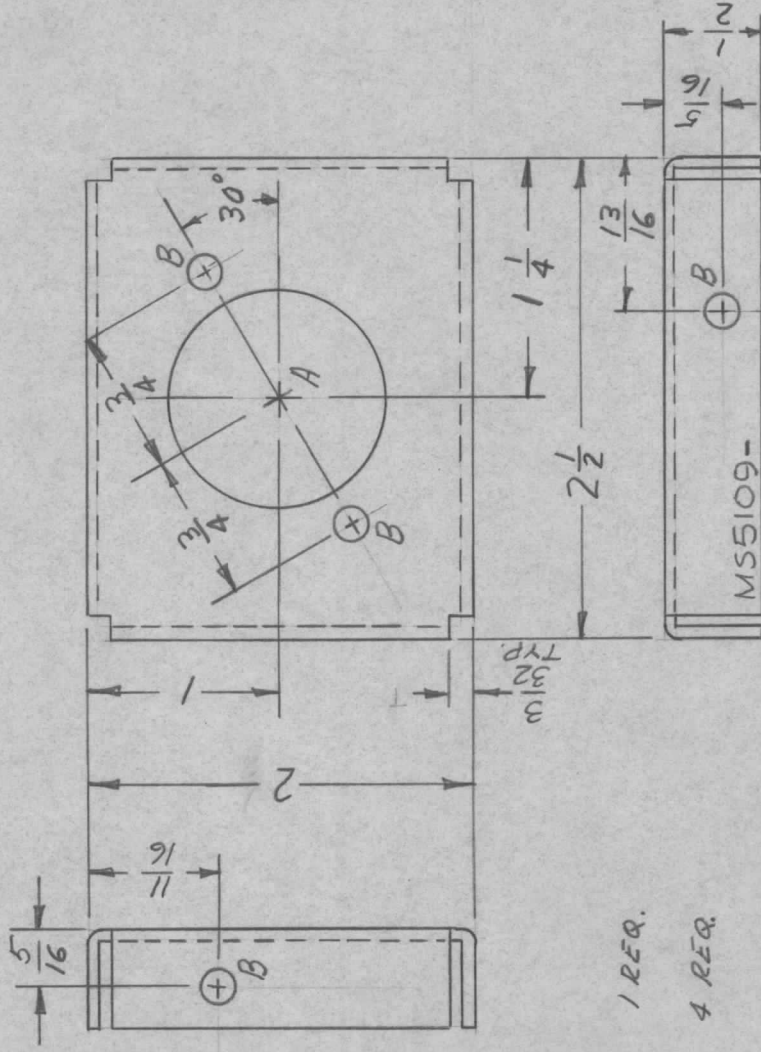
UNLESS OTHERWISE SPECIFIED DIMENSIONS ARE IN INCHES AND INCLUDE CHEMICALLY APPLIED OR PLATED FINISHES	REQ'D	ITEM	PART NUMBER	DESCRIPTION	SYM.
DECIMALS .X ± .05 .XX ± .01 .XXX ± .005				LIST OF MATERIAL	
FRACTIONS 1/64				THE TECHNICAL MATERIEL CORP.	
TOLS. ANGLES 0° .30'				MAMARONECK, NEW YORK	
MATERIAL .081 THK ALUM. 5052-H32				STIFFNER, SLIDE LATCH	
FINISH S404 YEL. IRIDITE					
S401-451, S401-S401-					
NOTICE TO PERSONS RECEIVING THIS DRAWING					
THE TECHNICAL MATERIEL CORPORATION claims proprietary right in the material disclosed hereon. This drawing is issued in confidence for engineering information only and may not be reproduced or used to manufacture anything shown hereon without permission from THE TECHNICAL MATERIEL CORPORATION to the user. This drawing is loaned for mutual assistance and is subject to recall at any time.					
DATE 3-28-67					
DATE 3-28-67					
DATE 3-28-67					
DATE 3-28-67					
DATE 3-28-67					

SIZE A
CODE IDENT. NO. 82679
DWG NO. MS5107
SCALE 1:1
SHEET 1 OF 1

APPLICATION

REVISIONS

QTY	MODEL USED ON	ASS'Y NO.	LTR	DESCRIPTION	DATE	E.M.N.NO	DRAFT	CHKD	APPD
1	KIT334		X	EXP. RELEASE	9/20/67		BN	MA	
			Ø	ORIG. RELEASE FOR PROD.	7.3.67	Ø	R.G.	MA	EH. MA



A ~ 1/8 DIA. 1 REQ.

B ~ 1/64 DIA. 4 REQ.

UNLESS OTHERWISE SPECIFIED:

1. USE MATERIAL THICKNESS FOR MAXIMUM RADIUS ON ALL BENDS
2. ALL ANGULAR BENDS 90 DEGREES
3. REMOVE ALL BURRS AND SHARP EDGES

MARK TMC P/N
1/8" HIGH GOTHIC
& W/LATEST REV.
LETTER.

UNLESS OTHERWISE SPECIFIED DIMENSIONS ARE IN INCHES AND INCLUDE CHEMICALLY APPLIED OR PLATED FINISHES		REQ'D	ITEM	PART NUMBER	DESCRIPTION	SYM.
DECIMALS					SK 3231-MS100	
FRACTIONS					LIST OF MATERIAL	
.X ± .05					THE TECHNICAL MATERIEL CORP.	
.XX ± .01					MAMARONECK, NEW YORK	
.XXX ± .005					BRACKET, RELAY	
MATERIAL .064 ALUM						
FINISH 5404						
VEL IRIDITE						
5401-451						
NOTICE TO PERSONS RECEIVING THIS DRAWING						
THE TECHNICAL MATERIEL CORPORATION claims proprietary right in the material disclosed herein. This drawing is issued in confidence for engineering information only and may not be reproduced or used to manufacture anything shown hereon without permission from THE TECHNICAL MATERIEL CORPORATION to the user. This drawing is loaned for mutual assistance and is subject to recall at any time.						
REQ'D	ITEM	PART NUMBER	DESCRIPTION	SYM.		
			LIST OF MATERIAL			
			THE TECHNICAL MATERIEL CORP.			
			MAMARONECK, NEW YORK			
			BRACKET, RELAY			
SIZE	CODE IDENT. NO.	DWG NO.	ISSUE			
A	82679	MS 5109	Ø			
SCALE	1:1	SHEET	OF			

APPLICATION

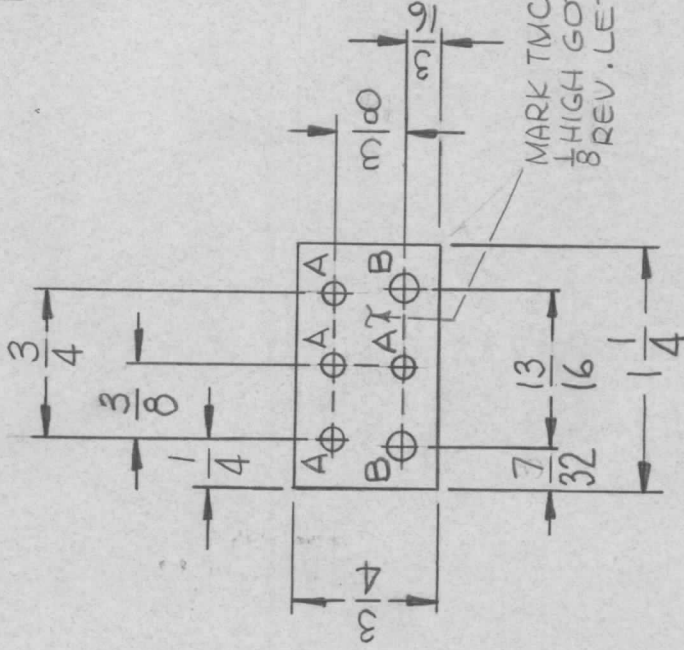
QTY	MODEL USED ON	ASS'Y NO.
1	KIT-338	

LTR
X
Ø

DESCRIPTION
EXP RELEASE
ORIG RELEASE FOR PROD

DATE	E.M.N.NO	DRAFT	CHKD	APPD
5.11.67		WHD		
5.17.67	Ø	CV		JDE

HOLE	DESCRIPTION	REQ
A	.1110 DIA #34 DR	4
B	9/64 DIA.	2



MARK TMC P/N MS5111-
1/8 HIGH GOTHIC W/LATEST.
8 REV. LETTER.

NOTE ~
REMOVE ALL BURRS
AND SHARP EDGES.

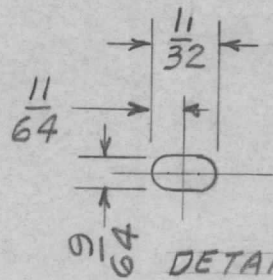
UNLESS OTHERWISE SPECIFIED DIMENSIONS ARE IN INCHES AND INCLUDE CHEMICALLY APPLIED OR PLATED FINISHES	REQ'D	ITEM	PART NUMBER	DESCRIPTION	SYM.
	O. POSE				
DECIMALS .X ± .05 .XX ± .01 .XXX ± .005	FINAL APPROVAL	DATE		LIST OF MATERIAL	
11/64 ANGLES 9°-30'	<i>[Signature]</i>	<i>[Date]</i>		THE TECHNICAL MATERIEL CORP.	
MATERIAL 020 ALUM. 5052-H32	MECH. DES.	DATE		MAMARONECK, NEW YORK	
FINISH S404 YELLOW IRIDITE	ELECT. DES.	DATE		CHANNEL, CABLE SHIELD	
S401-451	CHECKED	DATE			
	DRAWN	DATE			

NOTICE TO PERSONS RECEIVING THIS DRAWING
THE TECHNICAL MATERIEL CORPORATION claims proprietary right in the material disclosed hereon. This drawing is issued in confidence for engineering information only and may not be reproduced or used to manufacture anything shown hereon without permission from THE TECHNICAL MATERIEL CORPORATION to the user. This drawing is loaned for mutual assistance and is subject to recall at any time.

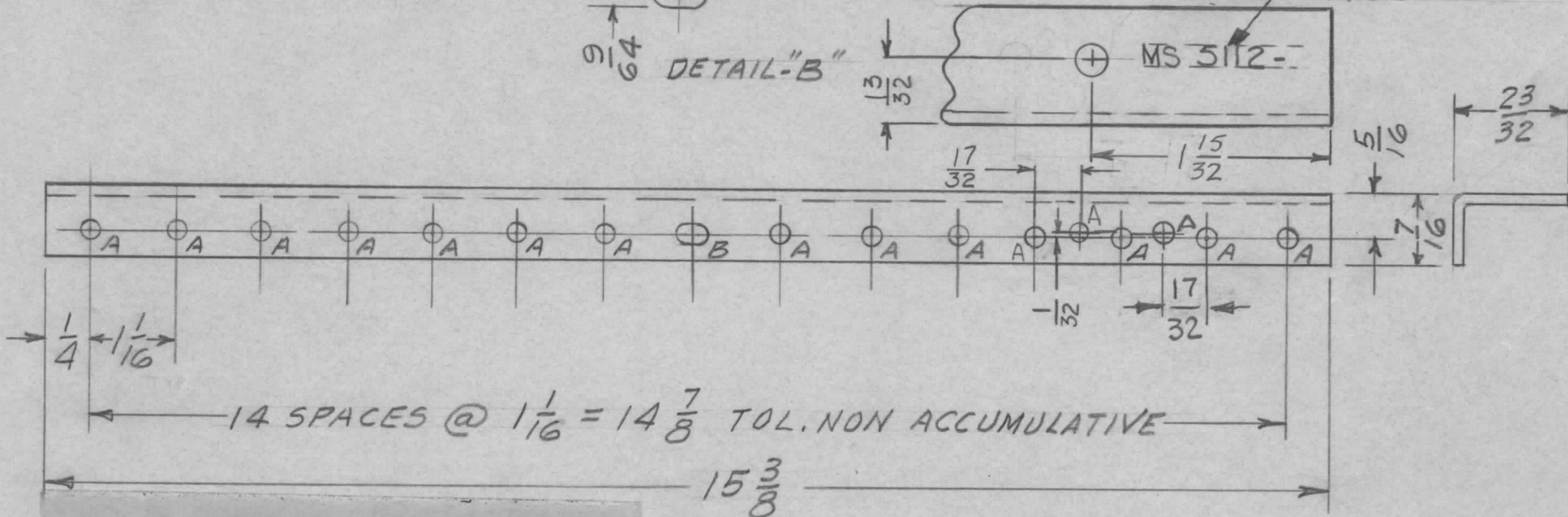
SIZE	CODE IDENT. NO.	DWG NO.	ISSUE
A	82679	MS5111	Ø
SCALE	1:1	SHEET	OF

HOLE	DESCRIPTION	REQ
A	9/64 DIA	16
B	SEE DETAIL	1
C	3/16 DIA	1

REQ. PER UNIT	USED ON			MS5112	D
	MODEL	ASS'Y. NO.	DATE		
1	VOX-7	BMA-114	5-1-67		
1	MMX-()				



MARK TMC P/N
1/8 HIGH GOTHIC W/LATEST
REV. LETTER



UNLESS OTHERWISE SPECIFIED:

1. USE MATERIAL THICKNESS FOR MAXIMUM RADIUS ON ALL BENDS
2. ALL ANGULAR BENDS 90 DEGREES
3. REMOVE ALL BURRS AND SHARP EDGES

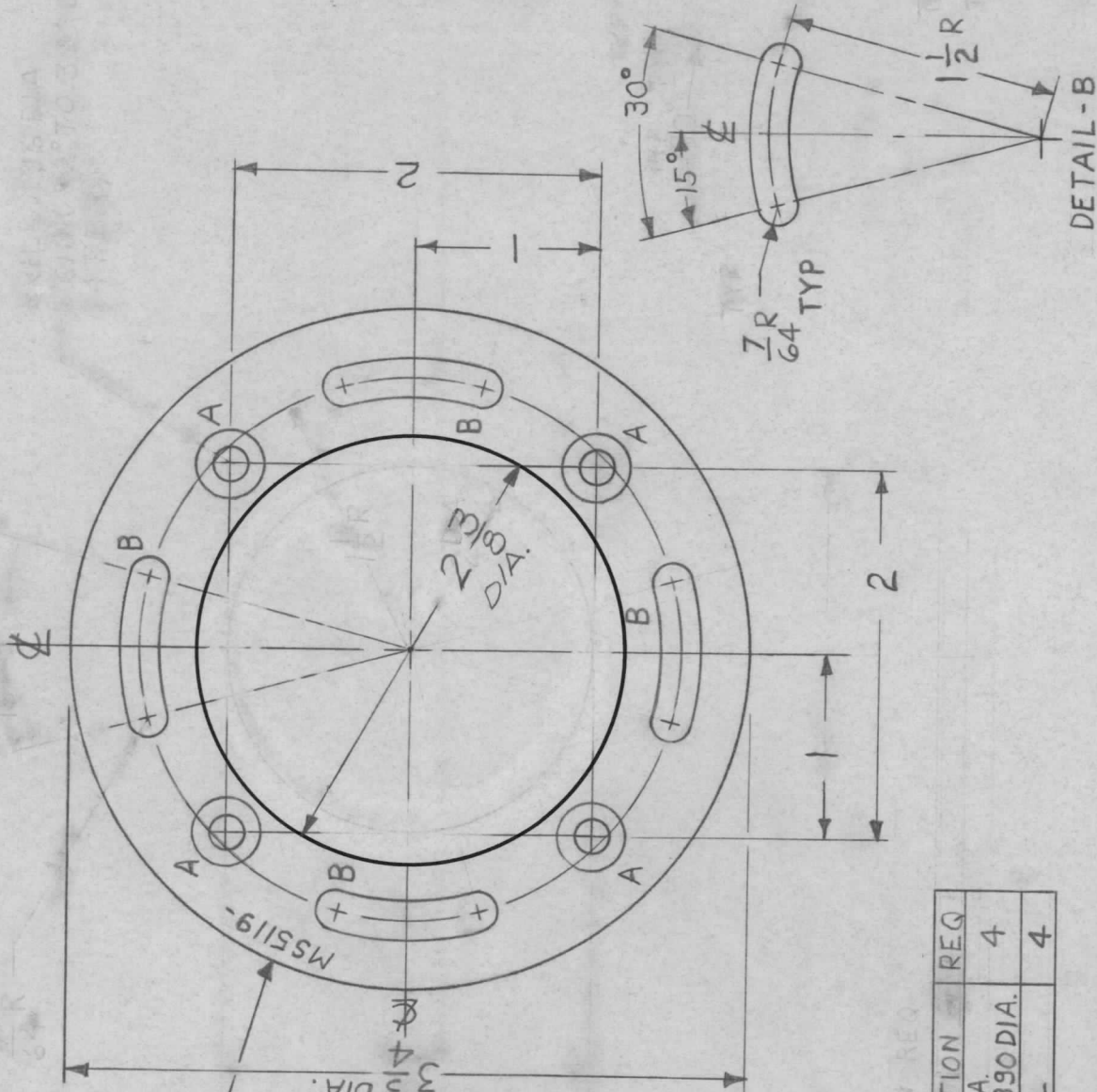
SYM	DESCRIPTION	DATE	CH. NO.	DRAFTS	CHECKER	ENG. APP.	REQ. ITEM	PART NO.	O. POSE	DESCRIPTION	SYMBOL	
D	ONE A HOLE ADD	4-13-78	21643	GDL				.063 THICK STOCK SIZE		THE TECHNICAL MATERIEL CORP. MAMARONECK, NEW YORK		
C	1-15/32 WAS 1-7/8 DIM	6.4.68	18955	HG				ALUMINUM		ANGLE, STIFFENER		
UNLESS OTHERWISE SPECIFIED DIMENSIONS ARE IN INCHES AND INCLUDE CHEMICALLY APPLIED OR PLATED FINISHES		SCALE		DO NOT SCALE			5052-H32		GDL			
DECIMALS .X ± .05 .XX ± .01 .XXX ± .005		FRACTIONS ± 1/64 ANGLES ± 0° 30'		CODE		5401-451	5404 YEL. IRIDITE					
TOLERANCES		A					FINISH & SPEC. NO.		ELEC. DES. APP.	MECH. DES. APP.	MS5112	D

APPLICATION

QTY	MODEL USED ON	ASSY NO.	LTR
1	TLAA-2.5K	AS128	X

REVISIONS

DESCRIPTION	DATE	E.M.N.NO	DRAFT	CHKD	APPD
EXPERIMENTAL RELEASE	5-26-67		L.A.K.		
ORIG. RELEASE FOR PROD.	6-1-67		RG		
2 3/8 WAS 2 DIMS 2	5-26-69	19470	GE		FB



MARK TMC P/N
1 HIGH GOTHIC
8 WITH LATEST
REV. LETTER

HOLE	DESCRIPTION	REQ
A	DRILL .196 DIA. CSINK 82° TO .390 DIA.	4
B	SEE DETAIL	4

REQ'D	ITEM	PART NUMBER	DESCRIPTION	SYM.
F.	BUDETTI		LIST OF MATERIAL	
<p>UNLESS OTHERWISE SPECIFIED DIMENSIONS ARE IN INCHES AND INCLUDE CHEMICALLY APPLIED OR PLATED FINISHES</p> <p>DECIMALS FRACTIONS X ± .05 TOLS. 1/64 .XX ± .01 ANGLES 0°-30' .XXX ± .005</p>				
MATERIAL 1/8 THK ALUM 5052-H32		THE TECHNICAL MATERIEL CORP. MAMARONECK, NEW YORK		
FINISH S404 YELLOW IRIDITE		PLATE, MOUNTING LEDEX		
FINAL APPROVAL	DATE	DATE	DATE	DATE
<i>FB</i>	5/26/67	5/26/67	5/26/67	5-26-67
MECH. DES.	<i>ad</i>			
ELECT. DES.				
CHECKED	<i>ML</i>			
DRAWN	L.A.K.			

SIZE	CODE IDENT. NO.	DWG NO.	ISSUE
A	82679	MS5119	A
SCALE 1:1	M/L <i>FB</i>	SHEET	OF

NOTICE TO PERSONS RECEIVING THIS DRAWING
THE TECHNICAL MATERIEL CORPORATION claims proprietary right in the material disclosed hereon. This drawing is issued in confidence for engineering information only and may not be reproduced or used to manufacture anything shown hereon without permission from THE TECHNICAL MATERIEL CORPORATION to the user. This drawing is loaned for mutual assistance and is subject to recall at any time.

HOLES

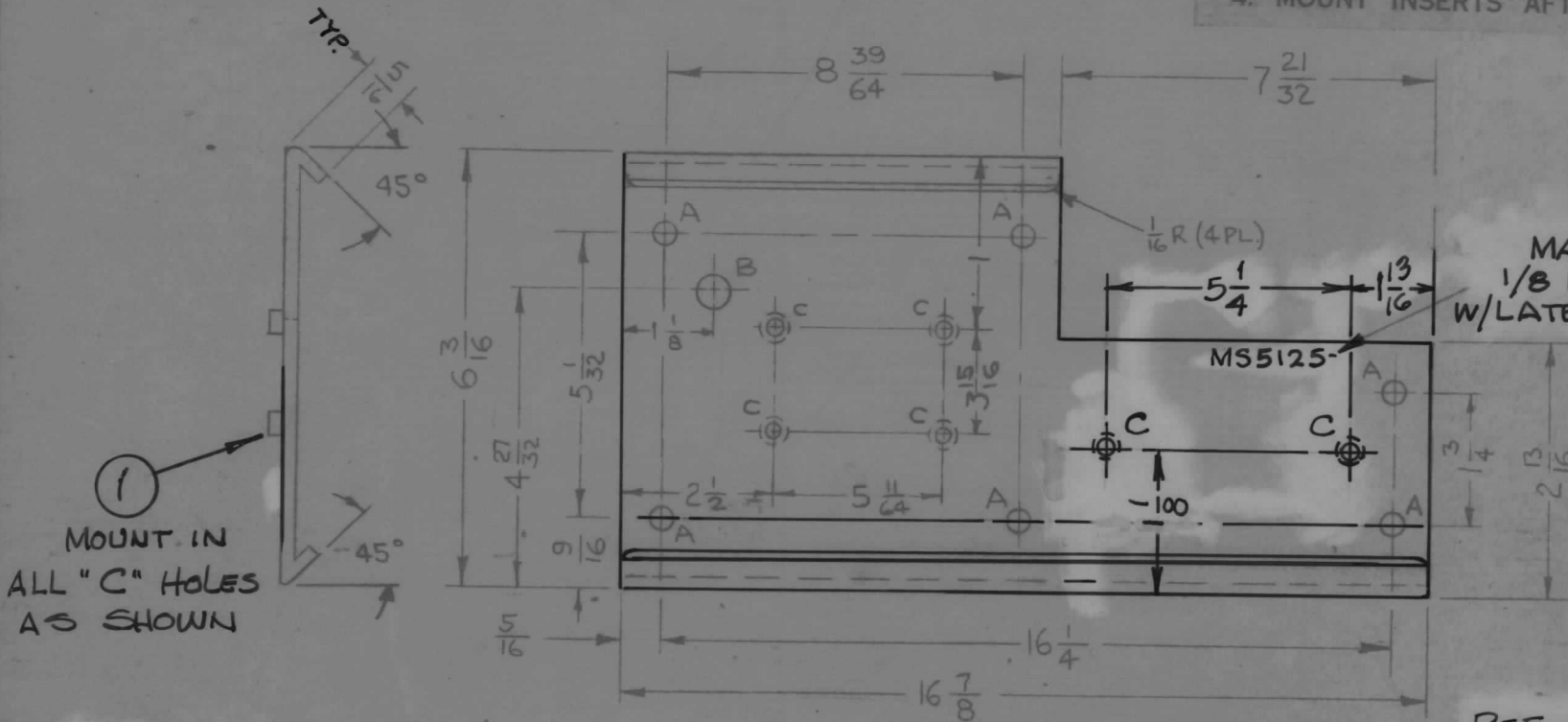
- A - 11/64 DIA - 6 REQ
- B - 7/8 DIA - 1 REQ
- C - .161 - .164 DIA - 6 REQ.

REQ. PER UNIT	USED ON		
	MODEL	ASS'Y. NO.	DATE
1	VLRC-1		7-13-67

MS5125 \emptyset

UNLESS OTHERWISE SPECIFIED:

1. USE MATERIAL THICKNESS FOR MAXIMUM RADIUS ON ALL BENDS
2. ALL ANGULAR BENDS 90 DEGREES
3. REMOVE ALL BURRS AND SHARP EDGES
4. MOUNT INSERTS AFTER FINISHING



1
MOUNT IN ALL "C" HOLES AS SHOWN

MARK TMC PT. NO. 1/8 HIGH GOTHIC, W/LATEST REV. LETTER.

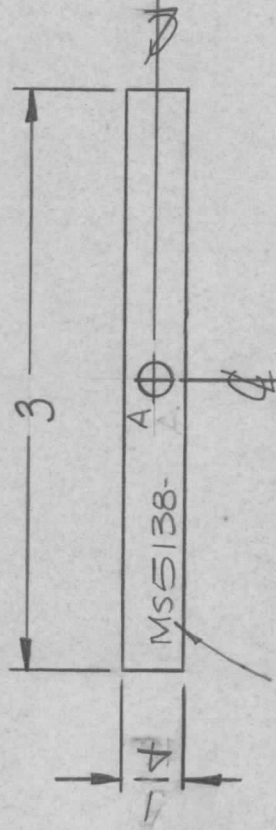
REF. LD 2229

				61	NT-129-440-4	NUT, PLN, SPLINE	C
				REQ. ITEM	PART NO.	A-MARTINENGO DESCRIPTION	SYMBOL
					.062	THE TECHNICAL MATERIEL CORP. MAMARONECK, NEW YORK	
					ALUMINUM	PLATE, REAR	
					5052-H32	HLD	
					S404 YEL. IRIDITE		
					FINISH & SPEC. 10.	ELEC. DES. APP.	MECH. DES. APP.
							MS5125 \emptyset
UNLESS OTHERWISE SPECIFIED DIMENSIONS ARE IN INCHES AND INCLUDE CHEMICALLY APPLIED OR PLATED FINISHES		SCALE					
DECIMALS .X \pm .05 .XX \pm .01 .XXX \pm .005		FRACTIONS \pm 1/64 ANGLES \pm 0° 30'		CODE	S401-451		
TOLERANCES		A					

APPLICATION

REVISIONS

QTY	MODEL USED ON	ASS'Y NO.	LTR	DESCRIPTION	DATE	E.M.N.NO	DRAFT	CHKD	APPD
1	LPA-2		X	EXP. RELEASE	7.11.67		L40		
			Ø	ORIG. RELEASE FOR PROD.	9-26-67	Ø	R.G.		file



MARK TMC P/N
1/8 HIGH GOTHIC
W/LATEST REV.
LETTER.

~ HOLE ~

A - 11/64 DIA (1 REQ)

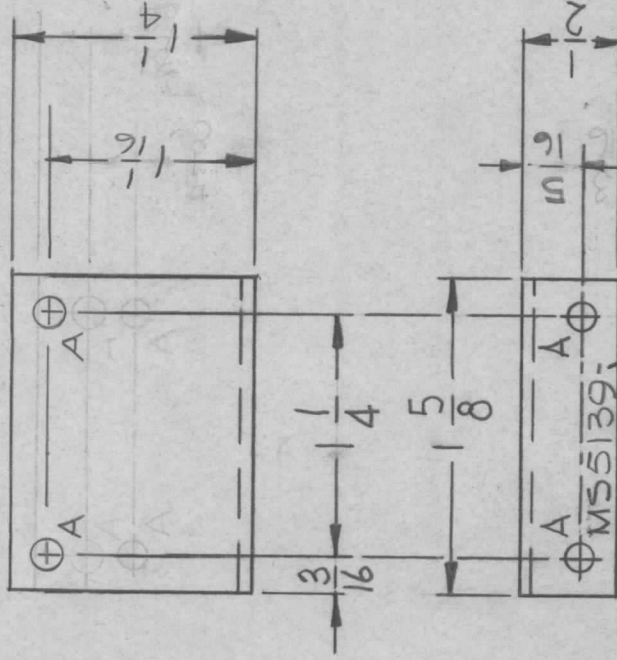
UNLESS OTHERWISE SPECIFIED DIMENSIONS ARE IN INCHES AND INCLUDE CHEMICALLY APPLIED OR PLATED FINISHES	REQ'D	ITEM	PART NUMBER	DESCRIPTION	SYM.
DECIMALS .X ± .05 .XX ± .01 .XXX ± .005				LIST OF MATERIAL	
FRACTIONS 1/64				SK 3240-10	
TOLS. ° .30				THE TECHNICAL MATERIEL CORP. MAMARONECK, NEW YORK	
MATERIAL 1/4 X 1/4 ALUM 2024-T3	FINAL APPROVAL	DATE			
FINISH S404 YEL. IRIDIUM	MECH DES	DATE			
5401-451	ELECT. DES.	DATE			
	CHECKED	DATE			
	DRAWN	DATE			
NOTICE TO PERSONS RECEIVING THIS DRAWING				BRACKET, SUPPORT, SWITCH	
THE TECHNICAL MATERIEL CORPORATION claims proprietary right in the material disclosed hereon. This drawing is issued in confidence for engineering information only and may not be reproduced or used to manufacture anything shown hereon without permission from THE TECHNICAL MATERIEL CORPORATION to the user. This drawing is loaned for mutual assistance and is subject to recall at any time.				SIZE A	ISSUE Ø
				CODE IDENT. NO. 82679	DWG NO. MS 5138
				SCALE 1:1	SHEET M/L 988 OF

APPLICATION

QTY	MODEL USED ON	ASSY NO.	LTR
1	LPA-2		X

REVISIONS

DESCRIPTION	DATE	E.M.N.NO	DRAFT	CHKD	APPD
EXP. RELEASE	7.11.67	-4-	LHW		
7.1" WAS 5/8 - 1/4 WAS 7/8	9/25/67		EMU		
Ø ORIG. RELEASE FOR PROD.	9-26-67	Ø	RG		
A 1-1/16 DIM. WAS 1	6.3.68	18947	LHW		



MARK TMC PT/No
1/8 HIGH GOTHIC W/LATEST
REVISION LETTER

HOLES;
A: 9/64 DIA. 4 REQ.

UNLESS OTHERWISE SPECIFIED:

1. USE MATERIAL THICKNESS FOR MAXIMUM RADIUS ON ALL BENDS
2. ALL ANGULAR BENDS 90 DEGREES
3. REMOVE ALL BURRS AND SHARP EDGES

UNLESS OTHERWISE SPECIFIED DIMENSIONS ARE IN INCHES AND INCLUDE CHEMICALLY APPLIED OR PLATED FINISHES	REQ'D	ITEM	PART NUMBER	DESCRIPTION	SYM.
DECIMALS .X ± .05 .XX ± .01 .XXX ± .005				LIST OF MATERIAL	
FRACTIONS 1/64				THE TECHNICAL MATERIEL CORP.	
ANGLES 0° .30°				MAMARONECK, NEW YORK	
MATERIAL, 062 ALUM. 5052-H32				BRACKET, MTG., LEDEX	
FINISH S404 YEL. IRIDITE					
S401-451					
FINAL APPROVAL DATE 7/11/67					
MECH. DES. DATE 8-31-67					
ELECT. DES. DATE 9/6					
CHECKED DATE 8-31-67					
DRAWN DATE 7.11.67					
F. BUDETTI				SK 3240-12	
CODE IDENT. NO. A 82679				DWG NO. MS 5139	ISSUE A
SCALE 1:1				SHEET 8/8	OF

NOTICE TO PERSONS RECEIVING THIS DRAWING
THE TECHNICAL MATERIEL CORPORATION claims proprietary right in the material disclosed hereon. This drawing is issued in confidence for engineering information only and may not be reproduced or used to manufacture anything shown hereon without permission from THE TECHNICAL MATERIEL CORPORATION to the user. This drawing is loaned for mutual assistance and is subject to recall at any time.

APPLICATION

QTY	MODEL USED ON	TMC PART NO.	ASS'Y NO.	LTR
2	RTH-3	MS5151-1		X
2	RTPH-3	MS5151-2		X1
2	RTMU-4	MS5151-2		X2
2	RTTD-5	MS5151-2		X3
2	SWCA-3K	MS5151-2		Ø

REVISIONS

DESCRIPTION	DATE	E.M.N.NO	DRAFT	CHKD	APPD
EXP. RELEASE	9-5-67		G.D.L.	MY	EE
RTTD-5 ADDED	8/4/68	-1-			
SWCA-3K ADDED	9/18/68	X 2			
SWCA-3K WAS MS5151-1	9/19/68	X 3			
ORIG. RELEASE FOR PROD.	11-20-68	Ø	R.G.		

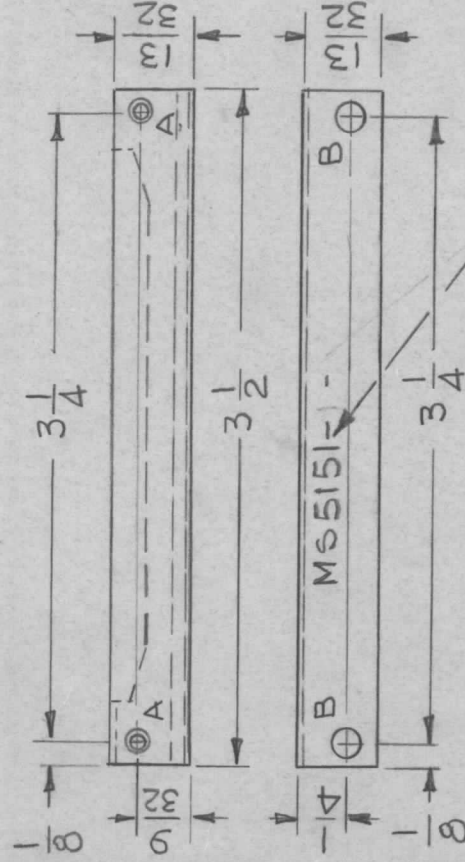
UNLESS OTHERWISE SPECIFIED:

1. USE MATERIAL THICKNESS FOR MAXIMUM RADIUS ON ALL BENDS
2. ALL ANGULAR BENDS 90 DEGREES
3. REMOVE ALL BURRS AND SHARP EDGES.
4. MOUNT INSERTS AFTER FINISHING

HOLE

A -.067 DIA 2 REQ.

B - 9/64 DIA 2 REQ.

MARK TMC P/No 1/8 HIGH
GOTHIC W/LATEST
REV. LETTER

① ② MOUNT
IN "A"
HOLES
AS SHOWN

① ② MOUNT IN
"A" HOLES
AS SHOWN

MS5151-1

MS5151-2

SEE APPLICATION
CHARTSEE APPLICATION
CHART

1EA	2	CU157-4	RETAINER PC BOARD	A
2EA	1	EY100-5	EYELET, MTL	A
REQ'D	ITEM	PART NUMBER	DESCRIPTION	SYM.

F. EATON

LIST OF MATERIAL SK3252-007-9

FINAL APPROVAL
J. De Marco 11/19/68

DATE

MECH. DES.

DATE

ELECT. DES.

DATE

CHECKED
J. De Marco 2/4/68

DATE

DRAWN
G.D.L.

DATE

UNLESS OTHERWISE SPECIFIED
DIMENSIONS ARE IN INCHES
AND INCLUDE CHEMICALLY APPLIED
OR PLATED FINISHESDECIMALS FRACTIONS
.X ± .05 1/64
.XX ± .01 ANGLES
.XXX ± .005 0° 30'MATERIAL .031 THK
ALUMINUM 5052-H32FINISH
S404 YEL. IRIDITE

S401 - 451

THE TECHNICAL MATERIEL CORP.

MAMARONECK, NEW YORK

BRACKET, MTG. RETAINER PC BD

NOTICE TO PERSONS RECEIVING THIS DRAWING

THE TECHNICAL MATERIEL CORPORATION claims proprietary right in the material disclosed hereon. This drawing is issued in confidence for engineering information only and may not be reproduced or used to manufacture anything shown hereon without permission from THE TECHNICAL MATERIEL CORPORATION to the user. This drawing is loaned for mutual assistance and is subject to recall at any time.

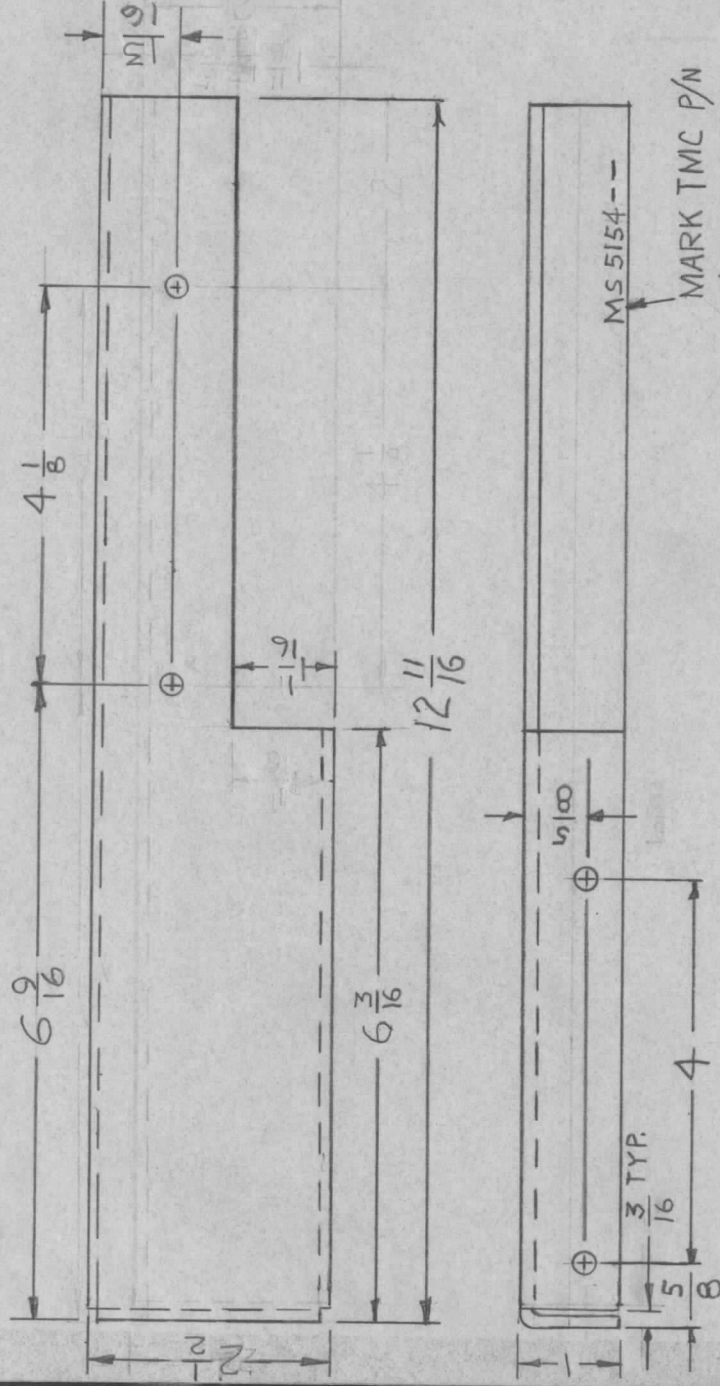
SIZE A	CODE IDENT. NO. 82679	DWG NO. MS5151-	ISSUE Ø
SCALE 1:1	SHEET	OF	

APPLICATION

QTY	MODEL USED ON	ASS'Y NO.	LTR	DESCRIPTION	DATE	E.M.N.NO	DRAFT	CHKD	APPD
1EA	GPT-40KEL		X	EXP RELEASE	9-7-67		HG		
			Ø	ORIG. RELEASE FOR PROD.	9-8-67	Ø	RG		
			A	2 1/2 WAS 2, 13/16 WAS 5/16	10.4.67	10533	H.G.		

REVISIONS

QTY	MODEL USED ON	ASS'Y NO.	LTR	DESCRIPTION	DATE	E.M.N.NO	DRAFT	CHKD	APPD
			X	EXP RELEASE	9-7-67		HG		
			Ø	ORIG. RELEASE FOR PROD.	9-8-67	Ø	RG		
			A	2 1/2 WAS 2, 13/16 WAS 5/16	10.4.67	10533	H.G.		



MS 5154-1	AS SHOWN (LEFT SIDE)
MS 5154-2	OPP HAND (RIGHT SIDE)

HOLE	DESCRIPTION	REQ'D
A	15/64 DIA.	4

UNLESS OTHERWISE SPECIFIED:

- USE MATERIAL THICKNESS FOR MAXIMUM RADIUS ON ALL BENDS
- ALL ANGULAR BENDS 90 DEGREES
- REMOVE ALL BURRS AND SHARP EDGES

UNLESS OTHERWISE SPECIFIED
DIMENSIONS ARE IN INCHES
AND INCLUDE CHEMICALLY APPLIED
OR PLATED FINISHES

DECIMALS	FRACTIONS
X ± .05	1/64
.XX ± .01	ANGLES
.XXX ± .005	0° .30'

MATERIAL 1/8 THK
ALUM 5052-H32

FINISH

S404 YEL IRIDITE

S401-451

REQ'D ITEM	PART NUMBER	DESCRIPTION	SYM.
------------	-------------	-------------	------

LIST OF MATERIAL

THE TECHNICAL MATERIEL CORP.
MAMARONECK, NEW YORK

BRACKET, SIDES

NOTICE TO PERSONS RECEIVING THIS DRAWING
THE TECHNICAL MATERIEL CORPORATION claims proprietary right in the material disclosed hereon. This drawing is issued in confidence for engineering information only and may not be reproduced or used to manufacture anything shown hereon without permission from **THE TECHNICAL MATERIEL CORPORATION** to the user. This drawing is loaned for mutual assistance and is subject to recall at any time.

SIZE	CODE IDENT. NO.	DWG NO.	ISSUE
A	82679	MS 5154-	A

SCALE	1:2	M/L	Ø	SHEET	OF
-------	-----	-----	---	-------	----

APPLICATION

QTY MODEL USED ON ASSY NO. LTR

1 BCT-10KA

X

EXP. RELEASE

DESCRIPTION

ORIGINAL RELEASE FOR PRODUCTION

DATE

9-29-67

E.M.N.NO

φ

DRAFT

H.G.

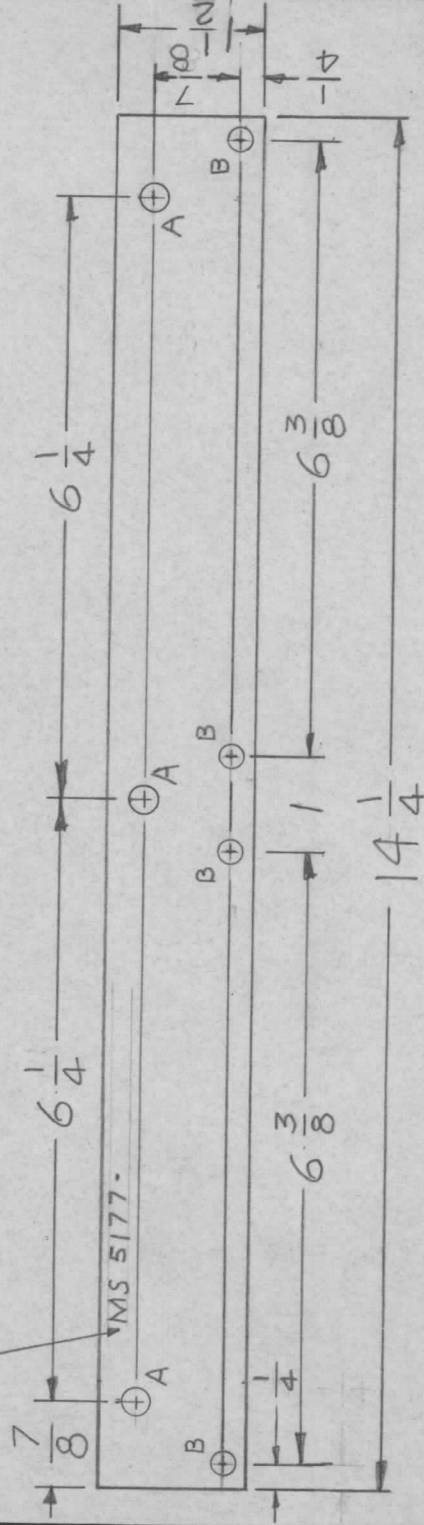
CHKD

H.G.

APPD

H.G.

MARK TMC P/N 1/8 GOTHIC
W/LATEST REV. LETTER.



① MOUNT IN ALL
"B" HOLES AFTER
FINISHING.

HOLE	DESCRIPTION	REQ'D
A	1/4 DIA	3
B	.221,224 DIA	4

4	1	NT129 832-6	NUT, PLAIN, SPLINE	B
REQ'D	ITEM	PART NUMBER	DESCRIPTION	SYM.
F. BUDETTI				
LIST OF MATERIAL				
THE TECHNICAL MATERIEL CORP. MAMARONECK, NEW YORK				
STRIP, MTG PLATE				
FINAL APPROVAL		DATE	DATE	
MECH. DES.		DATE	DATE	
ELECT. DES.		DATE	DATE	
CHECKED		DATE	DATE	
DRAWN		DATE	DATE	
MATERIAL 1/8 THK ALUM		5052-H32		
FINISH S404 YEL IRIDITE		S401-451		
SIZE	CODE IDENT. NO.	DWG NO.	ISSUE	
A	82679	MS 5177	φ	
SCALE	1:2	SHEET	OF	

NOTICE TO PERSONS RECEIVING THIS DRAWING

THE TECHNICAL MATERIEL CORPORATION claims proprietary right in the material disclosed hereon. This drawing is issued in confidence for engineering information only and may not be reproduced or used to manufacture anything shown hereon without permission from THE TECHNICAL MATERIEL CORPORATION to the user. This drawing is loaned for mutual assistance and is subject to recall at any time.

APPLICATION

QTY

MODEL USED ON

ASSY NO.

LTR

DESCRIPTION

DATE

E.M.N.NO

DRAFT

CHKD

APPD

1

RTPH-3

X

EXP. RELEASE

10-4-67

H.G.

SG

APPD

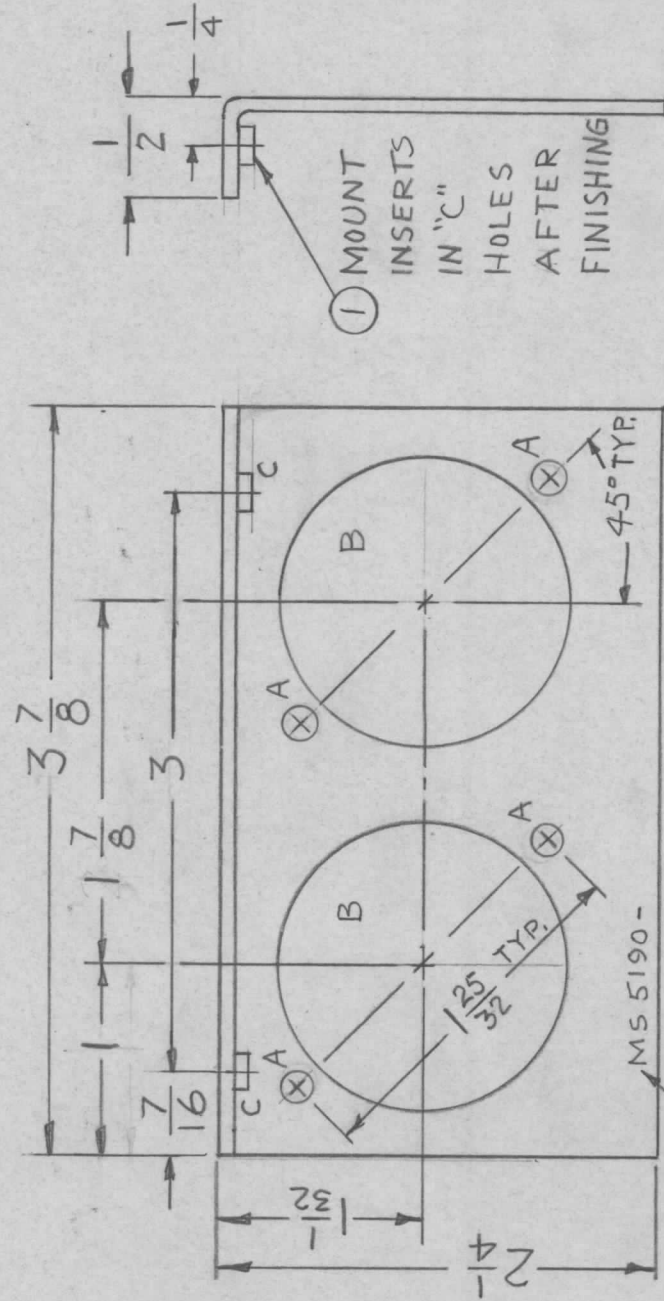
Ø

ORIG. RELEASE

12-3-68

SG

APPD



MARK TMC P/N 1/8 HIGH GOTHIC
W/LATEST REV. LETTER.

HOLE	DESCRIPTION	REQ.
A	11/64 DIA.	4
B	1-1/2 DIA	2
C	.191-.194 DIA	2

UNLESS OTHERWISE SPECIFIED:

1. USE MATERIAL THICKNESS FOR MAXIMUM RADIUS ON ALL BENDS
2. ALL ANGULAR BENDS 90 DEGREES
3. REMOVE ALL BURRS AND SHARP EDGES
4. MOUNT INSERTS AFTER FINISHING

REQ'D	ITEM	PART NUMBER	DESCRIPTION	SYM.
2	1	NT129-632-4	NUT, PLAIN, SPLINE	C

UNLESS OTHERWISE SPECIFIED

DIMENSIONS ARE IN INCHES

AND INCLUDE CHEMICALLY APPLIED

OR PLATED FINISHES

DECIMALS	FRACTIONS
.X ± .05	1/64
.XX ± .01	ANGLES
.XXX ± .005	0° .30'

MATERIAL.062THK ALUM

5052-H32

FINISH 5404 YEL

IRIDITE

S401-451

FINAL APPROVAL

DATE

MECH. DES.

DATE

ELECT. DES.

DATE

CHECKED

DATE

DRAWN

DATE

F. EANTON

DATE

DATE

DATE

DATE

DATE

LIST OF MATERIAL SK 3253-001-20

THE TECHNICAL MATERIEL CORP.

MAMARONECK, NEW YORK

BRACKET, MTG CAPACITORS

NOTICE TO PERSONS RECEIVING THIS DRAWING

THE TECHNICAL MATERIEL CORPORATION claims proprietary right in the material disclosed hereon. This drawing is issued in confidence for engineering information only and may not be reproduced or used to manufacture anything shown hereon without permission from THE TECHNICAL MATERIEL CORPORATION to the user. This drawing is loaned for mutual assistance and is subject to recall at any time.

SIZE

A

CODE IDENT. NO.

82679

DWG NO.

MS 5190

ISSUE

0

SCALE 1:1

M/L Allen-10/9/68

SHEET

OF

