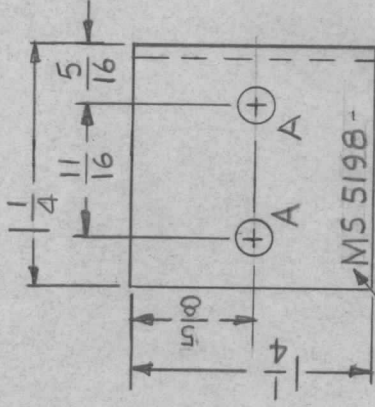


APPLICATION

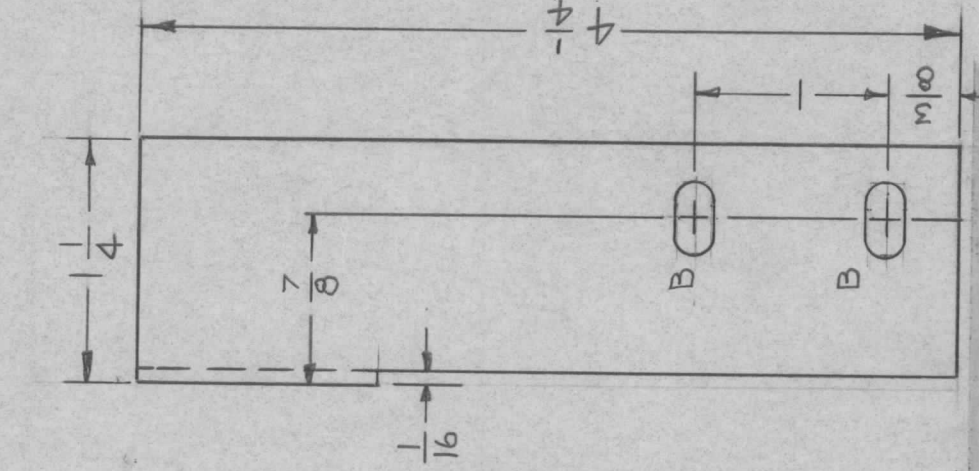
QTY	MODEL USED ON	ASS'Y NO.	LTR
1	GPT-10KLF E		X
1	GPT-10KRL		Ø

REVISIONS

DESCRIPTION	DATE	E.M.N.NO	DRAFT	CHKD	APPD
EXP. RELEASE	10-19-67		H.S.		
Ø ORIG. RELEASE FOR PROD.	2-13-69	Ø	RG		



MARK TMC P/N
 $\frac{1}{8}$ HIGH GOTHIC
 W/LATEST REV.
 LETTER.



HOLE	DESCRIPTION	REQ
A	11/64 DIA.	2
B	3/16 X 3/8 SLOT	2

UNLESS OTHERWISE SPECIFIED:

1. USE MATERIAL THICKNESS FOR MAXIMUM RADIUS ON ALL BENDS
2. ALL ANGULAR BENDS 90 DEGREES
3. REMOVE ALL BURRS AND SHARP EDGES

UNLESS OTHERWISE SPECIFIED
 DIMENSIONS ARE IN INCHES
 AND INCLUDE CHEMICALLY APPLIED
 OR PLATED FINISHES

DECIMALS
 X ± .05
 XX ± .01
 .XXX ± .005

FRACTIONS
 1/64
 ANGLES
 0° .30'

MATERIAL 064 THK, ALUM.
 5052 - H32

FINISH S404 YEL
 IRIDITE

S401-451

REQ'D ITEM	PART NUMBER	DESCRIPTION	SYMBOL
F. BUDETTI			
FINAL APPROVAL	<i>[Signature]</i>	DATE	
MECH. DES.	<i>[Signature]</i>	DATE	
ELECT. DES.		DATE	
CHECKED	<i>[Signature]</i>	DATE	
DRAWN	<i>[Signature]</i>	DATE	

LIST OF MATERIAL

THE TECHNICAL MATERIEL CORP.
 MAMARONECK, NEW YORK

BRACKET, MOUNTING, SWITCH

NOTICE TO PERSONS RECEIVING THIS DRAWING
 THE TECHNICAL MATERIEL CORPORATION claims proprietary right in the material disclosed hereon. This drawing is issued in confidence for engineering information only and may not be reproduced or used to manufacture anything shown hereon without permission from THE TECHNICAL MATERIEL CORPORATION to the user. This drawing is loaned for mutual assistance and is subject to recall at any time.

SIZE CODE IDENT. NO. DWG NO.

A 82679 MS 5198

SCALE 1:1 SHEET OF

ISSUE

1