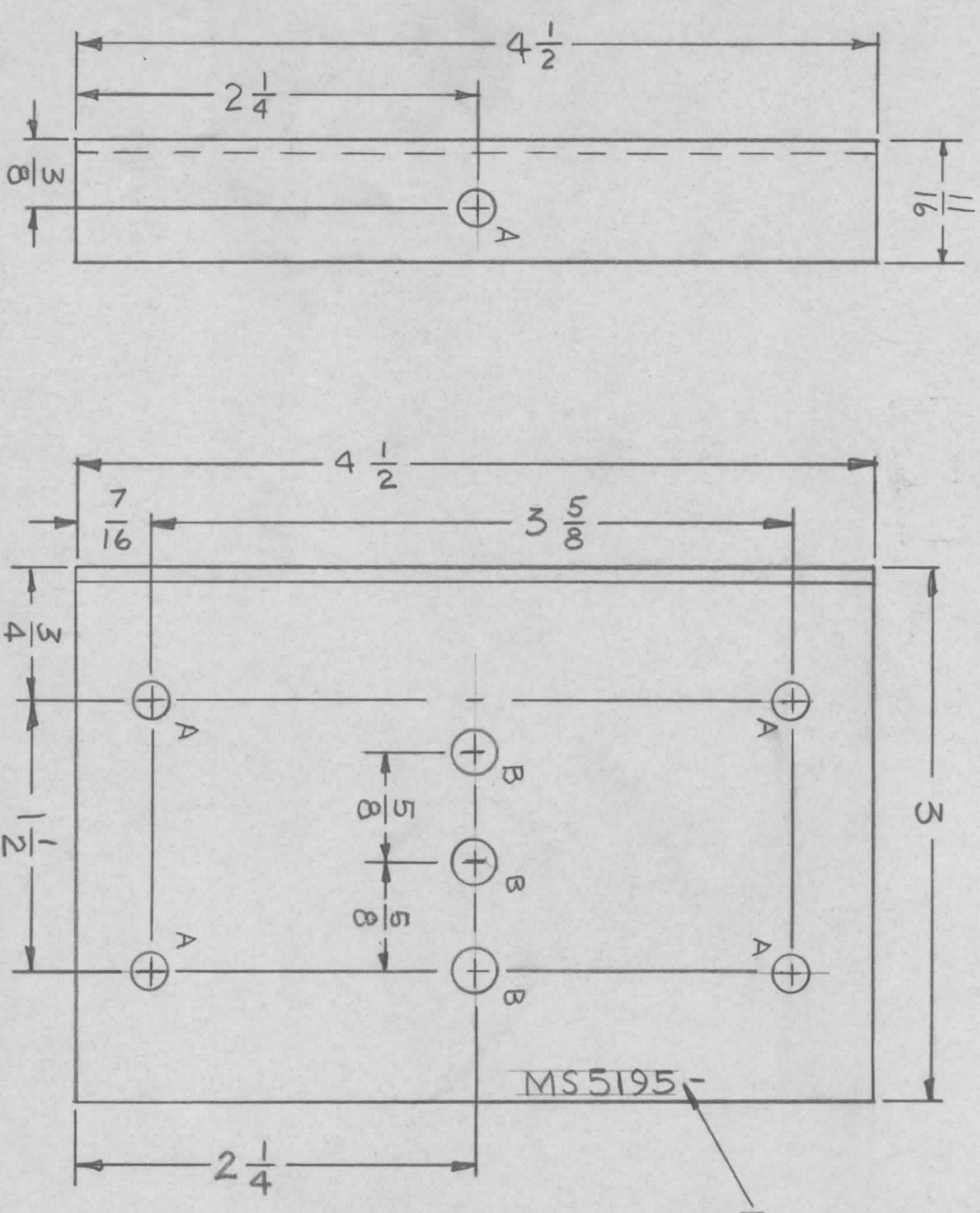


| REVISIONS |     |                        |          |            |       |      |
|-----------|-----|------------------------|----------|------------|-------|------|
| ZONE      | LTR | DESCRIPTION            | DATE     | E.M.N. NO. | DRAFT | CHKD |
| X         |     | EXP. RELEASE           | 11-14-67 |            | HE    |      |
| Ø         |     | ORIG. RELEASE FOR PROD | 2-19-69  |            | RG    |      |

|           |               |            |
|-----------|---------------|------------|
| MS 5195-1 | AS SHOWN      | RIGHT SIDE |
| MS 5195-2 | W/O "B" HOLES | LEFT SIDE  |

MARK TMC P/N 1/8" HIGH  
GOTHIC W/LATEST REV.  
LETTER.



| HOLE | DESCRIPTION | REQ |
|------|-------------|-----|
| A    | 13/64 DIA.  | 5   |
| B    | 1/4 DIA.    | 3   |

REF: LD2254

| REQ'D ITEM | PART NUMBER | DESCRIPTION      | SYM. |
|------------|-------------|------------------|------|
| F. BUDETTI |             | LIST OF MATERIAL |      |

THE TECHNICAL MATERIEL CORP.  
MAMARONECK, NEW YORK

PLATES, SIDE

| DATE    | DATE    | DATE     |
|---------|---------|----------|
| 2/18/69 | 2/19/69 | 11-14-67 |

| DECIMALS    | FRACTIONS |
|-------------|-----------|
| X ± .05     | 1/64      |
| .XX ± .01   | ANGLES    |
| .XXX ± .005 | 0° - 30'  |

| QTY / UNIT | MODEL USED ON | ASS'Y NO. |
|------------|---------------|-----------|
| 1          | GPT-10KLFEE   |           |
|            | APPLICATION   |           |
|            | CODE          | S401-451  |

- UNLESS OTHERWISE SPECIFIED:
1. USE MATERIAL THICKNESS FOR MAXIMUM RADIUS ON ALL BENDS
  2. ALL ANGULAR BENDS 90 DEGREES
  3. REMOVE ALL BURRS AND SHARP EDGES

NOTICE TO PERSONS RECEIVING THIS DRAWING  
THE TECHNICAL MATERIEL CORPORATION claims proprietary right in the material disclosed hereon. This drawing is issued in confidence for engineering information only and may not be reproduced or used to manufacture anything shown hereon without permission from THE TECHNICAL MATERIEL CORPORATION to the user. This drawing is loaned for mutual assistance and is subject to recall at any time.

UNLESS OTHERWISE SPECIFIED  
DIMENSIONS ARE IN INCHES  
AND INCLUDE CHEMICALLY APPLIED  
OR PLATED FINISHES

| FINAL APPROVAL | MECH. DES. | ELECT. DES. | CHECKED | DRAWN | DATE | DATE | DATE | DATE | DATE |
|----------------|------------|-------------|---------|-------|------|------|------|------|------|
|                |            |             |         |       |      |      |      |      |      |

| SIZE | CODE IDENT. NO. | DWG NO. | ISSUE |
|------|-----------------|---------|-------|
| B    | 82679           | MS 5195 |       |