

## APPLICATION

QTY 1

MODEL USED ON

RTPH-3

LTR X

EXP. RELEASE

## REVISIONS

CHKD

DRAFT

E.M.N.NO

DATE

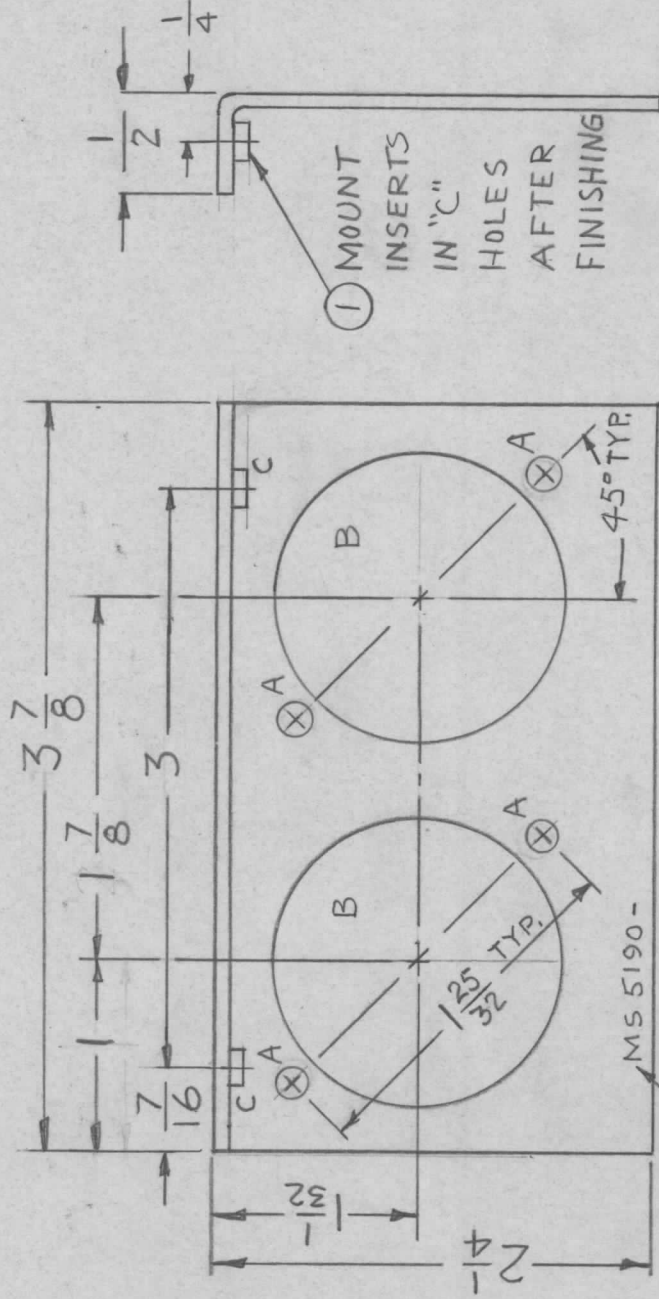
APPD

10-4-67

H.G.

12-3-68

Ø ORIG. RELEASE



MARK TMC P/N 1/8 HIGH GOTHIC  
W/LATEST REV. LETTER.

| HOLE | DESCRIPTION   | REQ. |
|------|---------------|------|
| A    | 11/64 DIA.    | 4    |
| B    | 1-1/2 DIA     | 2    |
| C    | .191-.194 DIA | 2    |

## UNLESS OTHERWISE SPECIFIED:

1. USE MATERIAL THICKNESS FOR MAXIMUM RADIUS ON ALL BENDS
2. ALL ANGULAR BENDS 90 DEGREES
3. REMOVE ALL BURRS AND SHARP EDGES
4. MOUNT INSERTS AFTER FINISHING

| REQ'D                                    | ITEM            | PART NUMBER   | DESCRIPTION        | SYM. |
|--|-----------------|---|--------------------|------|
| 2  | 1               | NT129-632-4   | NUT, PLAIN, SPLINE | C    |
| F. EANTON                                |                 |   |                    |      |
| FINAL APPROVAL                           |                 |   | DATE               |      |
| <i>[Signature]</i>                       |                 |   | 12/3/68            |      |
| MECH. DES.                               |                 |   | DATE               |      |
| <i>[Signature]</i>                       |                 |   | 10/4/67            |      |
| ELECT. DES.                              |                 |   | DATE               |      |
| <i>[Signature]</i>                       |                 |   | 10-4-67            |      |
| DRAWN                                    |                 |   | H.G.               |      |
| LIST OF MATERIAL SK 3253-001-20          |                 |   |                    |      |
| THE TECHNICAL MATERIEL CORP.             |                 |   |                    |      |
| MAMARONECK, NEW YORK                     |                 |   |                    |      |
| BRACKET, MTG CAPACITORS                  |                 |   |                    |      |
| NOTICE TO PERSONS RECEIVING THIS DRAWING |                 | THE TECHNICAL MATERIEL CORPORATION claims proprietary right in the material disclosed hereon. This drawing is issued in confidence for engineering information only and may not be reproduced or used to manufacture anything shown hereon without permission from THE TECHNICAL MATERIEL CORPORATION to the user. This drawing is loaned for mutual assistance and is subject to recall at any time. |                    |      |
| SIZE                                     | CODE IDENT. NO. | DWG NO.   | ISSUE              |      |
| A  | 82679           | MS 5190   | 0                  |      |
| SCALE                                    | 1:1             | M/L Allen-10/9/68   | SHEET              | OF   |