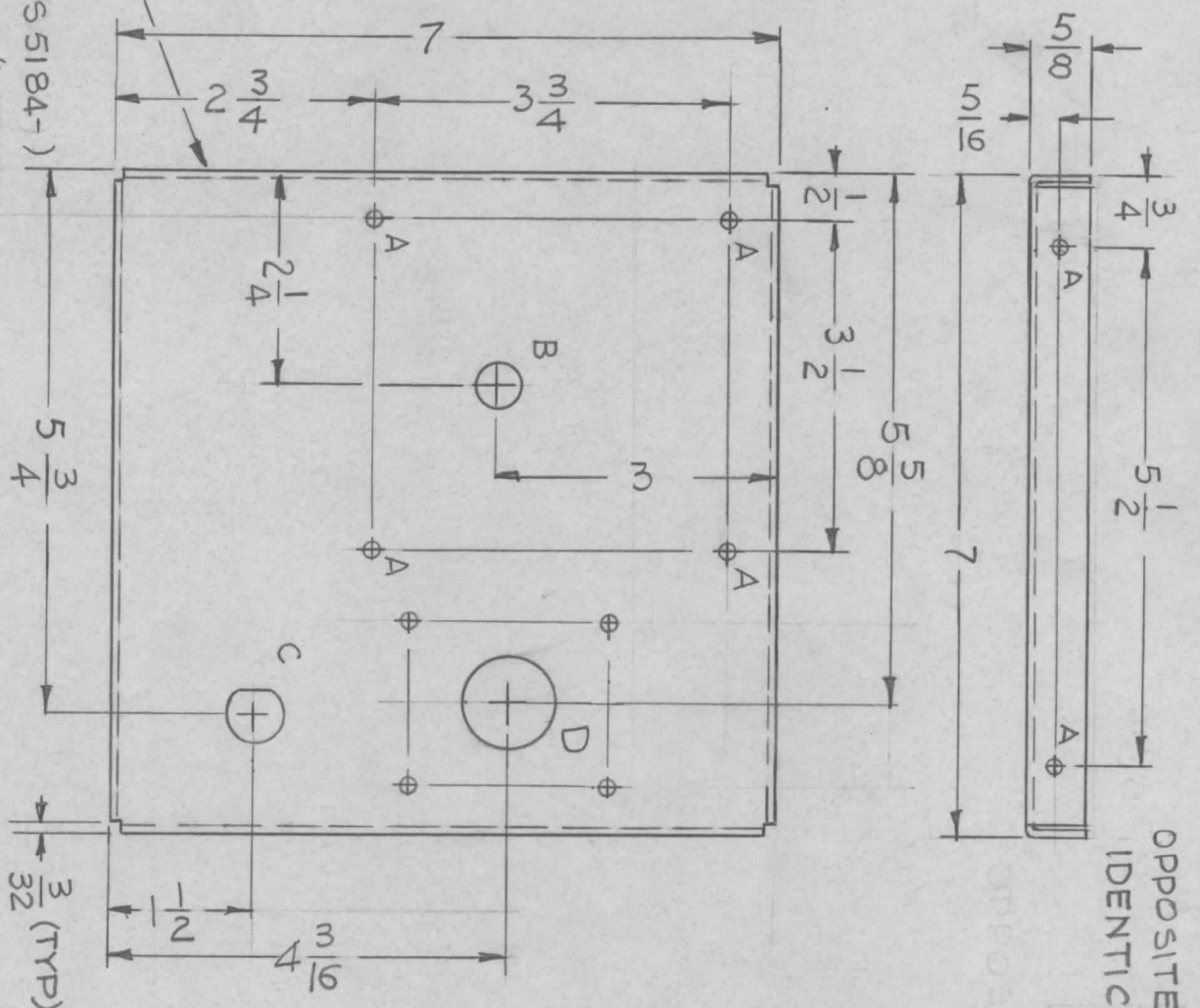


REVISIONS							
ZONE	LTR	DESCRIPTION	DATE	E.M.N.NO	DRAFT	CHKD	APPD
X		EXP. RELEASE	10-5-67		G.D.L.		
Ø		ORIGINAL RELEASE FOR PRODUCTION	4/1/68		Ø		

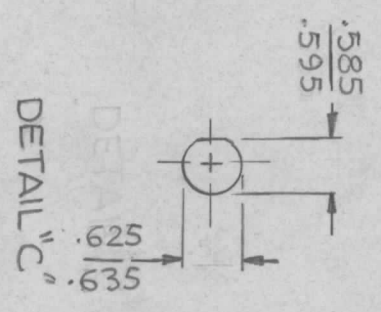
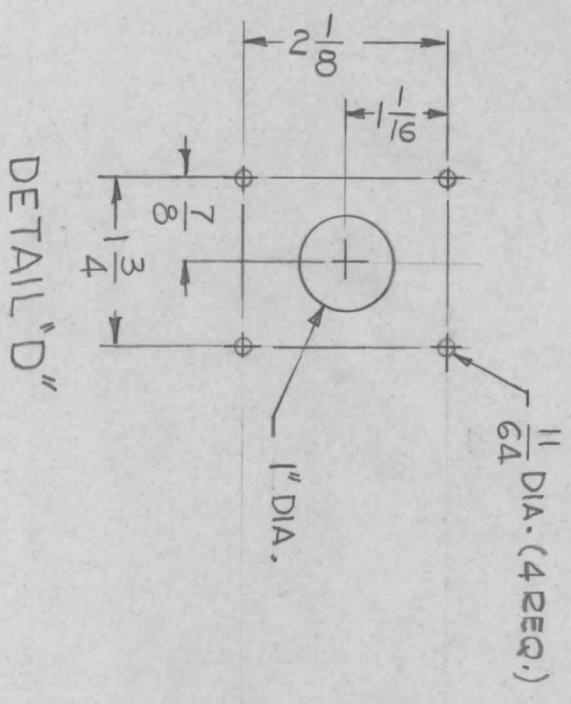
OPPOSITE SIDE IDENTICAL

HOLE	DESCRIPTION	REQ
A	11/64 DIA	8
B	1/2 DIA	1
C	SEE DETAIL	1
D	SEE DETAIL	1



MARK TMC P/NO (MS 5184-1)
 1/8" HIGH GOTHIC W/LATEST REVISION LETTER

- UNLESS OTHERWISE SPECIFIED:
1. USE MATERIAL THICKNESS FOR MAXIMUM RADIUS ON ALL BENDS
 2. ALL ANGULAR BENDS 90 DEGREES
 3. REMOVE ALL BURRS AND SHARP EDGES
 4. MOUNT INSERTS AFTER FINISHING



QTY / UNIT	1	MODEL USED ON	BCT10KA	ASS'Y NO.	
APPLICATION		CODE	A	5401-451	

UNLESS OTHERWISE SPECIFIED DIMENSIONS ARE IN INCHES AND INCLUDE CHEMICALLY APPLIED OR PLATED FINISHES

DECIMALS	FRACTIONS
.X ± .05	1/64
.XX ± .01	ANGLES
.XXX ± .005	0° .30'

MATERIAL: .063 THK ALUMINUM 5052-H32
 FINISH: 5404 YEL. IRIDITE

REQ'D ITEM	PART NUMBER	DESCRIPTION	SYM.
F. BUDETTI		LIST OF MATERIAL	SK 3290-MS2023
THE TECHNICAL MATERIEL CORP. MAMARONECK, NEW YORK CHASSIS, PS., LFE DRAWER			
FINAL APPROVAL	DATE		
Mech. Des.	4-1-68		
ELECT. DES.	DATE		
Checked	DATE		
G.D.L.	10-5-67		
DRAWN	DATE		
G.D.L.	10-5-67		
SIZE	CODE IDENT. NO.	DWG NO.	ISSUE
B	82679	MS 5184	Ø
SCALE	1:2	SHEET	OF