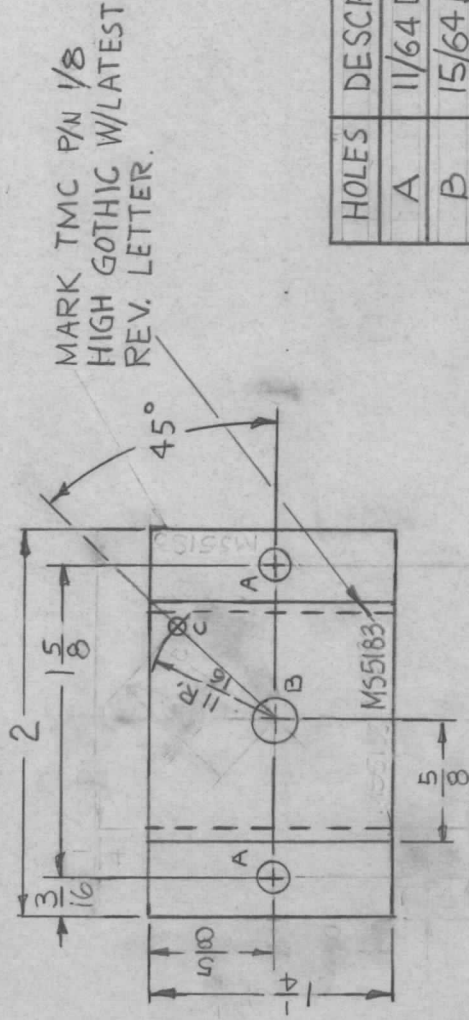


APPLICATION

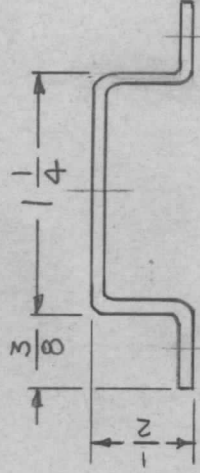
QTY	MODEL USED ON	ASS'Y NO.	LTR
1	RTMU-4		X
1	RTIH-3		X1
			Ø

REVISIONS

DESCRIPTION	DATE	E.M.N.NO	DRAFT	CHKD	APPD
EXP RELEASE	9-14-67		H.G		FE
RTIH-3 ADDED	11-10-67		H.G		FE
Ø ORIG RELEASE	12-3-68	Ø	K.H		H.D



HOLES	DESCRIPTION	REQ.
A	11/64 DIA.	2
B	15/64 DIA.	1
C	.078 DIA. DRILL #47	1



UNLESS OTHERWISE SPECIFIED:

1. USE MATERIAL THICKNESS FOR MAXIMUM RADIUS ON ALL BENDS
2. ALL ANGULAR BENDS 90 DEGREES
3. REMOVE ALL BURRS AND SHARP EDGES

UNLESS OTHERWISE SPECIFIED DIMENSIONS ARE IN INCHES AND INCLUDE CHEMICALLY APPLIED OR PLATED FINISHES

DECIMALS  
X ± .05  
.XX ± .01  
.XXX ± .005

FRACTIONS  
1/64  
ANGLES  
0°-30°

MATERIAL: 051 ALUM.

5052-H32

FINISH

S404 YEL IRIDITE

S401-451

REQ'D ITEM PART NUMBER

F.EATON

DESCRIPTION SK-3253-001-8 SYM.

LIST OF MATERIAL

FINAL APPROVAL <i>S. De Marco</i>	DATE 12/3/68
MECH. DES.	DATE
ELECT. DES.	DATE
CHECKED SG	DATE 11/10/67
DRAWN H.G	DATE 9/14/67

THE TECHNICAL MATERIEL CORP.

MAMARONECK, NEW YORK

BRACKET, MTG BRIDGE

NOTICE TO PERSONS RECEIVING THIS DRAWING

THE TECHNICAL MATERIEL CORPORATION claims proprietary right in the material disclosed hereon. This drawing is issued in confidence for engineering information only and may not be reproduced or used to manufacture anything shown hereon without permission from THE TECHNICAL MATERIEL CORPORATION to the user. This drawing is loaned for mutual assistance and is subject to recall at any time.

SIZE

A

CODE IDENT. NO.

MS5183

DWG NO.

ISSUE

Ø

SCALE

SHEET

OF