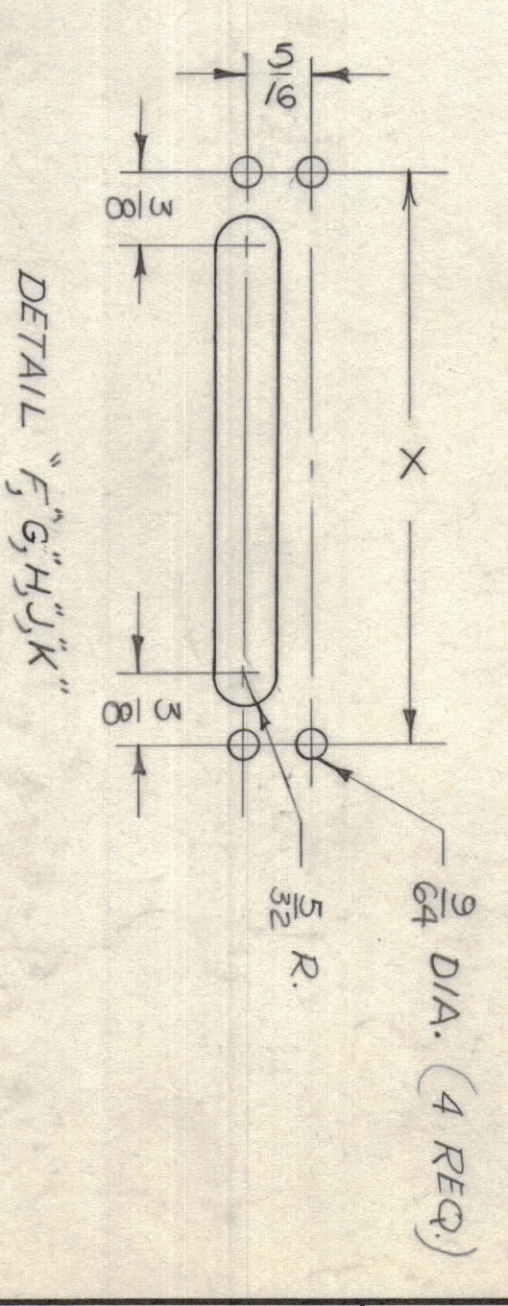
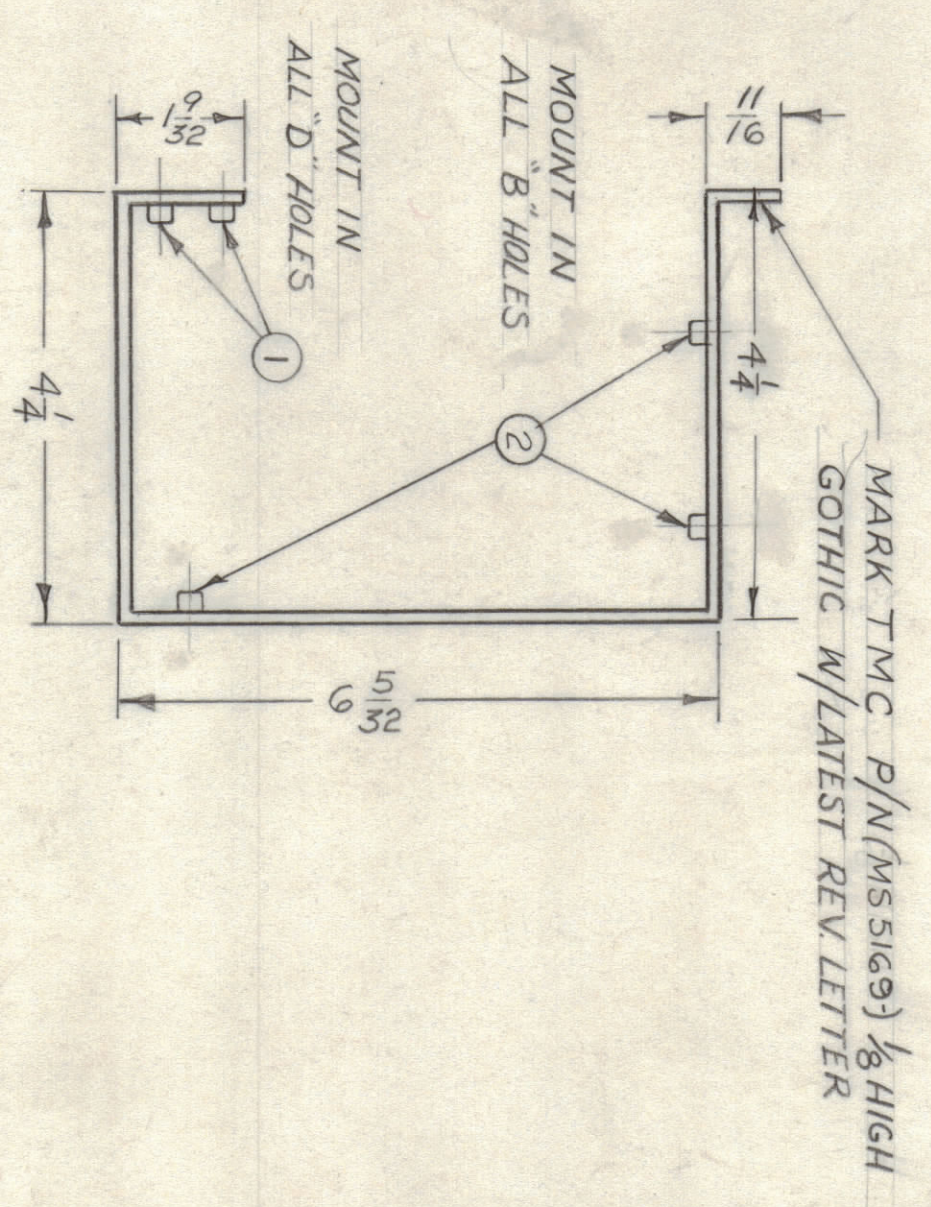
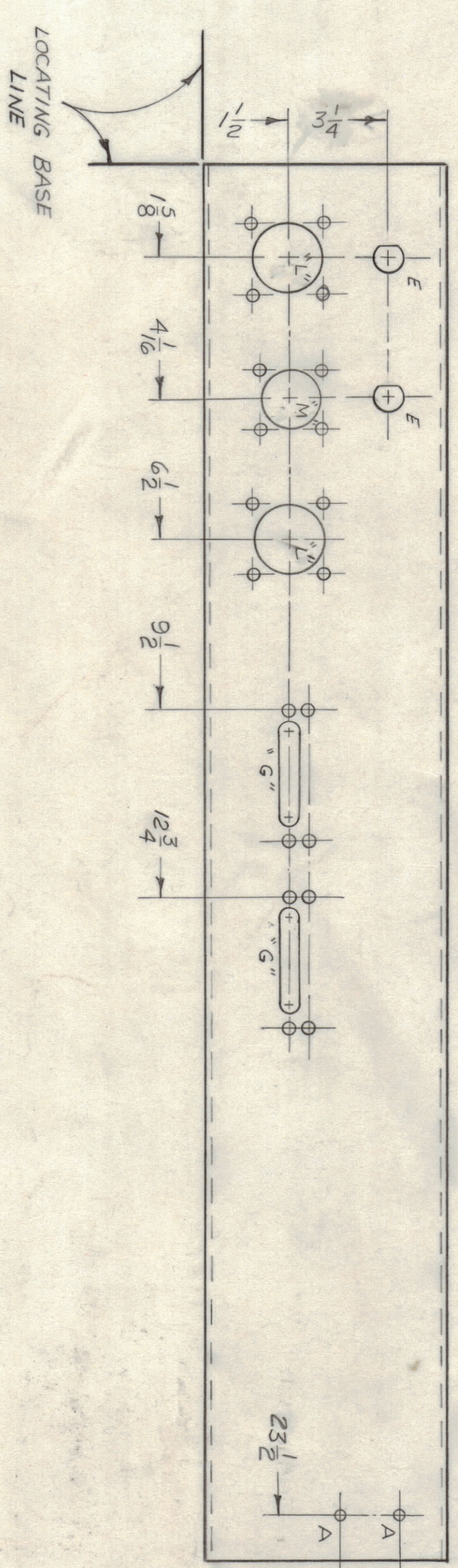
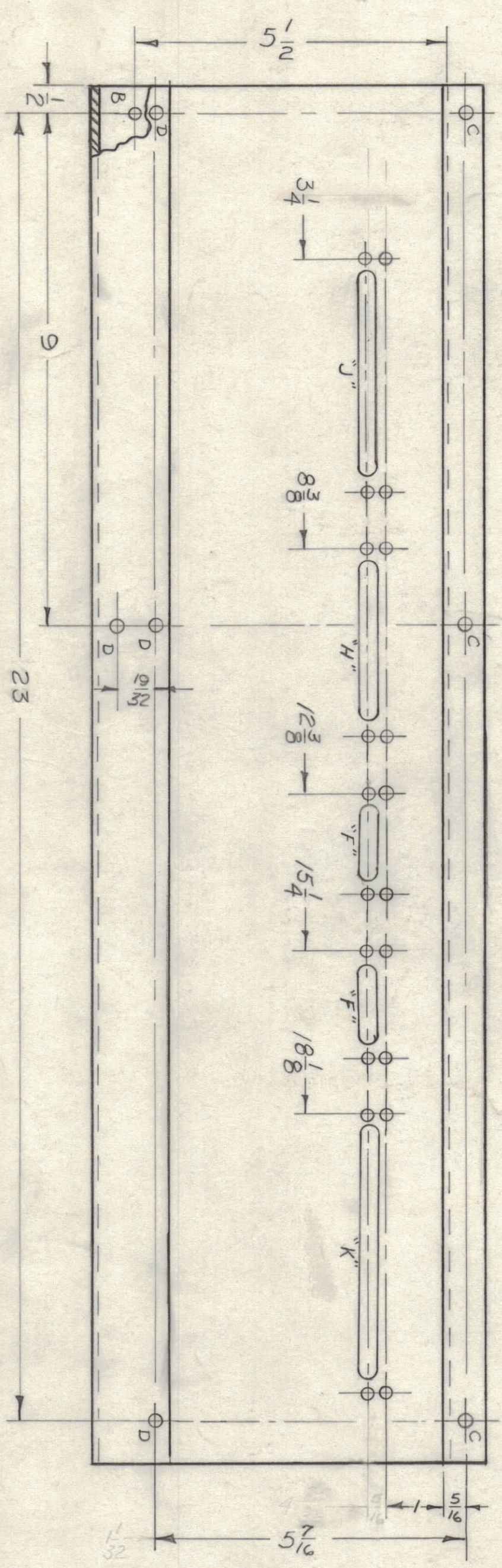
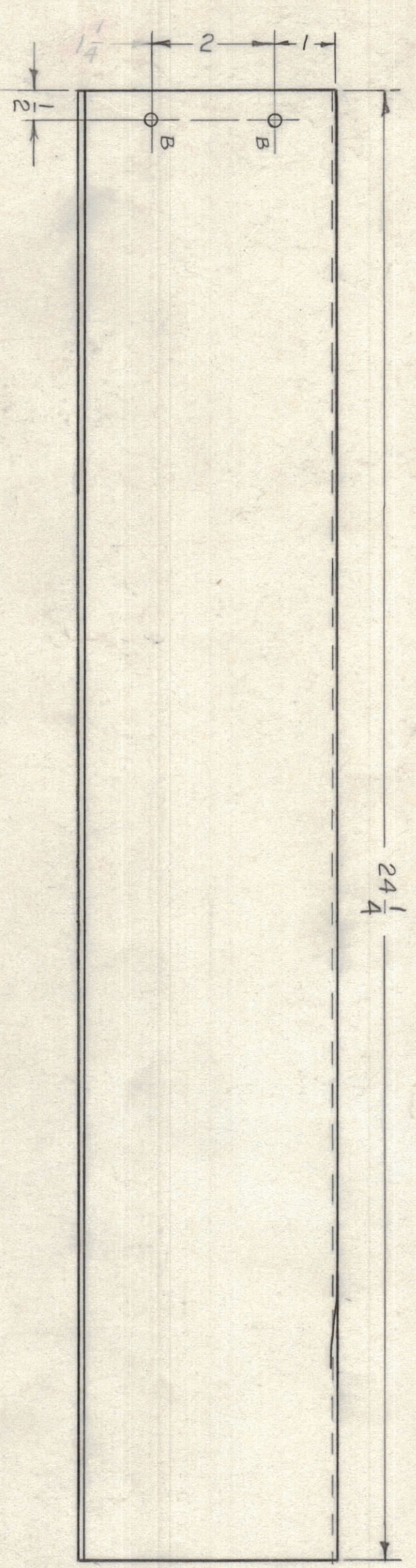
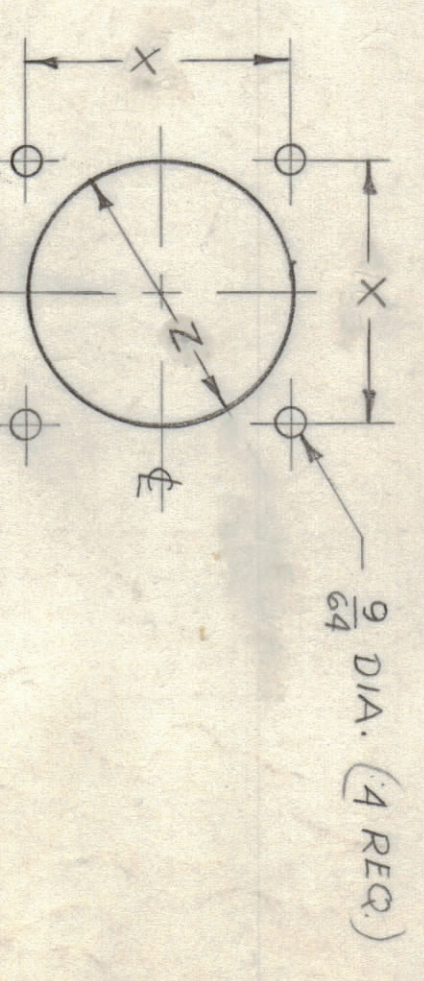


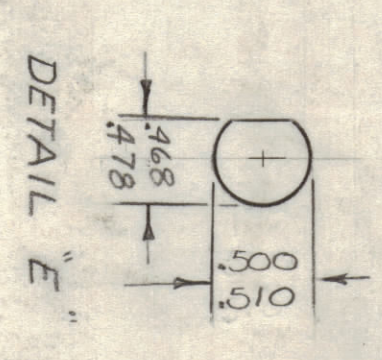
HOLE	DESCRIPTION	REQ.
A	1/4 DIA.	2
B	1/91 - .194 DIA.	3
C	1/2 DIA.	3
D	.221 - .224 DIA.	4
E	SEE DETAIL	2
F		2
G		2
H		1
J		1
K		1
L		1
M	SEE DETAIL	2



DETAIL	X
F	1 1/8
G	2 1/4
H	3
J	4 1/8
K	4 7/8



DETAIL	X	Z
M	3 1/32	1 1/8 DIA.
L	1 3/32	1 3/8 DIA.



REF: LD 2248

UNLESS OTHERWISE SPECIFIED DIMENSIONS ARE IN INCHES OR PLATED FINISHES

TOLERANCES ON

DECIMALS ± .05
FRACTIONS ± 1/64
ANGLES ± 0° - 30'

MATERIAL: 6064 ALUMINUM
FINISH: S404 YELLOW IRIDITE

NOTICE TO PERSONS RECEIVING THIS DRAWING: THE TECHNICAL MATERIEL CORPORATION claims proprietary right in the material disclosed herein. This drawing is issued in confidence for engineering information only and may not be reproduced or used in any way without the express written consent of the Technical Materiel Corporation. This drawing is loaned for mutual assistance and is subject to recall at any time.

QTY	ITEM	PART NO.	DESCRIPTION	SYMBOL
3	2	NT129-632-4	NUT, PLAIN SPLINE	B
4	1	NT129-832-4	NUT, PLAIN SPLINE	D

LIST OF MATERIAL

THE TECHNICAL MATERIEL CORP.
MAHARONECK, NEW YORK

PANEL, INTERFACE

SIZE CODE	IDENT NO.	DWG NO.	ISSUE
D	82679	MS 5169	1

QTY / UNIT	MODEL USED ON	ASSY NO.
1	BCT10KA	

UNLESS OTHERWISE SPECIFIED:
1. USE MATERIAL THICKNESS FOR MAXIMUM RADIUS ON ALL BENDS
2. ALL ANGULAR BURNS 90 DEGREES
3. REMOVE ALL BURRS AND SHARP EDGES
4. MOUNT INSERTS AFTER FINISHING