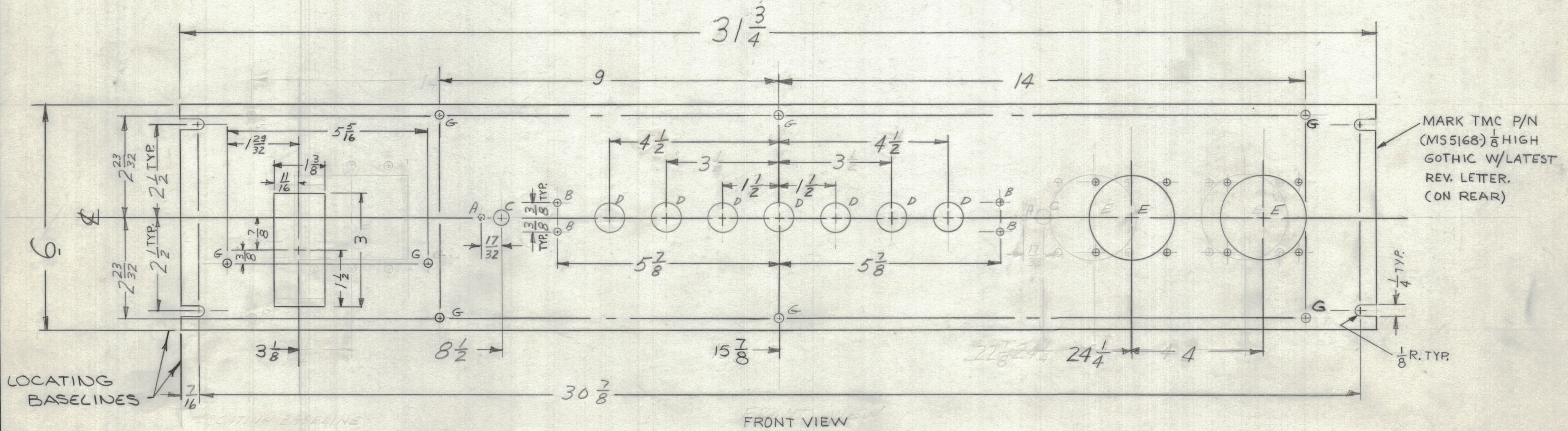


ENGINEERING SKETCH NOT FOR PRODUCTION

| REVISIONS | | | | | | | |
|-----------|-----|---------------------------------------|----------|----------|-------|------|------|
| ZONE | LTR | DESCRIPTION | DATE | E.M.N.NO | DRAFT | CHKD | APPD |
| | X3 | 1" DET. DELE. ADD 2 HOLES. ADD CUTOUT | 6 Nov 67 | - | MS | MS | MS |
| | X4 | COMPLETELY REVISED | 11-20-67 | + | MS | MS | MS |
| | Ø | ORIGINAL RELEASE FOR PRODUCTION | 4-1-68 | Ø | MS | MS | MS |



MARK TMC P/N (MS5168) 1/8 HIGH GOTHIC W/LATEST REV. LETTER. (ON REAR)

LOCATING BASELINES

FRONT VIEW

| HOLE | DESCRIPTION | REQ |
|------|---|-----|
| A | 1/8 DIA C ³ BORE 1/16 DP FROM REAR | 1 |
| B | 1/64 DIA | 4 |
| C | 3/8 DIA | 1 |
| D | 3/4 DIA | 7 |
| E | SEE DETAIL | 2 |
| G | 13/64 DIA | 8 |

MACHINING:

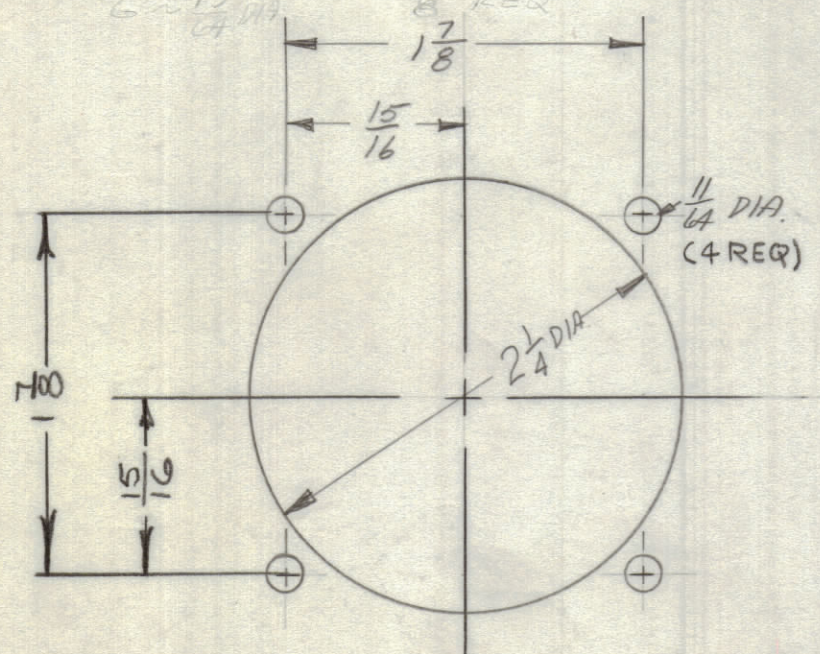
- MILL ALL EDGES.
- HOLES MUST BE DRILLED, UNLESS OTHERWISE SPECIFIED.
- LATERAL BOW OF PANEL MUST BE KEPT TO .031 TOLERANCE.
- PANEL MUST BE FREE OF ALL MACHINING MARKS, GOUGES AND SCRATCHES. IF NECESSARY, SAND FRONT OF PANEL WITH NO. 120 GRIT SANDPAPER.

FINISH NOTES:

- S404 - IRIDITE 14-2 AL-COAT.
- S114 - ZINC CHROMATE PRIMER } FRONT AND
- S115 - SMOOTH GRAY ENAMEL } EDGES ONLY

OR
PRIME AND PAINT PER CUSTOMER'S SPECIFICATIONS.

Handwritten notes:
 All 1/8 DIA. STABE FROM REAR TO DEEP 1 REQ
 B = 1/64 DIA 4 REQ
 C = 3/8 DIA 1 REQ
 D = 3/4 DIA 7 REQ
 G = 13/64 DIA 8 REQ



E-DETAIL

| | | |
|-------------|---------------|-----------|
| 1 | BCT-10KA | |
| QTY / UNIT | MODEL USED ON | ASS'Y NO. |
| APPLICATION | | |
| | CODE A | S401-451 |

NOTICE TO PERSONS RECEIVING THIS DRAWING
 THE TECHNICAL MATERIEL CORPORATION claims proprietary right in the material disclosed hereon. This drawing is issued in confidence for engineering information only and may not be reproduced or used to manufacture anything shown hereon without permission from THE TECHNICAL MATERIEL CORPORATION to the user. This drawing is loaned for mutual assistance and is subject to recall at any time.

REF: LD 2249

| QTY. REQ. | ITEM | PART NO. | DESCRIPTION | SYMBOL |
|--|------|----------|------------------------------|----------|
| BODETTI LIST OF MATERIAL SK3290-MS1003 | | | | |
| THE TECHNICAL MATERIEL CORP. MAMARONECK, NEW YORK | | | | |
| PANEL, CONTROL, MAIN | | | | |
| MATERIAL 1/8 ALUMINUM 2024 T3 | | | SIZE CODE IDENT. NO. DWG NO. | ISSUE |
| FINISH SEE NOTES | | | C 82679 MS5168 | Ø |
| | | | SCALE 1:2 | SHEET OF |

MS5168