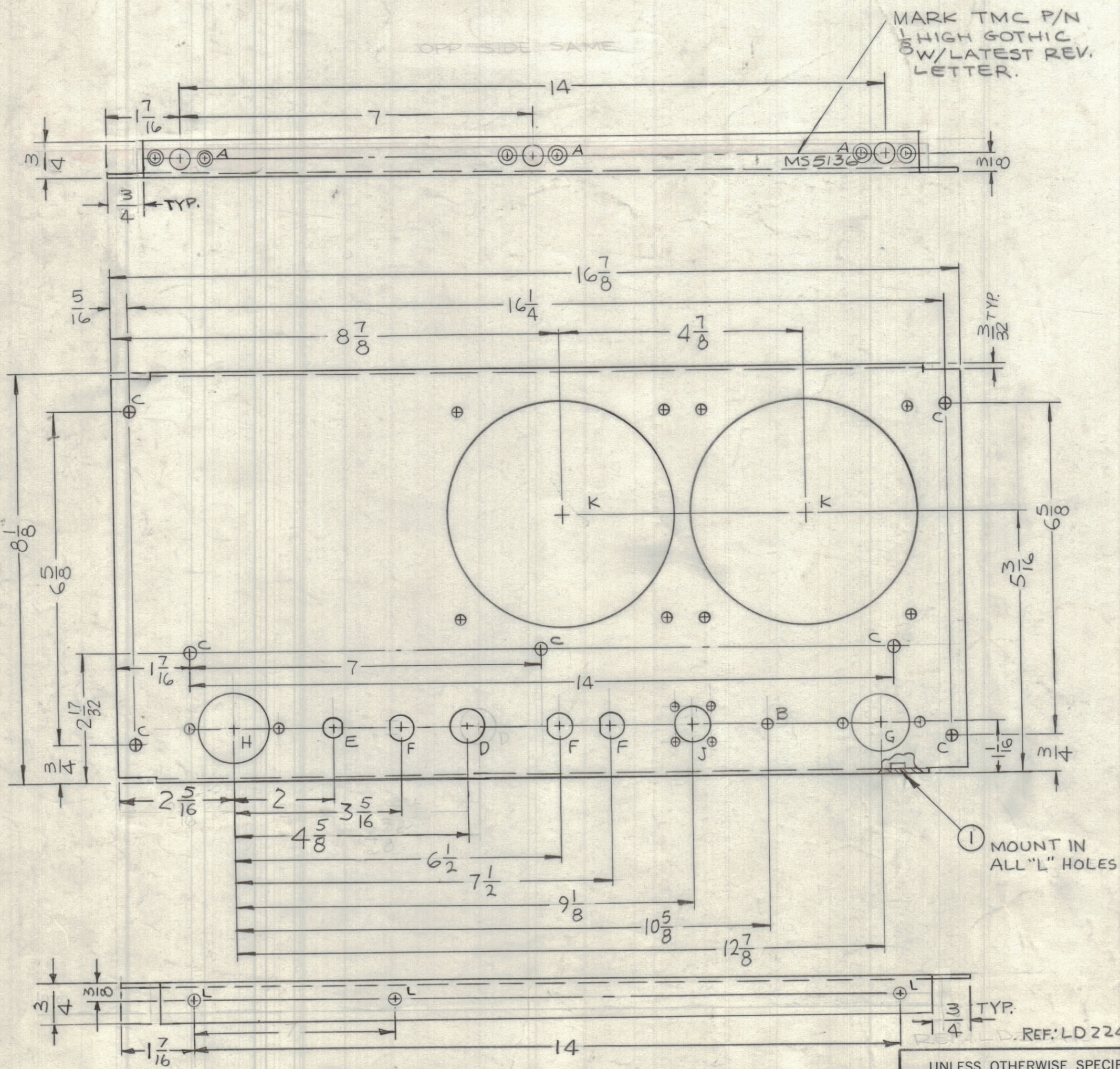
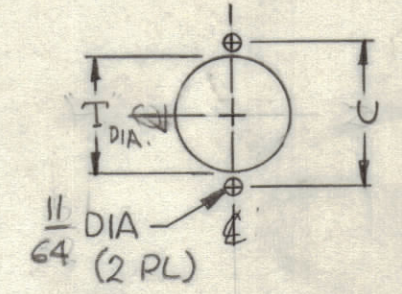


REVISIONS						
ZONE	LTR	DESCRIPTION	DATE	E.M.N.NO	DRAFT	CHKD APPD
	X	EXP. RELEASE	7-11-67			
	X1	3 5/16" F HOLE ADDED, A HOLES WERE .191-.194 D	9-22-67		H.G.	
	Ø	ORIG RELEASE FOR PRODUCTION	9-26-67		R.G.	
	A	L HOLES & ITEM 1 ADDED, 3A DEL.	11-9-67	18600	H.B.	F.B.
	B	3/4 LIPS WERE 5/8	5.16.68	18929	H.B.	F.B.



HOLES	DESCRIPTION	REQ
A	SEE DETAIL	3
B	11/64 DIA.	1
C	13/64 DIA.	7
D	11/16 DIA.	1
E	SEE DETAIL	1
F	SEE DETAIL	3
G	SEE DETAIL	1
H	SEE DETAIL	1
J	SEE DETAIL	1
K	SEE DETAIL	2
L	.191-.194 DIA.	3

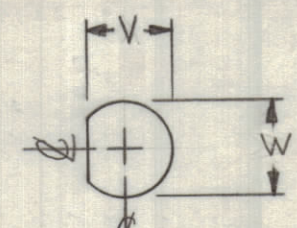
DETAIL	T	U
G	1-3/16	1-1/2
H	1-1/4	1-3/4



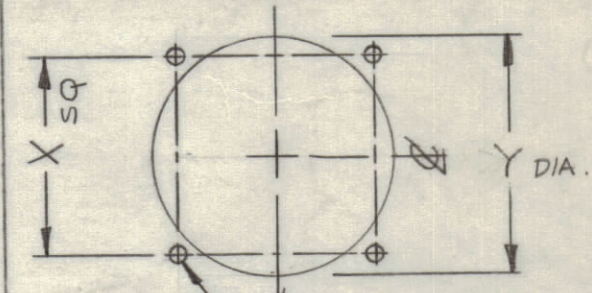
DETAILS G & H

DETAIL	V	W
E	.402 <sup>+0.005</sup> <sub>-.002</sub>	.434 <sup>+0.005</sup> <sub>-.002</sub>
F	.468-.478	.500-.510

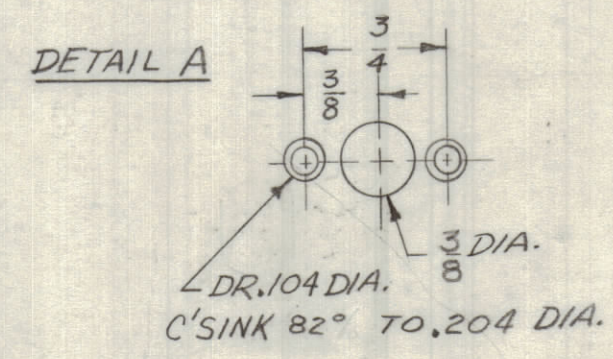
DETAIL	X	Y
J	.718	1.1/16
K	4-1/8	4-1/2



DETAIL E & F



DETAILS J & K



DETAIL A

QTY. REQ.	ITEM	PART NO.	DESCRIPTION	SYMBOL
3	1	NT129-632-4	NUT PLAIN SPLINE	L

F. BUDETTI  
LIST OF MATERIAL SK3240-7

FINAL APPROVAL: [Signature] DATE: 9/26/67  
MECH. DES. DATE: 8-31-67  
ELECT. DES. DATE: [Blank]  
CHECKED: [Signature] DATE: 8-31-67  
DRAWN: [Signature] DATE: 7-11-67

THE TECHNICAL MATERIEL CORP.  
MAMARONECK, NEW YORK

PLATE, REAR

SIZE: C CODE IDENT. NO: 82679 DWG NO: MS5136 ISSUE: B  
SCALE: 1:2 SHEET: OF

- UNLESS OTHERWISE SPECIFIED:
1. USE MATERIAL THICKNESS FOR MAXIMUM RADIUS ON ALL BENDS
  2. ALL ANGULAR BENDS 90 DEGREES
  3. REMOVE ALL BURRS AND SHARP EDGES
  4. MOUNT INSERTS AFTER FINISHING

QTY / UNIT	MODEL USED ON	ASS'Y NO.
1	LPA-2	

APPLICATION

5401-451	CODE A
----------	--------

UNLESS OTHERWISE SPECIFIED DIMENSIONS ARE IN INCHES AND INCLUDE CHEMICALLY APPLIED OR PLATED FINISHES

TOLERANCES ON

DECIMALS	FRACTIONS
.X ± .05	± 1/64
.XX ± .01	ANGLES
.XXX ± .005	± 0°-30'

MATERIAL .062 THICK ALUMINUM 5052-H32

FINISH S401 YELLOW IRIDITE

NOTICE TO PERSONS RECEIVING THIS DRAWING

THE TECHNICAL MATERIEL CORPORATION claims proprietary right in the material disclosed hereon. This drawing is issued in confidence for engineering information only and may not be reproduced or used to manufacture anything shown hereon without permission from THE TECHNICAL MATERIEL CORPORATION to the user. This drawing is loaned for mutual assistance and is subject to recall at any time.