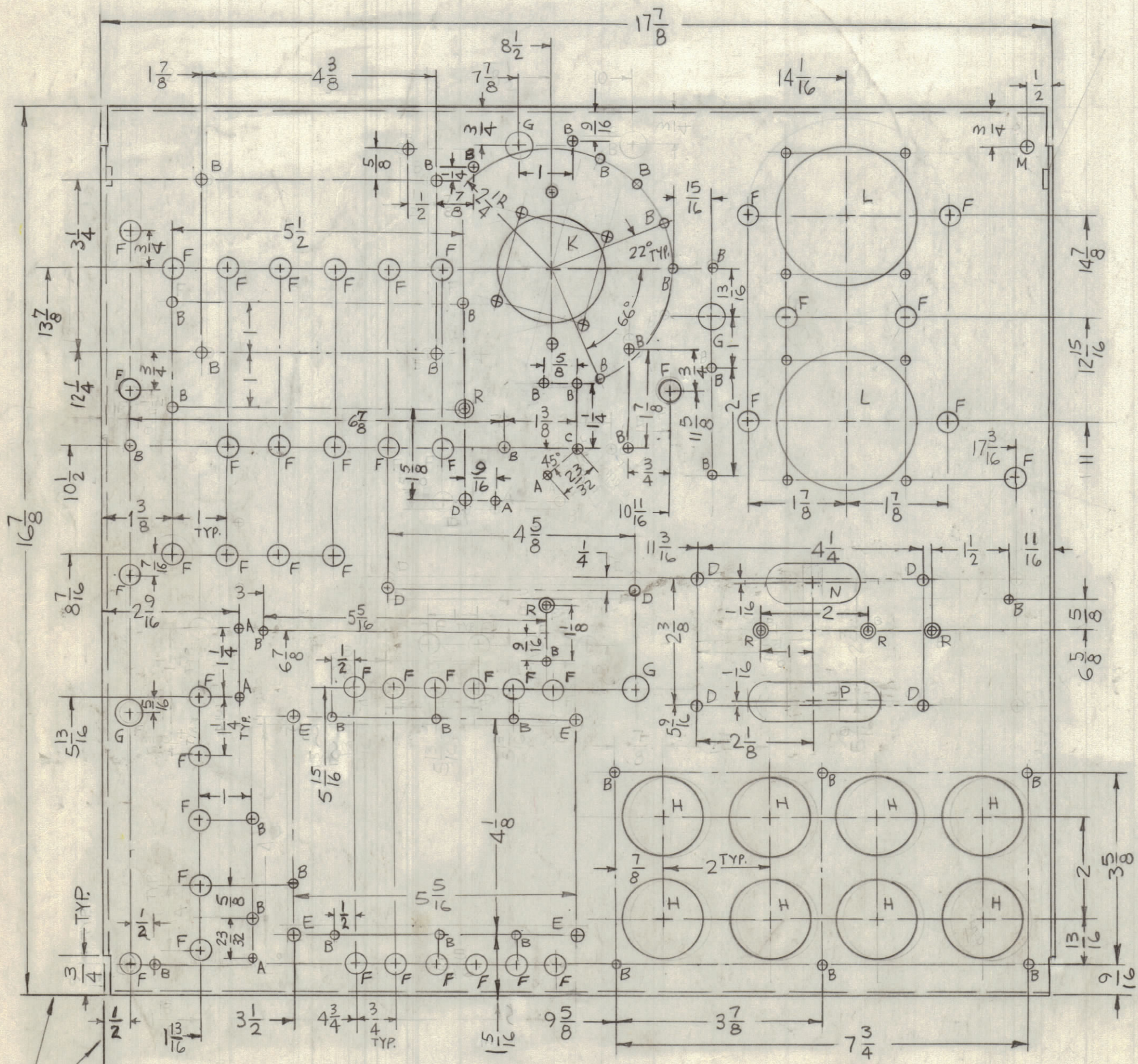


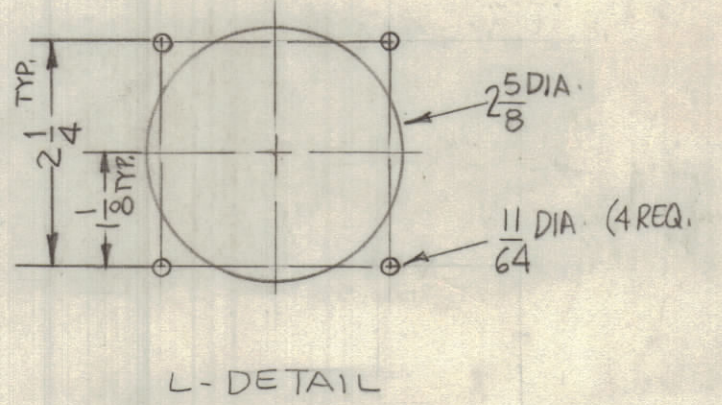
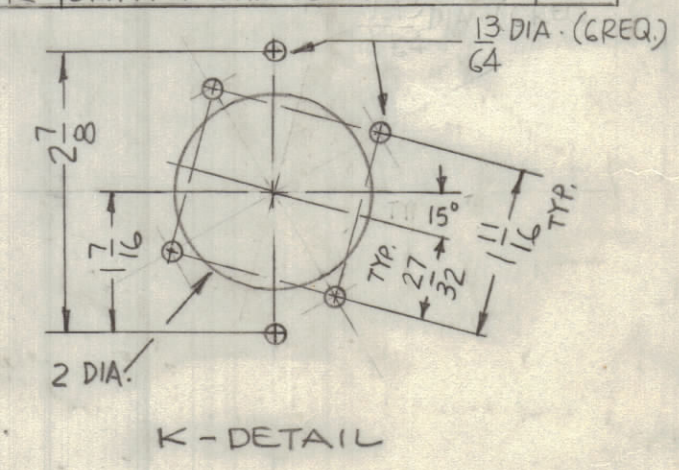
MARK TMC P/N
1/8" HIGH GOTHIC
W/ LATEST REV.
LETTER.

REVISIONS						
ZONE	LTR	DESCRIPTION	DATE	E.M.N.NO	DRAFT	CHKD APPD
	X	EXP. RELEASE	7-12-67			
	XI	1A, 7B, 1C HOLES ADDED 2B, 2D HOLES RELOCATED	9/20/67		H.G.	
	Ø	ORIGINAL RELEASE FOR PRODUCTION	9-26-67		R.G.	
	A	3(R) HOLES WERE 3B HOLES Ø 16 1/2 WAS 16 1/16	11-22-67	18631	H.S.	FB
	B	1-7/8 DIM WAS 2 Ø 4-3/8 DIM WAS 4-3/32	1/5/68	18703	H.S.	FB
	C	ADD TWO "B" HOLES, ONE "A" HOLE & ONE "D" HOLE	1/24/68	18733	H.S.	FB
	D	3/4 NOTCHES WERE 5/8, 6F, 1G, 2E, 3B HOLES REL.	5.16.68	18929	H.S.	FB



1 MOUNT IN ALL
"J" HOLES.

HOLES	DESCRIPTION	REQ
A	9/64 DIA.	5
B	11/64 DIA.	43
C	13/64 DIA.	9
D	15/64 DIA.	5
E	9/32 DIA.	4
F	3/8 DIA.	44
G	1/2 DIA.	4
H	1-5/8 DIA.	8
J	.221-.224 DIA.	6
K	SEE DETAIL	1
L	SEE DETAIL	2
M	1/4 DIA.	1
N	1-3/4 X 3/4	1
P	2-1/2 X 3/4	1
R	DR. 144 DIA. C'SINK 82° TO .284 DIA.	5



QTY. REQ.	ITEM	PART NO.	DESCRIPTION	SYMBOL
6	1	NT/29-832-4	NUT, PLAIN SPLINE	J

LIST OF MATERIAL SK3240-6

THE TECHNICAL MATERIEL CORP.
MAMARONECK, NEW YORK

CHASSIS, MAIN

SIZE	CODE IDENT. NO.	DWG. NO.	ISSUE
C	82679	MS 5135	D

SCALE 1:2 SHEET OF

REF: LD (NOT DRAWN)

UNLESS OTHERWISE SPECIFIED DIMENSIONS ARE IN INCHES AND INCLUDE CHEMICALLY APPLIED OR PLATED FINISHES

TOLERANCES ON

DECIMALS	FRACTIONS
.X ± .05	± 1/64
.XX ± .01	ANGLES
.XXX ± .005	± 0° -30'

MATERIAL .081 THICK ALUMINUM 5052-H32

FINISH S404 YEL IRIDITE

1	LPA-2	
QTY / UNIT	MODEL USED ON	ASS'Y NO.
APPLICATION		
S401-451	CODE A	

NOTICE TO PERSONS RECEIVING THIS DRAWING

THE TECHNICAL MATERIEL CORPORATION claims proprietary right in the material disclosed hereon. This drawing is issued in confidence for engineering information only and may not be reproduced or used to manufacture anything shown hereon without permission from THE TECHNICAL MATERIEL CORPORATION to the user. This drawing is loaned for mutual assistance and is subject to recall at any time.

- UNLESS OTHERWISE SPECIFIED:
- USE MATERIAL THICKNESS FOR MAXIMUM RADIUS ON ALL BENDS
 - ALL ANGULAR BENDS 90 DEGREES
 - REMOVE ALL BURRS AND SHARP EDGES
 - MOUNT INSERTS AFTER FINISHING