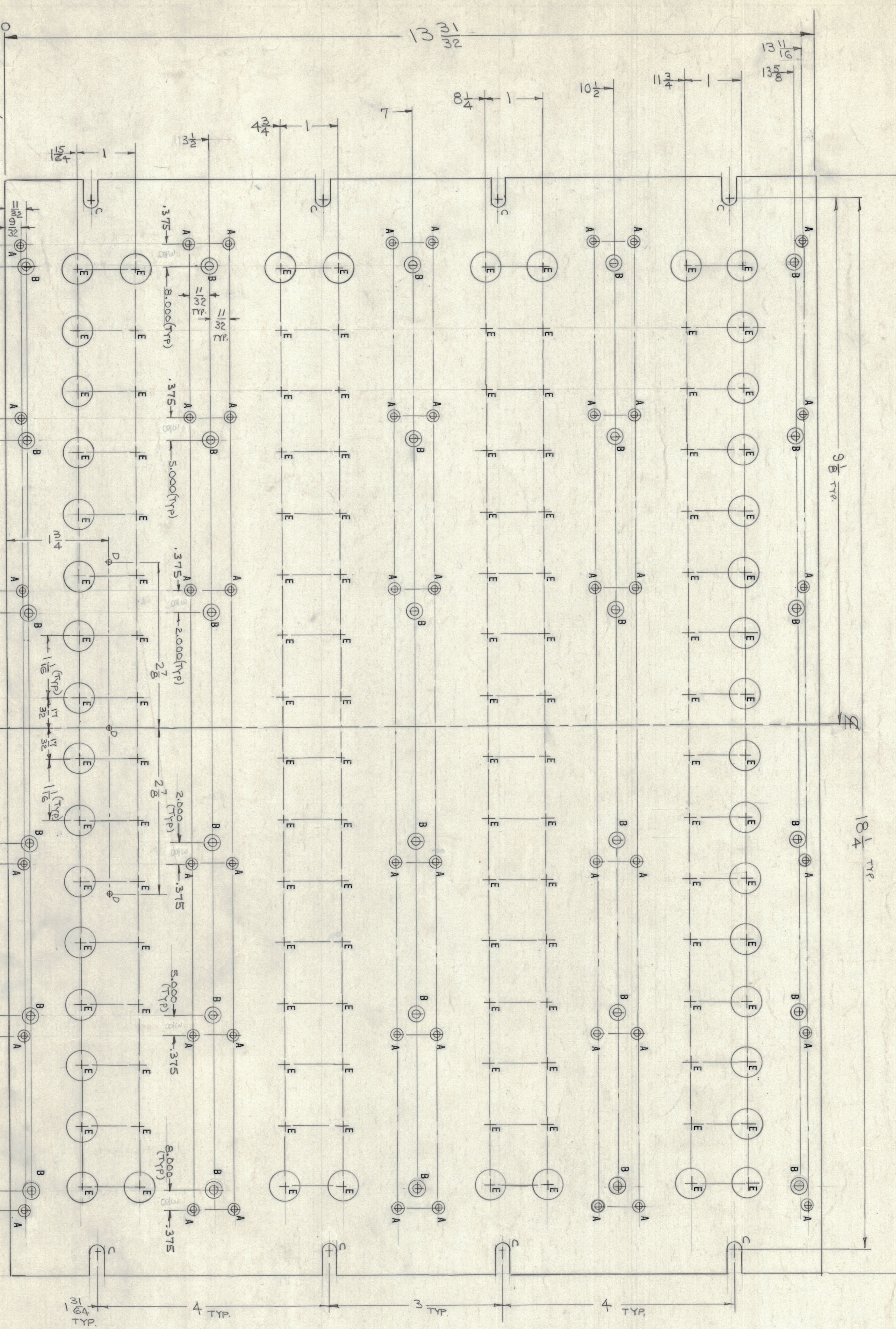


REVISIONS			
ZONE	LTR	DESCRIPTION	DATE
X	EXP. RELEASE		8/17/67
	ORIGINAL RELEASE FOR PROB.		8/22/67

DATE	E.M.A.N.D.	DRAFT	CHKD.	APPD.
8/17/67			J.D.G.	
8/22/67			R.S.	



FINISHING NOTES:
 S404 IRIDIOTE 14-2 AL-COAT
 S114 ZINC CHROMATE PRIMER
 S115 TMC SMOOTH GREY ENAMEL
 OR PRIME & PAINT PER
 CUSTOMER SPECIFICATIONS

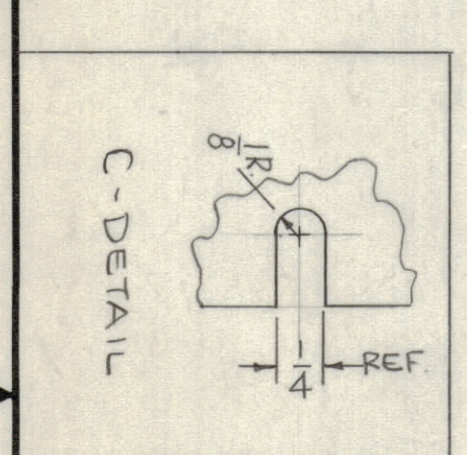
MACHINING NOTES:
 1. LATERAL BOW OF PANEL MUST BE KEPT .031 TOL.
 2. MILL ALL EDGES
 3. HOLES MUST BE DRILLED
 4. HOLES MUST BE FREE OF ALL MACHINING MARKS, GOGGES & SCRATCHES. IF NECESSARY, SAND FRONT OF PANEL WITH NO. 120 GRIT SANDPAPER.

NOTE: METAL STAMP TMC PART NUMBER 1/8 HIGH GOTHIC WITH LATEST REVISION LETTER ON REAR OF PANEL

FRONT OF PANEL SHOWN

HOLE	DESCRIPTION	REQ.
A	SEE C. SINK DETAIL	48
B	SEE C. SINK DETAIL	30
C	SEE SLOT DETAIL	8
D	.0785 DIAMETER	3
E	.515 DIAMETER	128

HOLE	TYPE	X	Y
A	3-48	.204	DRILL & TAP 3-48
B	6-32	.294	.144 DIAMETER



QTY / UNIT	SPP 40764	MODEL USED ON	ASSY. NO.
1		APPLICATION	
		CODE S401-451	

TOLERANCES ON
 DECIMALS X ± .05
 FRACTIONS ± 1/64
 ANGLES ± 0.30
 MATERIAL 3/16 THICK
 FINISH SEE NOTES

QTY.	ITEM	PART NO.	DESCRIPTION	SYMBOL
1	A. MARTINEGO		THE TECHNICAL MATERIEL CORP.	
			MAMARONECK, NEW YORK	
			PANEL FRONT	
			SIZE (CODE IDENT NO) DWG NO.	
			D 82679	MS 5127
			SCALE 1:1	SHEET OF

THE TECHNICAL MATERIEL CORPORATION claims proprietary right in the material disclosed herein. This material is the property of THE TECHNICAL MATERIEL CORPORATION and is loaned to the user for mutual assistance and is subject to recall at any time.