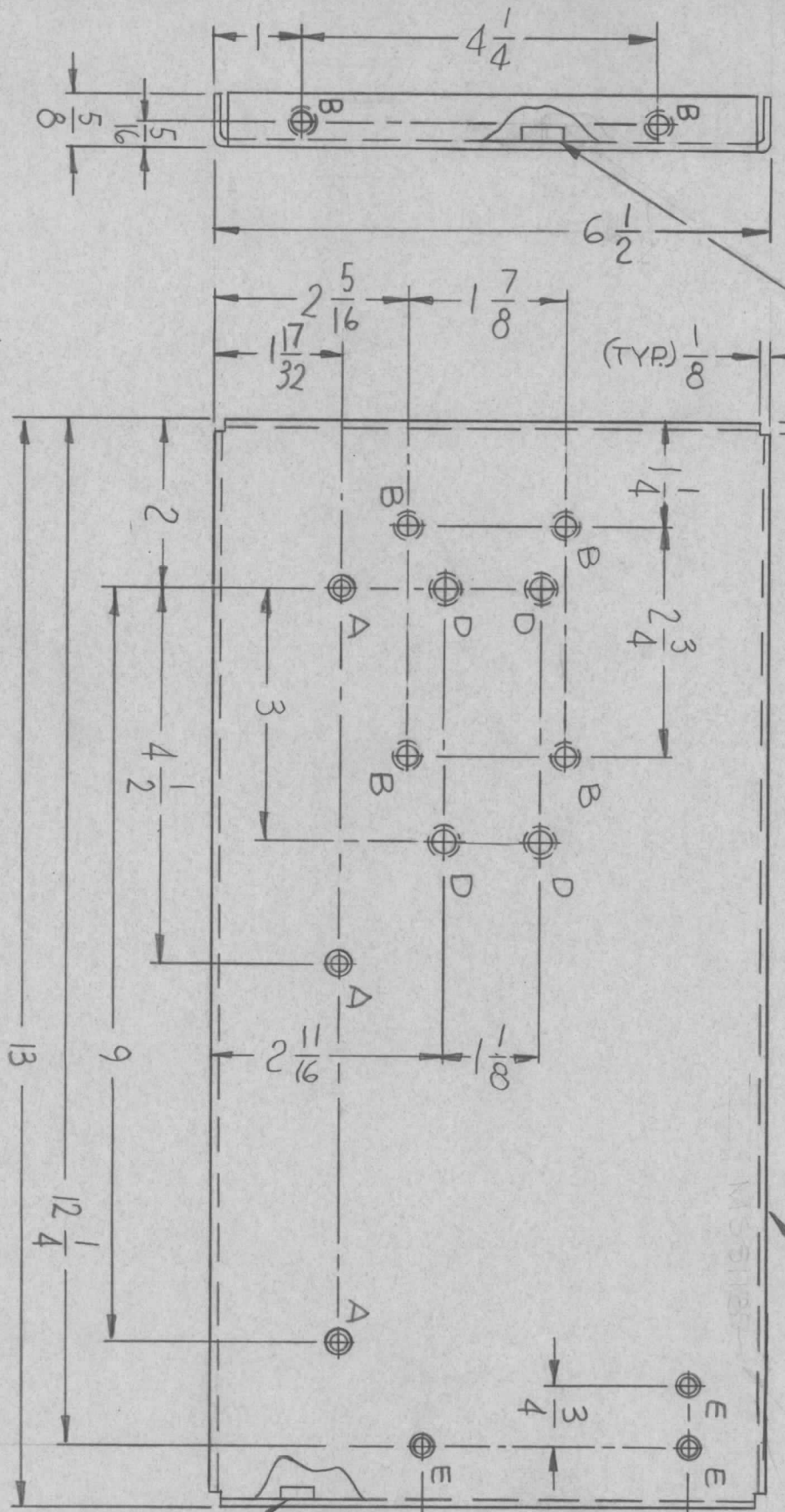


REVISIONS							
ZONE	LTR	DESCRIPTION	DATE	E.M.N. NO	DRAFT	CHKD	APPD
	X	EXP. RELEASE	5.22.67	-4-	UHD		
	Ø	ORIG. RELEASE FOR PROD.	6.2.67	Ø	RG		PJG

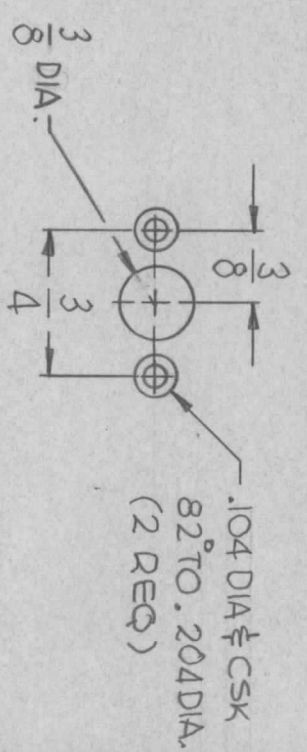
MOUNT ITEM
 ② IN ALL "D" HOLES
 AS SHOWN

MARK TMC PART/NO. MSS118-
 1 HIGH GOTHIC W/LATEST
 REVISION LETTER.



MOUNT ITEM ①
 IN ALL "B" HOLES
 AS SHOWN.

HOLE	DESCRIPTION	REQ
A	.169 DIA ± CSK 82° TO .337 DIA.	3
B	.221 TO .224 DIA.	8
C	SEE DETAIL	4
D	.250 TO .263 DIA.	4
E	.120 DIA ± CSK 82° TO .230 DIA	3



OPPOSITE SIDE IDENTICAL

LIST OF MATERIAL

REQ'D ITEM	PART NUMBER	DESCRIPTION	SYM.
4	NT129-1032-4	NUT, PLAIN, SPLINE TYPE	D
8	NT129-832-4	NUT, PLAIN, SPLINE TYPE	B

THE TECHNICAL MATERIEL CORP.
 MAMARONECK, NEW YORK

PLATE, SIDE, RIGHT

FINAL APPROVAL	DATE
MECH. DES.	DATE
ELECT. DES.	DATE
CHECKED	DATE
DRAWN	DATE

SIZE	CODE IDENT. NO.	DWG NO.	ISSUE
B	82679	MSS118	Ø

1 EA	SMEA-1, SMEB-1	MODEL USED ON	ASS'Y NO.	UNLESS OTHERWISE SPECIFIED DIMENSIONS ARE IN INCHES AND INCLUDE CHEMICALLY APPLIED OR PLATED FINISHES
1 EA	SMEC-1, SMEE-1			
APPLICATION				DECIMALS
S401-451				X ± .05
CODE A				.XX ± .01
				.XXX ± .005
				FRACTIONS
				1/64
				ANGLES
				0° .30'
				MATERIAL
				.064 ALUMINUM
				5052-H32
				FINISH
				S404 YEL IRIDITE

UNLESS OTHERWISE SPECIFIED:

1. USE MATERIAL THICKNESS FOR MAXIMUM RADIUS ON ALL BENDS
2. ALL ANGULAR BENDS 90 DEGREES
3. REMOVE ALL BURRS AND SHARP EDGES
4. MOUNT INSERTS AFTER FINISHING

NOTICE TO PERSONS RECEIVING THIS DRAWING
 THE TECHNICAL MATERIEL CORPORATION claims proprietary right in the material disclosed hereon. This drawing is issued in confidence for engineering information only and may not be reproduced or used to manufacture anything shown hereon without permission from THE TECHNICAL MATERIEL CORPORATION to the user. This drawing is loaned for mutual assistance and is subject to recall at any time.