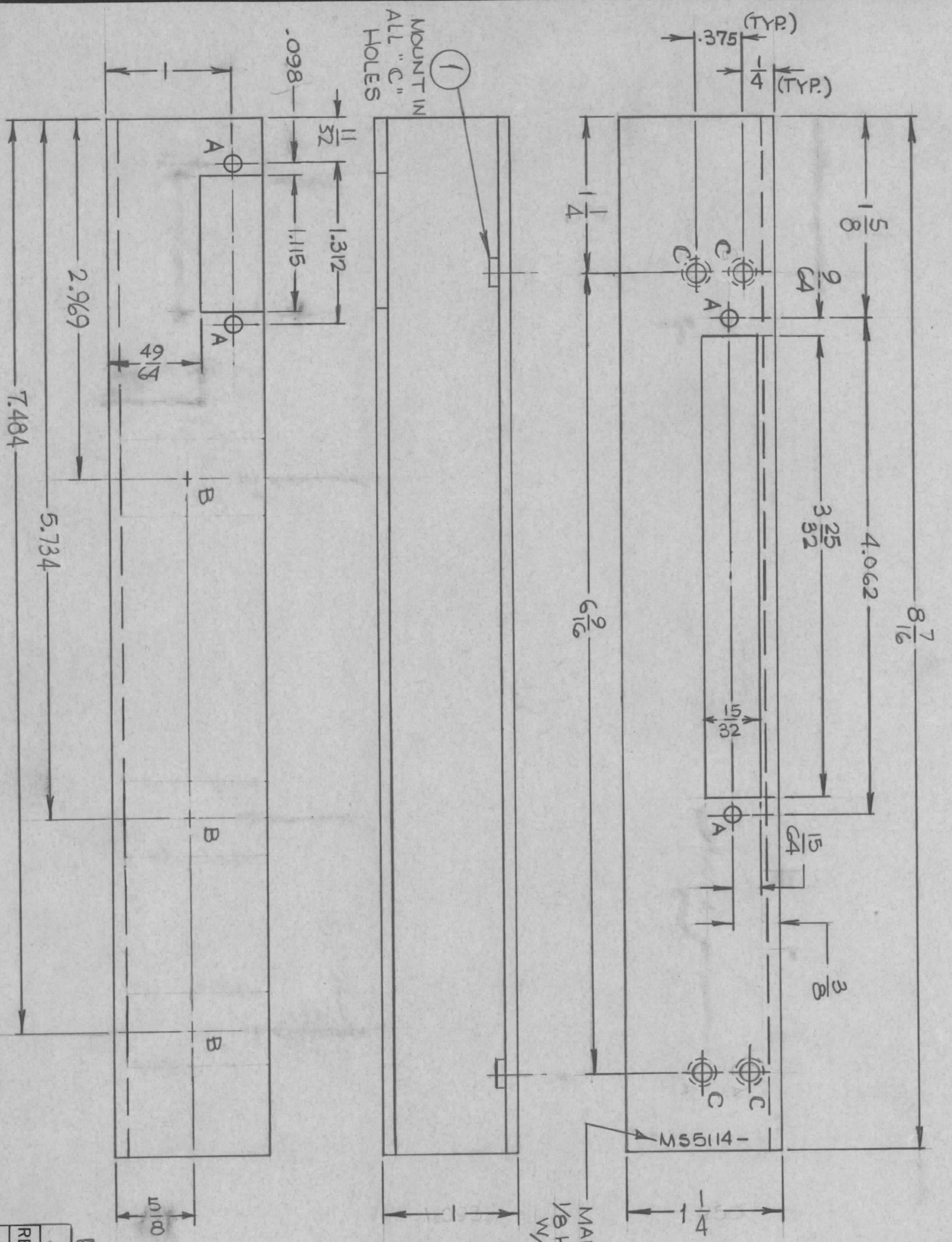
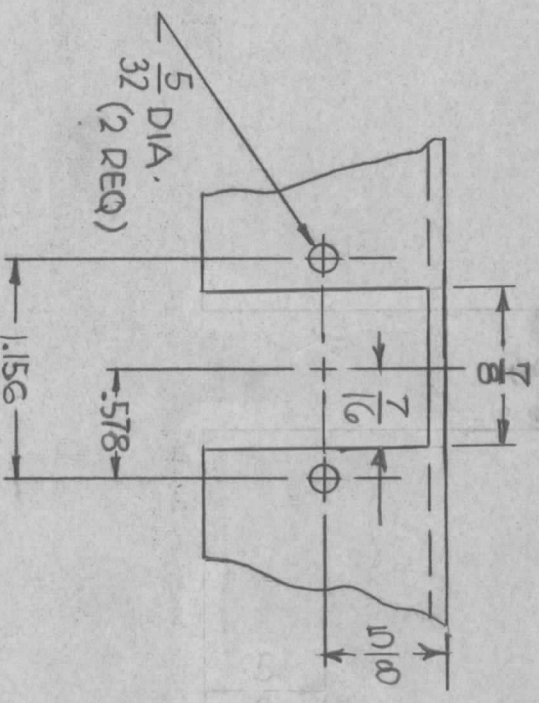


REVISIONS						
ZONE	LTR	DESCRIPTION	DATE	E.M.N. NO.	DRAFT	CHKD
	X 1	REWORK FOR CLARITY	6-26-67			
	X 2	4 "C" HOLES WERE "A" HOLES ADD ITEM 1	6-19-67			
		ORIG. RELEASE FOR PROD	8-4-67			

HOLE	DESCRIPTION	REQ
A	9/64 DIA.	4
B	SEE DETAIL	3
C	.161 - .164 DIA.	4



- UNLESS OTHERWISE SPECIFIED:
1. USE MATERIAL THICKNESS FOR MAXIMUM RADIUS ON ALL BENDS
  2. ALL ANGULAR BENDS 90 DEGREES
  3. REMOVE ALL BURRS AND SHARP EDGES
  4. MOUNT INSERTS AFTER FINISHING

QTY / UNIT	3	MODEL USED ON	VLRG-1	ASS'Y NO.	
APPLICATION		CODE	A	S401-451	

DECIMALS	X ± .05	FRACTIONS	1/64
XX ± .01	TOLS.	ANGLES	0° - 30'
.XXX ± .005			

MATERIAL	093 THK ALUM. 5052-H32	FINISH	S404 YEL IRDITE
DRAWN	H. Austin	DATE	5-1-67

SIZE	B	CODE IDENT. NO.	82679	DWG NO.	M55114	ISSUE	
SCALE	1:1						

REF: LD2232-1, -2, -3

REQ'D ITEM	PART NUMBER	DESCRIPTION	SYM.
4	1	NT129-440-5	NUT, PLAIN, SPLINE
			C

THE TECHNICAL MATERIEL CORPORATION claims proprietary right in the material disclosed hereon. This drawing is issued in confidence for engineering information only and may not be reproduced or used to manufacture anything shown hereon without permission from THE TECHNICAL MATERIEL CORPORATION to the user. This drawing is loaned for mutual assistance and is subject to recall at any time.

THE TECHNICAL MATERIEL CORP.  
MAMARONECK, NEW YORK

CHASSIS, TRANSFORMER  
BAND 1, 2, 3