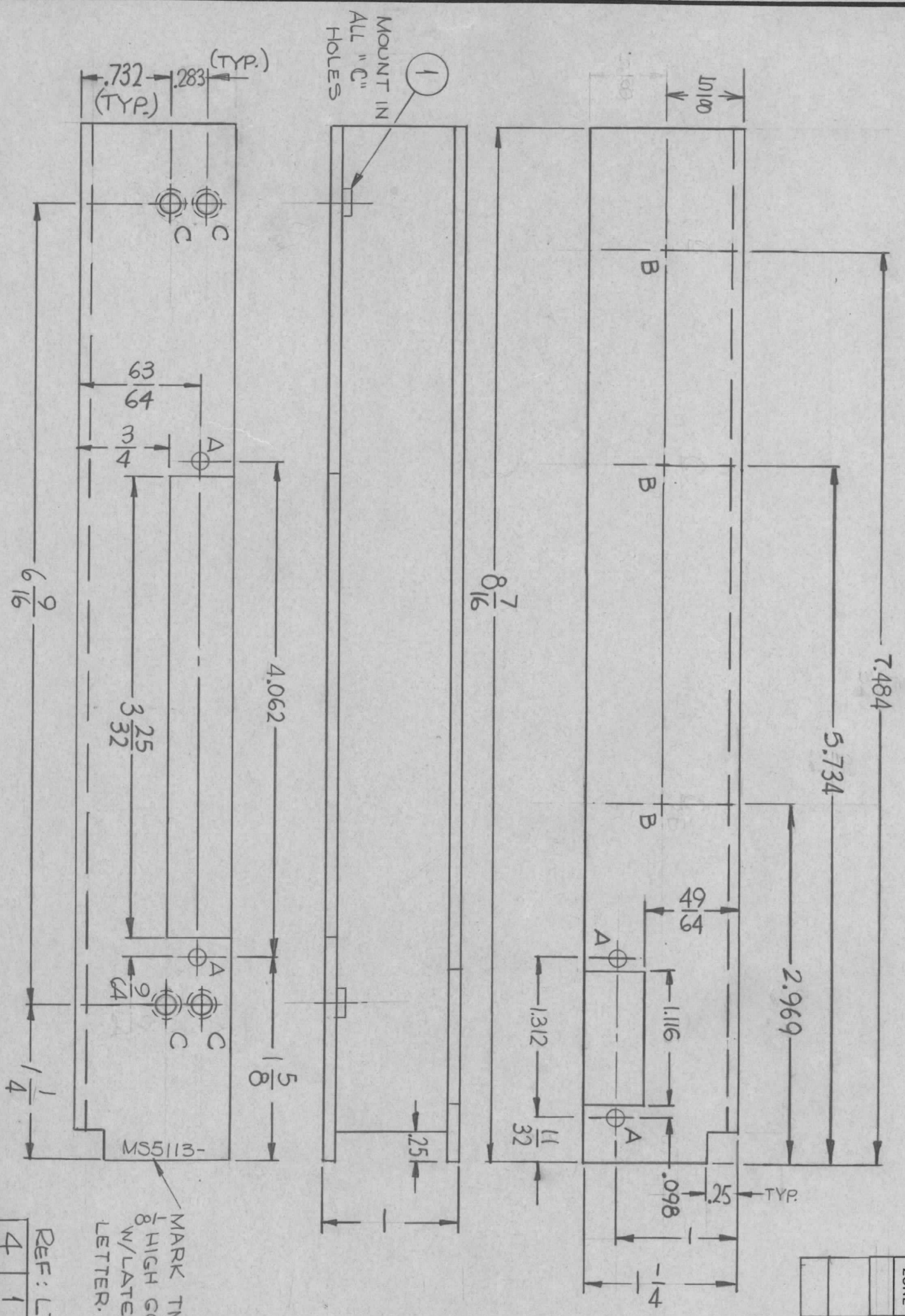


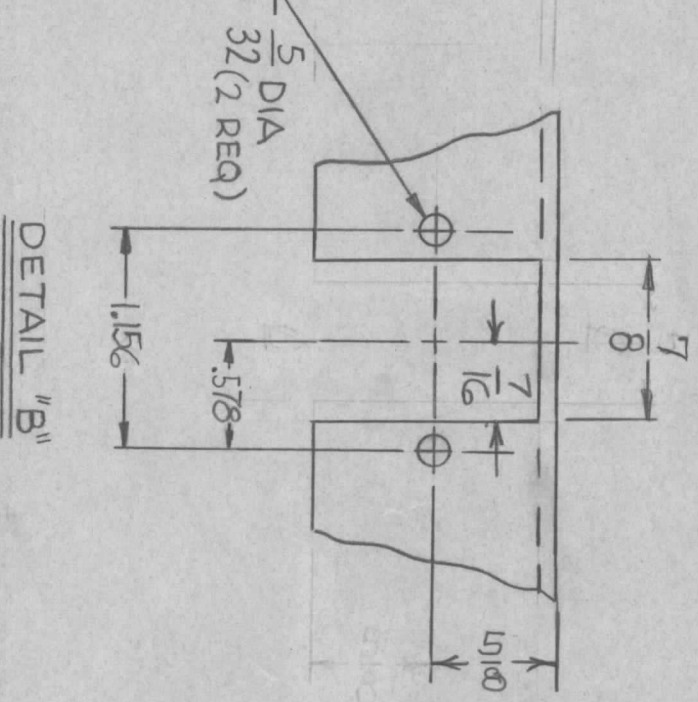
REVISIONS

ZONE	LTR	DESCRIPTION	DATE	E.M.N. NO	DRAFT	CHKD	APPD
X1		REDRAWN FOR CLARITY	6.5.67		410		
X2		.283 WAS .375; 4 "C" HOLES WERE "A" HOLES; ADD. IT. 1	6.19.67		ALL		
		ORIGINAL RELEASE	8/7/67				

HOLE	DESCRIPTION	REQ
A	9/64 DIA.	4
B	SEE DETAIL	3
C	.161 - .164 DIA.	4



MARK TMC P/N
1/8 HIGH GOTHIC
W/LATEST REV.
LETTER.



REF: LD 2233

REQ'D ITEM	PART NUMBER	DESCRIPTION	SYM.
4	NT129-440-5	NUT, PLAIN, SPLINE	C

THE TECHNICAL MATERIEL CORP.
MAMARONECK, NEW YORK

CHASSIS TRANSFORMER,
OSC.

QTY / UNIT	1	MODEL USED ON	VLRC-1	ASSY NO.	
APPLICATION		CODE	A	S401-451	

UNLESS OTHERWISE SPECIFIED DIMENSIONS ARE IN INCHES AND INCLUDE CHEMICALLY APPLIED OR PLATED FINISHES	DECIMALS	TOLS.	FRACTIONS	ANGLES
	X ± .05	.XX ± .01	1/64	0° - 30'
	.XXX ± .005			

FINAL APPROVAL	DATE
<i>[Signature]</i>	8-14-67
MECH. DES.	DATE
<i>[Signature]</i>	8-4-67
ELECT. DES.	DATE
<i>[Signature]</i>	8-7-67

SIZE	CODE IDENT. NO.	DWG NO.	ISSUE
B	82679		M55113
SCALE	1:1	M/L W/F	SHEET OF

- UNLESS OTHERWISE SPECIFIED:
1. USE MATERIAL THICKNESS FOR MAXIMUM RADIUS ON ALL BENDS
 2. ALL ANGULAR BENDS 90 DEGREES
 3. REMOVE ALL BURRS AND SHARP EDGES
 4. MOUNT INSERTS AFTER FINISHING

NOTICE TO PERSONS RECEIVING THIS DRAWING
THE TECHNICAL MATERIEL CORPORATION claims proprietary right in the material disclosed hereon. This drawing is issued in confidence for engineering information only and may not be reproduced or used to manufacture anything shown hereon without permission from THE TECHNICAL MATERIEL CORPORATION to the user. This drawing is loaned for mutual assistance and is subject to recall at any time.