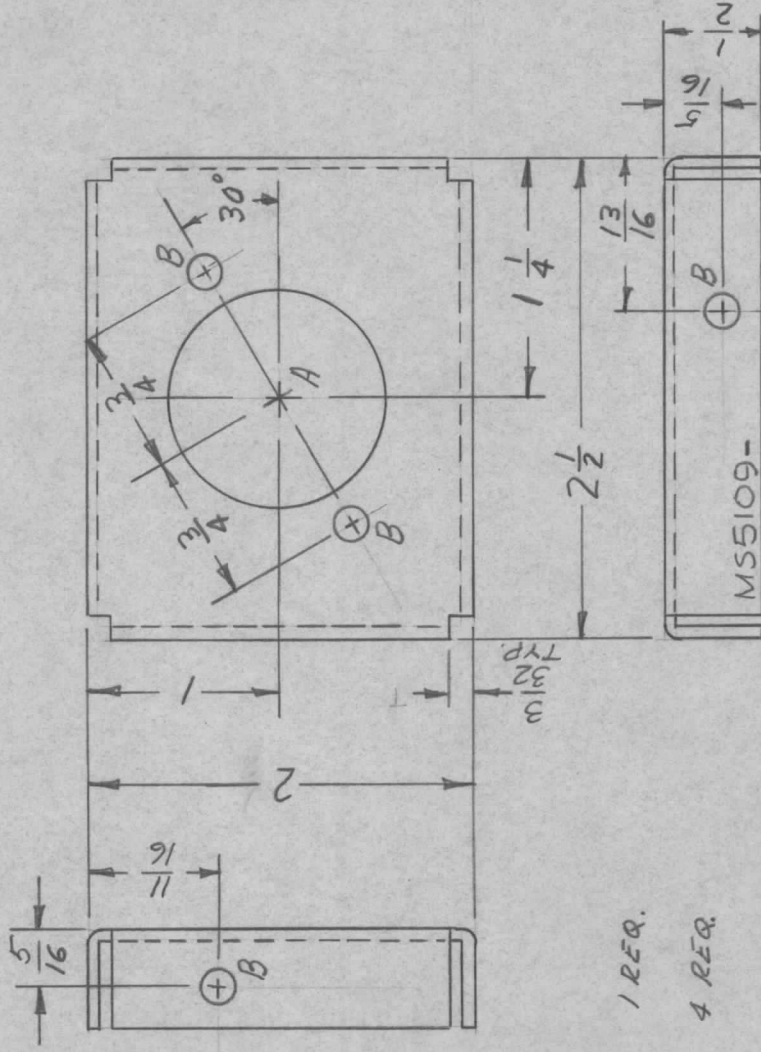


APPLICATION

REVISIONS

QTY	MODEL USED ON	ASS'Y NO.	LTR	DESCRIPTION	DATE	E.M.N.NO	DRAFT	CHKD	APPD
1	KIT334		X	EXP. RELEASE	9/20/67		BN	MA	
			Ø	ORIG. RELEASE FOR PROD.	7.3.67	Ø	R.G.	MA	EH. MA



A ~ 1/8 DIA. 1 REQ.

B ~ 1/64 DIA. 4 REQ.

UNLESS OTHERWISE SPECIFIED:

1. USE MATERIAL THICKNESS FOR MAXIMUM RADIUS ON ALL BENDS
2. ALL ANGULAR BENDS 90 DEGREES
3. REMOVE ALL BURRS AND SHARP EDGES

UNLESS OTHERWISE SPECIFIED
DIMENSIONS ARE IN INCHES
AND INCLUDE CHEMICALLY APPLIED
OR PLATED FINISHES

DECIMALS
.X ± .05
.XX ± .01
.XXX ± .005

FRACTIONS
1/64

ANGLES
0° - 30°

MATERIAL .064 ALUM

5052-H32

FINISH 5404

VEL IRIDITE

S401-451

REQ'D	ITEM	PART NUMBER	DESCRIPTION	SYM.
	BUDETTI		SK 3231-MS100	
LIST OF MATERIAL				
THE TECHNICAL MATERIEL CORP. MAMARONECK, NEW YORK				
BRACKET, RELAY				
SIZE	CODE IDENT. NO.	DWG NO.	ISSUE	
A	82679	MS 5109	Ø	
SCALE	1:1	SHEET	OF	

NOTICE TO PERSONS RECEIVING THIS DRAWING
THE TECHNICAL MATERIEL CORPORATION claims proprietary right in the material disclosed herein. This drawing is issued in confidence for engineering information only and may not be reproduced or used to manufacture anything shown hereon without permission from THE TECHNICAL MATERIEL CORPORATION to the user. This drawing is loaned for mutual assistance and is subject to recall at any time.