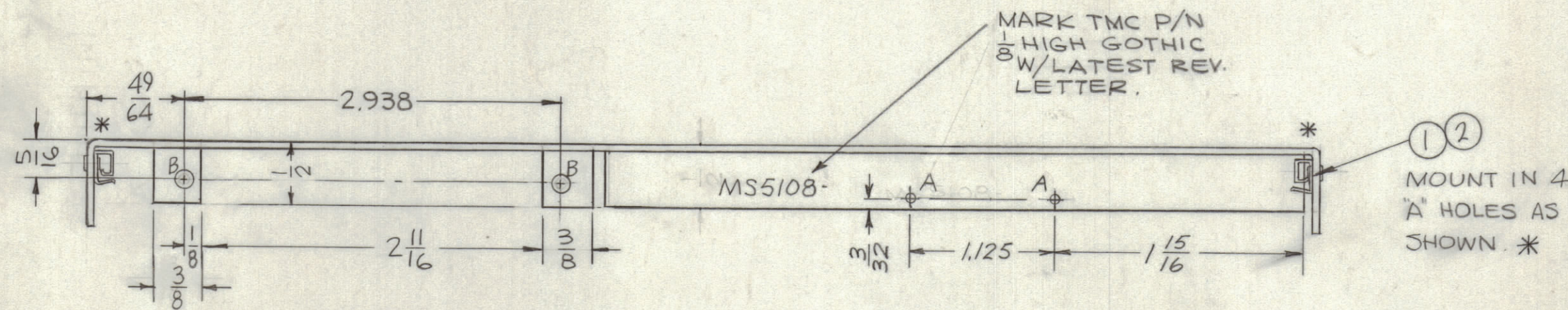
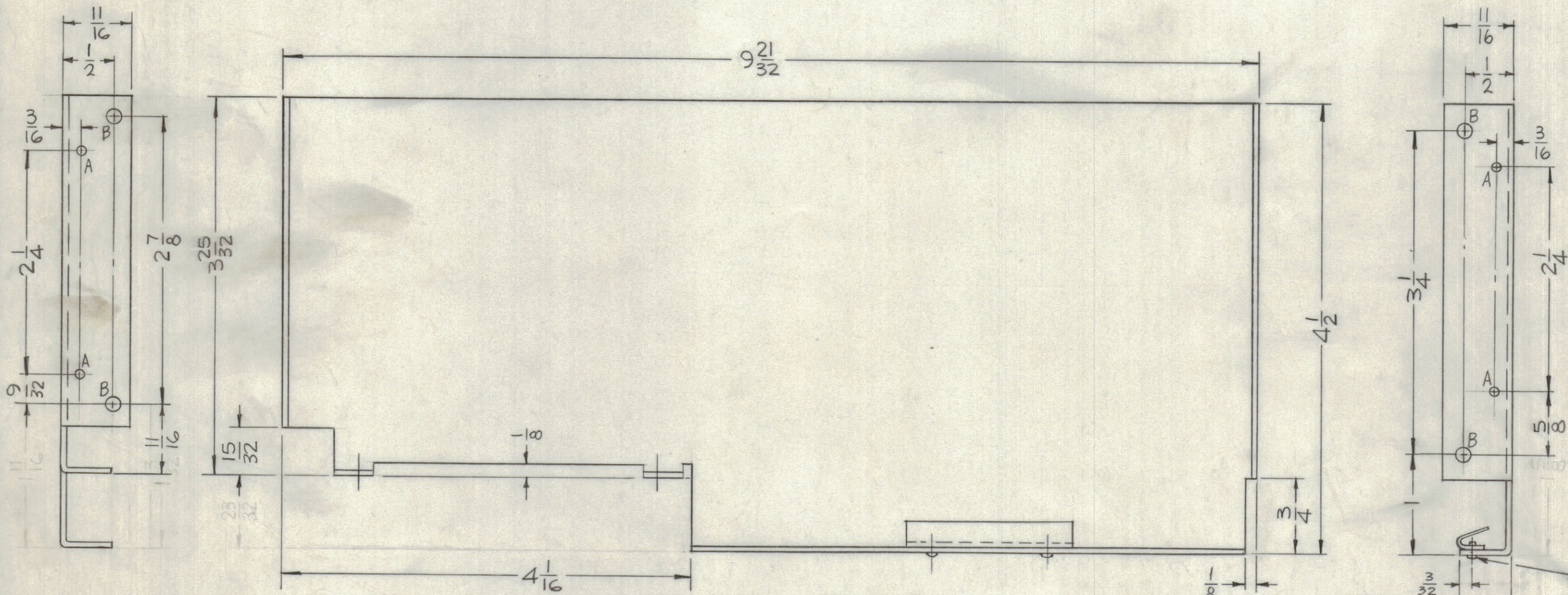


REVISIONS						
ZONE	LTR	DESCRIPTION	DATE	E.M.N.NO	DRAFT	CHKD APPD
X		EXP. RELEASE	4-5-67			
Ø		ORIGINAL RELEASE FOR PRODUCTION	6-26-67	Ø	RG	
A		REV & UPDATED	4-22-68	18877	HS.	CP



HOLES	DESCRIPTION	REQ.
A	.067 DIA	6
B	9/64 DIA.	6



③ MOUNT IN 2
② "A" HOLES AS SHOWN

QTY. REQ.	ITEM	PART NO.	DESCRIPTION	SYMBOL
1	3	FP199-3	CONTACT, ELEC	A
6	2	EY100-5	EYELET, MTL.	A
2	1	CU157-3	RET., PC BD	A

O. POSE LIST OF MATERIAL

FINAL APPROVAL	DATE
<i>[Signature]</i>	6/26/67
MECH. DES.	DATE
<i>[Signature]</i>	6/26/67
ELECT. DES.	DATE
CHECKED	DATE
<i>[Signature]</i>	6-22-67
DRAWN	DATE
<i>[Signature]</i>	4-4-67

THE TECHNICAL MATERIEL CORP.
MAMARONECK, NEW YORK

BRACKET, CONNECTOR & P.C. CARD
CARD #12

- UNLESS OTHERWISE SPECIFIED:
- USE MATERIAL THICKNESS FOR MAXIMUM RADIUS ON ALL BENDS
 - ALL ANGULAR BENDS 90 DEGREES
 - REMOVE ALL BURRS AND SHARP EDGES
 - MOUNT IT. 1 & 2 AFTER FINISHING

1	MMX-1	BMA105
QTY / UNIT	MODEL USED ON	ASS'Y NO.
APPLICATION		
S401-451, S401-S401-	CODE	
	A	

NOTICE TO PERSONS RECEIVING THIS DRAWING
THE TECHNICAL MATERIEL CORPORATION claims proprietary right in the material disclosed herein. This drawing is issued in confidence for engineering information only and may not be reproduced or used to manufacture anything shown hereon without permission from THE TECHNICAL MATERIEL CORPORATION to the user. This drawing is loaned for mutual assistance and is subject to recall at any time.

UNLESS OTHERWISE SPECIFIED DIMENSIONS ARE IN INCHES AND INCLUDE CHEMICALLY APPLIED OR PLATED FINISHES	
TOLERANCES ON	
DECIMALS	FRACTIONS
.X ± .05	± 1/64
.XX ± .01	ANGLES
.XXX ± .005	± 0° -30'
MATERIAL	
.050 THK ALUMINUM	
3052-H32	
FINISH	
S404 YEL. IRIDITE	

SIZE	CODE IDENT.NO.	DWG NO.	ISSUE
C	82679	MS5108	A
SCALE 1:1		SHEET	OF