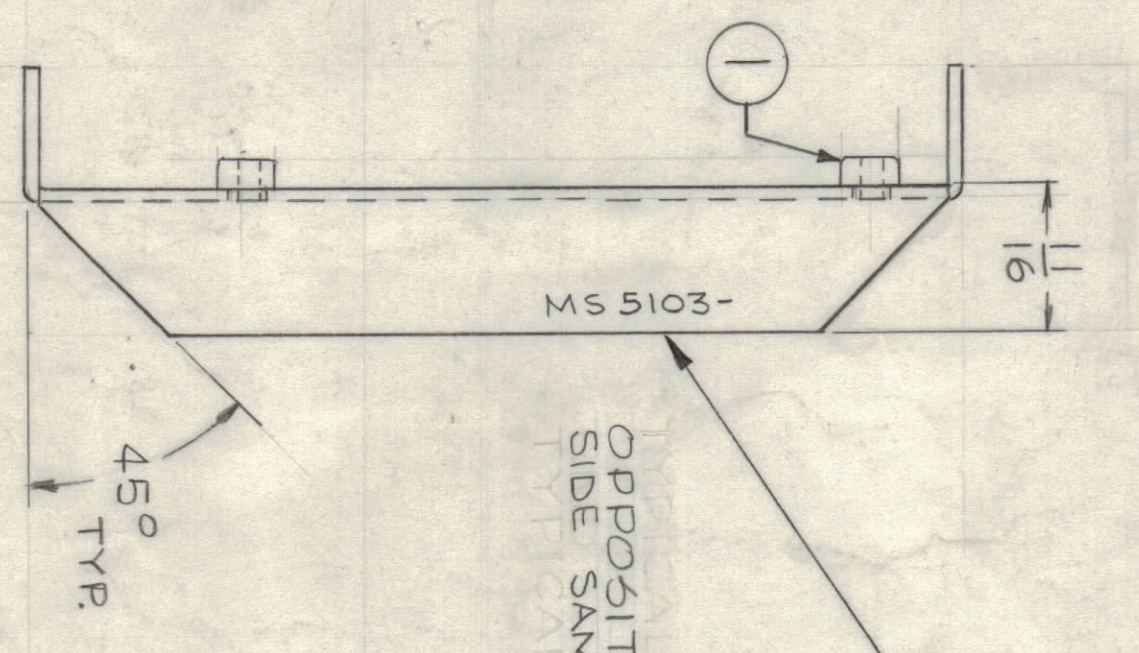
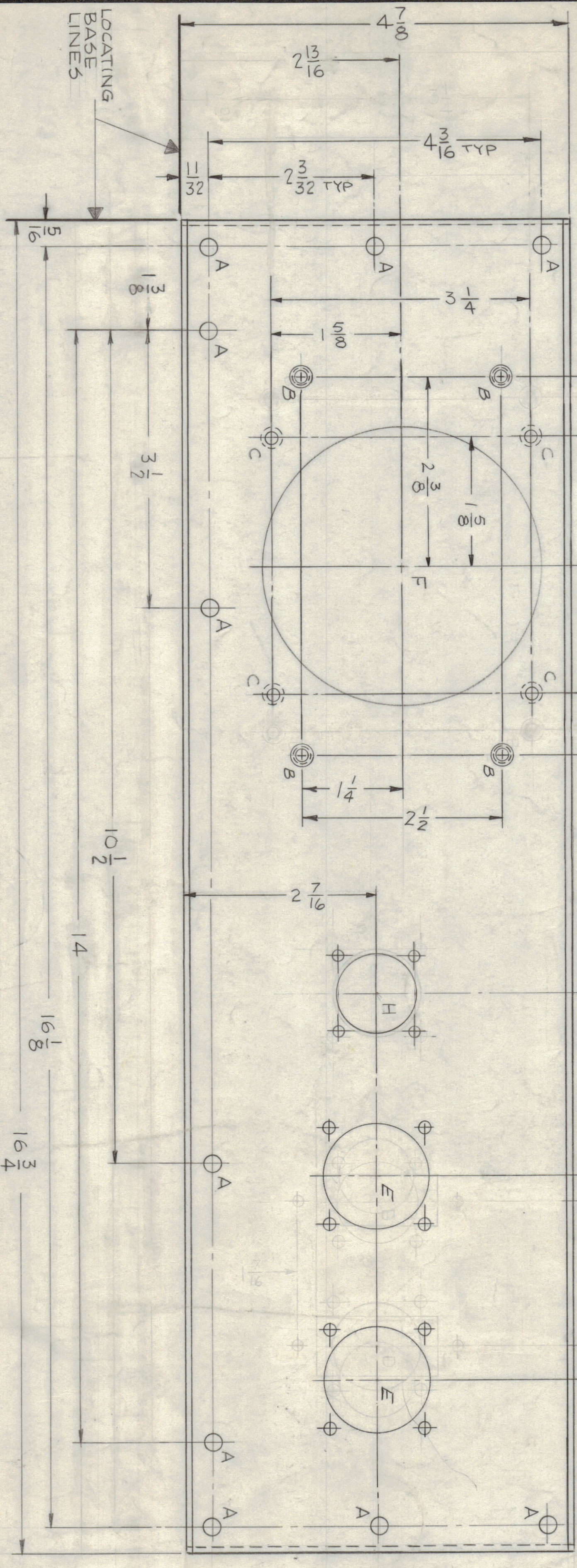
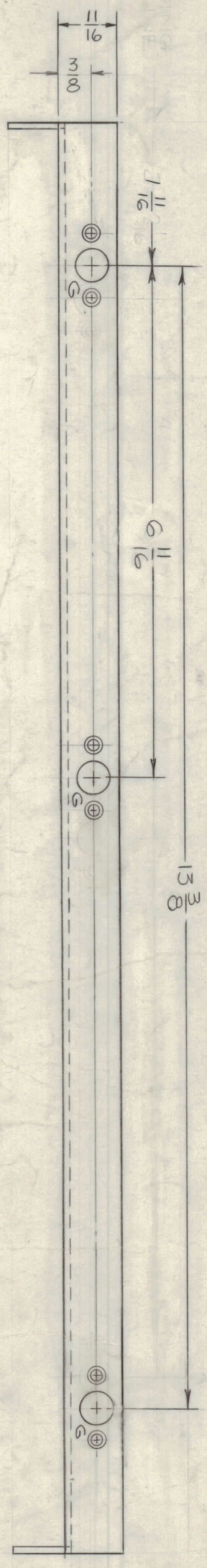


HOLE	DESCRIPTION	REQ
A	.13164 DIA.	10
B	.191 - .194 DIA.	4
C	.144 DIA, C/SK.82° X .284 DIA.	4
D	DELETED	
E	SEE DETAIL	2
F	3-1/2 DIA.	1
G	SEE DETAIL	6
H	SEE DETAIL	1

ZONE	LTR	DESCRIPTION	DATE	E.M.N.O	DRAFT	CHKD	APP
X	X1	EXPERIMENTAL RELEASE	3-3-67		RME	275	275
X	X2	DETAILED REV.	2-14-67		NB	275	275
X	X3	BC, F+G HOLES RELOCATED	1-22-68		EG	275	275
X	X4	HOLES RELOCATED. WERE 1/16 DIA	4-5-68		EG	275	275
X	X5	ORIGINAL RELEASE FOR PRODUCTION					
X	X6	CONV. MTS. COMPL. REVISED	11-28-68	13-21-2	EG	275	275



MARK TMC PART NO. 1/8 HIGH GOTHIC WITH LATEST REVISION LETTER



OPPOSITE SIDE SAME

UNLESS OTHERWISE SPECIFIED:

1. USE MATERIAL THICKNESS FOR MAXIMUM RADII ON ALL BENDS
2. ALL ANGULAR BENDS 90 DEGREES
3. REMOVE ALL BURRS AND SHARP EDGES
4. MOUNT INSERTS AFTER FINISHING

QTY / UNIT	MODEL USED ON	ASSY NO.
1	RTIH-3	

TOLERANCES ON	FRACTIONS	DECIMALS
ANGLES	± 0° 30'	XX ± .01
DIAMETERS	± .005	XXX ± .005

QTY REQ	ITEM	PART NO.
4	1	NT129-632-4

DATE	DATE	DATE
12/6/68	4-15-68	3-3-67

DESCRIPTION	SYMBOL
NUT, PLN, SPLINE	B

LIST OF MATERIAL SK 3253-002-3  
 THE TECHNICAL MATERIEL CORP.  
 MAMARONECK, NEW YORK  
 PLATE, REAR

SIZE (CODE IDENT NO.) DWG. NO.	SCALE	SHEET	OF
D 82679	1/1	1	1

ISSUE
4

NOTICE TO PERSONS RECEIVING THIS DRAWING: This drawing is issued in confidence for engineering information only and may not be reproduced or used for manufacturing purposes without permission from THE TECHNICAL MATERIEL CORPORATION. In the event this drawing is used for manufacturing purposes, the user is advised to check it against the original.

MS 5103