

APPLICATION

QTY 2
MODEL USED ON TRO-47A

ASS'Y NO.

LTR

X

DESCRIPTION

EXPERIMENTAL RELEASE
ORIGINAL RELEASE

DATE

2.21.67
7/15/69

E.M.N.NO

-H-

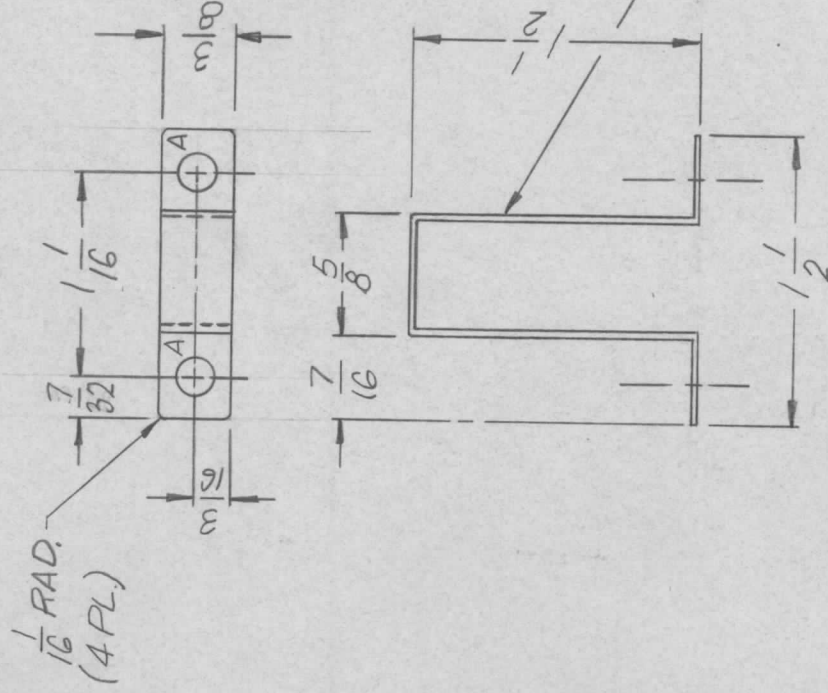
DRAFT

440
CU

CHKD

APPD

REVISIONS



UNLESS OTHERWISE SPECIFIED:

1. USE MATERIAL THICKNESS FOR MAXIMUM RADIUS ON ALL BENDS.
2. ALL ANGULAR BENDS 90 DEGREES.
3. REMOVE ALL BURRS AND SHARP EDGES.

UNLESS OTHERWISE SPECIFIED DIMENSIONS ARE IN INCHES AND INCLUDE CHEMICALLY APPLIED OR PLATED FINISHES

DECIMALS FRACTIONS
X ± .05 TOLS. 1/64
.XX ± .01 ANGLES
.XXX ± .005 0° .30'

MATERIAL - 020 ALUM.
5052-H32

FINISH S404
YELLOW IRIDITE
S401-451

REQ'D ITEM

L. BUTLER

PART NUMBER

DESCRIPTION

SYM.

LIST OF MATERIAL

THE TECHNICAL MATERIEL CORP.

MAMARONECK, NEW YORK

STRAP, XFMR, TIEDOWN

NOTICE TO PERSONS RECEIVING THIS DRAWING
THE TECHNICAL MATERIEL CORPORATION claims proprietary right in the material disclosed hereon. This drawing is issued in confidence for engineering information only and may not be reproduced or used to manufacture anything shown hereon without permission from THE TECHNICAL MATERIEL CORPORATION to the user. This drawing is loaned for mutual assistance and is subject to recall at any time.

SIZE A

CODE IDENT. NO. 82679

DWG NO.

MS5102

ISSUE

Ø

SCALE 1:1

SHEET

OF