

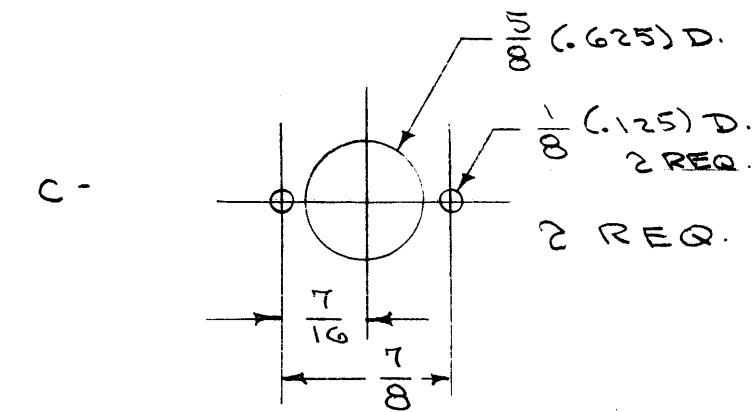
IF IT IS FOUND DESIRABLE TO CHANGE ANY TOLERANCE OR OTHER DETAIL SPECIFIED ON THIS DRAWING NOTIFY THE PURCHASER PROMPTLY.

MAXIMUM ALLOWABLE TOLERANCES HAVE BEEN DETERMINED AND DEVIATIONS WILL BE CAUSE FOR REJECTION. REMOVE ALL BURRS AND SHARP EDGES

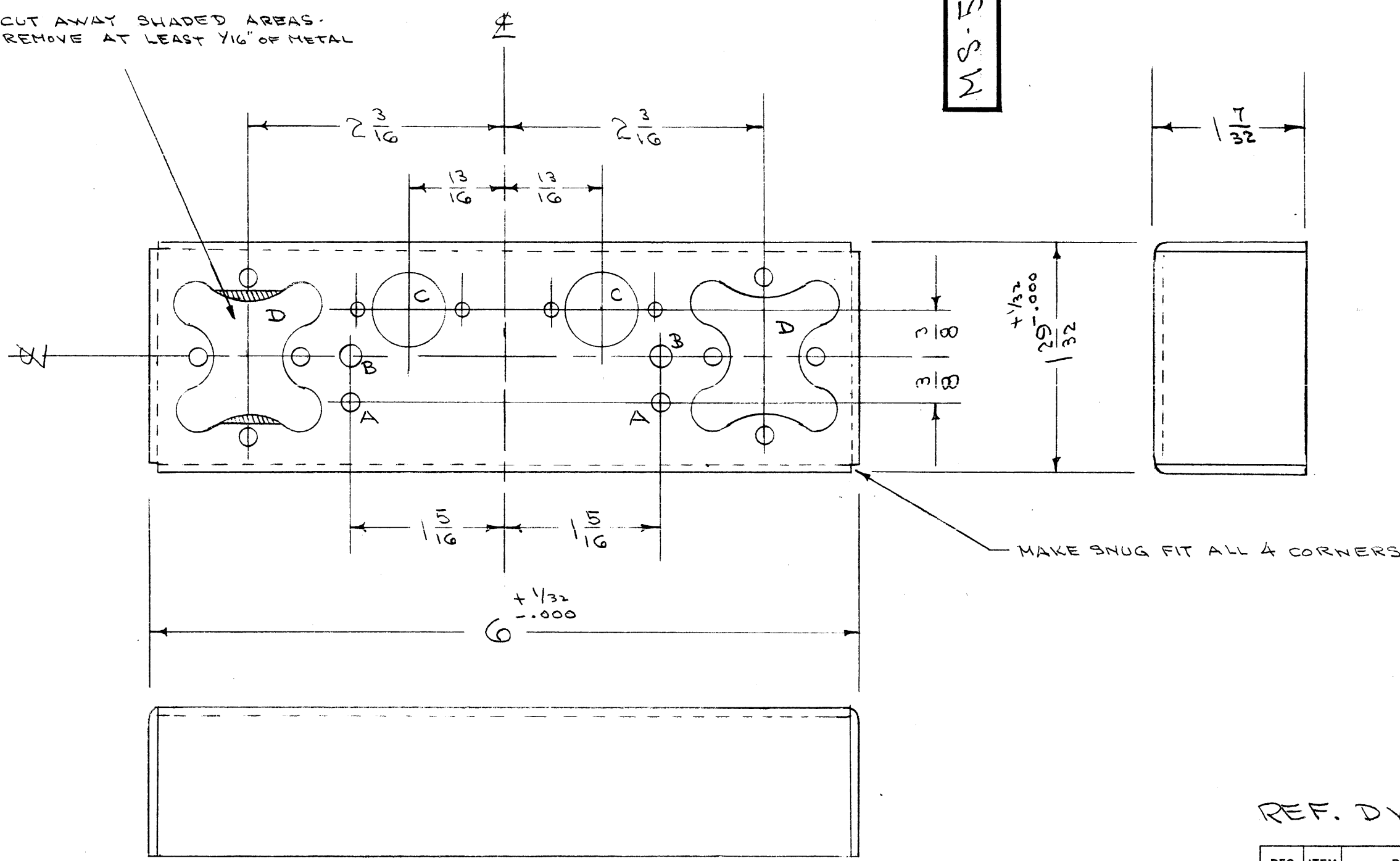
CUT AWAY SHADED AREAS - REMOVE AT LEAST 1/16" OF METAL

MS-593 C

A - 5/32 (.156) D. 2 HOLES
 B - 3/16 (.187) D. 2 "



C - 2 REQ.
 D - SEE DWG. MS-119 2 REQ.



NOTICE TO PERSONS RECEIVING THIS DRAWING

THE TECHNICAL MATERIEL CORPORATION claims proprietary right in the material disclosed hereon. This drawing is issued in confidence for engineering information only and may not be reproduced or used to manufacture anything shown hereon without permission from THE TECHNICAL MATERIEL CORPORATION to the user. This drawing is loaned for mutual assistance and is subject to recall at any time.

Property of:
THE TECHNICAL MATERIEL CORPORATION
 MAMARONECK, NEW YORK

REF. DWG. MS-624, LD-311

C	1	S-404 WAS S-101	12/11/53	1001	AB		EMN
B	1	TYPE OF CORNER CHANGED	7/18/55	1	WJC		WJC
A	1	"D" DETAIL ADDED	6/15/55	1	WJC	HH	WJC
ISSUE	ITEM	CHANGED FROM	DATE	CN. NO.	DRAFTS	CHECKER	ENG. APP.

TOLERANCES		SCALE:	
ALL OTHERS	DEC. DIM. ± FRAC. DIM. ± 1/64 ANGULAR DIM. ±	DRILL, PUNCH, COMMERCIAL STOCK SIZES AND MANUFACTURERS TOLERANCES ARE NOT INCLUDED.	

1	GPR	297		3-29-55
REQ. PER UNIT	MODEL	PROJECT NO.	ASSY. NO.	DATE

REQ.	ITEM	PART NO.	DESCRIPTION	SYMBOL
		.064	THE TECHNICAL MATERIEL CORP., MAMARONECK, NEW YORK	
		ALUMINUM	CHASSIS	
		52S H32	2nd CONVERTER	GPR
			COO. 3-29-55	WJC
			DRAWN	ELEC. DES. APP.
			HH	G.T.O
			CHECKED	FINAL APPROVAL
				MS-593 C