

IF IT IS FOUND DESIRABLE TO CHANGE ANY TOLERANCE OR OTHER DETAIL SPECIFIED ON THIS DRAWING NOTIFY THE PURCHASER PROMPTLY.

MS-591 J

MAXIMUM ALLOWABLE TOLERANCES HAVE BEEN DETERMINED AND DEVIATIONS WILL BE CAUSE FOR REJECTION. REMOVE ALL BURRS AND SHARP EDGES

REQ. PER UNIT

USED ON

MODEL

PROJECT NO.

ASS'Y. NO.

DATE

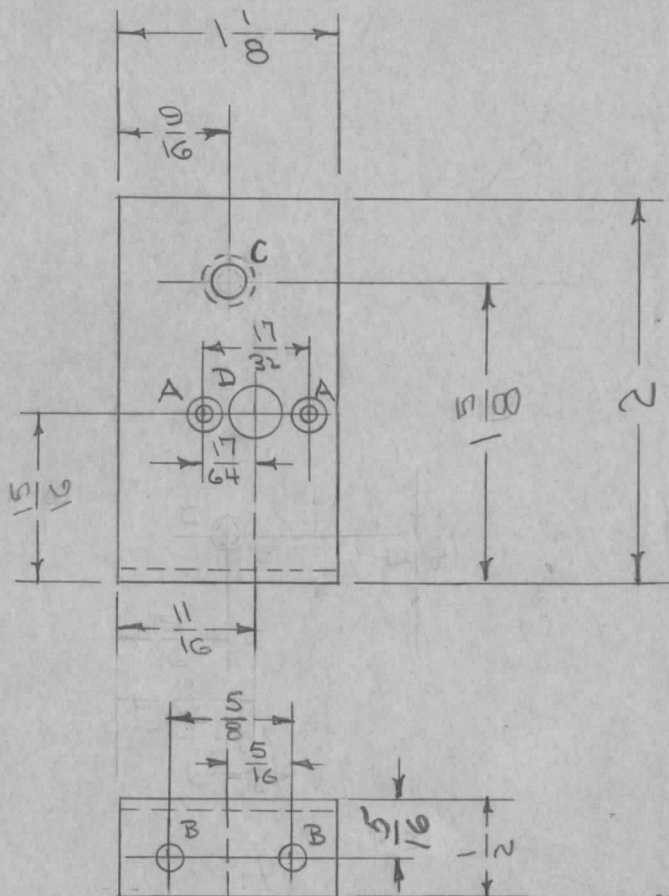
1

GPR(S)(R)

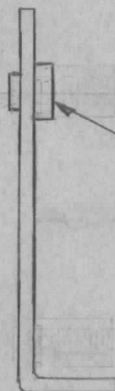
297

A-1043

4-22-55



- A - DRILL & C'SINK 4-40 FHS - 2 HOLES REQ
- B - 3/16 (.187) DIA. 2 " "
- C - .194-.191 DIA. 1 " "
- D - 9/32 (.281) " 1 " "



MOUNT IN "C" HOLE AS SHOWN, AFTER FINISH

J		5/16 DIM. WAS V4	7/5/65	14853	AVV	GCB
H	1	1/4 DIM. WAS 5/16	5-1-62	6662	EE	11/14
G	2	ITEM D ADDED				
	1	"C" HOLES WAS EXTRUDE + TAP 6-32	7-7-61	5188	G.D.L.	RL GCA

1	1	NT129-632-4	NUT, ROUND, SWAGE TYPE	
REQ.	ITEM	PART NO.	DESCRIPTION	
			SYMBOL	
		.081	THE TECHNICAL MATERIEL CORP.	
		ALUMINUM	MAMARONECK, NEW YORK	
		52S-H32	BFO BRACKET	
			GPR (S) (R)	
			CDD. 4-22-55	###
			PLK. 4-22-55	GT.O
			CHECKED	FINAL APPROVAL
		S404-IRIDITE	SUPERCEDES	MS-591 J
			A-906	

F	1	S404 IRIDITE WAS 3101 - CAUSTIC DIP	12-7-59	1001	P	EMN
E	1	ONE "C" HOLE DELETED	4-30-57	5	P3	###
D	1	"B" HOLE WAS 9/64 D.	4-20-55	4	P3	###
C	3	15/16 WAS 7/8	6/13/55	3	CDD	###
	2	15/16 " 1 9/16				
B	1	5/16 " 1/4	4/17/55	2	CDD	###
	2	"C" HOLES WERE 3/16				
A	1	9/16 WAS 11/16	4/1/55	1	CDD	P.L.K.

ISSUE	ITEM	CHANGED FROM	DATE	CN. NO.	DRAFTS	CHECKER	ENG. APP.
TOLERANCES		SCALE					
ALL OTHERS	DEC. DIM. ±	DRILL, PUNCH, COMMERCIAL STOCK SIZES AND MANUFACTURERS TOLERANCES ARE NOT INCLUDED.					
	FRAC. DIM. ± 1/64						
	ANGULAR DIM. ±						