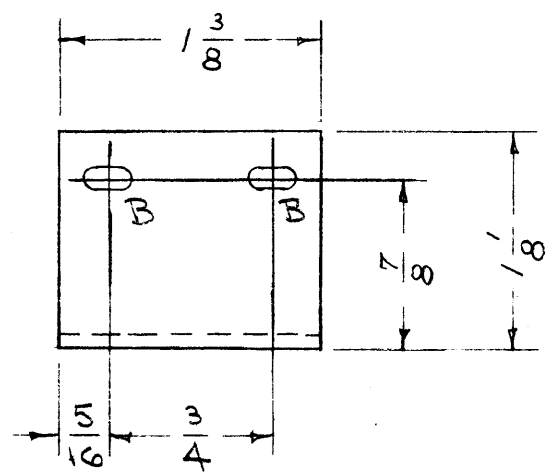
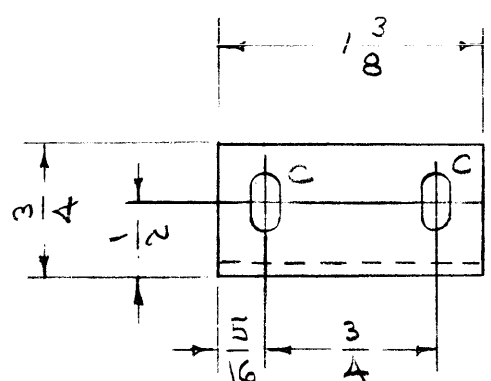
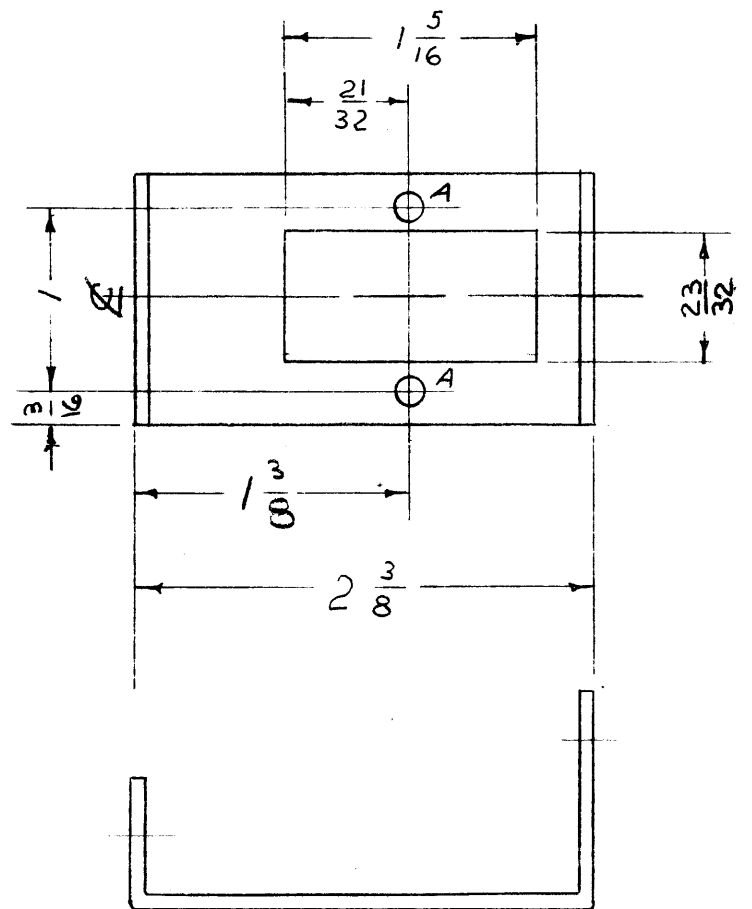


IF IT IS FOUND DESIRABLE TO CHANGE ANY TOLERANCE OR OTHER DETAIL SPECIFIED ON THIS DRAWING NOTIFY THE PURCHASER PROMPTLY.

MAXIMUM ALLOWABLE TOLERANCES HAVE BEEN DETERMINED AND DEVIATIONS WILL BE CAUSE FOR REJECTION. REMOVE ALL BURRS AND SHARP EDGES

MS-578 B



ALL BENDS 90°
 A = 9/64 (.140) D 2 HOLES REQ.
 B = 1/8 x 1/4 SLOT 2 SLOTS "
 C = 5/32 x 5/16 " 2 " "

NOTICE TO PERSONS RECEIVING THIS DRAWING

THE TECHNICAL MATERIEL CORPORATION claims proprietary right in the material disclosed hereon. This drawing is issued in confidence for engineering information only and may not be reproduced or used to manufacture anything shown hereon without permission from THE TECHNICAL MATERIEL CORPORATION to the user. This drawing is loaned for mutual assistance and is subject to recall at any time.

Property of:
 THE TECHNICAL MATERIEL CORPORATION
 MAMARONECK, NEW YORK

B	1	S-404 WAS S-101	12/11/54	1001	RS	EMN	
A	1	23/32 WAS 11/16	1-6-56	1	RS	WJC	
ISSUE	ITEM	CHANGED FROM	DATE	CN. NO.	DRAFTS	CHECKER	ENG. APP.

TOLERANCES		SCALE: 11
ALL OTHERS	DEC. DIM. ± FRAC. DIM. ± 1/64 ANGULAR DIM. ± 2°	DRILL, PUNCH, COMMERCIAL STOCK SIZES AND MANUFACTURERS TOLERANCES ARE NOT INCLUDED.

1	RSC-2(ABCDE)	170	11-5-54
QTY. PER UNIT	MODEL	PROJECT NO.	ASS'Y. NO.
			DATE

REQ. ITEM	PART NO.	DESCRIPTION	SYMBOL
	.064	THE TECHNICAL MATERIEL CORP.	
	STOCK SIZE	MAMARONECK, NEW YORK	
ALUMINUM	#	BRACKET - PLUG	
MATERIAL	WEIGHT PER PC.		
525-H32		RSC-2	
TYPE & TEMPER		P.B. 11-5-54	KZ
		EM - 11/15/54	
		DRAWN	ELEC. DES. APP.
		WJC	A.T.J.
HEAT TREAT. SPEC.		CHECKED	FINAL APPROVAL
S-404 YELLOW IRIDITE			
FINISH & SPEC. NO.			

MS-578 B