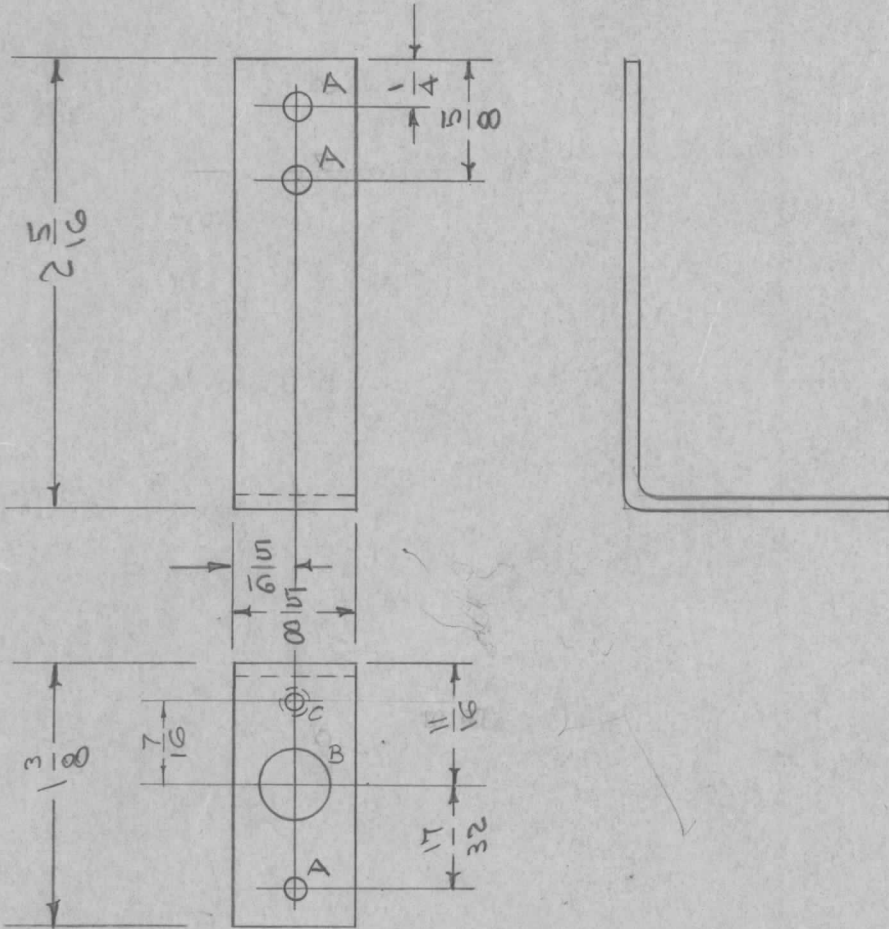


IF IT IS FOUND DESIRABLE TO CHANGE ANY TOLERANCE OR OTHER DETAIL SPECIFIED ON THIS DRAWING NOTIFY THE PURCHASER PROMPTLY.

MS-570 C

MAXIMUM ALLOWABLE TOLERANCES HAVE BEEN DETERMINED AND DEVIATIONS WILL BE CAUSE FOR REJECTION. REMOVE ALL BURRS AND SHARP EDGES

REQ. PER UNIT	USED ON			
	MODEL	PROJECT NO.	ASS'Y. NO.	DATE
1	NF-104	170	A-846	10-7-54



A - 9/64 (.140) D. 3 HOLES REQ.
 B - 13/32 (.406) D 1 " "
 C - DRILL & TAP 4-40 1 "

BLANK SIZE
 $3\frac{9}{16} \times \frac{5}{8}$

ISSUE	ITEM	CHANGED FROM	DATE	CN. NO.	DRAFTS	CHECKER	ENG. APP.
C	1	S404 - IRIDITE WAS 5101 - CAPSTIC DIP	12-7-59	1001	VP		EMN
B	1	'C' HOLE ADDED	3-7-54	2	B	jae	WJC
A	2	'B' HOLE WAS 3/8	11/1/55	1	B	jae	WJC
	1	11/16 WAS 5/8					

REQ.	ITEM	PART NO.	DESCRIPTION	SYMBOL
		.081	THE TECHNICAL MATERIEL CORP.	
		STOCK SIZE	MAMARONECK. NEW YORK	
	ALUMINUM	— # —	BRACKET, TERM. BD.	
	MATERIAL	WEIGHT PER PC.	NF-104	
	52S H 32		C.D.D. 10-7-54	KZ
	TYPE & TEMPER		DRAWN	ELEC. DES. APP.
	— # —		M.H.S.	A.J.J.
	HEAT TREAT. SPEC.		CHECKED	FINAL APPROVAL
	S404 IRIDITE			MS-570 C
	FINISH & SPEC. NO.			

TOLERANCES		SCALE
ALL OTHERS	DEC. DIM. ± FRAC. DIM. ± $\frac{1}{64}$ ANGULAR DIM. ±	DRILL, PUNCH, COMMERCIAL STOCK SIZES AND MANUFACTURERS TOLERANCES ARE NOT INCLUDED.