

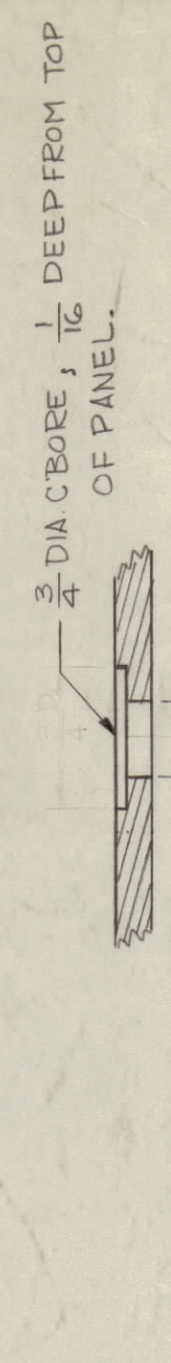
IF IT IS FOUND DESIRABLE TO CHANGE ANY TOLERANCE OR OTHER DETAIL SPECIFIED ON THIS DRAWING NOTIFY THE PURCHASER PROMPTLY. ANY CHANGES MADE MUST BE RECORDED AND DEVIATIONS WILL BE CAUSE FOR REJECTION. REMOVE ALL BURRS AND SHARP EDGES

NOTICE TO PERSONS RECEIVING THIS DRAWING

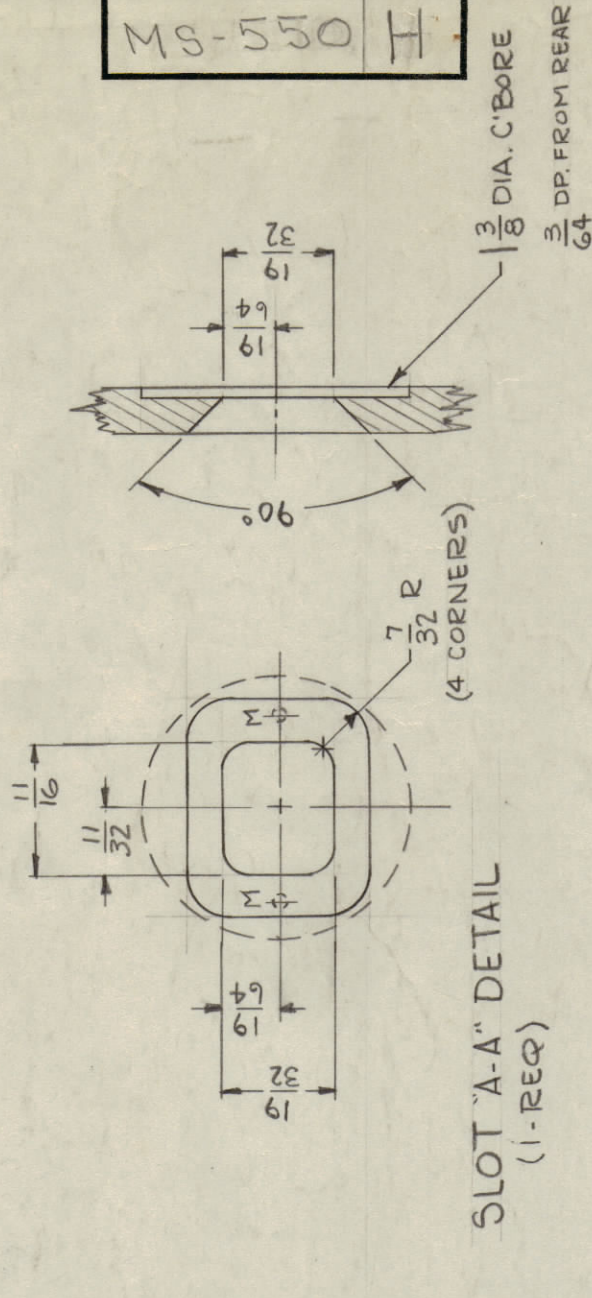
THE TECHNICAL MATERIEL CORPORATION claims proprietary right in the material disclosed herein. This drawing is issued in confidence for engineering information only and may not be reproduced or used to manufacture anything shown herein without permission from THE TECHNICAL MATERIEL CORPORATION to the user. This drawing is loaned for mutual assistance and is subject to recall at any time.

Property of:
THE TECHNICAL MATERIEL CORPORATION
MAMARONECK, NEW YORK

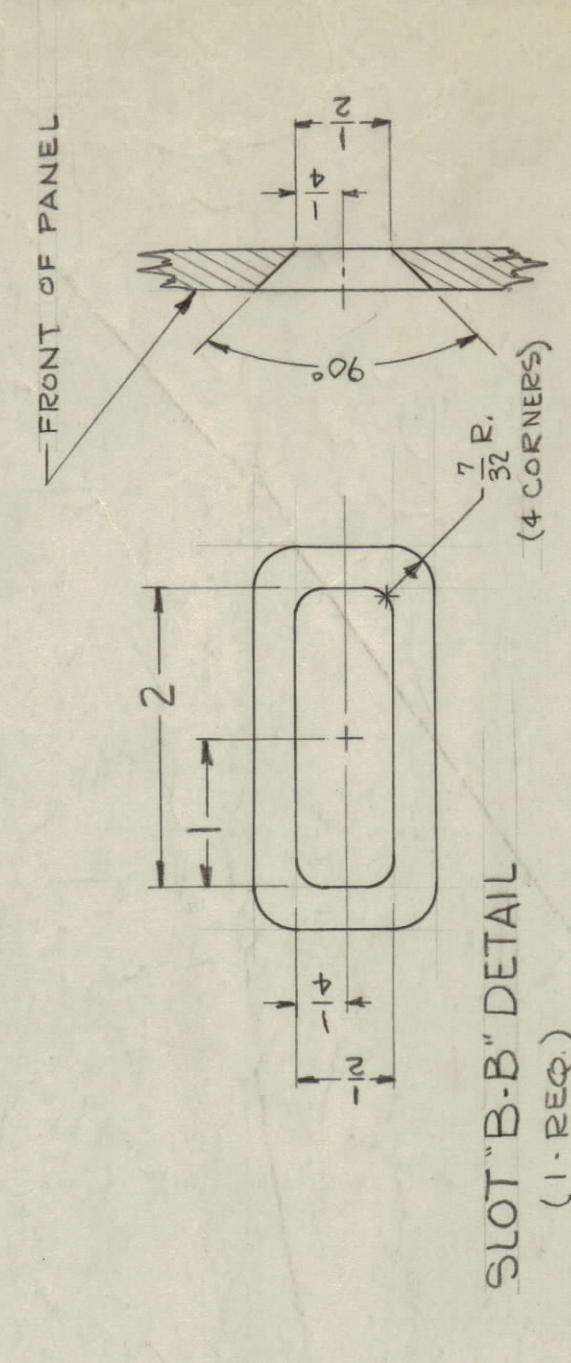
- A- NO. 41 (OTB) DRILL
- B- 1/32 (.218) DIA.
- C- 6.4 M.M. (.259) "
- D- 25/64 DIA.
- E- 3/64 (.484) "
- F- 1/64 (.156) "
- G- DRILL & CSINK FOR 10-32 FLAT HEAD SCREW (FRONT) (REAR)
- H- DRILL & TAP 4-40
- J- 9/16 (.562) X 1/8 DEEP FROM REAR
- K- DRILL & CSINK FOR 8-32 FLAT HEAD SCREW (FRONT) (REAR)
- L- DRILL & CSINK FOR 6-32 FLAT HEAD SCREW (FRONT) (REAR)
- M- NO. 55 (.052) DRILL X 1/64 (.0156) FROM REAR AFTER COUNTER BORE
- N- 1/4 X 1/32 SLOTS
- P- DRILL & CSINK FOR 6 F.A.S. 2 REQ. (FRONT)



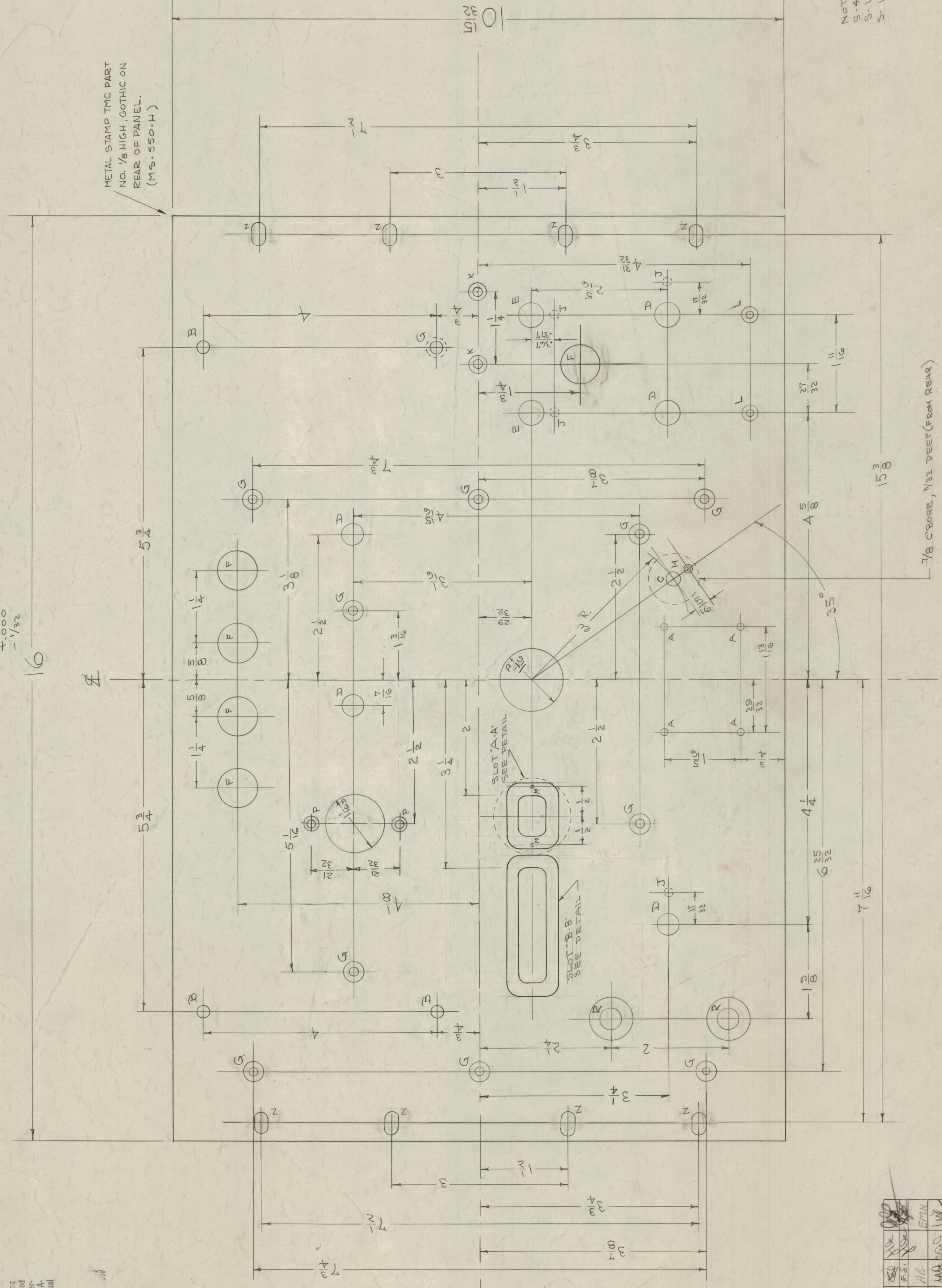
"R" DETAIL
(2-REQ)



SLOT "A-A" DETAIL
(1-REQ)



SLOT "B-B" DETAIL
(1-REQ)



FRONT

NOTE - FINISH
S-404 IRIDITE
S-114 ZINC CHROMATE PRIMER
S-115 SMOOTH GREY ENAMEL
(FRONT & SIDES ONLY)

REF: DWS. NO. LD-192 (2 SHEETS)

REQ. ITEM	PART NO.	DESCRIPTION	SYMBOL
1	316 TAP	THE TECHNICAL MATERIEL CORP. MAMARONECK, NEW YORK	
	STOCK SIZE	PANEL, FRONT	
	MATERIAL	ALUMINUM	
	WEIGHT PER FC	PMO CASE	
	TYPE & TEMPER	24 S-T3	
	HEAT TREAT SPEC.	8-A-5A	
	FINISH & SPEC. NO.	MS-550 H	

ISSUE	ITEM	CHANGED FROM	DATE	EN. NO.	DRAWN	CHECKER	ENG. APP.
1	H	SLOT "A-A" & "B-B" COMPLETELY CLARIFIED	2-21-52	172	WJL	WJL	
2	G	10 "K" HOLE ADDED	8-8-52	7052	F.S.	WJL	
3	F	5-404 TAP NOTE CHANGED	12/1/59	1001	AB	WJL	EMIL
4	E	2 1/16 HOLES WERE 1/8 DEEP	1/16	1001	WJL	WJL	
5	D	1 2-40 TAP HOLES ADDED	1/16	1001	WJL	WJL	
6	C	1 C-HOLE WAS F(257)D	3-22-57	4	WJL	WJL	
7	B	3 HOLES WERE 3/8	1/16	3	WJL	WJL	
8	A	1 H HOLE WAS NO. 31	1/16	2	WJL	WJL	
9		4 C HOLES WAS 1/4	1/16	1	WJL	WJL	
10		1 H HOLE WAS A 40	1/16	1	WJL	WJL	
11		2 5/16 DIA HOLES WERE 1/16	1/16	1	WJL	WJL	
12		1 N HOLES WERE C HOLES	1/16	1	WJL	WJL	

TOLERANCES
SEE DWG. 4-005
ALL DIMENSIONS ± .005
OTHER ANGULAR DIM ± .064
TOLERANCES ARE NOT INCLUDED.