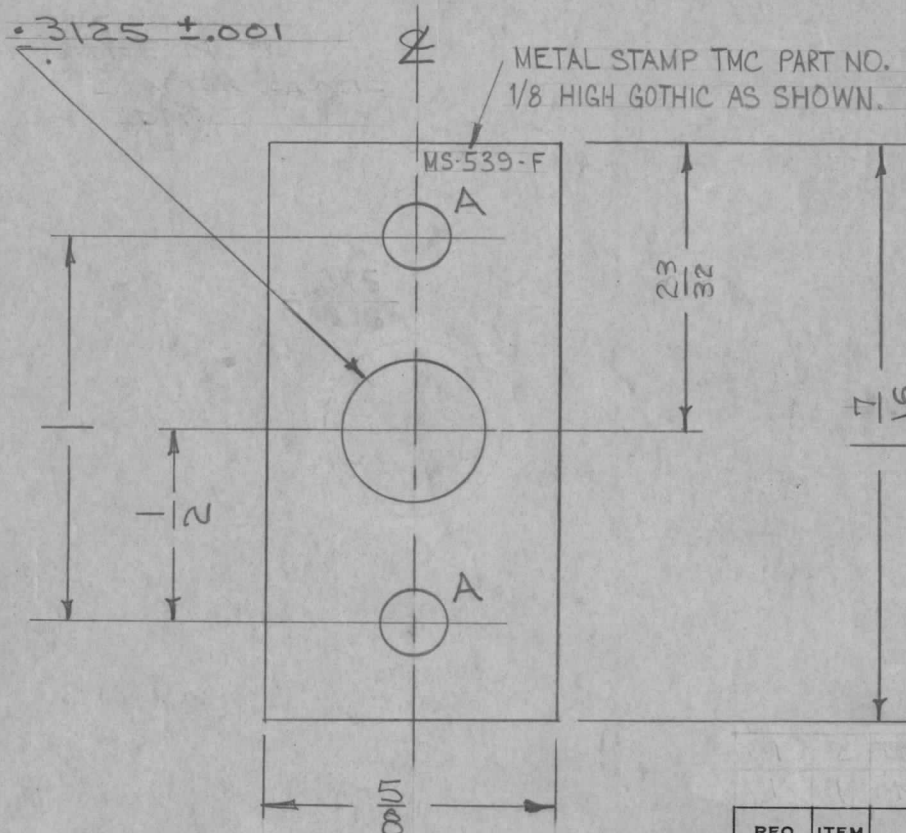


IF IT IS FOUND DESIRABLE TO CHANGE ANY TOLERANCE OR OTHER DETAIL SPECIFIED ON THIS DRAWING NOTIFY THE PURCHASER PROMPTLY.

MS-539 F

MAXIMUM ALLOWABLE TOLERANCES HAVE BEEN DETERMINED AND DEVIATIONS WILL BE CAUSE FOR REJECTION. REMOVE ALL BURRS AND SHARP EDGES

REQ. PER UNIT	USED ON			
	MODEL	PROJECT NO.	ASS'Y. NO.	DATE
2	PMO-1/2	285		7-23-54
2	VOX-1,2	291		1-12-55
2	GPR			8-16-55
2	RTF			6-8-56
1	GSB-1	A 79		9-21-56
2	RTF-2	F/P		11/19/57
2	VOX-3,4,5,6			6-27-62



A ~ 13/64 DIA. 2 REQ.

OBsolete
REPLACED BY MS-539

ISSUE	ITEM	CHANGED FROM	DATE	CN. NO.	DRAFTS	CHECKER	ENG. APP.
F	1	DWG. NO. WAS A-829	6-27-62	6470	W.A.F.	JAC	W.C.
E	1	FIN. S404 IRIDITE WAS 5101 CAUSTIC DIP	12-4-59	1001	P	EMN	
D	1	ITEM 2 WAS BB-108	5/8/58	2	JAC	JAC	W.C.
C	1	PMO, VOX, RTF WERE 1 REQ	6/11/56	3	JAC	JAC	W.C.
B	1	A HOLES WERE 1/64	10/16/55	2	JAC	JAC	W.C.
A	2	23/32 WAS 3/4	8/17/55	1	JAC	JAC	W.C.
A	1	17/16 WAS 1/2					

REQ.	ITEM	PART NO.	DESCRIPTION	SYMBOL
		1/8 THK.	THE TECHNICAL MATERIEL CORP. MAMARONECK, NEW YORK	
		ALUMINUM	FLOAT, FRONT	
		2024-T3	SUB ASSY. (PMO-1/2 VOX-1/2)	
			CDD. 7-23-54	W.C.
			DRAWN	ELEC. DES. APP.
			CHECKED	FINAL APPROVAL
		S404 IRIDITE		MS-539 F
		FINISH & SPEC. NO.		

TOLERANCES		SCALE
ALL OTHERS	DEC. DIM. ± FRAC. DIM. ± 1/64 ANGULAR DIM. ±	DRILL, PUNCH, COMMERCIAL STOCK SIZES AND MANUFACTURERS TOLERANCES ARE NOT INCLUDED.