

IF IT IS FOUND DESIRABLE TO CHANGE ANY TOLERANCE OR OTHER DETAIL SPECIFIED ON THIS DRAWING NOTIFY THE PURCHASER PROMPTLY.

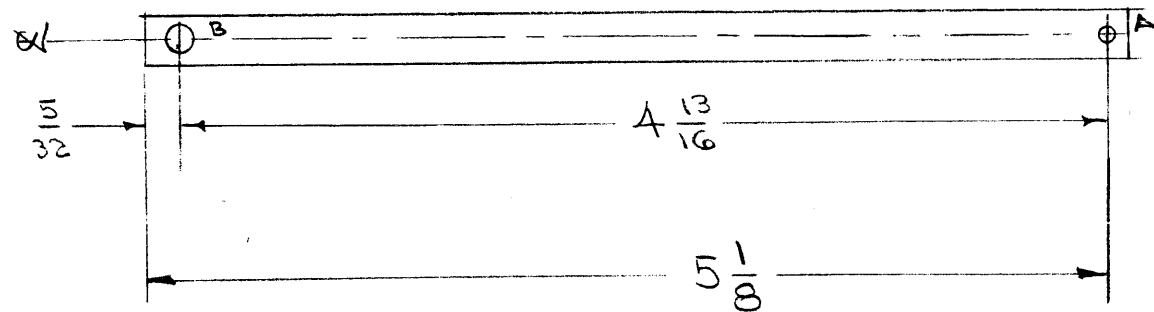
MAXIMUM ALLOWABLE TOLERANCES HAVE BEEN DETERMINED AND DEVIATIONS WILL BE CAUSE FOR REJECTION. REMOVE ALL BURRS AND SHARP EDGES

MS-514 C

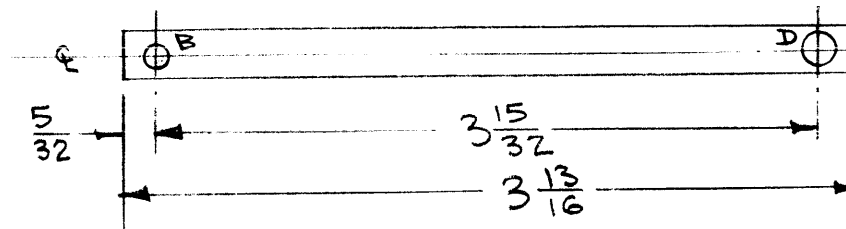
A-NO. 50(.070) D.
 B- 5/32(.156) D.
 C. NO. 36(.108) D.
 D. 13/64(.187) D.

3 HOLES REQ.
 2 " " "
 1 " " "
 2 " " "

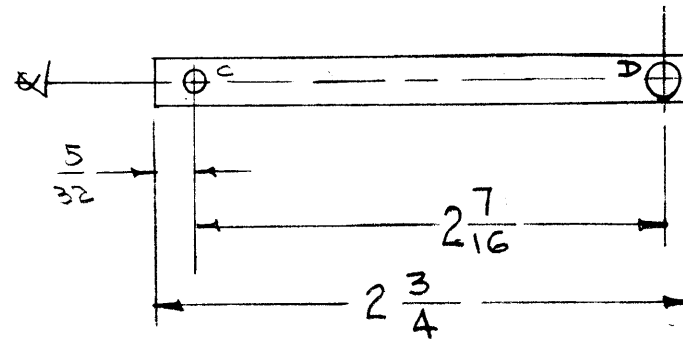
MS-514-1



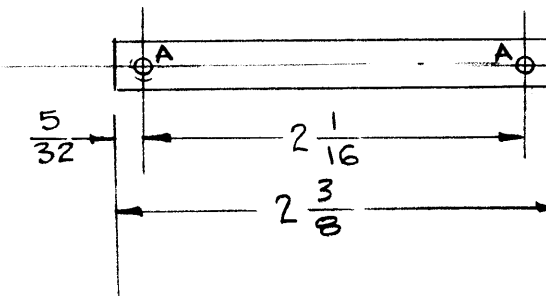
MS-514-3



MS-514-2



MS-514-4



NOTICE TO PERSONS RECEIVING THIS DRAWING

THE TECHNICAL MATERIEL CORPORATION claims proprietary right in the material disclosed hereon. This drawing is issued in confidence for engineering information only and may not be reproduced or used to manufacture anything shown hereon without permission from THE TECHNICAL MATERIEL CORPORATION to the user. This drawing is loaned for mutual assistance and is subject to recall at any time.

Property of:
 THE TECHNICAL MATERIEL CORPORATION
 MAMARONECK, NEW YORK

B	2	13/64" D" Holes Were 3/16	9/10/57	3	Sec.	Hand	Hand
	1	1" C" Hole Deleted					
	7	MS-514-1 WAS 5 7/8 LONG ONE A HOLE DELETED					
	6	FINISH ADDED					
	5	MATL. WAS NICKEL SILVER					
	4	"D" HOLE WAS 1 REQ.	4/9/57	2	KG	Hand	Hand
	3	MS-514-3 & A ADDED					
A	2	"A" HOLE QUAN. WAS 4					
	1	MS-514-2 WAS 6 7/8" LONG					
	2	"C" HOLES ADDED	8/6/54	1	C.D.S.	Hand	Hand
ISSUE	ITEM	CHANGED FROM	DATE	CN. NO.	DRAFTS	CHECKER	ENG. APP.

TOLERANCES		SCALE:
ALL OTHERS	DEC. DIM. ± FRAC. DIM. ± 1/4 ANGULAR DIM. ±	DRILL, PUNCH, COMMERCIAL STOCK SIZES AND MANUFACTURERS TOLERANCES ARE NOT INCLUDED.

LEACH	TAC-1	132	A-782	1-27-54
REQ. PER UNIT	MODEL	PROJECT NO.	ASS'Y. NO.	DATE
USED QN				

REQ. ITEM	PART NO.	DESCRIPTION	SYMBOL
.025 X 1/4		THE TECHNICAL MATERIEL CORP.	
STOCK SIZE		MAMARONECK, NEW YORK	
COPPER	#	CONNECTING STRAPS, SW-14A	
MATERIAL	WEIGHT PER PC.	TAC-1	
COMMERCIAL SOFT			
TYPE & TEMPER		C.D.D.	
HEAT TREAT. SPEC.		DRAWN	ELEC. DES. APP.
SILVER PLATE		CHECKED	MECH. DES. APP.
.0003		FINAL APPROVAL	
FINISH & SPEC. NO.		MS-514 E	