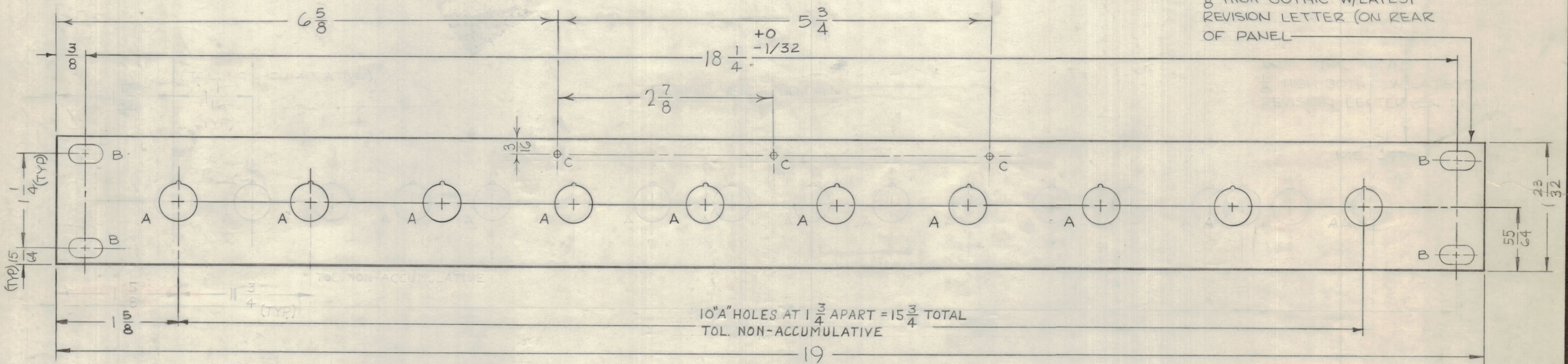


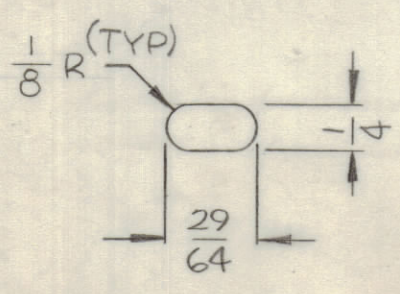
REVISIONS						
SYM	ZONE	DESCRIPTION	DATE	E.M.N.NO.	DRAFT	CHKD APPD
X1		"C" HOLES ADDED	12-26-66		Jc	
X2		MODEL WAS RSSA-16 "A" HOLES WERE 16	6-26-67		L.A.K.	
		ORIG RELEASE FOR PROD	1/9/68		HQ	

HOLE	DESCRIPTION	REQ
A	SEE DETAIL	10
B	SEE DETAIL	4
C	NO.48 DRILL(.0760)D	3

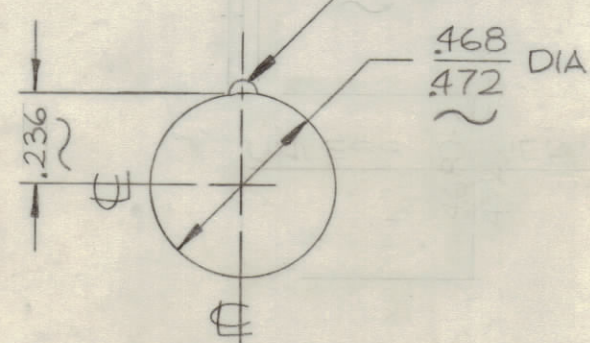
MARK TMC PART/NO.
 $\frac{1}{8}$ " HIGH GOTHIC W/LATEST
 REVISION LETTER (ON REAR
 OF PANEL)



FRONT VIEW SHOWN



DETAIL "B"
(4 REQ)



DETAIL "A"
(10 REQ)

DRILL .059 DIA X $\frac{1}{16}$ DP
 FROM FRONT OF PANEL

FINISH NOTES:

- S404 - IRIDITE 14-2 AL-COAT.
- S114 - ZINC CHROMATE PRIMER } FRONT AND
- S115 - SMOOTH GRAY ENAMEL } EDGES ONLY

OR
 PRIME AND PAINT PER CUSTOMER'S SPECIFICATIONS.

MACHINING:

- MILL ALL EDGES.
- HOLES MUST BE DRILLED, UNLESS OTHERWISE SPECIFIED.
- LATERAL BOW OF PANEL MUST BE KEPT TO .031 TOLERANCE.
- PANEL MUST BE FREE OF ALL MACHINING MARKS, GOUGES AND SCRATCHES. IF NECESSARY, SAND FRONT OF PANEL WITH NO. 120 GRIT SANDPAPER.

MAXIMUM
 ALLOWABLE TOLERANCES HAVE BEEN
 DETERMINED AND ANY DEVIATIONS
 WILL BE CAUSE FOR REJECTION.

QTY REQ	ITEM	PART NO.	DESCRIPTION	SYMBOL
EATON BILL OF MATERIAL				
UNLESS OTHERWISE SPECIFIED DIMENSIONS ARE IN INCHES TOLERANCES ON FRACTIONS DECIMALS ANGLES		FINAL APPROVAL	DATE	THE TECHNICAL MATERIEL CORP. MAMARONECK, NEW YORK
$\pm 1/64$	$\pm .005$	$\pm 1/2^\circ$	11/19/68	
MATERIAL		MECH. DES.	DATE	
3/16 ALUMINUM		ELECT. DES.	DATE	
2024-T3		CHECKED	DATE	PANEL, FRONT RSSA-10
FINISH		DRAWN	DATE	
SEE NOTES		APPROVED FOR BUSHIPS	DATE	CODE
		CONTRACT NO.		SIZE
				DWG. NO.
				ISSUE
				SCALE
				SHEET OF