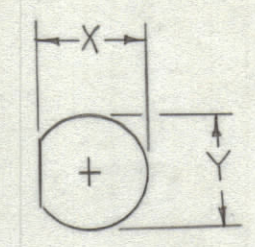


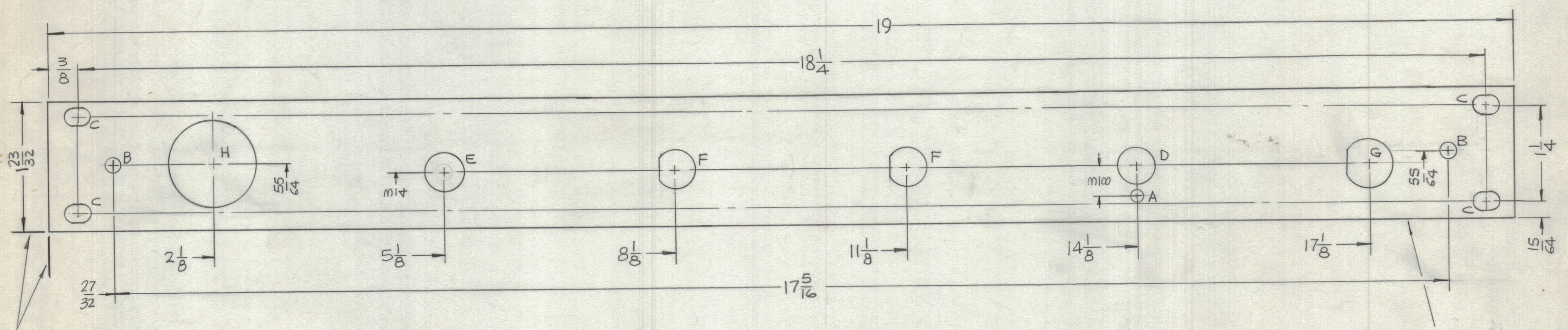
REVISIONS					
ZONE	SYM	DESCRIPTION	DATE	E.M.N. NO.	APPD
	X	EXP. RELEASE	9-9-66	X	
	Ø	ORIGINAL RELEASE FOR PRODUCTION	12/30/66	Ø	RME

HOLE	DESCRIPTION	REQ.
A	5/32 DIA.	1
B	13/64 DIA.	2
C	1/4 X 29/64 SLOT	4
D	15/32 DIA.	1
E	1/2 DIA.	1
F	SEE DETAIL	2
G	SEE DETAIL	1
H	1-5/32 DIA.	1

DETAIL	X	Y
F	468	1/2
G	.590-.595	5/8



DETAILS - F & G



LOCATING BASE LINES

MARK TMC P/N (MS 5085) HIGH GOTHIC W/LATEST REV. LETTER.

MACHINING:

- MILL ALL EDGES.
- HOLES MUST BE DRILLED, UNLESS OTHERWISE SPECIFIED.
- LATERAL BOW OF PANEL MUST BE KEPT TO .031 TOLERANCE.
- PANEL MUST BE FREE OF ALL MACHINING MARKS, GOUGES AND SCRATCHES. IF NECESSARY, SAND FRONT OF PANEL WITH NO. 120 GRIT SANDPAPER.

FINISH NOTES:

- S404 - IRIDITE 14-2 AL-COAT.
- S114 - ZINC CHROMATE PRIMER } FRONT AND
- S115 - SMOOTH GRAY ENAMEL } EDGES ONLY

OR PRIME AND PAINT PER CUSTOMER'S SPECIFICATIONS.

NOTES

1	AX-647	A5555
Q'TY./UNIT	MODEL USED ON	ASS'Y. NO.
SCALE 1:1	CODE A	
THE CONTENTS OF THIS DRAWING ARE THE EXCLUSIVE PROPERTY OF THE TECHNICAL MATERIEL CORP. ITS UNAUTHORIZED USE OR REPRODUCTION IN WHOLE OR IN PART IS STRICTLY FORBIDDEN.		

REQ'D.		ITEM	PART NUMBER	DESCRIPTION	SYMBOL
F. BUDETTI				LIST OF MATERIAL	
MATERIAL		3/16 THICK ALUMINUM 2024-T3			
FINISH		SEE NOTES			
UNLESS OTHERWISE SPECIFIED DIMENSIONS ARE IN INCHES AND INCLUDE CHEMICALLY APPLIED OR PLATED FINISHES		THE TECHNICAL MATERIEL CORP. MAMARONECK, NEW YORK			
TOLERANCES		PANEL, FRONT			
DECIMALS	FRACTIONS	DRAWN	DATE	FINAL APPROVAL	DATE
.X ± .05	± 1/64		9-9-66		12/30/66
.XX ± .01	ANGLES ± 0° 30'	CHECKED	DATE		
.XXX ± .005					
ELECT. DES.		MECH. DES.		DATE	REV. LTR.
				MS5085	Ø
				SHEET	

MS5085