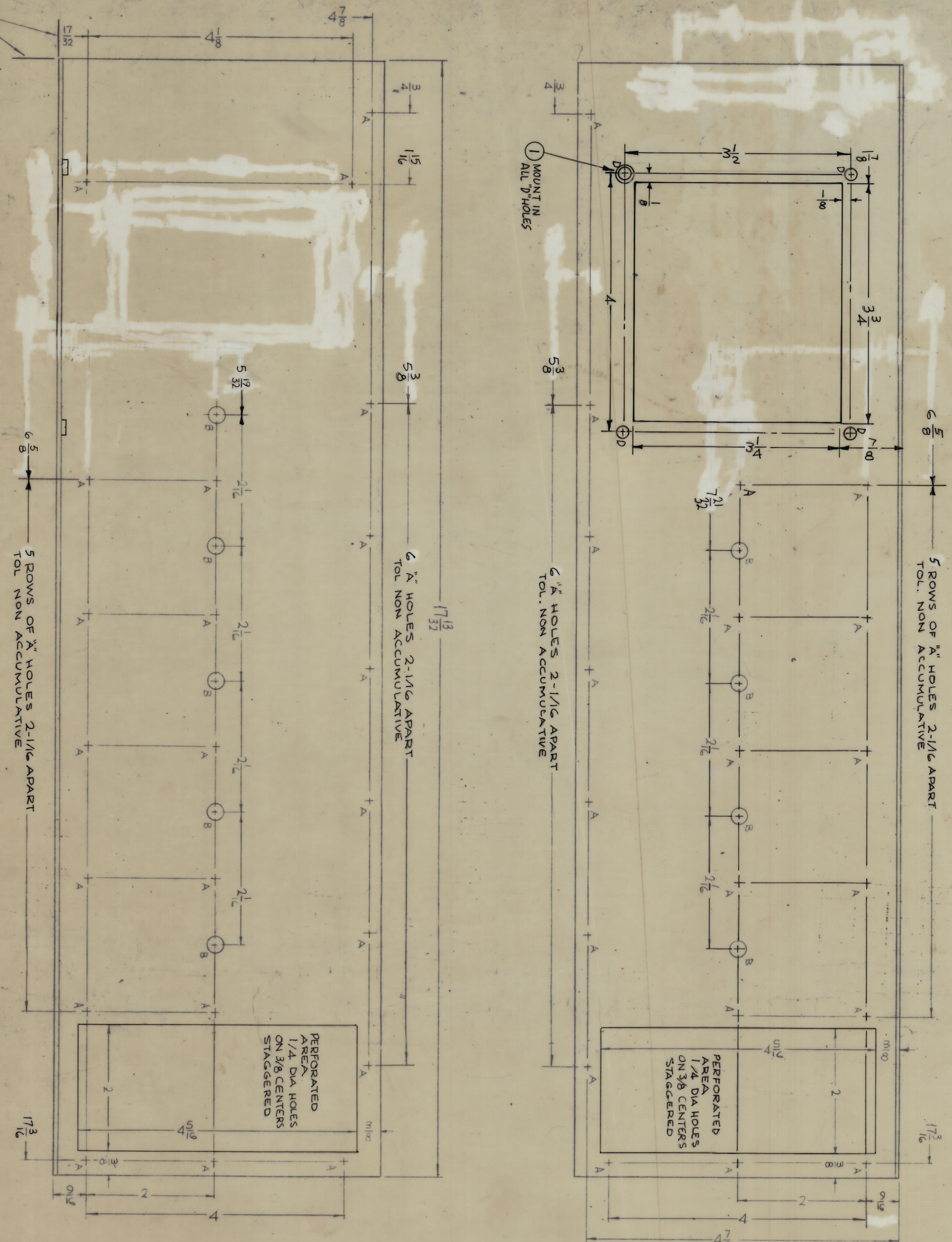


| REV. | DESCRIPTION   | DATE     | BY    | CHKD. | APPD. |
|------|---|----------|-------|-------|-------|
| X    | EXP. RELEASE  | 8/24/44  | X     |       |       |
| X1   | 4" DIA BELT HOLES WAS FROM TOP LINE                 | 10/25/44 | X1    |       |       |
| X2   | 5520 ADDED, 5423 DELETED                            | 1/24/44  | X2    |       |       |
| X3   | RELOC. ITEM 11 DELETED, RORDING MOUNT ON "D" DETAIL | 1/15/44  | X3    |       |       |
| 0    | ORIGINAL RELEASE FOR PRODUCTION                     | 1/31/46  |       |       |       |
| A    | DEL. C HOLES & SLOT NUMBER 11F                      | 6/27/42  | 20445 | 1.97  | 59    |

REVISIONS



NOTE:  
 1. USE MATERIAL THICKNESS FOR MAXIMUM RADIUS ON ALL BENDS  
 2. REMOVE ALL BURRS AND SHARP EDGES  
 3. REMOVE ALL BURNS AND SHARP EDGES  
 4. MOUNT INSERTS AFTER FINISHING

| HOLES | DESCRIPTION | REQ |
|-------|-------------|-----|
| A     | 11/64 DIA.  | 42  |
| B     | 1/4 DIA     | 9   |
| C     | 3/16 DIA    | 4   |
| D     | 1/8 DIA     | 4   |

NOTE:  
 1. USE MATERIAL THICKNESS FOR MAXIMUM RADIUS ON ALL BENDS  
 2. REMOVE ALL BURRS AND SHARP EDGES  
 3. REMOVE ALL BURNS AND SHARP EDGES  
 4. MOUNT INSERTS AFTER FINISHING

| REV. | ITEM | DESCRIPTION              | DATE    | BY | CHKD. | APPD. |
|------|------|--------------------------|---------|----|-------|-------|
| 4    | 1    | WRAPAROUND, FIXED FILTER | 1/10/47 |    |       |       |
| 3    | 1    | WRAPAROUND, FIXED FILTER | 1/10/47 |    |       |       |
| 2    | 1    | WRAPAROUND, FIXED FILTER | 1/10/47 |    |       |       |
| 1    | 1    | WRAPAROUND, FIXED FILTER | 1/10/47 |    |       |       |

MS5081

THE TECHNICAL MATERIAL CORP.  
 MANHATTAN, NEW YORK

MS5081