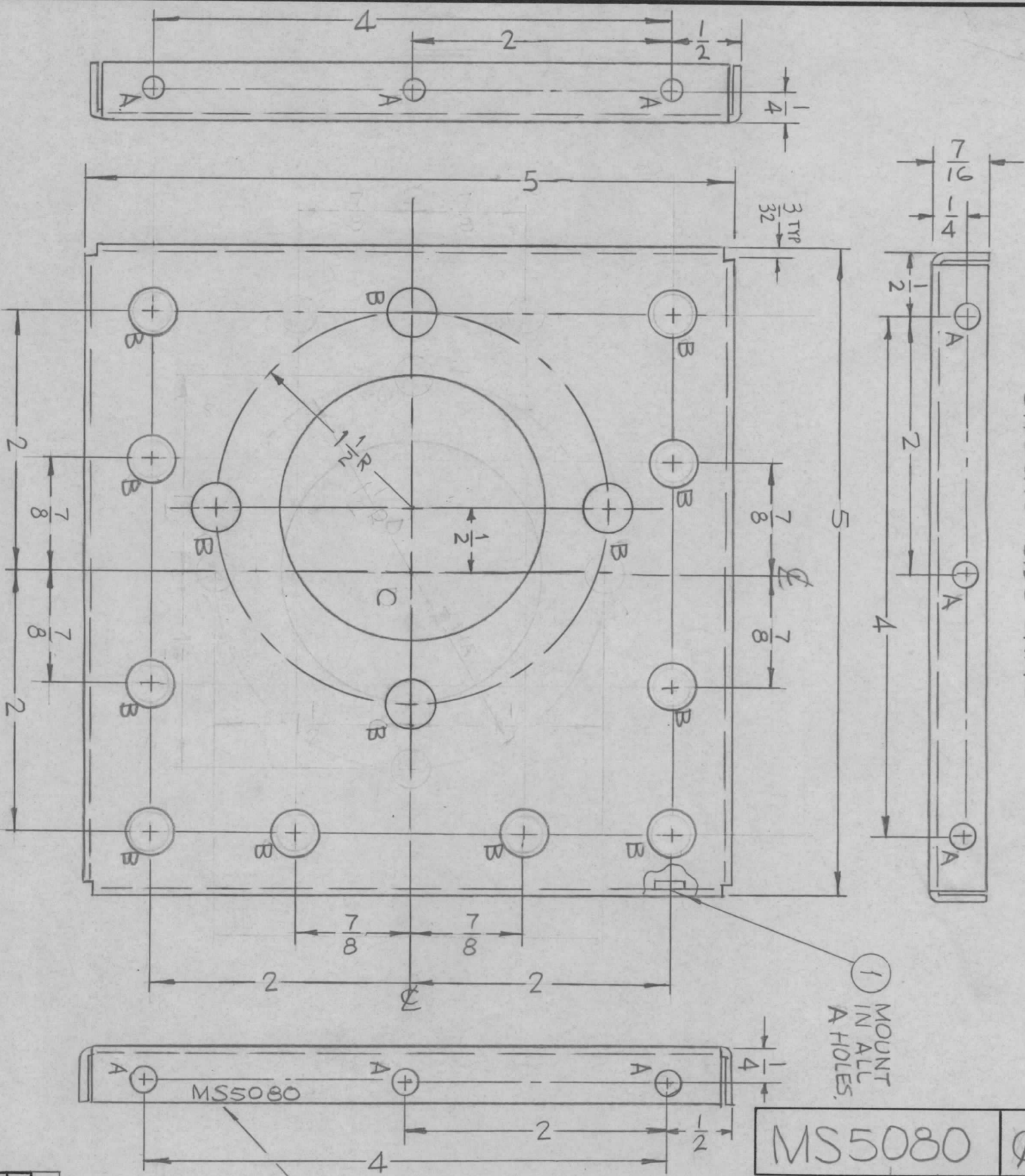


OPPOSITE SIDE SAME



SYM	DESCRIPTION	DATE	EM.N. NO.	DRAFT	CHKD	APPD
X	EXP. RELEASE	8-25-66	X	MS		RC
X1	RELOC. "D" HOLE & 4 RELATED "C" HOLES. DELETED 2 "C" HOLES.	12-8-66	X1	RME		RC
X2	(3) 11/64 HOLES CHANGED TO .191-.194 ORIGINAL RELEASE FOR PRODUCTION	12-19-66	X2	MS		RC
Ø		1/11/67	Ø	CV		RC

HOLES	DESCRIPTION	REQD
A	.191-.194 DIA.	12
B	3/8 DIA.	14
C	2" DIA.	1

MARK TMC P/N HIGH GOTHIC 8/LATEST REV. W/LATEST REV. LETTER.

REQ'D.	ITEM	PART NUMBER	DESCRIPTION	SYMBOL
12	1	NT129-632-4	NUT, PLAIN, SPLINE	A

F. BUDETTI
 MATERIAL: .064 THICK ALUMINUM 5052-H32
 FINISH: COPPER FLASH, S245 SILVER PLATE, S423 SILVER KOTE

TITLE: THE TECHNICAL MATERIEL CORP. MAMARONECK, NEW YORK
 PLATE, END, FIXED FILTER

UNLESS OTHERWISE SPECIFIED	DRAWN	CHECKED	ELECT. DES.	MECH. DES.	DATE	DATE	DATE	DATE
DIMENSIONS ARE IN INCHES AND INCLUDE CHEMICALLY APPLIED OR PLATED FINISHES	MS	MS	MS	MS	8-25-66			
UNLESS OTHERWISE SPECIFIED								
DIMENSIONS ARE IN INCHES AND INCLUDE CHEMICALLY APPLIED OR PLATED FINISHES								
DECIMALS								
.X ± .05								
.XX ± .01								
.XXX ± .005								
FRACTIONS								
± 1/64								
ANGLES								
± 0° 30'								

- UNLESS OTHERWISE SPECIFIED:
1. USE MATERIAL THICKNESS FOR MAXIMUM RADIUS ON ALL BENDS
 2. ALL ANGULAR BENDS 90 DEGREES
 3. REMOVE ALL BURRS AND SHARP EDGES
 4. MOUNT INSERTS AFTER FINISHING

NOTES

Q'TY./UNIT	1	MODEL USED ON	LPFA-10K	ASS'Y. NO.	
SCALE	1:1	CODE	A		

THE CONTENTS OF THIS DRAWING ARE THE EXCLUSIVE PROPERTY OF THE TECHNICAL MATERIEL CORP. ITS UNAUTHORIZED USE OR REPRODUCTION IN WHOLE OR IN PART IS STRICTLY FORBIDDEN.