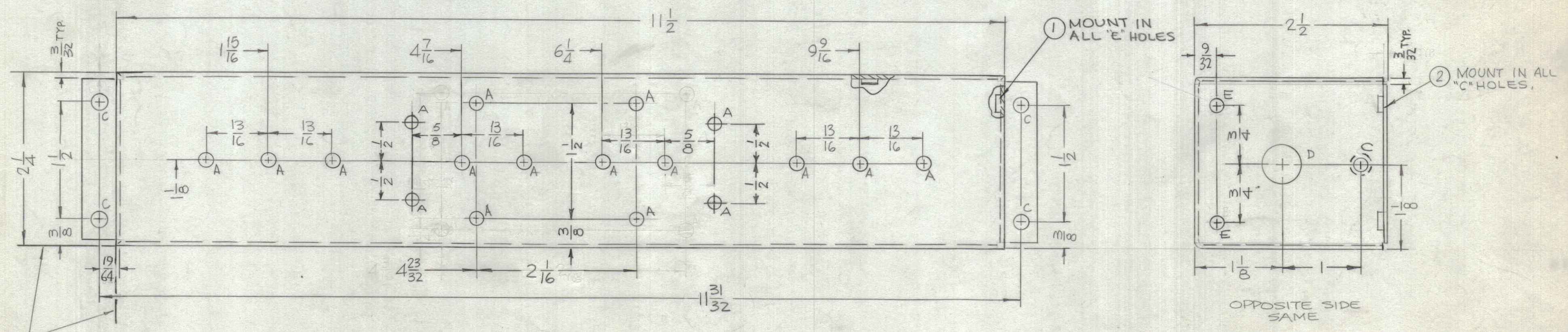


REVISIONS						
ZONE	SYM	DESCRIPTION	DATE	E.M.N. NO.	DRAFT	CHKD
	X	EXP RELEASE	8-31-66	X		
	X1	2 B HOLES ADDED	9-26-66	X1		
	X2	4 A HOLES RELOCATED	10-6-66	X2		
	X3	COMPLETELY REVISED	9-12-67	X3		
	X4	19/64 WAS 9/32	9-13-67	X4		
	X5	4 "A" HOLES ADDED	3/22/68	X5		
	Ø	ORIGINAL RELEASE FOR PRODUCTION	9/22/69	Ø		



- HOLES
- A- 11/64 DIA. (18 REQ.)
 - B- .161-.164 DIA. (10 REQ.)
 - C- .221-.224 DIA. (6 REQ.)
 - D- 1/2 DIA. (2 REQ.)
 - E- .191-.194 DIA. (4 REQ.)



LOCATING BASE LINES

- UNLESS OTHERWISE SPECIFIED:
1. USE MATERIAL THICKNESS FOR MAXIMUM RADIUS ON ALL BENDS
 2. ALL ANGULAR BENDS 90 DEGREES
 3. REMOVE ALL BURRS AND SHARP EDGES
 4. MOUNT INSERTS AFTER FINISHING

NOTES

TFP-2.5K		ASS'Y. NO.
Q'TY./UNIT	MODEL USED ON	
SCALE 1:1	CODE A	5401-451 5401- 5401-

THE CONTENTS OF THIS DRAWING ARE THE EXCLUSIVE PROPERTY OF THE TECHNICAL MATERIEL CORP. ITS UNAUTHORIZED USE OR REPRODUCTION IN WHOLE OR IN PART IS STRICTLY FORBIDDEN.

REF: LD1501

REQ'D.	ITEM	PART NUMBER	DESCRIPTION	SYMBOL
10	3	NT129-440-4	NUT, PLAIN SPLINE	B
6	2	NT129-832-4	NUT, PLAIN SPLINE	C
4	1	NT129-632-4	NUT, PLAIN SPLINE	E

F. BUDETTI		LIST OF MATERIAL	
MATERIAL .064 THICK ALUMINUM 5052-H32		THE TECHNICAL MATERIEL CORP. MAMARONECK, NEW YORK	
FINISH S404 YEL. IRIDITE		TITLE BOX, FILTER	
UNLESS OTHERWISE SPECIFIED DIMENSIONS ARE IN INCHES AND INCLUDE CHEMICALLY APPLIED OR PLATED FINISHES	DRAWN	DATE	FINAL APPROVAL
DECIMALS .X ± .05 .XX ± .01 .XXX ± .005	CHECKED	DATE	DATE
FRACTIONS ± 1/64 ANGLES ± 0° 30'	ELECT. DES.	DATE	DATE
TOLERANCES	MECH. DES.	DATE	DATE
		SHEET	REV. LTR.

MS5065