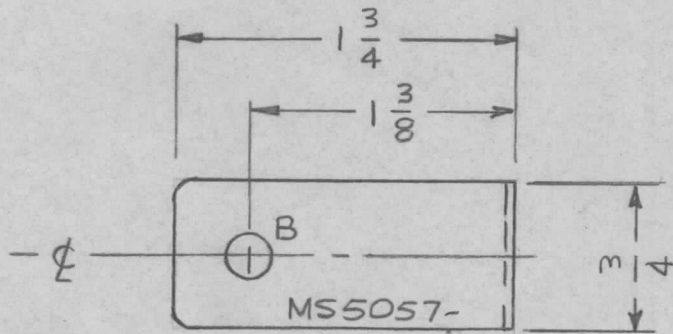
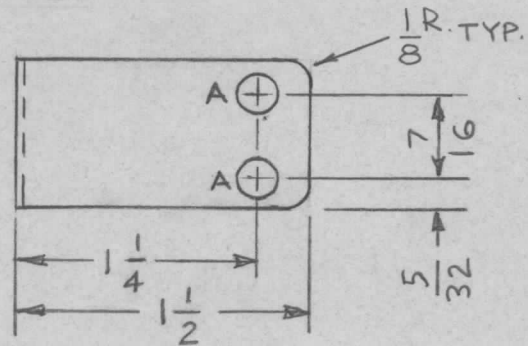


REQ. PER UNIT	USED ON			MS5057	Ø
	MODEL	ASS'Y. NO.	DATE		
2	GPT 40K	AT106	8-31-66		



MARK TMC P/N  
1/8 HIGH GOTHIC W/LATEST REV. LETTER

HOLE	DESCRIPTION	REQ
A	13/64 DIA.	2
B	15/64 DIA.	1



UNLESS OTHERWISE SPECIFIED:

1. USE MATERIAL THICKNESS FOR MAXIMUM RADIUS ON ALL BENDS
2. ALL ANGULAR BENDS 90 DEGREES
3. REMOVE ALL BURRS AND SHARP EDGES

REQ.	ITEM	PART NO.				DESCRIPTION				SYMBOL																
Ø		ORIGINAL RELEASE FOR PRODUCTION				9.12.66																				
X <sub>1</sub>		QTY WAS 1				9/1/66	X <sub>1</sub>	C.V																		
X		EXP. RELEASE				8-31-66	X	JBC																		
SYM		DESCRIPTION				DATE	CH. NO.	DRAFTS	CHECKER	ENG. APP.	MATERIAL															
UNLESS OTHERWISE SPECIFIED DIMENSIONS ARE IN INCHES AND INCLUDE CHEMICALLY APPLIED OR PLATED FINISHES						SCALE 1:1						HOT ROLLED				J.B.C.										
DECIMALS .X ± .05 .XX ± .01 .XXX ± .005						TOLERANCES						FRACTIONS ± 1/64 ANGLES ± 0° 30'				CODE	TYPE & TEMPER				HEAT TREAT. SPEC.	DRAWN	CHECKED	FINAL APPROVAL		
												S245 SILVER PLATE														
												S423 SILVER KOTE														
												FINISH & SPEC. NO.				ELEC. DES. APP.		MECH. DES. APP.		MS5057		Ø				