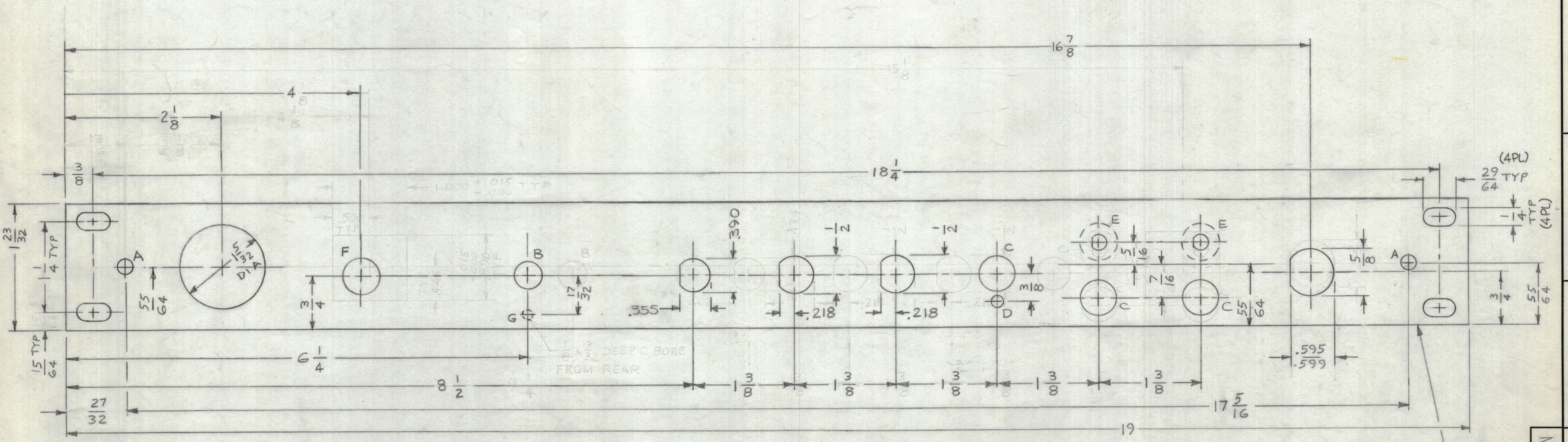


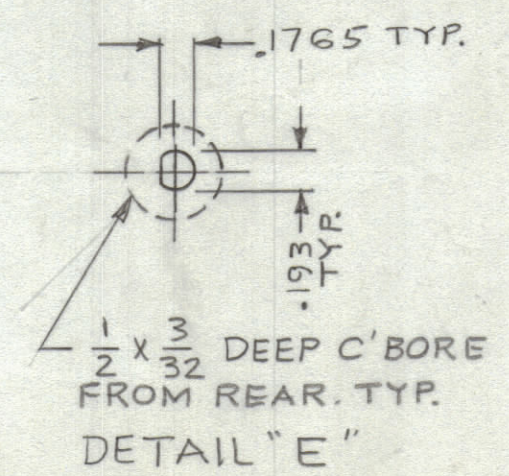
REVISIONS							
ZONE	SYM	DESCRIPTION	DATE	E.M.N. NO.	DRAFT	CHKD	APPD
	X	EXP. RELEASE	8-29-66	X	JBC		
	X1	COMPLETELY REVISED	9-9-66	X1	JBC		
	X2	HOLE DIM .355 WAS 402, 390 WAS 434	9-28-66	X2			
	Ø	ORIGINAL RELEASE FOR PRODUCTION	12/30/66	Ø	RME		



FRONT VIEW

MARK TMC P/N (MS5055-)
1/8 HIGH GOTHIC W/LATEST
REV LETTER (ON REAR)

HOLE	DESCRIPTION	REQ.
A	13/64 DIA.	2
B	3/8 DIA.	1
C	15/32 DIA	3
D	5/32 DIA	1
E	SEE DETAIL	2
F	1/2 DIA	1
G	1/8 DIA X 3/32 DEEP C'BORE FROM REAR	1



MACHINING:

- MILL ALL EDGES.
- HOLES MUST BE DRILLED, UNLESS OTHERWISE SPECIFIED.
- LATERAL BOW OF PANEL MUST BE KEPT TO .031 TOLERANCE.
- PANEL MUST BE FREE OF ALL MACHINING MARKS, GOUGES AND SCRATCHES. IF NECESSARY, SAND FRONT OF PANEL WITH NO. 120 GRIT SANDPAPER.

FINISH NOTES:

- S404 - IRIDITE 14-2 AL-COAT.
- S114 - ZINC CHROMATE PRIMER } FRONT AND
- S115 - SMOOTH GRAY ENAMEL } EDGES ONLY

OR
PRIME AND PAINT PER CUSTOMER'S SPECIFICATIONS.

REF: LD2155-

REQ'D.	ITEM	PART NUMBER	DESCRIPTION	SYMBOL
F. BUDETTI LIST OF MATERIAL				
MATERIAL 3/16 THK. ALUMINUM 2024-T3			THE TECHNICAL MATERIEL CORP. MAMARONECK, NEW YORK	
FINISH TMC GREY S115			TITLE PANEL, FRONT, MONITOR	
UNLESS OTHERWISE SPECIFIED DIMENSIONS ARE IN INCHES AND INCLUDE CHEMICALLY APPLIED OR PLATED FINISHES				
DRAWN JBC		DATE 8-29-66	FINAL APPROVAL	
CHECKED		DATE	DATE 12/30/66	
ELECT. DES.		DATE	MS5055	
MECH. DES.		DATE	REV. LTR.	
SHEET		REV. LTR.		

Q'TY./UNIT	MODEL USED ON	ASS'Y. NO.
1	AX-646	A5552
SCALE 1:1	CODE A	

NOTES

THE CONTENTS OF THIS DRAWING ARE THE EXCLUSIVE PROPERTY OF THE TECHNICAL MATERIEL CORP. ITS UNAUTHORIZED USE OR REPRODUCTION IN WHOLE OR IN PART IS STRICTLY FORBIDDEN.