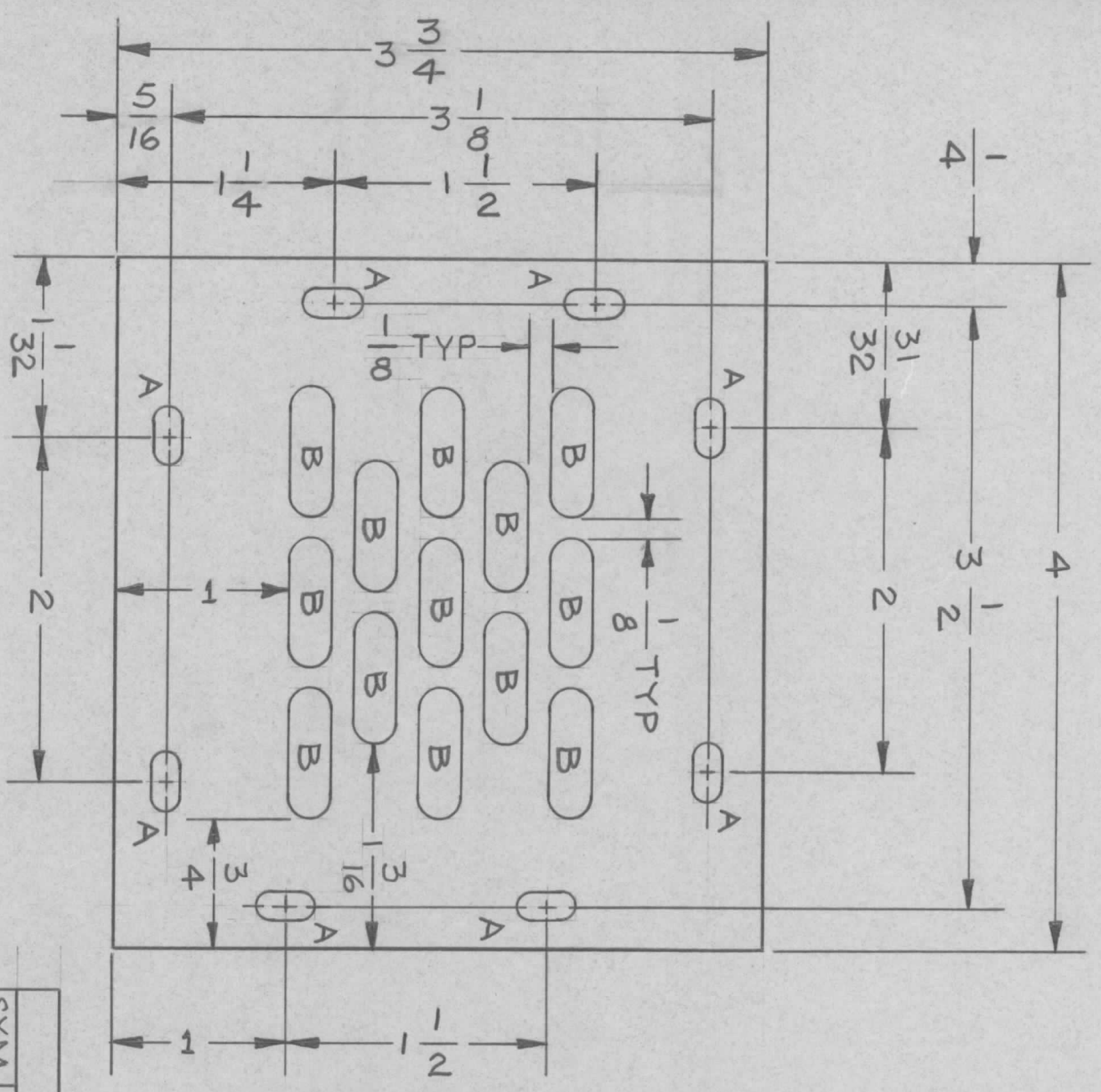


MS5050

REVISIONS

SYM	DESCRIPTION	DATE	E.M.N. NO.	DRAFT	CHKD	APPD
X1	MODEL WAS "DDR-7M"	11/10/66	-	#1A		
Ø	ORIGINAL RELEASE FOR PRODUCTION	12/21/66	Ø	CV		



HOLE CHART

SYM	DESCRIPTION	REQ'D
A	11/64 x 1/32	8
B	1/4 x 3/4	13

LIST OF MATERIAL

REQ'D.	ITEM	PART NUMBER	DESCRIPTION	SYMBOL
--------	------	-------------	-------------	--------

MATERIAL

.051 ALUMINUM 5052-H32

FINISH S404 YELLOW IRIDITE

TITLE COVER, RELAY CHASSIS

THE TECHNICAL MATERIEL CORP.
MAMARONECK, NEW YORK

UNLESS OTHERWISE SPECIFIED DIMENSIONS ARE IN INCHES AND INCLUDE CHEMICALLY APPLIED OR PLATED FINISHES

DECIMALS TOLERANCES FRACTIONS ANGLES

X ± .05 ± 1/64
.XX ± .01 ± 1/64
.XXX ± .005 ± 0° 30'

QTY./UNIT	1	MODEL USED ON	DAR181M	ASS'Y. NO.	AR181
SCALE	1:1	CODE	DDRTM		

NOTES

THE CONTENTS OF THIS DRAWING ARE THE EXCLUSIVE PROPERTY OF THE TECHNICAL MATERIEL CORP. ITS UNAUTHORIZED USE OR REPRODUCTION IN WHOLE OR IN PART IS STRICTLY FORBIDDEN.

DRAWN	C.E.D.	DATE	8/26/66	FINAL APPROVAL	DATE	12/1/66
CHECKED	<i>[Signature]</i>	DATE	8/29/66			
ELECT. DES.	<i>[Signature]</i>	DATE	12-1-66			
MECH. DES.		DATE				
				SHEET		MS 5050
				REV. LTR.		Ø